



# INSTALL INSTRUCTIONS

## Rear Stealth Bumper

Product : 616R0B

Application : 2015+ Ford F-150

**⚠ WARNING**

Read the instructions completely before beginning installation. Before tightening bolts, drilling or cutting where required, check to make sure there are no obstructions such as brake, fuel or electrical lines which may be damaged. Also keep in mind this is an after-market product and MAY require minor shimming and/or trimming, reaming, etc. for proper fit. Road Armor is not responsible for any damages to vehicle.

**ⓘ IMPORTANT NOTICE**

- Be sure to inspect and test fit your product to ensure proper fitment before having it coated, painted, bed lined, etc.
- Road Armor will not be responsible for the cost of coating your unit if any problems with fit or finish are not noted and addressed beforehand.

**SAFETY FIRST!**

- FOLLOW ALL INSTRUCTIONS, YOUR SAFETY AND THE SAFETY OF OTHERS IS MOST IMPORTANT.
- WEAR APPROPRIATE EYE PROTECTION AND EXERCISE CAUTION WHEN DRILLING / CUTTING

**REQUIRED TOOLS**

Metric and SAE Socket Sets and Wrenches

Cut off wheel

Tape Measure

**INCLUDED HARDWARE**

(12) 1/2" x 1.5" Grade 8 Bolts

(16) 1/2" Washers

(12) 1/2" Lock Washers

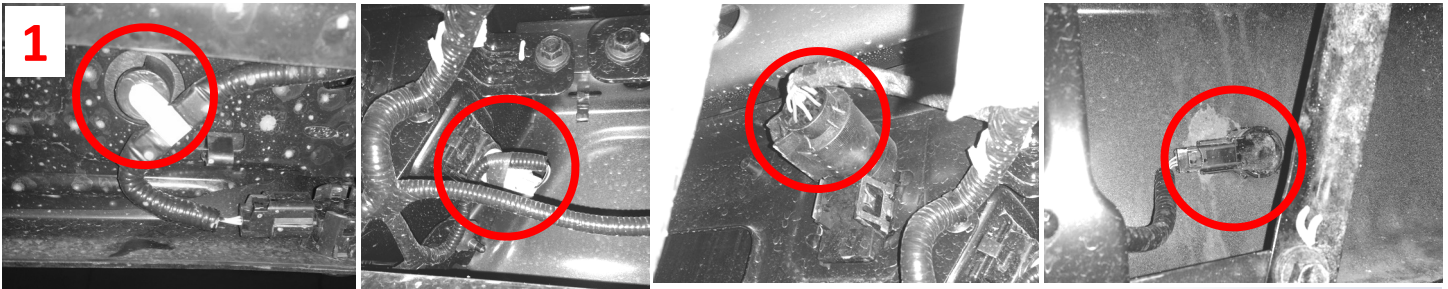
(4) Double Nut Plates

(1) Stainless Steel Road Armor Logo Letters and Bolt Kit

(3) Extra Stainless Logo Bolt Kit for Nut Plates

(1) Winch kit

(1) Trailer Plug Adapter Plate



**1** Remove wiring and sensors from factory bumper

**2** Remove 5 bolts per side as shown

**3** Using a ratcheting wrench ideally, remove bolts next to license plate lights

**4** There are 4 tabs that need to be pushed through bracket to remove the bumper

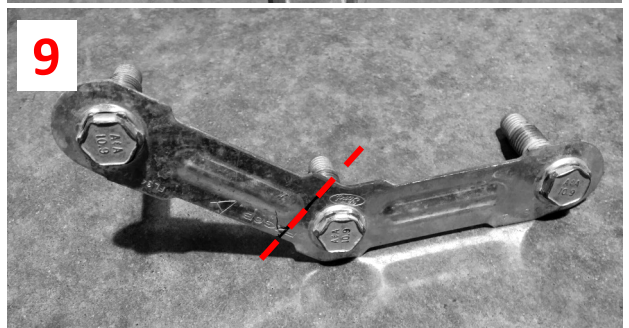
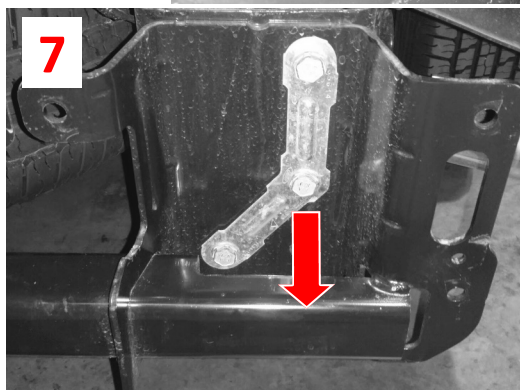
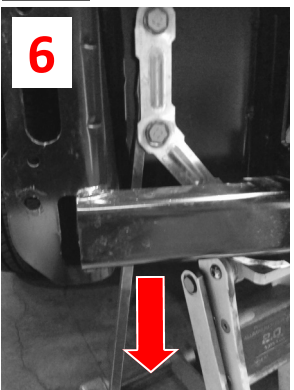
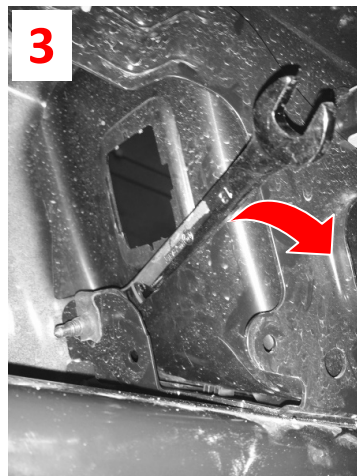
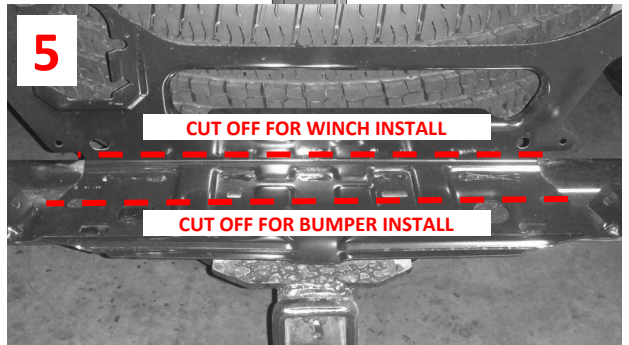
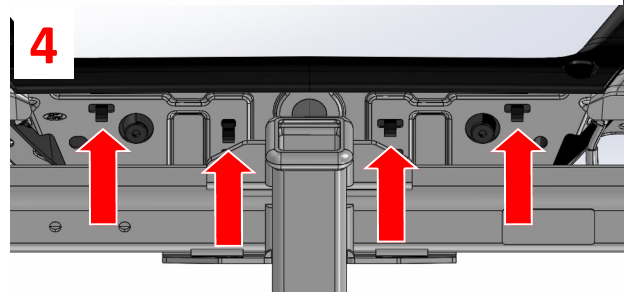
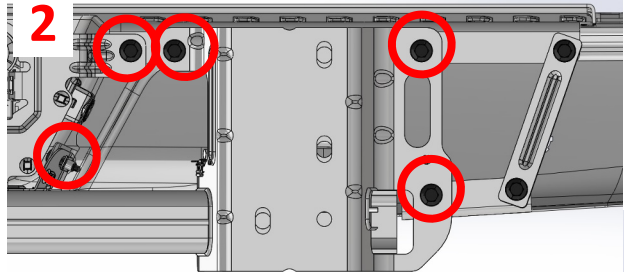
**5** Trim bracket on receiver hitch. Lower trim is necessary for bumper installation. The other is required if you intend to install a winch.

**6** Use a jack to support receiver hitch.

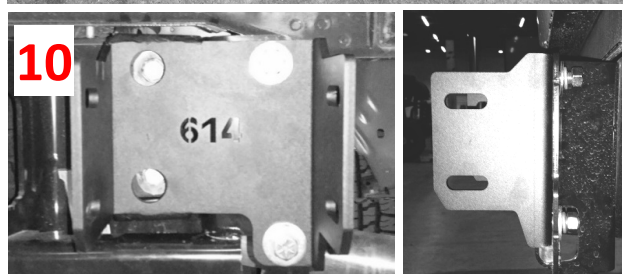
**7** Retainer washers are holding the three bolt tabs and must be hammered out

**8** Remove OEM Triple Nut Plate one side at a time.

**9** Cut OEM Triple Nut Plate as shown.



**10** Install Road Armor bracket one side at a time using the now Double Bolt Tabs in bracket, Single Bolt Tab through lower hitch mount and the included 1/2" hardware. Outer holes may need to be drilled to 1/2" , if this is necessary be sure to paint.



- 11** Install Double Nut Plates inside bumper mount as shown.
- 12** Measure side to side on bumper and adjust brackets if needed.
- 13** Install bumper using supplied 1/2" hardware checking bumper alignment and tighten down.

