



# INSTALL INSTRUCTIONS

## Front Stealth Bumper

Product : 615R0B, 615R4B, 615R2B

Application : 2015+ Ford F-150

( WINCH and NON-WINCH )

## ⚠ WARNING

Read the instructions completely before beginning installation. Before tightening bolts, drilling or cutting where required, check to make sure there are no obstructions such as brake, fuel or electrical lines which may be damaged. Also keep in mind this is an after-market product and MAY require minor shimming and/or trimming, reaming, etc. for proper fit. Road Armor is not responsible for any damages to vehicle.

## ⓘ IMPORTANT NOTICE

- Be sure to inspect and test fit your product to ensure proper fitment before having it coated, painted, bed lined, etc.
- Road Armor will not be responsible for the cost of coating your unit if any problems with fit or finish are not noted and addressed beforehand.
- This bumper does not accommodate front Sonar.

## SAFETY FIRST!

- FOLLOW ALL INSTRUCTIONS, YOUR SAFETY AND THE SAFETY OF OTHERS IS MOST IMPORTANT.
- WEAR APPROPRIATE EYE PROTECTION AND EXERCISE CAUTION WHEN DRILLING / CUTTING

## REQUIRED TOOLS

Metric and SAE Socket Sets and Wrenches

Small Pry Bar or Large Flathead Screwdriver

Needle Nose Pliers

## INCLUDED HARDWARE

(10) 1/2" x 1.5" Bolt Tabs

(12) 1/2" x 1.5" Grade 8 Bolts

(10) 1/2" Grade 8 Washers

(10) 1/2" Grade 8 Lock Washers

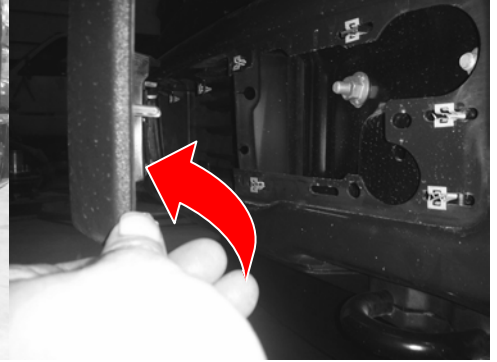
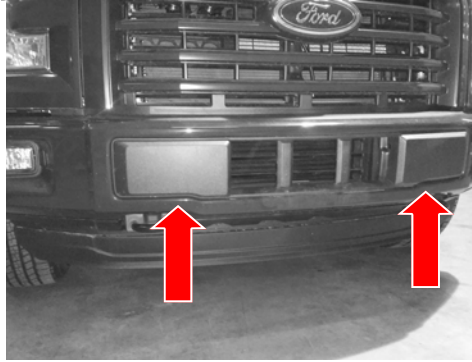
(10) 1/2" Grade 8 Nuts

(4) Triple Nut Plates

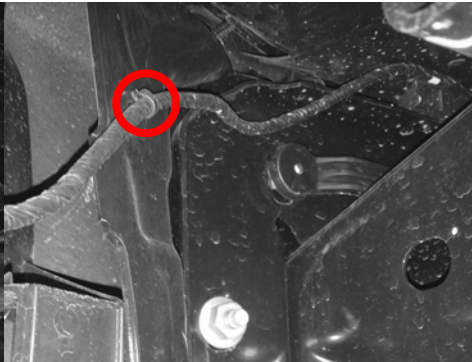
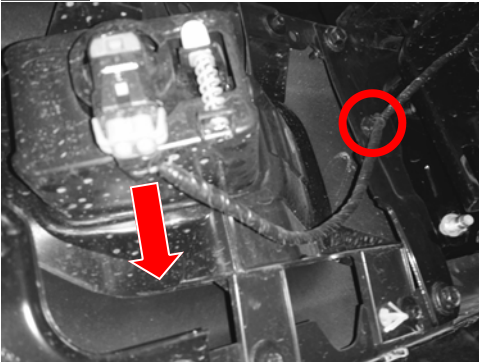
(1) Extra Stainless Logo Bolt Kit for Nut Plates

(1) Stainless Steel Road Armor Logo Letters and Bolt Kit

**1** Remove the plastic cover from front of factory bumper to gain access to mounting bolts behind.



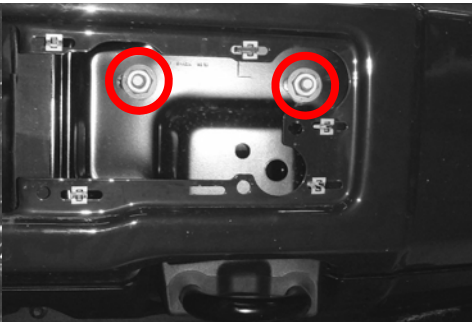
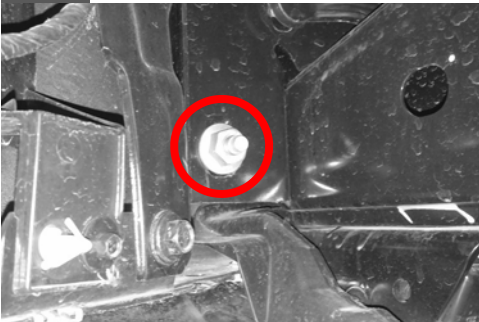
**2** Disconnect Lights and Remove Wiring from Bumper.



**3** Remove nut on backside of factory bumper on both sides.

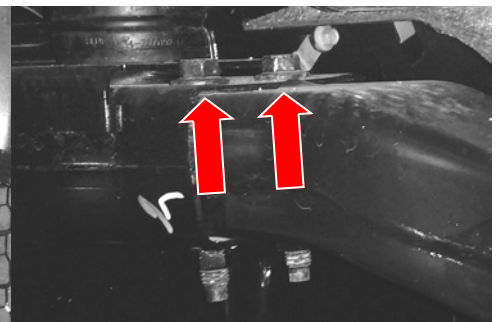
**4** Remove two (2) nuts per side where you removed the plastic cover.

**5** Lower bumper and remove plastic push retainers from rubber piece.



**6** Remove factory tow hooks and discard.

**7** Loosen frame extension bolts, two on each side.

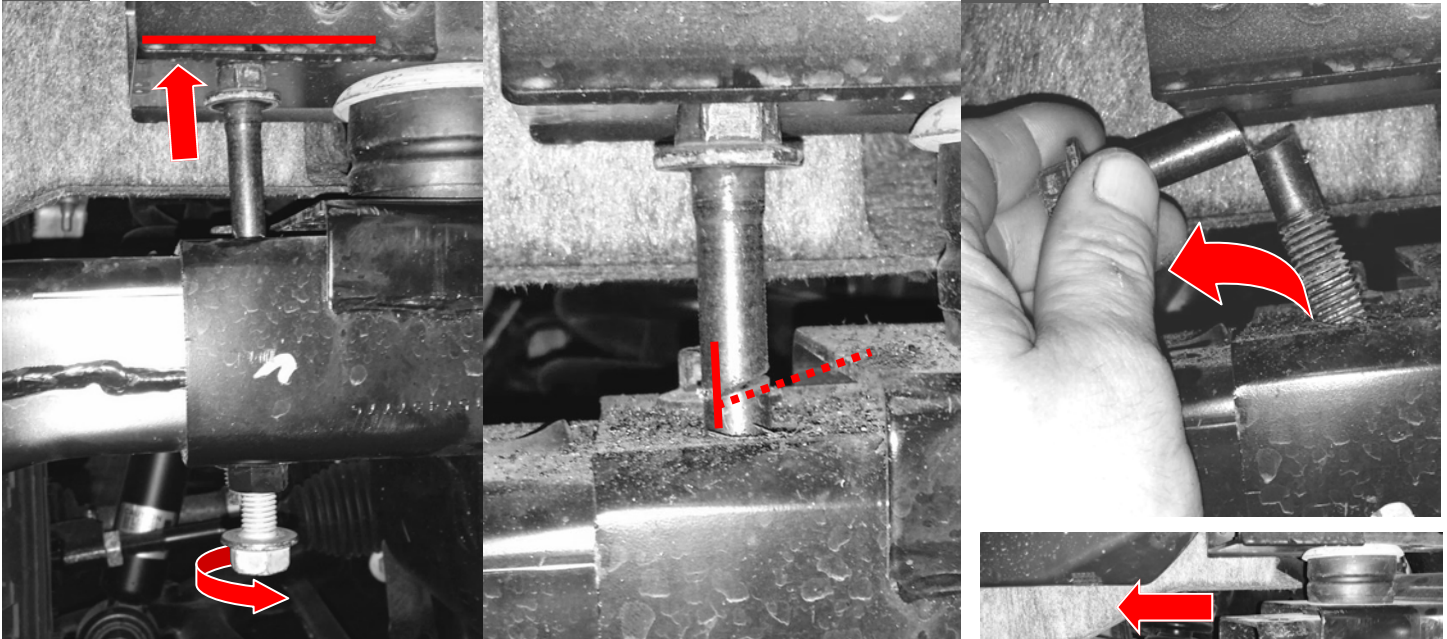




**8** One at a time, thread the included silver flanged head bolt through the nut at the bottom to press the long frame extension bolt up against body to keep it from moving or spinning.

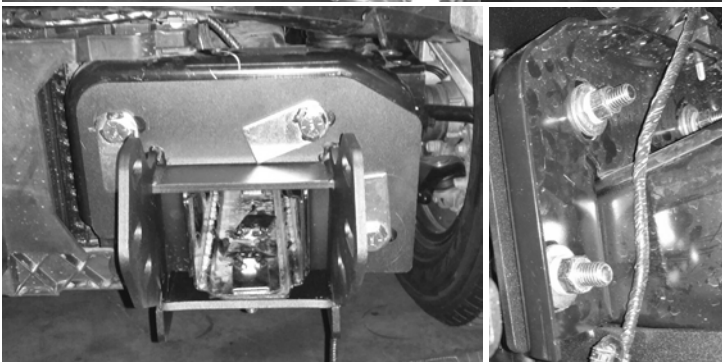
**9** Now, using a sawzall, hacksaw or cut off wheel, CAREFULLY cut the top bolt ALMOST all the way through.

**10** Bend and remove bolt.



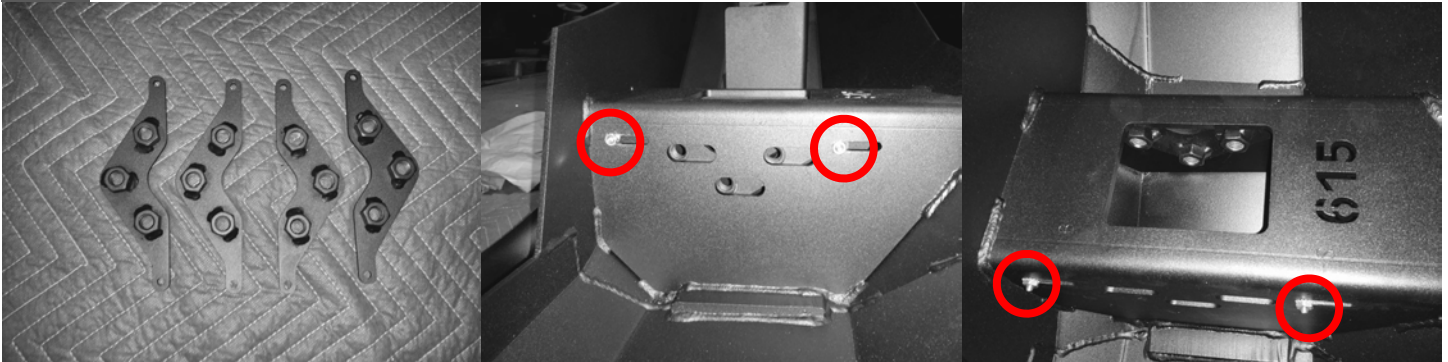
**11** Remove frame extension, it will be tight to get passed inner plastic part, don't get discourage, just use more force.

**12** Trim rubber from plastic are dam using razor blade or knife as shown and discard.



**13** Install brackets using five (5) bolt tabs, followed by a washer, lock washer and nut. Do not tighten bolts fully, or you won't be able to adjust the bumper's fitment and will have difficulty aligning brackets to bumper.

**14** Install triple nut plates into bumper, two (2) on each side, using small stainless hardware as shown.



**15** Measure left to right on bumper and adjust brackets to the same distance before attempting fit up.

**16** Install winch or 20 inch LED light bar depending whether you have the winch or non-winch bumper

**17** Install Road Armor bumper using supplied 1/2-inch hardware. Bolt / Lock Washer / Washer > Then align and tighten all hardware.

