

# ROAD



# ARMOR

## 2011- 2012 FORD SUPERDUTY FRONT BUMPER INSTALL INSTRUCTIONS



### Warning!

Read the instructions completely before beginning the installation. Before tightening bolts check to make sure that there are no obstructions such as brake, fuel or electrical lines that may be damaged. Also keep in mind this is an aftermarket product and MAY require some minor shimming and or trimming, reaming etc. To fit properly.

### IMPORTANT NOTICE

IF YOU ARE RECEIVING THIS ROAD ARMOR PRODUCT RAW/UNCOATED.

BE SURE TO INSPECT AND OR TEST FIT YOUR PRODUCT TO ENSURE PROPER FITMENT AND ADEQUATE SURFACE PREPARATION BEFORE HAVING YOUR PRODUCT COATED, PAINTED, BED LINED, ETC.

ROAD ARMOR WILL NOT BE RESPONSIBLE FOR THE COST OF COATING YOUR UNIT IF ANY PROBLEMS WITH FIT OR FINISH ARE NOT NOTED AND ADDRESSED PRIOR TO HAVING YOUR PRODUCT COATED.

THANK YOU

### SUGGESTED LIGHTS THAT FIT THIS UNIT:

PIAA 510 - Part Numbers (5161, 5164, 5192, 5190, 5196). Warn 350F -  
Part Number (82410).



### TOOLS NEEDED

- Yourself and a strong friend / bumper jack.
- Socket set, Ratchet & Wrenches (metric & standard)
- Common Sense a Tape Measure and a bit of Patience



**STEP 1:** Make sure you have all necessary tools and hardware.

Hardware Kit Includes : ( all Grade 8 )

- (4) Double Bolt Plates
- (2) 3 Way Nut Plates
- (4) 1/2-13 x 1.5" Bolts
- (4) 1/2" Push On Retainers
- (16) 1/2" Flat Washers
- (12) 1/2" Lock Washers
- (12) 1/2"-13 Hex Nut
- (6) 7/16"-14 x 1.5" Bolts
- (6) 7/16" Flat Washers
- (6) 7/16" Lock Washers
- (4) 3/8" Socket Head Cap Screw (For Winch)
- (4) 7/16" Socket Head Cap Screw (For Winch)
- (1) ROAD ARMOR LOGO (Large)
- (4) ALLEN HEAD BOLT & NUT (for logo)

**STEP 2:**

- Park on a level surface
- Pop Hood
- Remove license plate
- Disconnect battery
- Disconnect Factory Fog Lights if truck is equipped.
- Mask the front of the body to avoid scratches or chips in paint when uninstalling/installing the bumpers.

**STEP 3:**

- Start by removing the two bolts on the outer bumper brace with a 13mm socket. The braces are near the outer edges of the bumper on each side.

Repeat this step for the other side of the truck.

Picture 2

- Remove 3 plastic button clips from rubber splash guard by hand. The splash guard is located in the center of the truck just behind the bumper.

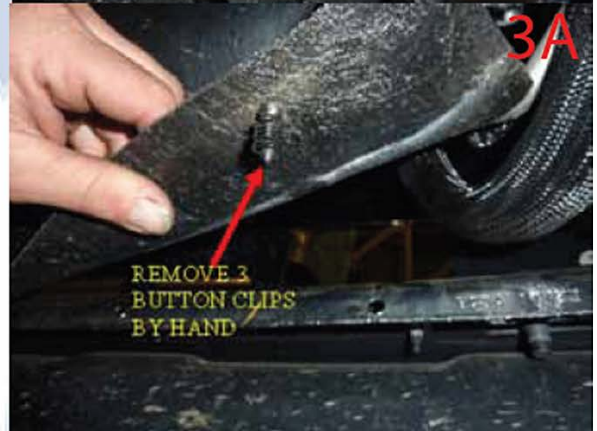
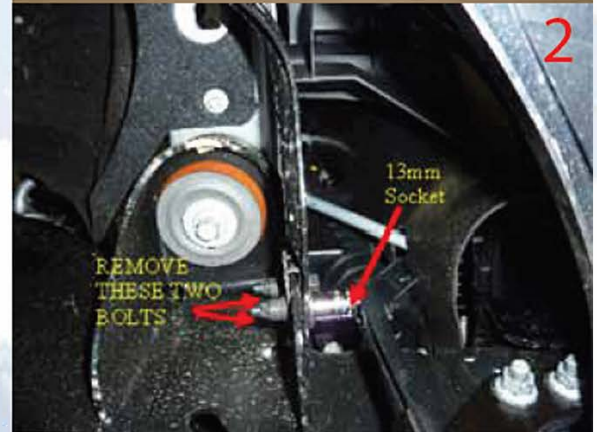
Picture 3A-3B

- **NOTE:** Bumper will be removed during this step. Be prepared to hold bumper in place and remove once bolts are removed.

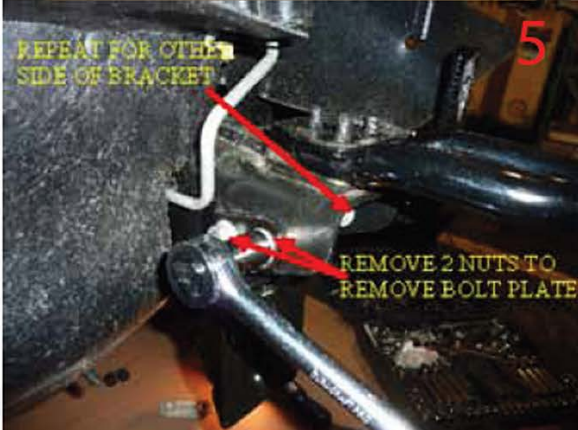
Remove the two bolts next to the tow hook using an 18mm socket.

Repeat this step for the other side of truck to remove front bumper from truck.

Pictures 4A-4B







- Remove 4 nuts from the two bolt plates to remove lower frame bracket. Use a 18 mm socket to remove the nuts from the bolt plate.

Once complete remove lower frame bracket from other side of truck.

Picture 5

- Remove plastic button clip from top of tow hook. This is easily removed by hand.

Repeat for other side

Picture 6

- The last step before install is removing the tow hooks. To remove the tow hook remove 3 bolts from under side of hooks using a 15mm socket.

Repeat this step for the other side of the truck

Picture 7A-7B

- The frame should look like the picture below when all components are removed. Its time to install your road armor bumper!

Picture 8

### STEP 4:

- Place first Road Armor frame bracket onto frame with angle side of bracket facing the lower outer side of the truck.

Install mirror opposite frame bracket on other side of truck

Picture 9

- Insert one ½" -13 x 1.5 bolt, Two ½" flat washers, One ½" lock washer, and one ½" nut on each side of the mounting bracket.

Repeat this step for other frame bracket

Picture 10

- Place 3 Way nut plate on top of frame brackets so that it matches up with slots. Insert one 7/16" bolt, flat washer, and lock washer from the bottom side of the frame bracket up into the nut plate. Hand tighten all hardware on frame bracket. This will allow for fine adjustment of brackets once bumper is installed.

Repeat this step for mirror opposite frame bracket

Pictures 11A and 11B

- Insert bolt plate into the lower slots on the bumper weld in brackets. Once bolt plate is inserted into lower slots push one ½" push on retainer to hold bolt plate onto bumper.

Picture 12

**NOTE:** We recommend not putting the other bolt plate in place on this bracket until the bumper is on the truck to allow the bumper to be easily placed onto the frame brackets.





- It's time to install your road armor bumper. Using either a lift or a couple buddies, move the bumper into place. The bolt plates that are already placed into the bumper will line up with the slots in the frame bracket. If needed use a tape measure to align the bolt plates with proper spacing to make mounting the bumper easier.

Picture 13

- Lift the bumper and slide the bolt plates into the lower slots in the frame brackets. Once bolt plates slide into to frame bracket slots insert one 1/2" -13 x 1.5 bolt, 1/2" flat washer, 1/2" lock washer, and one 1/2" nut on each bolt in bolt plate. Hand tighten all hardware.

Repeat this step for the other side of the bumper

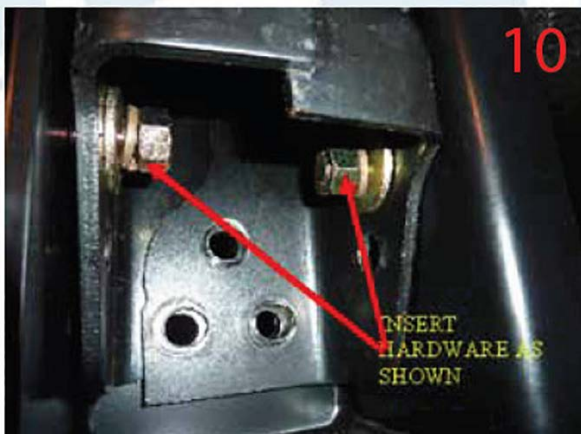
Picture 14

- Place another bolt plate into the other slots on the weld in brackets. Once both bolt plates are inserted into the bumper insert one 1/2" -13 x 1.5 bolt, 1/2" flat washer, 1/2" lock washer, and one 1/2" nut on each bolt in bolt plate. Hand tighten all hardware and prepare for final adjustment.

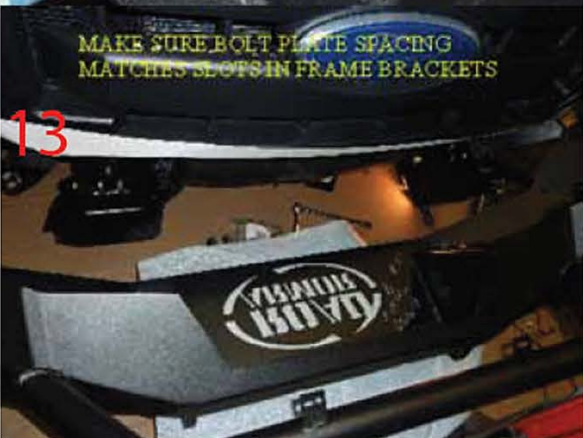
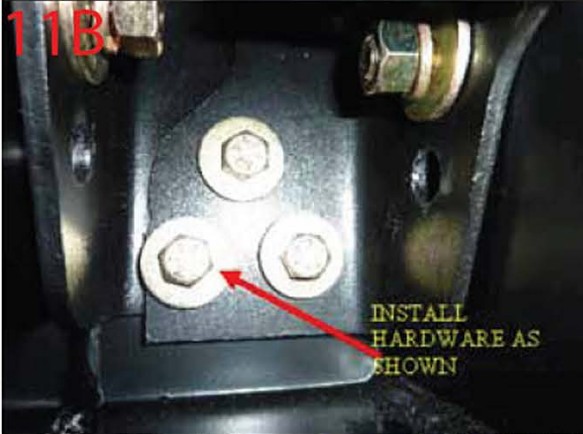
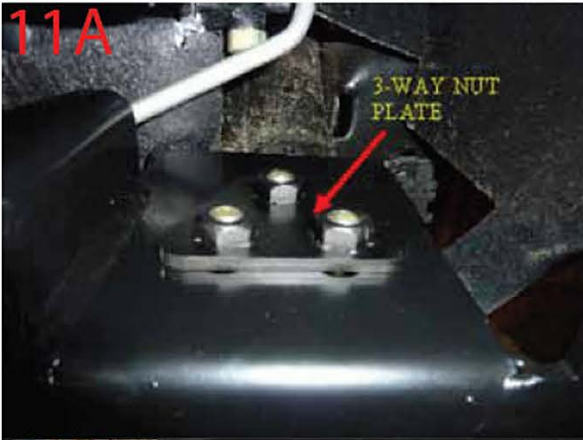
Repeat this step for other side of bumper.

Picture 15

- Make final adjustment to bumper and tighten all hardware. Once bumper is fully adjusted attach stainless steel road armor logo to front of bumper with supplied hardware.







- Basque in glory. Congratulations!