



## **INSTALL INSTRUCTIONS**

**Application : MID-SIZE TRUCK BEDs**

**BED RACK SYSTEM INSTALLATION:**

**500BRS52B (5ft. BED RACK) & Bracket Kits**

**550BRS59B (6ft. BED RACK)**

**Application : FULL-SIZE TRUCK BEDs**

**BED RACK SYSTEM INSTALLATION:**

**600BRS59B (6ft. BED RACK) & Bracket Kits**

**650BRS69B (6 1/2ft. BED RACK)**

**Accessory Installs Included**

## I WARNING

Read the instructions completely before beginning installation. Before tightening bolts, drilling or cutting where required, check to make sure there are no obstructions such as brake, fuel or electrical lines which may be damaged. Also keep in mind this is an after-market product and MAY require minor shimming and/or trimming, reaming, etc. for proper fit. Road Armor is not responsible for any damages to vehicle.

## ⓘ IMPORTANT NOTICE

- Be sure to inspect and test fit your product to ensure proper fitment before having it coated, painted, bed lined, etc.
- Road Armor will not be responsible for the cost of coating your unit if any problems with fit or finish are not noted and addressed beforehand.

## SAFETY FIRST!

- FOLLOW ALL INSTRUCTIONS, YOUR SAFETY AND THE SAFETY OF OTHERS IS MOST IMPORTANT.
- WEAR APPROPRIATE EYE PROTECTION AND EXERCISE CAUTION WHEN DRILLING / CUTTING

## REQUIRED TOOLS

Metric and SAE Socket Sets and Wrenches

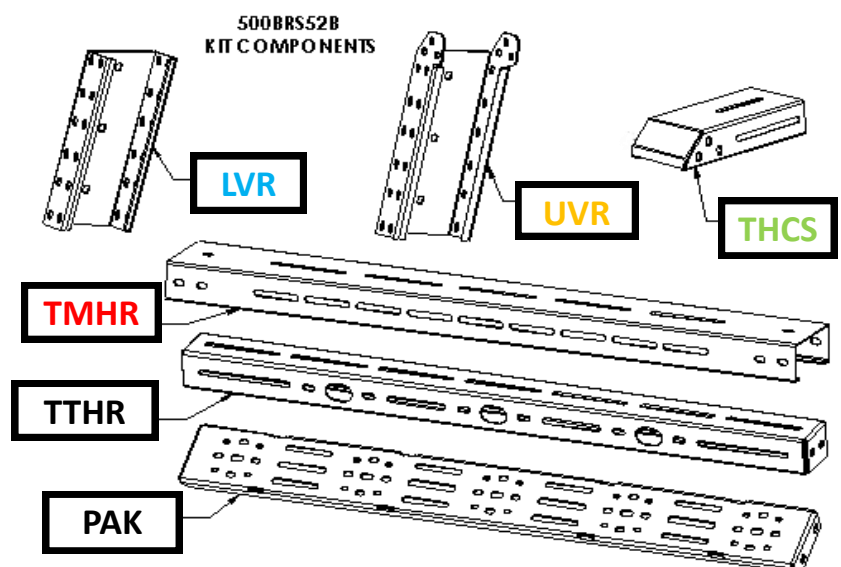
## INCLUDED HARDWARE

### 500BRS-BOLT KITS

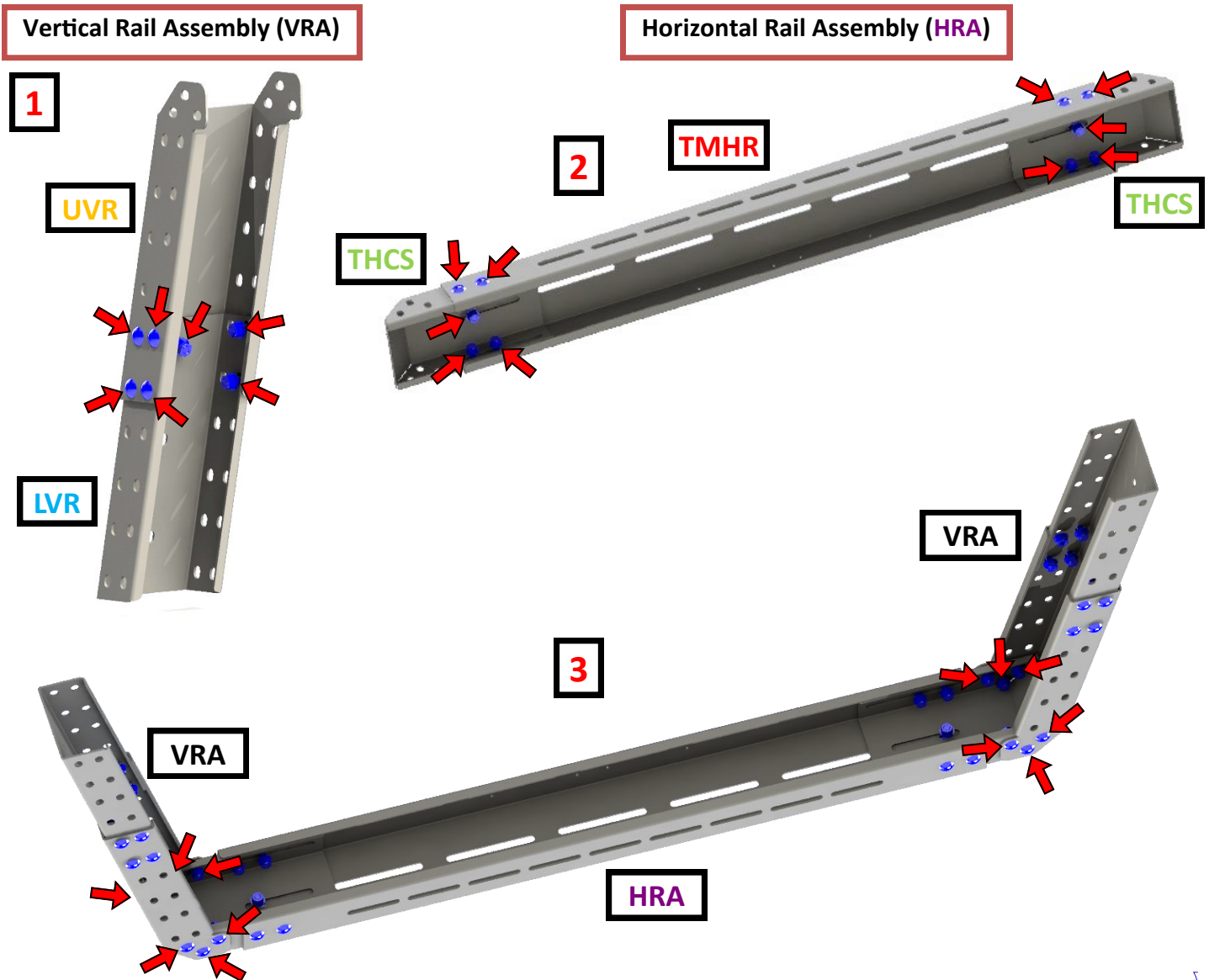
- (88) 3/8" x 1" SS-Carriage Bolts
- (88) 3/8" Nuts
- (88) 3/8" SAE Washers
- (4) #10 Button Bolts
- (4) #10 Nuts

### 500BRS52B Main Rack Components

- (4) 12" Main Lower Vertical Rail (**LVR**)
- (4) 14" Main Upper Vertical Rail (**UVR**)
- (4) Main Top Horizontal Corner Support (**THCS**)
- (2) 5Ft. Top Main Horizontal Rail (41.5" - **TMHR**)
- (2) 5Ft. Top Tent/STM Horizontal Rail (41.5" - **TTHR**)
- (2) 5Ft. Side PAK Horizontal Rail (41.5" - **PAK**)

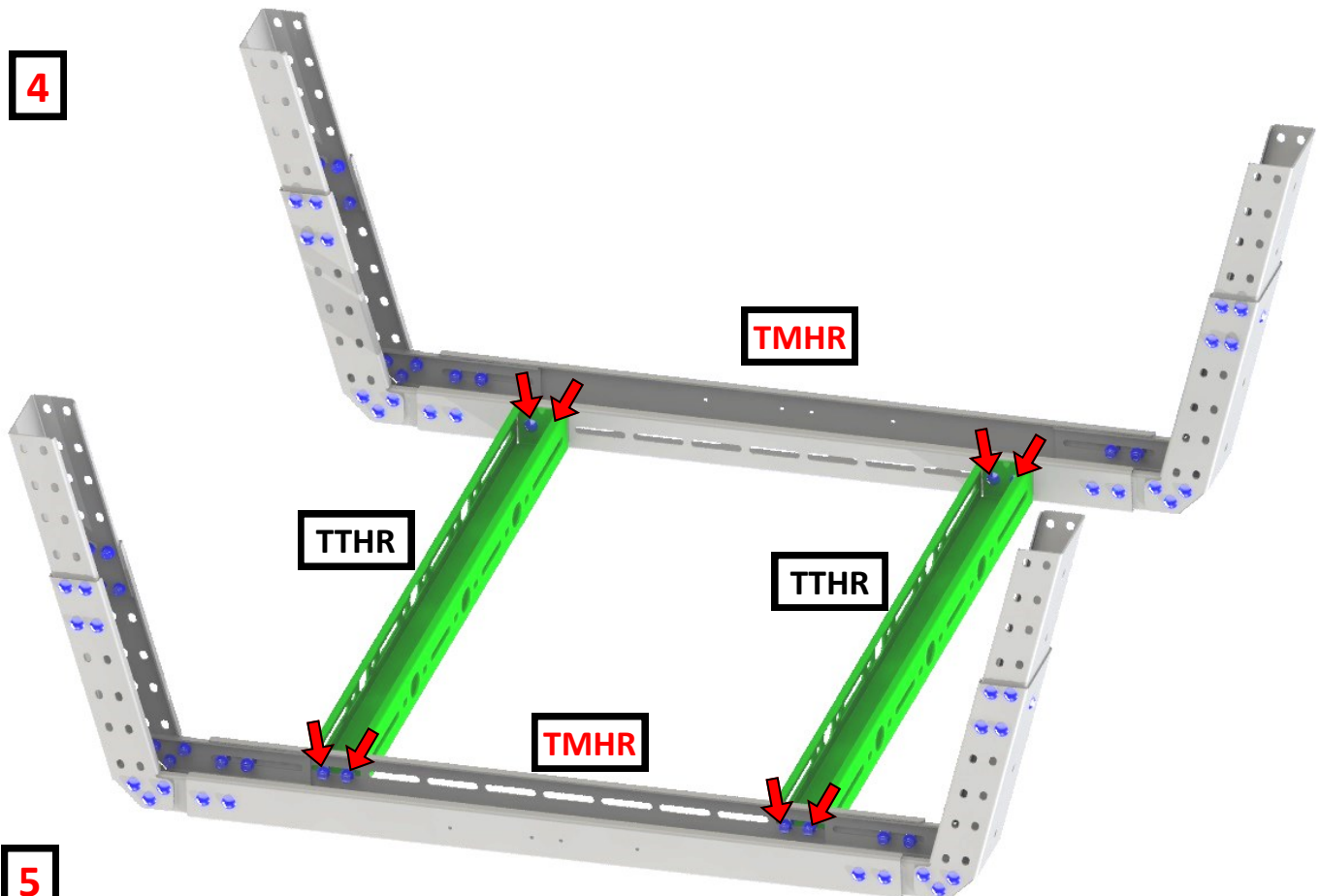


- 1** Loosely assemble Vertical Rail Assemblies (VRA) (4x) with 1—12” Main Lower Vertical Rail (LVR) to 1 - 14” Main Upper Vertical Rail (UVR) with 7 - 3/8” carriage bolts, washers, and nuts. (23” Level)
- 2** Loosely assemble Horizontal Rail Assemblies (HRA) (2x) with 2 - Main Top Horizontal Corner Support (THCS) to 1 - 5Ft. Top Main Horizontal Rail (41.5” - TMHR) using 10 - 3/8” carriage bolts, washers, and nuts. (23” Level)
- 3** Loosely assemble 2 - Vertical Rail Assemblies (VRA) to 1 - Horizontal Rail Assemblies (HRA) using 12 - 3/8” carriage bolts, washers, and nuts (2x). (23” Level)

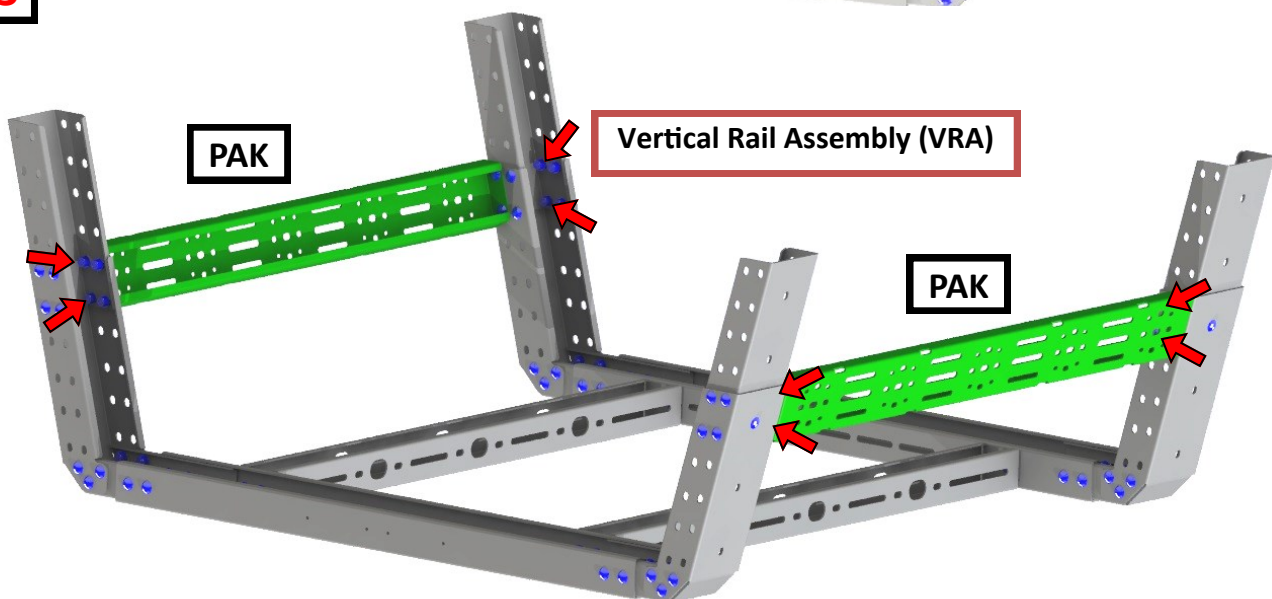


- 4** Loosely assemble each 5Ft. Top Tent/STM Horizontal Rail (41.5" - **TTHR**) in-between both 5Ft. Top Main Horizontal Rails (41.5" - **TMHR**) with 4 - 3/8" carriage bolts, washers, and nuts. (**2x**)
- 5** Loosely assemble each 5Ft. Side PAK Horizontal Rail (41.5" - **PAK**) in-between both Vertical Rail Assemblies (**VRA**) using 4 - 3/8" carriage bolts, washers, and nuts. (**2x**) **NOTE:** Side PAK Horizontal Rails (41.5" - **PAK**) can be

**4**



**5**



## 500BRS-BRCKIT INSTALLATION INSTRUCTIONS

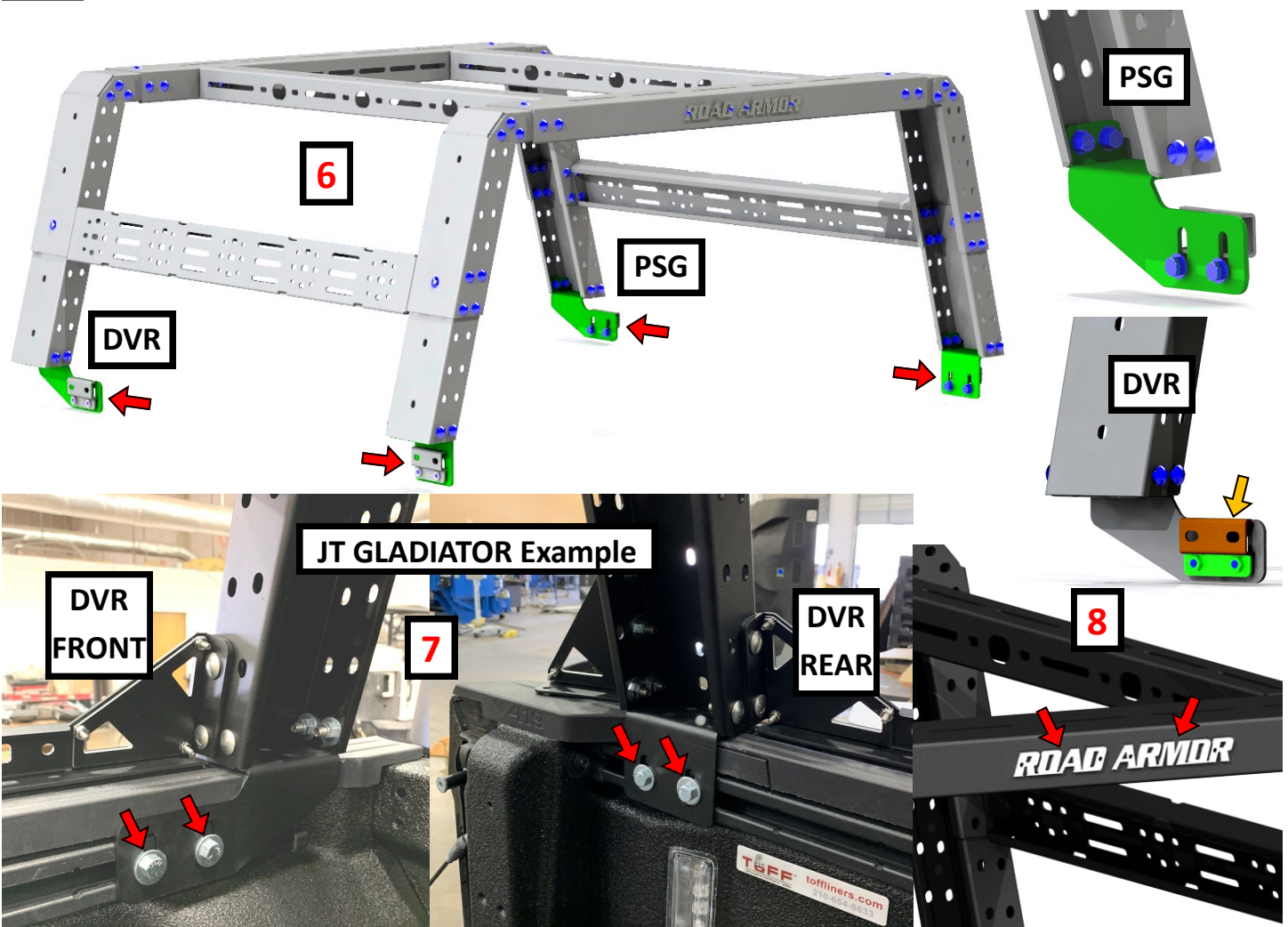
**6** Loosely assemble each **Bed Rail Bracket** into base holes of Vertical Rail Assemblies (**VRA**) using 4 - 3/8" carriage bolts, washers, and nuts. (4x) **NOTE:** Front "offset" mounting brackets do have DVR & PSG sides, pay close attention to orientation when installing both brackets. **Gladiator** requires "offset" brackets near cab.

**NOTE** **Toyota TACOMA & TUNDRA** requires "offset" brackets near tailgate. \*\*Bed rack installs reversed.\*\*

**7** Using additional assistance, place assembled **bed rack system** onto top of bed rail with **bed rail brackets** firmly against the sides of bed rails. If **Gladiator** is equipped with "in-bed rail system" use provided **3/8" nut plates** and 2 - 3/8"x 1" bolts / washers provided to secure **bed rail brackets** onto "in-bed rail system". (4x) **NOTE:** If **Gladiator** is not equipped with "in-bed rail system", use **No-Drill Bracket** onto inside of bed rail and secure it to **bed rail brackets** using 2 - 3/8"x 1-1/2" HEX bolts, washers, and nut plate provided. 4x (JT)

**NOTE** If **Tacoma** is equipped with "bed deck rail" **8 - 3/8" T-Slot Nuts** must be purchased to secure **Bed Rail Bracket** onto "bed deck rail". (Amazon or other hardware retailers will have available online.)

**8** Install **RA-LOGO** using #10 hardware. \*Tighten ALL hardware at this time\*



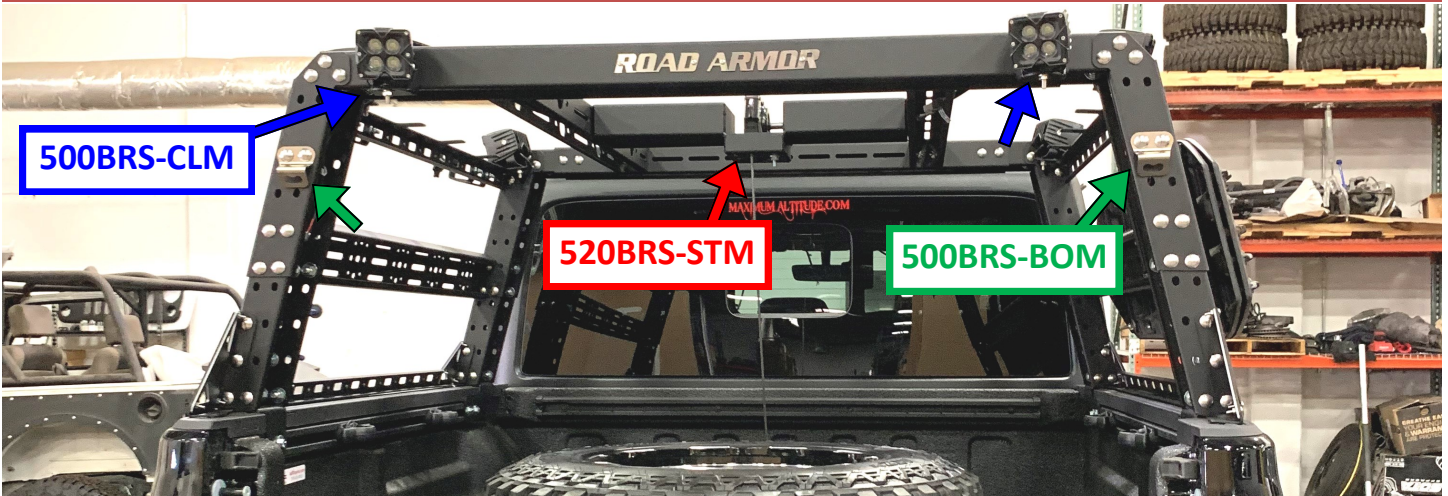
**BED RACK SYSTEM ADJUSTABLE BETWEEN 14" - 19" - 23"**



**520BRS-STM** (JT - Spare Tire Mount) Installed onto GLADIATOR JT **\*ONLY\***

**500BRS-BOM** (Bottle Opener) Installed (**2x**)

**500BRS-CLM** (Light & Speaker Mount) Installed (**2x**)



**500BRS-HLM** (High Lift Jack Mount - Pair) Installed

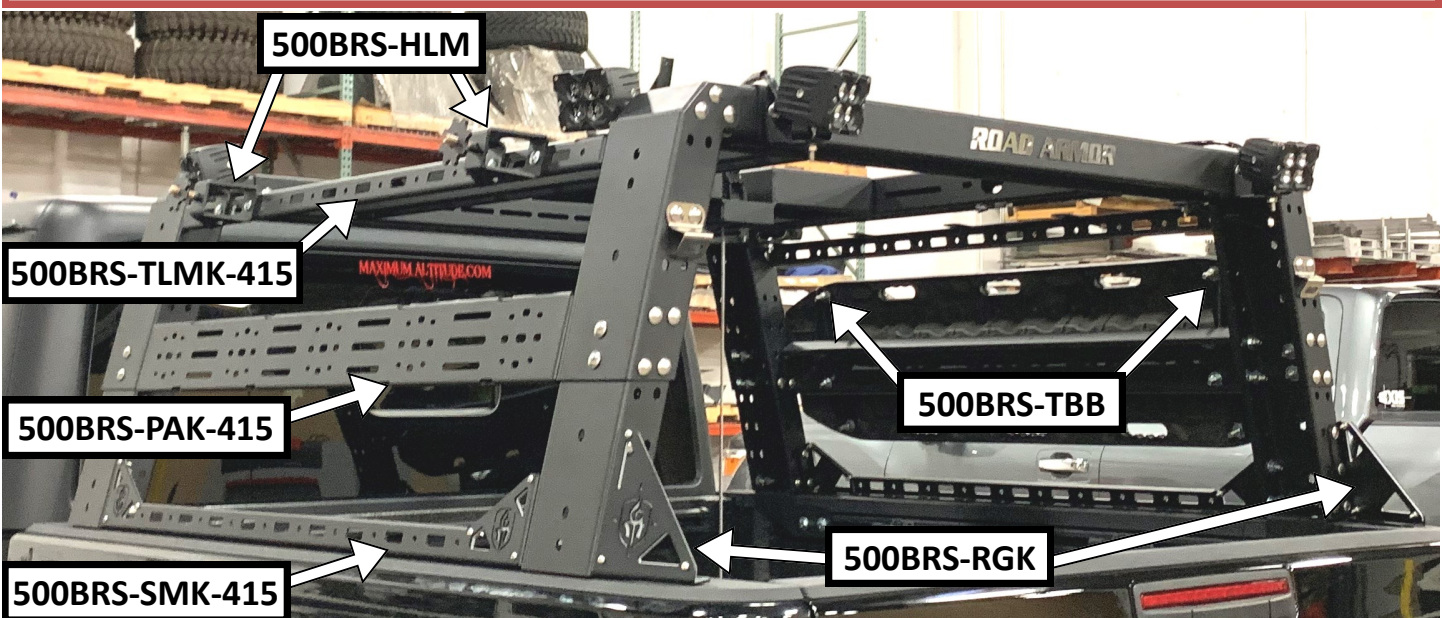
**500BRS-RGK** (Vertical Support Mounts - Pair) Installed

**500BRS-PAK-415** (Side Rail Accessory Mount - Pair (ROTOPAX) Installed

**500BRS-SMK-415** (Lower Side Rail Accessory Mount - Pair) Installed

**500BRS-TLMK-415** (Upper Side Rail Accessory Mount / Light - Pair) Installed

**500BRS-TBB** (Traction Board Brackets—for MAXTRAX Pin Mounts) Installed



**BED RACK SYSTEM - ALL Accessories**



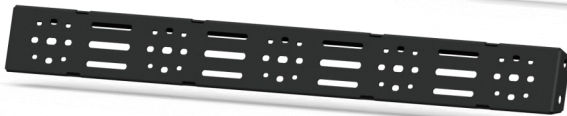
**500BRS-BOM**



**500BRS-CLM**



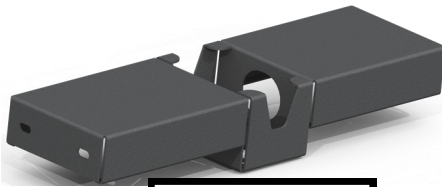
**500BRS-HLM**



**500BRS-PAK-415**



**500BRS-TBB**



**520BRS-STM**



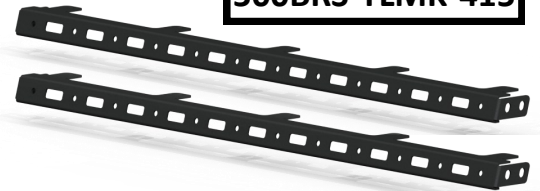
**500BRS-RGK**



**500BRS-SMK-415**



**500BRS-TLMK-415**

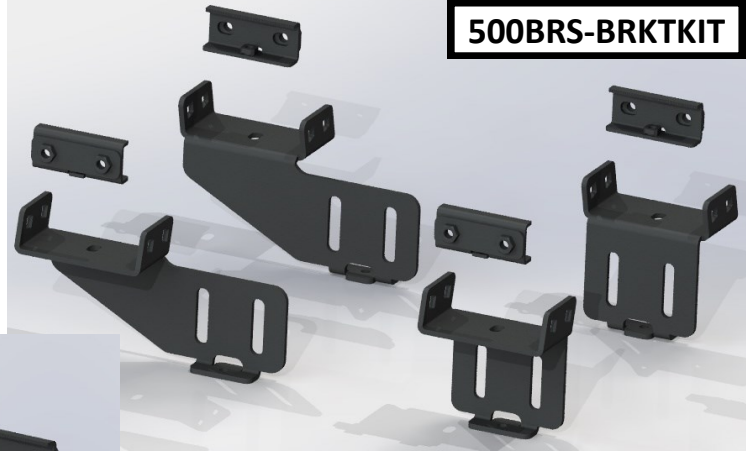




**Bracket Kit Types for all Mid-Size & Full Size Trucks**

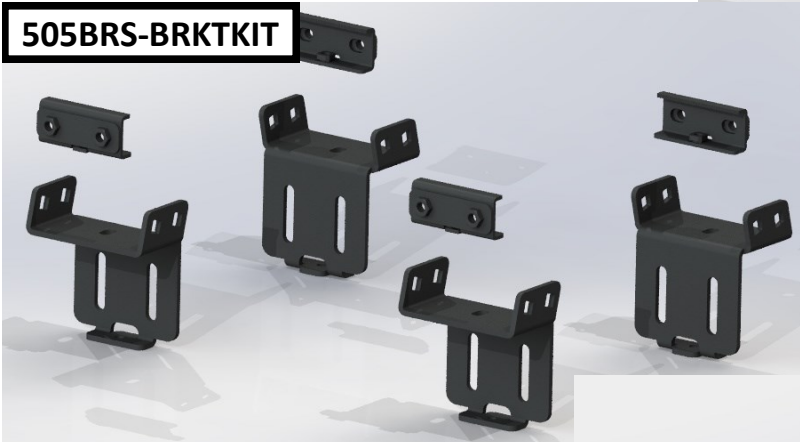
**500BRS-BRKTKIT Main Components**

- (1) Off-Set Main Bed Rail Bracket (**DVR**)
- (1) Off-Set Main Bed Rail Bracket (**PSG**)
- (2) Main Bed Rail Bracket (**RAIL**)
- (4) No-Drill Bed Rail Clip (**NDC**)
- (4) 3/8" Double Nut Plate (**DNP**)



**500BRS-BRKTKIT**

**505BRS-BRKTKIT**

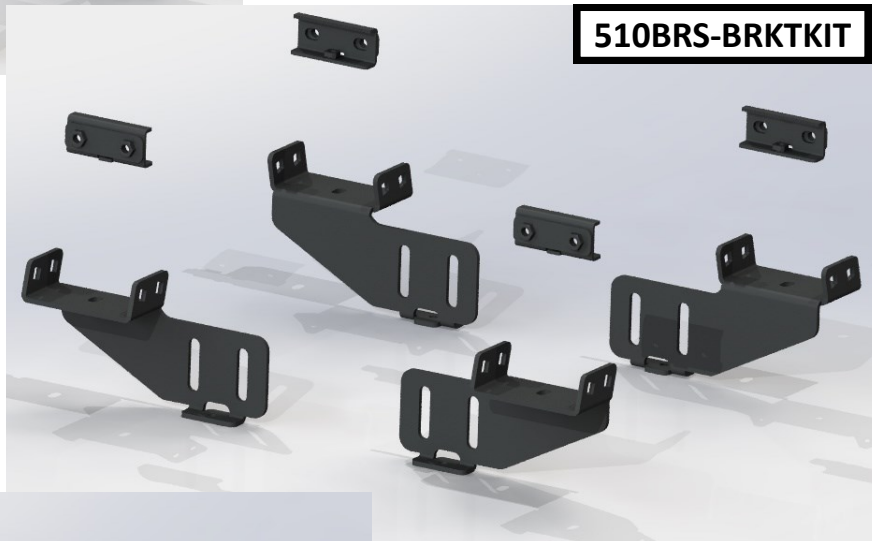


**505BRS-BRKTKIT Main Components**

- (2) Main Bed Rail Bracket (**RAIL**)
- (4) No-Drill Bed Rail Clip (**NDC**)
- (4) 3/8" Double Nut Plate (**DNP**)

**510BRS-BRKTKIT Main Components**

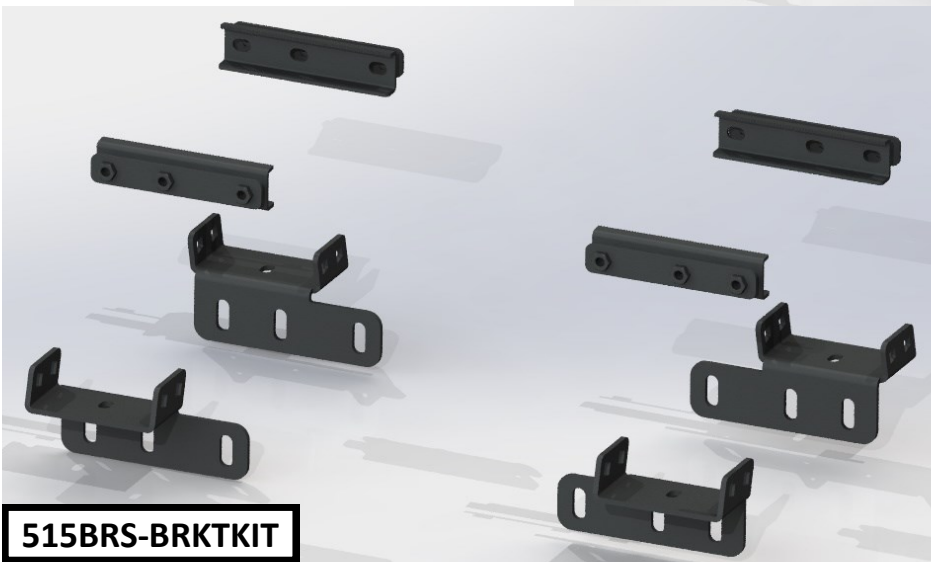
- (2) Off-Set Main Bed Rail Bracket (**DVR**)
- (2) Off-Set Main Bed Rail Bracket (**PSG**)
- (4) No-Drill Bed Rail Clip (**NDC**)
- (4) 3/8" Double Nut Plate (**DNP**)



**510BRS-BRKTKIT**

**515BRS-BRKTKIT \*FORD RANGER\* PARTS**

- (2) Off-Set Main Bed Rail Bracket (**DVR**)
- (2) Off-Set Main Bed Rail Bracket (**PSG**)
- (4) No-Drill Bed Rail Clip (**NDC**)
- (4) 3/8" Double Nut Plate (**DNP**)



**515BRS-BRKTKIT**

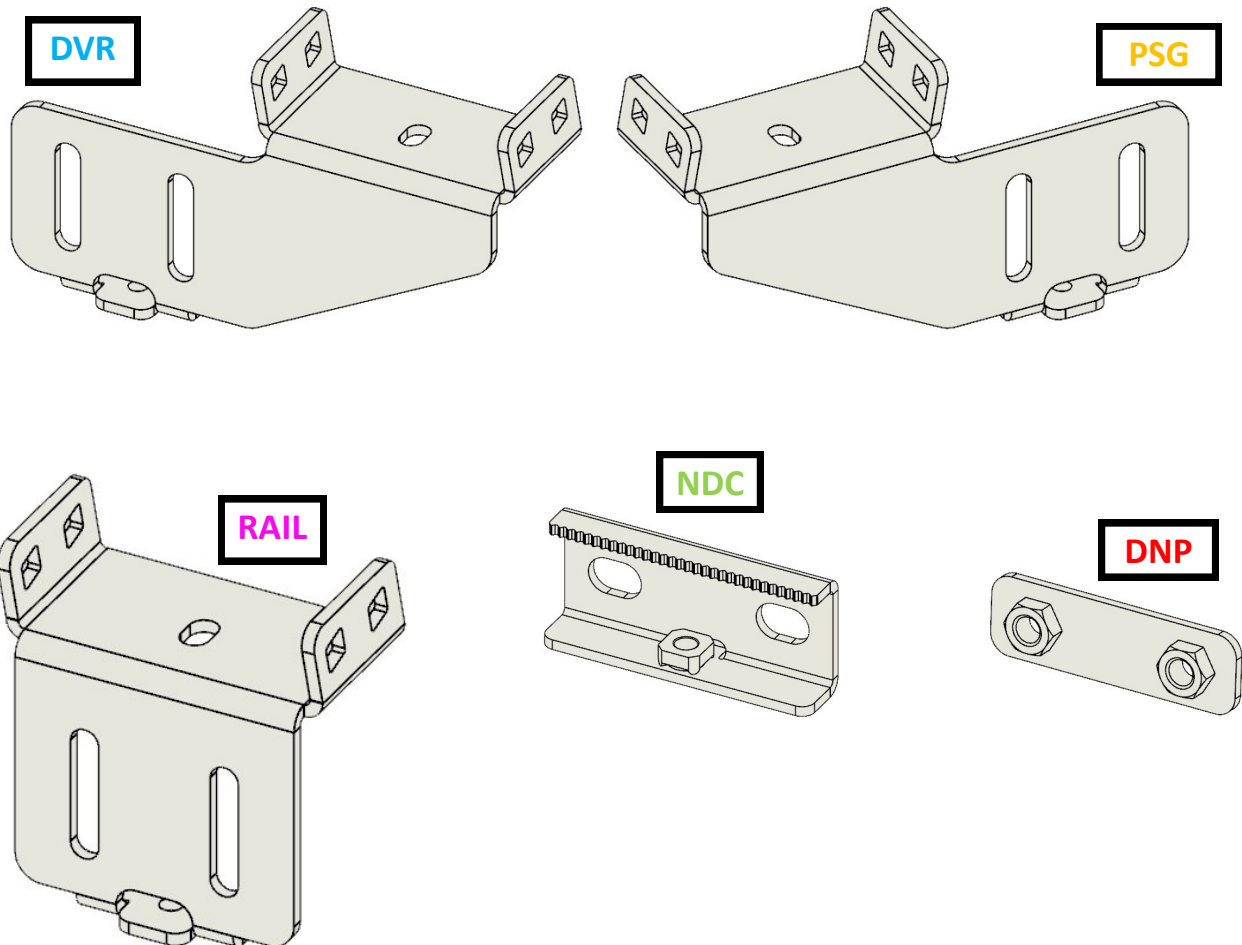
## 5##BRS-BRCKIT KIT & HARDWARE BREAK-DOWN

### 500BRS-BRCKIT BOLT KIT

- (16) 3/8" x 1" SS-Carriage Bolts
- (8) 3/8" x 1" Hex Bolts
- (8) 3/8" x 1 1/2" Hex Bolts
- (4) 1/4" x 1" x 2 1/2" Hex Bolts (Full Thread)
- (16) 3/8" Nuts
- (8) 1/4" Nuts
- (24) 3/8" SAE Washers
- (8) 3/8" Split-Lock Washers

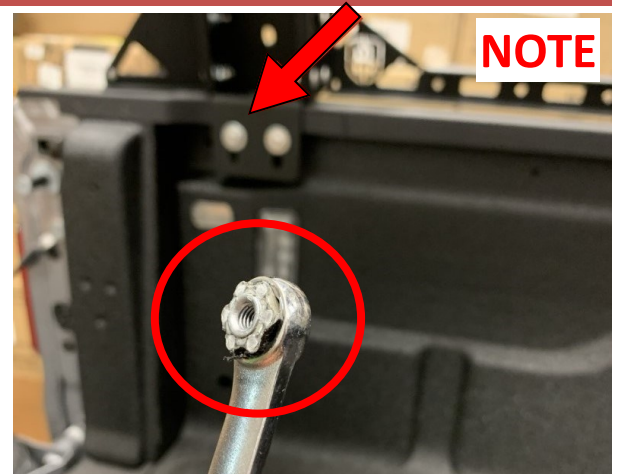
### 500BRS-BRCKIT Main Components

- (1) Off-Set Main Bed Rail Bracket (**DVR**)
- (1) Off-Set Main Bed Rail Bracket (**PSG**)
- (2) Main Bed Rail Bracket (**RAIL**)
- (4) No-Drill Bed Rail Clip (**NDC**)
- (4) 3/8" Double Nut Plate (**DNP**)
- (4) 2" x 4" 1/8in Thick Adhesive Pad



**NO-DRILL BRACKETS: 5##BRS-BRKTKIT ADDITIONAL NOTES**

**NOTE:** On Gladiator bed rails: Remove 8mm nut from inside of bed rail, near tail gate, using 13mm closed end wrench. Twist wrench until nut breaks free from inside of bed rail seam. Doing so will allow proper installation of **No-Drill Bracket** to inside of bed rail seam. **\*\*Not doing do will obstruct brackets\*\***



- 1 If **TRUCK** is not equipped with "in-bed rail system", use **No-Drill Brackets NDC (C-Shaped)** onto inside of bed rail and secure **NDC Bracket** loosely to **bed rail brackets** using 2 - 3/8 x 1-1/2" HEX bolts, lock washers, washers, and double nut plate provided. Mount C-shaped bracket with short (serrated) end on top and long end with 1/4" nut toward the bottom, ensure that bracket is pushed all the way to the top of the slot.
- 2 To securely lock **NDC Bracket** into place use one - 1/4" x 2 1/2" bolt & 1/4" HEX nut through bottom of bed rail bracket hole. (thread nut approximately 1/8" away from head of bolt.)
- 3 Install additional 1/4" HEX nut to hold long 1/4" bolt in place as you continue to thread the nut through the bolt, until it begins to thread through **NDC Bracket**. (Acting as a lock nut)
- 4 Once long 1/4" bolt has threaded through **NDC Bracket**, use both 1/4" nuts and tighten them against the **bed rail bracket**, locking them against each other and **bed rail bracket**, fully securing the **NDC Bracket** in place.

**\*\*Retorque ALL bolts every 500 miles to ensure they are kept secure\*\***

