



## **INSTALL INSTRUCTIONS**

**Jeep Wrangler JL Rear Mid-Width Bumper**

**Product : 5182R0B, 5182R1B (With TC-Hole)**

**Jeep Wrangler JL Rear Full-Width Bumper**

**Product : 5183R0B, 5183R1B (With TC-Hole)**

**\*NOTE WILL NOT ACCOMIDATE REAR STEALTH FENDERS\***

**Application : 2018-2019 Jeep Wrangler JL**

## I WARNING

Read the instructions completely before beginning installation. Before tightening bolts, drilling or cutting where required, check to make sure there are no obstructions such as brake, fuel or electrical lines which may be damaged. Also keep in mind this is an after-market product and MAY require minor shimming and/or trimming, reaming, etc. for proper fit. Road Armor is not responsible for any damages to vehicle.

## ⓘ IMPORTANT NOTICE

- Be sure to inspect and test fit your product to ensure proper fitment before having it coated, painted, bed lined, etc.
- Road Armor will not be responsible for the cost of coating your unit if any problems with fit or finish are not

## SAFETY FIRST!

- FOLLOW ALL INSTRUCTIONS, YOUR SAFETY AND THE SAFETY OF OTHERS IS MOST IMPORTANT.
- WEAR APPROPRIATE EYE PROTECTION AND EXERCISE CAUTION WHEN DRILLING / CUTTING

## REQUIRED TOOLS

Metric and SAE Socket Sets and Wrenches

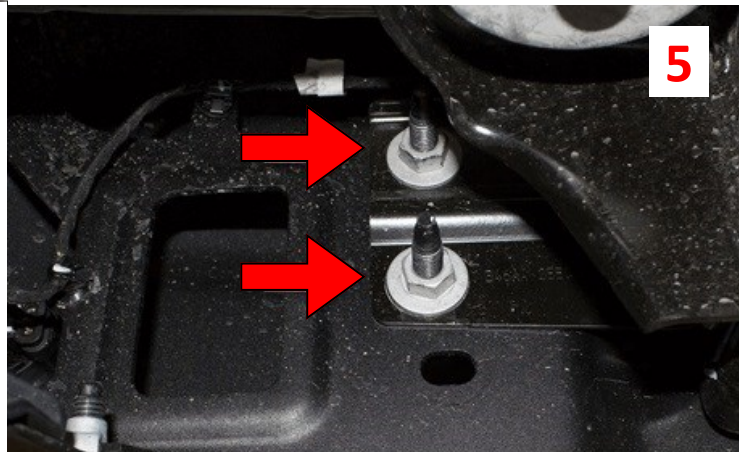
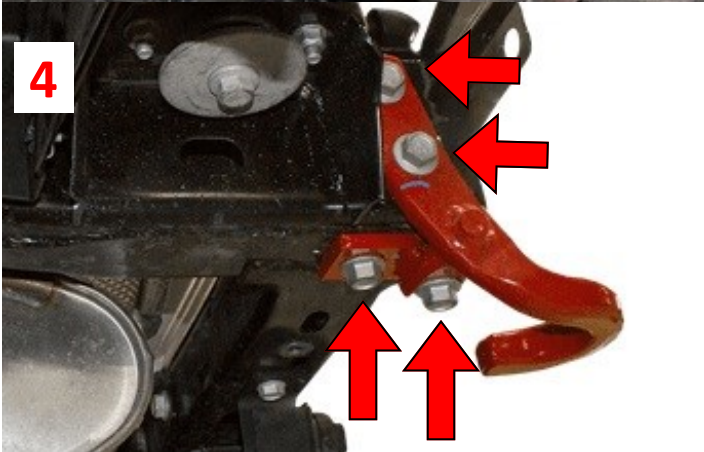
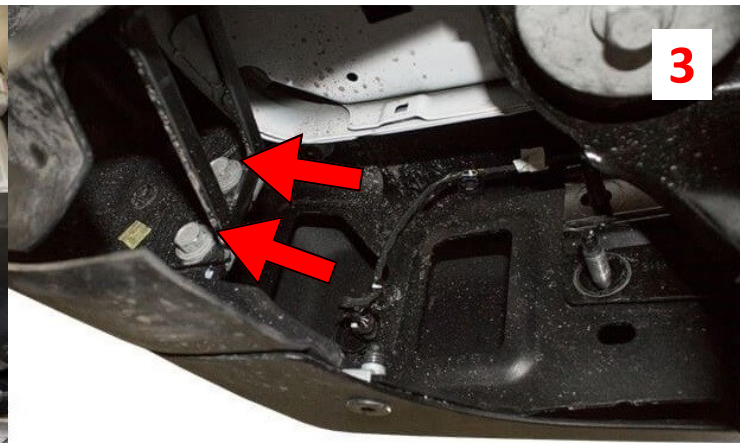
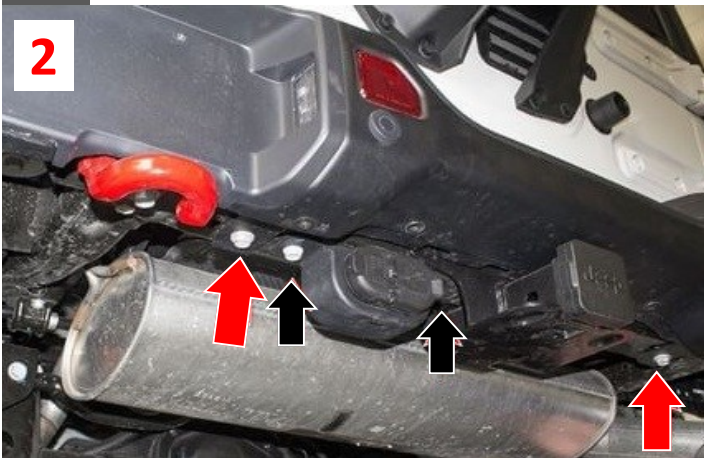
Screw Driver

## INCLUDED HARDWARE

- (6) 1/2" x 1.5" Bolt Tabs
- (6) 1/2" Keeper Washers
- (8) 1/2" Grade 8 Washers
- (8) 1/2" Hex Nut
- (8) 1/2" Grade 8 Lock Washers
- (2) 1/2" x 1.5" Grade 8 Bolts
- (1) 1/2" Double Nut Plates
- (1) Stain Steel Road Armor Logo Letters and Hardware
- (4) 1 1/16" Sensor Plug
- (4) 1 1/16" Sensor Grommet
- (4) 1/4" License Plate Screws
- (4) 1/4" License Plate Nylon Nuts
- (4) 1/4" Washers
- (2) 1/4" Lock Nut
- (2) 1/4" x 3/4" Bolts



- 1 Disconnect the rear bumper harness, release the clips holding the bumper end of the harness to the Jeep. Connector is located under the driver side of the Jeep
- 2 Using a 16mm socket, remove the two bolts securing the inner mounting brackets to the rear cross member.
- 3 Now remove the 2 bolts securing the rear bumper outer mounting brackets from each side of frame
- 4 Remove Dvr & Psg factory recovery hook using 21mm socket. Two bolts on the bottom and two through the side frame.
- 5 Remove both bumper bracket using 17mm socket two bolts through the frame for two nuts on bumper.
- 6 Remove both lower inner fender liner pieces from Jeep.
- 7 Pull off factory bumper and set aside.



- 8 If equipped, disassemble rear bumper, carefully remove all sensors and harnesses. **\*\*Note sensor location\*\***

**\*\*DISASSEMBLY COMPLETE\*\***



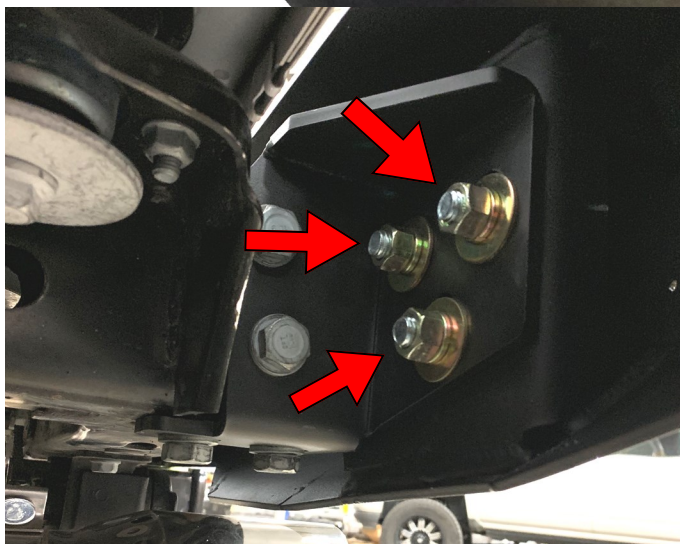
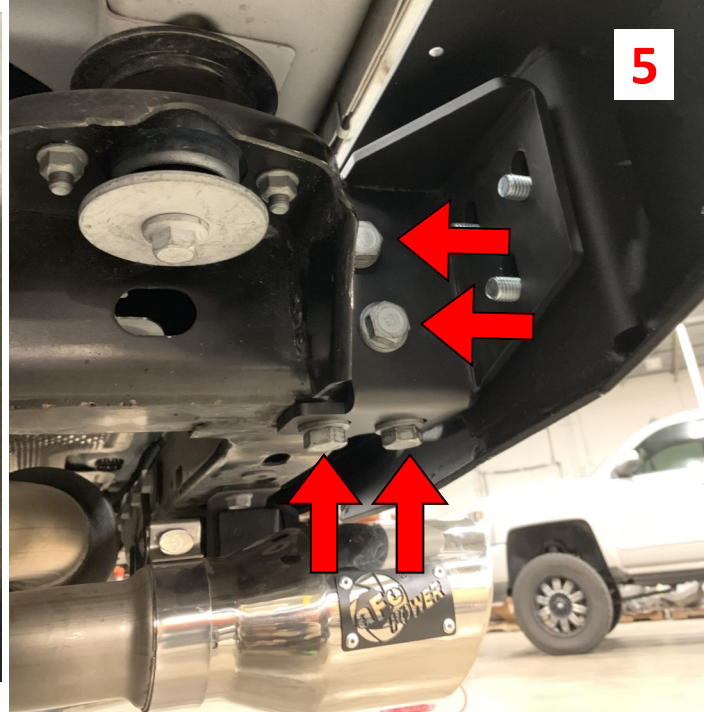
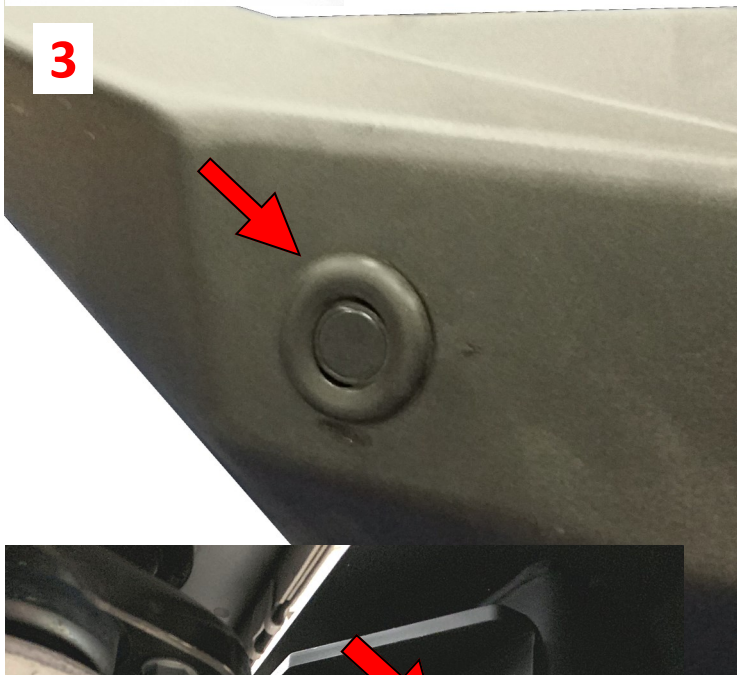
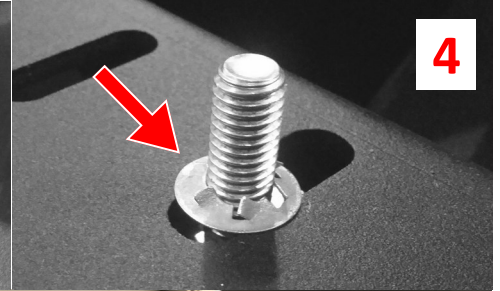
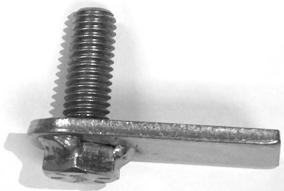
**IF YOU HAVE A TIRE CARRIER - PROCEED WITH 518RTC INSTRUCTIONS AT THIS TIME**



- 1 Install Road Armor Logo with included #10 Stainless Button Head Bolts and Keps Nuts.
- 2 Install both 3x2 lights, as this is easier now than after Road Armor bumper has been installed.



- 3** **If equipped:** Insert 4 kit grommets into bumper holes followed by all sensors and harness. **\*\*Original sensor location\*\***
- 4** Install the Bolt Tabs through bumper using the included keeper washers. Use a 3/4" deep socket to push the washers over the threads.
- 5** Install both kit frame brackets to outside of frame as shown. Included kit nut plate goes inside of PSG frame. Re-use factory bolts and kit 1/2" bolts, washers and nut for PSG side.



- 6** Install new Road Armor bumper by starting a washer, lock washer and nut over each bolt. Once all nuts are finger tight, check fitment and tighten them all down. Check that all the bracket bolts are fully tight as well.
- 7** Install new Road Armor license plate relocation with kit 1/4" hardware provided followed by plate. (NOTE: Provisions will need to be taken to relocate license light.)

- 8** Reconnect bumper wiring harness and ensure all wiring is secured.

**FINISHED!**