



INSTALL INSTRUCTIONS

Jeep JK Front Mid-Width Bumper

**Products: 5072F0B(BASE), 5072F3B(SM-PRERUNNER) &
5072F5B(STINGER)**

Application : 2007-2018 Jeep Wrangler JK

I WARNING

Read the instructions completely before beginning installation. Before tightening bolts, drilling or cutting where required, check to make sure there are no obstructions such as brake, fuel or electrical lines which may be damaged. Also keep in mind this is an after-market product and MAY require minor shimming and/or trimming, reaming, etc. for proper fit. Road Armor is not responsible for any damages to vehicle.

ⓘ IMPORTANT NOTICE

- Be sure to inspect and test fit your product to ensure proper fitment before having it coated, painted, bed lined, etc.
- Road Armor will not be responsible for the cost of coating your unit if any problems with fit or finish are not noted and addressed beforehand.

SAFETY FIRST!

- FOLLOW ALL INSTRUCTIONS, YOUR SAFETY AND THE SAFETY OF OTHERS IS MOST IMPORTANT.
- WEAR APPROPRIATE EYE PROTECTION AND EXERCISE CAUTION WHEN DRILLING / CUTTING

REQUIRED TOOLS

Metric and SAE Socket Sets and Wrenches

Phillips Screwdriver & Cut-Off Wheel

Needle Nose Pliers, Small Pry Bar or Large Flathead Screwdriver

9/16 Drill Bit or Step Bit

INCLUDED HARDWARE & BRACKETS

(2) 1/2-in x 1-in Hex Head Bolts

(2) 1/2-in Nut Plate (Winch)

(4) 1/2-in x 1.5-in Hex Head Bolts

(6ft) Wire

(14) 1/2-in Grade 8 Nuts

(4) 20-Gauge Butt Connector

(14) 1/2-in Grade 8 Lock Washers

(1) JK Pump Bracket

(18) 1/2-in Large Grade 8 Washers

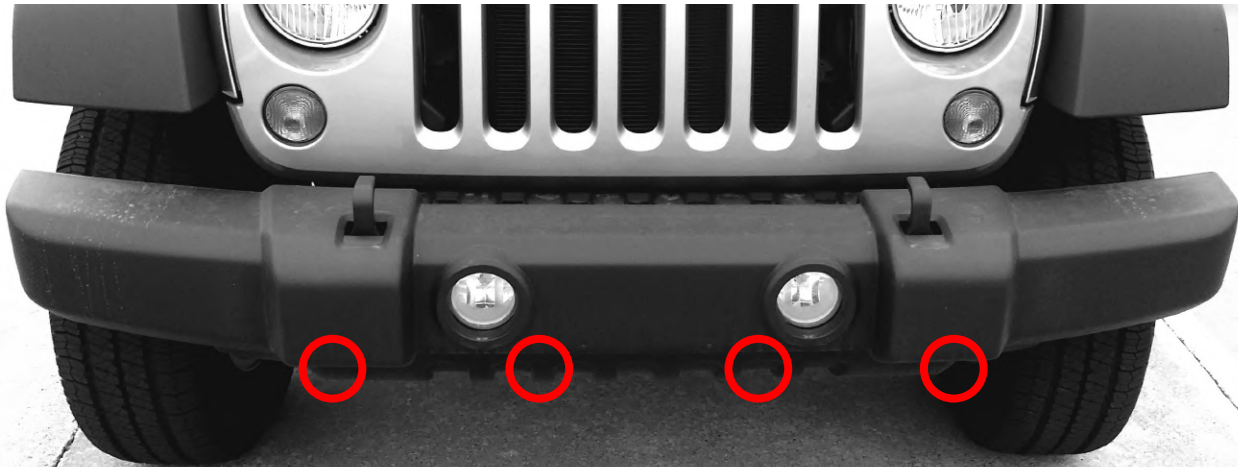
(1) JK Winch Plate

(8) 1/2-in x 1.5-in Hex Head Bolt Tabs

(8) 1/2-in Small Retainer Washers

(1) Stain Steel Road Armor Logo Letters





1 Unscrew the four (4) plastic screws in the center of the retainer clips securing the factory air dam to the bottom of the bumper using a phillips screw driver.

TIP If the screws just spin use a flathead screwdriver or small pry bar to pop them out.



2 There two (2) more of these plastic screw type retainers on the backside of the front cross member which must be removed in the same fashion.

3 If your JK is equipped with factory fog lights unplug them.

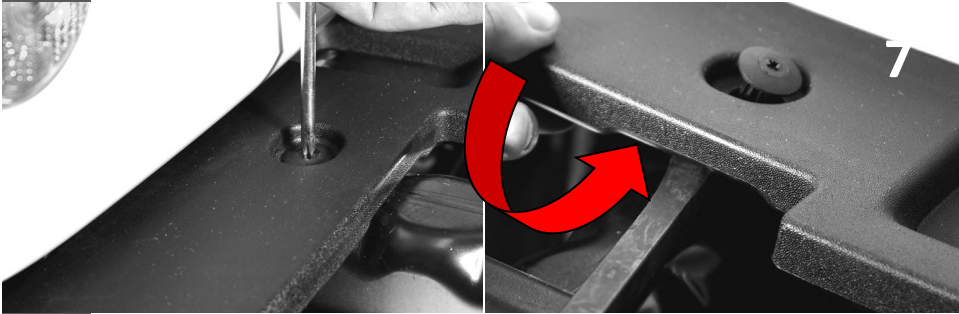
4 Using a pair of needle nose pliers, pry off all the clips holding the fog light harness loom to bumper.



5 Remove the nuts holding the factory bumper on, four (4) on each side using an 18mm socket and socket wrench. Keep the backing plate for installing Road Armor Bumper.

6 Pull off factory bumper and set aside. It is not heavy, about 25lbs.

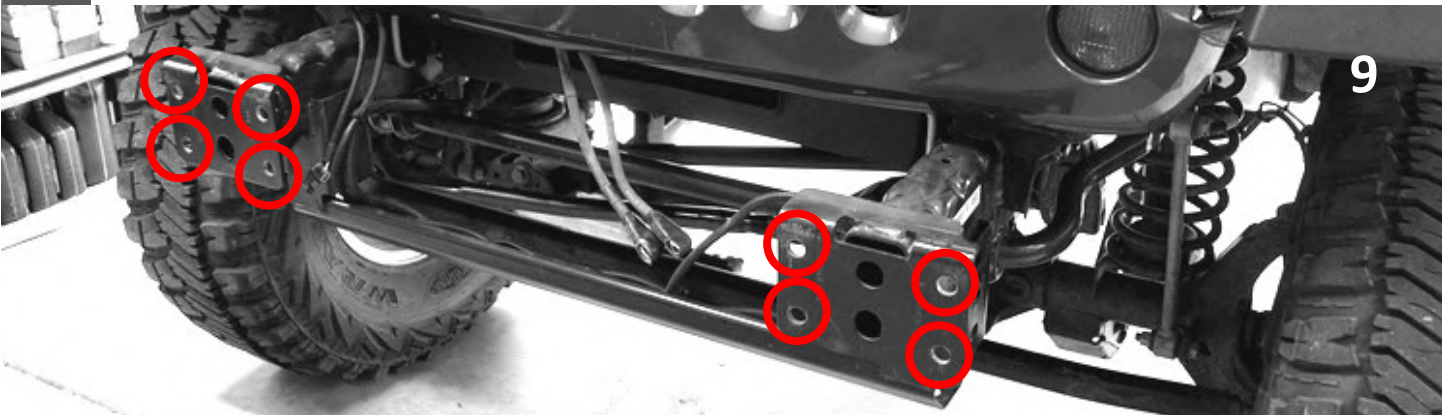
7 Now remove the plastic top plate using a phillips screwdriver as in Steps 1 and 2. Again if the screw simply spins, employ a flathead screwdriver or small pry bar as shown.



8 Gather a drill, a 9/16-in drill bit or a Step Bit for the next Step.

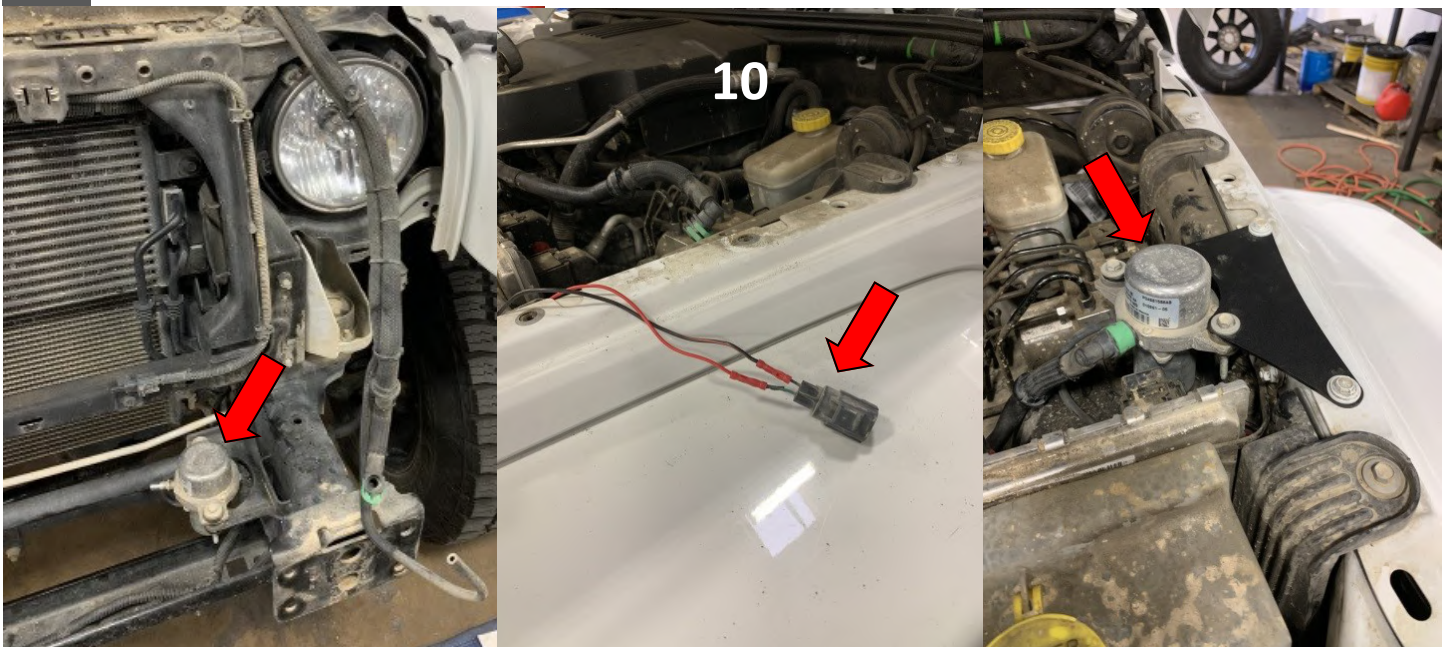


9 Drill out the holes on the frame as circled below to 9/16-in.



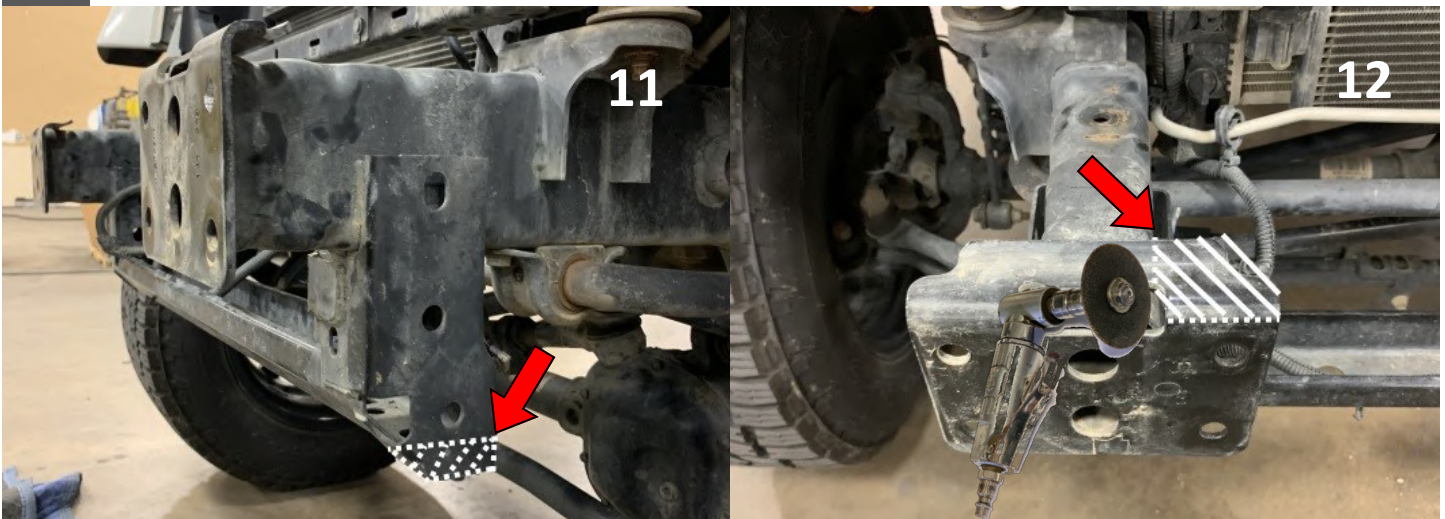
****2012-2018 Jeep Wrangler JK— Relocate AIR PUMP****

10 Remove air pump and bracket from frame. Extend wires & relocate pump using provided bracket.



11 **2012-2018 JK:** Cut and remove small sections of crash bar on both DVR & PSG side for bumper.

12 **2007-2018 JK:** Cut and remove small sections of frame horn on both DVR & PSG side for winch.

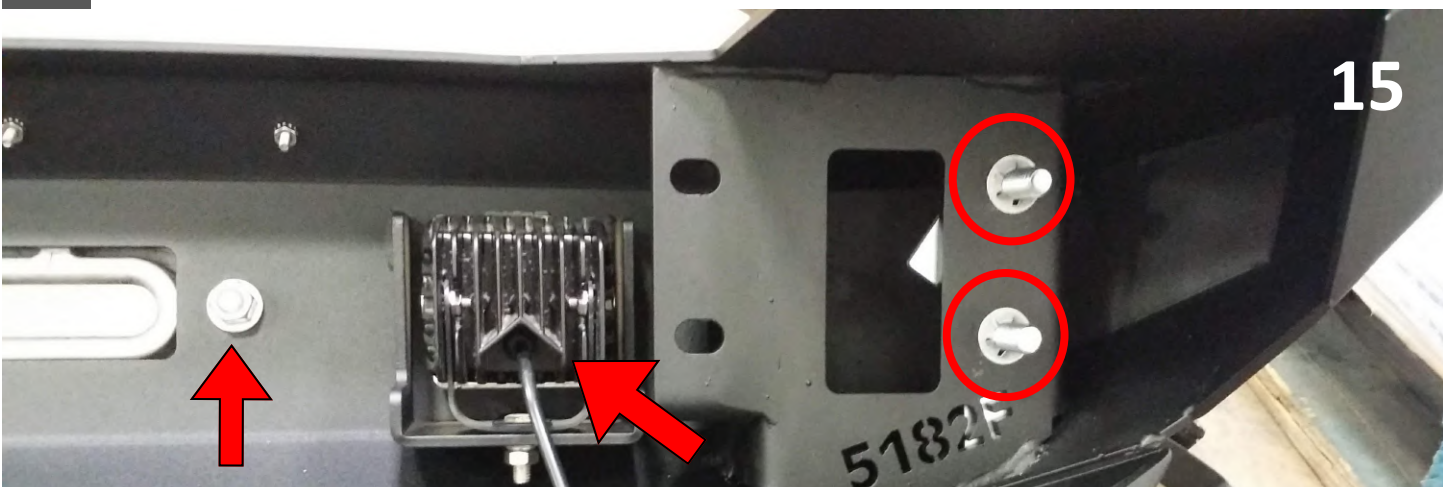


13 Install winch plate using 1/2" x 1" hardware & nut plates as shown below. (Install WINCH as well.)

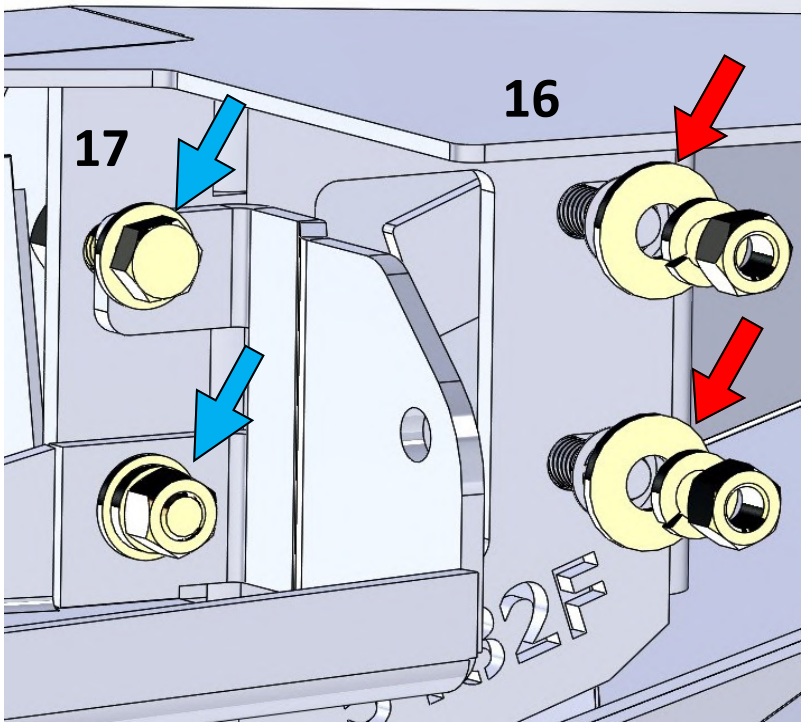


14 Install Road Armor Logo using the Stainless #10 Button Head Bolts and Keps Nuts.

15 Install both cube lights, fairlead and 2 - 1/2" bolt tabs on each outer slots of bumper using retainer washers to hole install bumper using large washers on the outside



- 16** Install bumper onto frame-horn lining up outside holes and each 1/2" bolt tabs through frame. Then place the factory outer stiffeners, which you were instructed to set aside in Step 5, followed by a washer (**Large**), lock-washer and nut on the backside finger tight. Repeat for Dvr. side.



- 17** Install two (2) 1/2" bolt, washer (**Small**), lock-washer and nut through bumper, inside-frame-horn and kit winch plate as shown above. Repeat for Dvr. Side (Use **small** washer for proper fit)
- 18** Once all the bolts are installed and bumper is adjusted properly; tighten all bolts at this time.
- 19** Install 4 - 1/2" bolt, washer, lock-washer and nut through lower bumper and crash bar.



- 20** If you have a winch to install, do that at this time. (Be sure all wires are secured.) **Finished!**