

ROAD ARMOR

RULE THE ROAD

WINCH



NON-WINCH



INSTALL INSTRUCTIONS

Stealth Front Bumper

Product : 408XXX

Application : 2011+ Dodge Ram 2500,3500

I WARNING

Read the instructions completely before beginning installation. Before tightening bolts, drilling or cutting where required, check to make sure there are no obstructions such as brake, fuel or electrical lines which may be damaged. Also keep in mind this is an after-market product and MAY require minor shimming and/or trimming, reaming, etc. for proper fit. Road Armor is not responsible for any damages to vehicle.

ⓘ IMPORTANT NOTICE

- Be sure to inspect and test fit your product to ensure proper fitment before having it coated, painted, bed lined, etc.
- Road Armor will not be responsible for the cost of coating your unit if any problems with fit or finish are not

SAFETY FIRST!

- FOLLOW ALL INSTRUCTIONS, YOUR SAFETY AND THE SAFETY OF OTHERS IS MOST IMPORTANT.
- WEAR APPROPRIATE EYE PROTECTION AND EXERCISE CAUTION WHEN DRILLING / CUTTING

REQUIRED TOOLS

SAE & METRIC Socket set and wrenches

Screw drivers, pry tool, pick tool, pliers

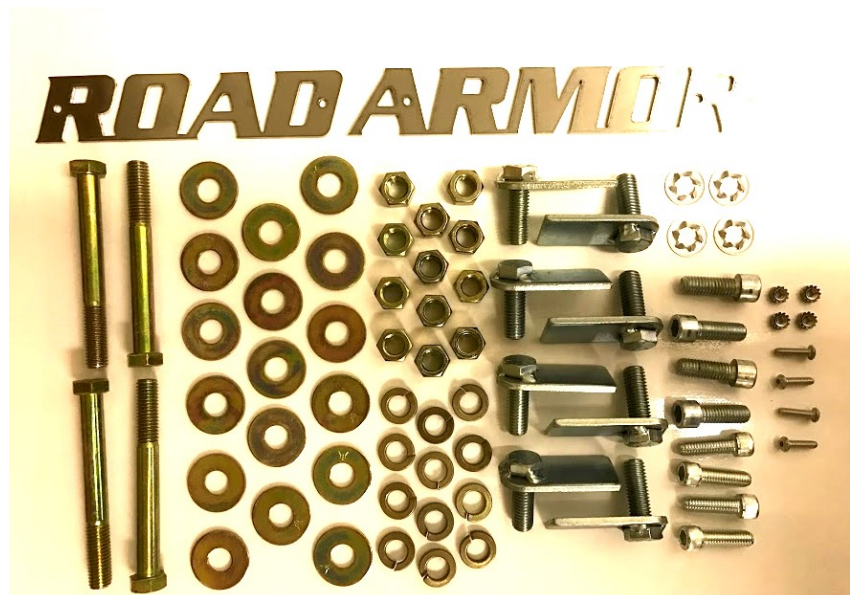
RECOMMENDED TOOLS

Adjustable Table Cart / Table/Pallet Lift or Hoist

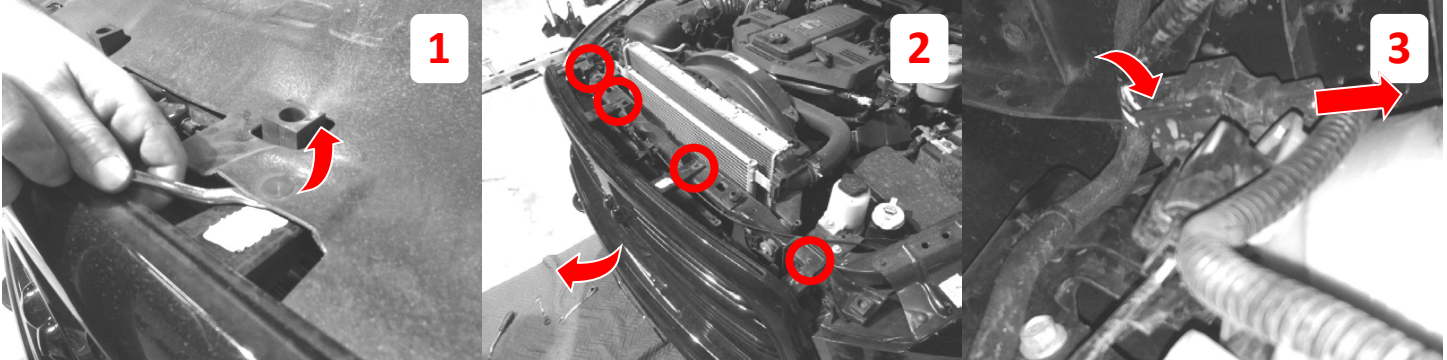
Impact driver

INCLUDED HARDWARE

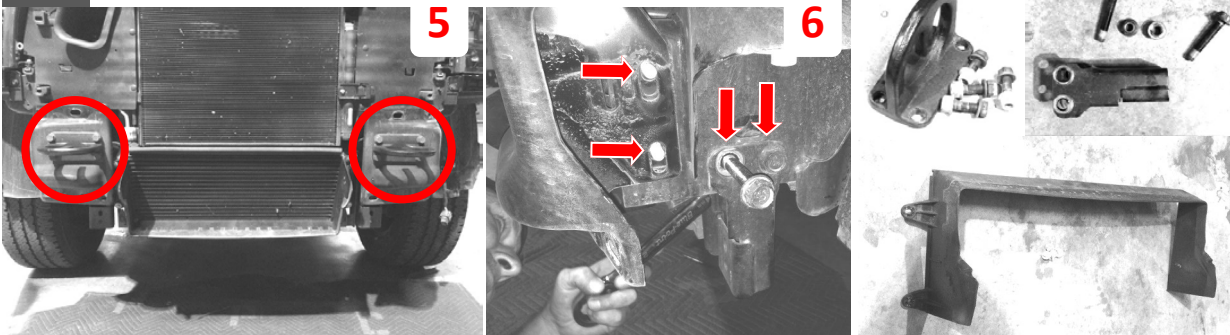
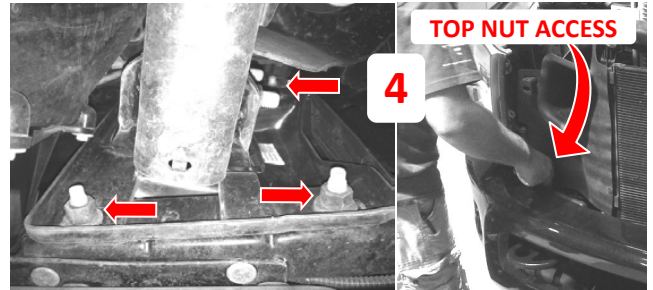
- 4 Retainer Washers / Clips
- 8 Single Bolt Plates
- 17 1/2" Flat Washers
- 12 1/2" Split Lock Washers
- 12 1/2"-13 Grade 8 Hex Nuts
- 1 Winch Bolt Kit
- 4 #10 Stainless Bolts and Nuts
- 4 1/2" - 4 1/2" Grade 8 Bolt
- 1 Stainless Steel Road Armor Logo
- 2 Brackets



- 1 Remove (4) plastic ribbed retainer clips from "heavy duty" dust shield
- 2 Remove (4) grill support bolts and remove grill pulling away sides and bottom
- 3 Disconnect bumper harness plug, located near driver side fog light



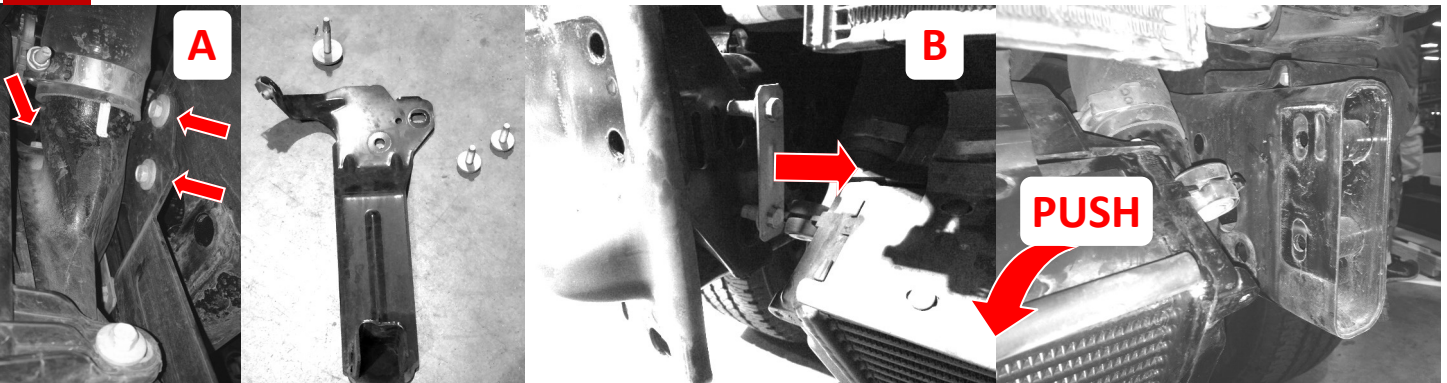
- 4 Remove (4) nuts from behind bumper each side located top and bottom of tow hooks. The top inside nut is accessed from the grill opening
- 5 Remove air dam over intercooler (if equipped) and factory tow hooks (set aside)
- 6 Remove OE bumper bracket and under-run guard and set aside hardware.



NOTICE
THE FOLLOW
APPLY ONLY
TO DIESEL
TRUCKS. SKIP
AHEAD NOW
IF YOU HAVE

DIESEL MODELS ONLY BELOW

- A Remove intercooler brackets both sides (3 bolts each) top bolt access from above
- B Once removed push the intercooler down and away to remove double nut plates one side at a time. The driver side is more difficult and requires patience and persistence. Then re-install intercooler supports.

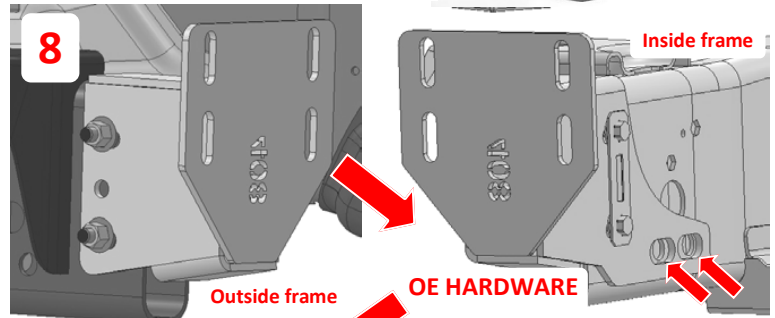


- 7 Reinstall intercooler air dam (if equipped)
- 8 Install Stealth brackets with long end on the inside of the frame re-using OE hardware. Now install included half inch hardware through the remaining slots. Do not fully tighten to allow for bumper adjustment.

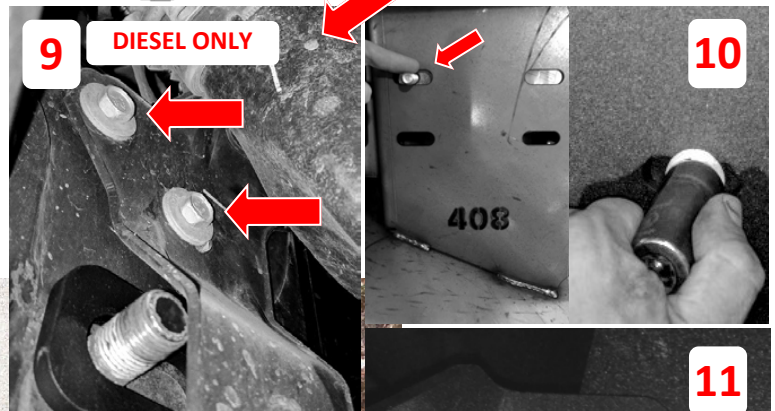


- 9 **DIESEL MODELS ONLY**
The stock intercooler interferes with bracket. This is alleviated by loosening the two bolts as shown to allow the Stealth bracket to slide between the intercooler bracket and frame. Don't forget to tighten this back down once finished.

- 10 Insert the Single Bolt Tab through outside top slot as indicated, then affix to the bumper side bracket using a retainer clip. Then do the same with the Single Bolt Tab on the opposite side. Do not worry about the unused inner slots, they are for a different vehicle application.



- 11 Fit up bumper to brackets aligning the retained bolts with bracket slots then add a washer, lock washer and nut to hold bumper into place.



- 12 Once centered and satisfied with fitment tighten everything down. Install Road Armor logo with hardware provided.



FINISHED

