



INSTALLATION INSTRUCTIONS

2014-2020 Toyota® Tundra® A-Pillar Mount



PRODUCT INCLUDES:
(2) RIGID A-Pillar Mounting Brackets
Mounting Hardware

***THIS MOUNT FITS THE FOLLOWING LIGHTS:**

(2) 4" 360-Series®, (2) D-Series PRO®, (2) D-SS PRO®,
(2) Radiance Pods®, (2) SR-M PRO®, or (2) SR-Q PRO®

IMPORTANT

THANK YOU FOR PURCHASING RIGID INDUSTRIES' PRODUCTS FOR YOUR VEHICLE.
Please read through all of these Instructions and tips before proceeding with the installation.
We do our best to provide a simple installation process for all applications however
a professional installation is always recommended.

**Always disconnect any power sources connected to your vehicle
before servicing fuses or electrical systems.**

STEP 1

Open the vehicle's hood and locate the hood hinges, remove top bolt from hinge using 12 mm socket. Driver side shown.

See Figures 1.1 & 1.2

FIGURE 1.1



STEP 2

Under the hood, attach the A-Pillar bracket to the vehicles top bolt loosely. Slightly loosen lower bolt to create a gap.

See Figures 2.1 & 2.2

FIGURE 2.1



FIGURE 2.2



STEP 3

Gently lower hood but do not latch. Position the light mounting bracket to allow installation of the carriage bolt, washer and nut. Use a 13mm wrench to tighten the nut to secure the light to the bracket.

See Figure 3

FIGURE 3



STEP 4

Open the hood, swing the bracket over and tighten bolts to 10 ft-lbs. Do not over tighten.

See Figures 4.1 & 4.2

FIGURE 4.1

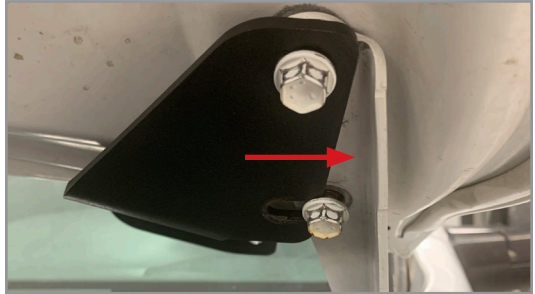


FIGURE 4.2



STEP 5

Aim lights to desired angle and repeat steps for passenger side.

See Figure 5

FIGURE 5





INSTALLATION INSTRUCTIONS

2021+ BRONCO SPORT A-PILLAR MOUNTS



PRODUCT INCLUDES:

(2) Mount #46709

* LIGHTS SOLD SEPARATELY

***THIS MOUNT FITS THE FOLLOWING LIGHTS:
4 Inch 360-Series, D-Series, Radiance Pod | Pair**

IMPORTANT

THANK YOU FOR PURCHASING RIGID INDUSTRIES' PRODUCTS FOR YOUR VEHICLE.

Please read through all of these Instructions and tips before proceeding with the installation. We do our best to provide a simple installation process for all applications however a professional installation is always recommended.

Always disconnect any power sources connected to your vehicle before servicing fuses or electrical systems.

RECOMMENDED TOOLS:

- 1/2" Socket With Ratchet
- 13mm Ratcheting Wrench

STEP 1

Assemble the light according to the instructions provided with the light. 4" 360 Series lights shown in Figure 1.

FIGURE 1



STEP 2

Open the hood to locate the hood hinges. (LH side hinge shown in Figure 2)

FIGURE 2



STEP 3

Protect the painted surfaces on the edge of the hood and fender.

FIGURE 3



STEP 4

Mark the edge of the hinge to realign the hood to the factory alignment after installation of mount. Tape is recommended. The factory hinge has a square hole for hood gap adjustment. Adjustment from factory will not always be in the center.

FIGURE 4.1

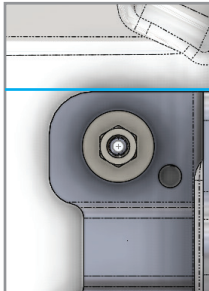
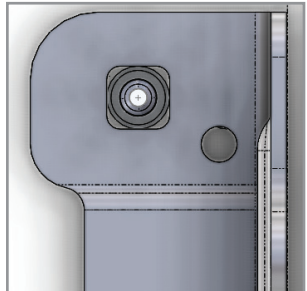


FIGURE 4.2



STEP 5

Remove the two nuts on the hood hinge using a 1/2" socket. Install the A-Pillar bracket and reinstall both nuts and tighten to 10 ft-lbs. Note that the mount has slots to allow for adjustment.

FIGURE 5.1

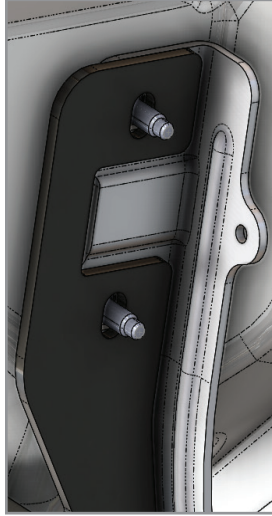
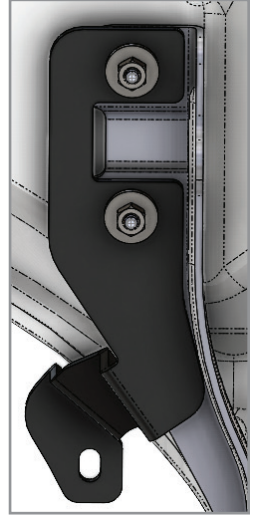


FIGURE 5.2



STEP 6

Ensure there is proper clearance between the hood and bracket.

FIGURE 6.1



FIGURE 6.2



STEP 7

With the mount installed, install the light using the supplied shorter carriage bolt, washer and nylock nut. Use a 13mm wrench to tighten the nut.

FIGURE 7

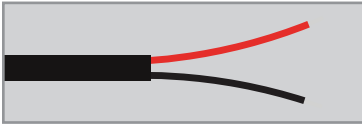


STEP 8

Make final adjustments as desired, repeat steps 3-7 to for the other side of the vehicle.

WIRING INSTRUCTIONS

Always disconnect the power.



RED WIRE = ON MODE VOLTAGE

BLACK WIRE = GROUND

1. Always disconnect the negative battery terminal when working with any electrical circuits.
2. If connecting to existing wiring, make sure to use appropriate fusing and wire gauge. Be sure to use heat shrink tubing on all connections to ensure a weather tight seal.
3. Be aware of the current rating of your selected switch, if switch rating is less than the amperage required to power your light then a relay must be added in line to prevent failure of switch.
4. Use wire sheathing to protect the wire if routing through any metal surface or around any sharp edges.
5. Re-connect the negative battery terminal and fully tighten all mounting hardware. Test to verify functionality.