



INSTALLATION INSTRUCTIONS

2010-2020 Toyota® 4Runner® A-Pillar Mount



PRODUCT INCLUDES:
(2) RIGID A-Pillar Mounting Brackets
Mounting Hardware

***THIS MOUNT FITS THE FOLLOWING LIGHTS:**

(2) 4" 360-Series®, (2) D-Series PRO®, (2) D-SS PRO®,
(2) Radiance Pods®, (2) SR-M PRO®, or (2) SR-Q PRO®

IMPORTANT

THANK YOU FOR PURCHASING RIGID INDUSTRIES' PRODUCTS FOR YOUR VEHICLE.
Please read through all of these Instructions and tips before proceeding with the installation.
We do our best to provide a simple installation process for all applications however
a professional installation is always recommended.

**Always disconnect any power sources connected to your vehicle
before servicing fuses or electrical systems.**

STEP 1

Open the vehicle's hood and locate the hood hinges, remove top bolt from hinge using 12 mm socket. Driver side shown.

See Figures 1.1 & 1.2

FIGURE 1.1



FIGURE 1.2



STEP 2

Under the hood, attach the A-Pillar bracket to the vehicles top bolt loosely. Slightly loosen lower bolt to create a gap.

See Figures 2.1 & 2.2

FIGURE 2.1



FIGURE 2.2



STEP 3

Gently lower hood but do not latch. Position the light mounting bracket to allow installation of the carriage bolt, washer and nut. Use a 13mm wrench to tighten the nut to secure the light to the bracket.

See Figure 3

FIGURE 3



STEP 4

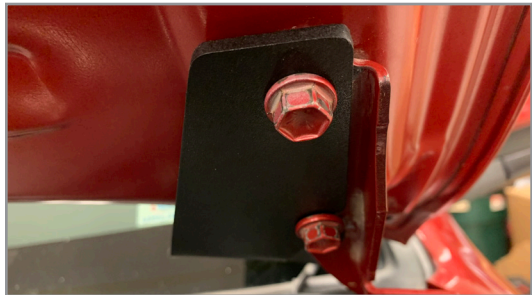
Open the hood, swing the bracket over and tighten bolts to 10 ft-lbs. Do not over tighten.

See Figures 4.1 & 4.2

FIGURE 4.1



FIGURE 4.2



STEP 5

Aim lights to desired angle and repeat steps for passenger side.

See Figure 5

FIGURE 5

