



## INSTALLATION INSTRUCTIONS

# 2010-2020 Toyota® 4Runner® A-Pillar Mount



PRODUCT INCLUDES:  
(2) RIGID A-Pillar Mounting Brackets  
Mounting Hardware

### **\*THIS MOUNT FITS THE FOLLOWING LIGHTS:**

(2) 4" 360-Series®, (2) D-Series PRO®, (2) D-SS PRO®,  
(2) Radiance Pods®, (2) SR-M PRO®, or (2) SR-Q PRO®

## **IMPORTANT**

**THANK YOU FOR PURCHASING RIGID INDUSTRIES' PRODUCTS FOR YOUR VEHICLE.**  
Please read through all of these Instructions and tips before proceeding with the installation.  
We do our best to provide a simple installation process for all applications however  
a professional installation is always recommended.

**Always disconnect any power sources connected to your vehicle  
before servicing fuses or electrical systems.**

## STEP 1

Open the vehicle's hood and locate the hood hinges, remove top bolt from hinge using 12 mm socket. Driver side shown.

See Figures 1.1 & 1.2

FIGURE 1.1



FIGURE 1.2



## STEP 2

Under the hood, attach the A-Pillar bracket to the vehicles top bolt loosely. Slightly loosen lower bolt to create a gap.

See Figures 2.1 & 2.2

FIGURE 2.1



FIGURE 2.2



### STEP 3

Gently lower hood but do not latch. Position the light mounting bracket to allow installation of the carriage bolt, washer and nut. Use a 13mm wrench to tighten the nut to secure the light to the bracket.

See Figure 3

FIGURE 3



### STEP 4

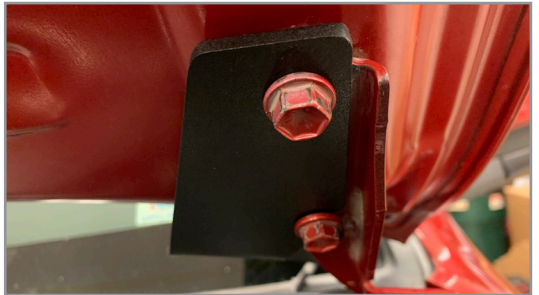
Open the hood, swing the bracket over and tighten bolts to 10 ft-lbs. Do not over tighten.

See Figures 4.1 & 4.2

FIGURE 4.1



FIGURE 4.2



### STEP 5

Aim lights to desired angle and repeat steps for passenger side.

See Figure 5

FIGURE 5

