



TOYOTA TACOMA

2016-2017 TOYOTA TACOMA®

**BUMPER MOUNT
INSTALLATION INSTRUCTIONS
FITS (1) 30" SR-SERIES® LIGHT**

*Light sold separately



KIT INCLUDES

(1) Bumper Mount #46565 & Necessary Mounting Hardware

IMPORTANT

Thank you for purchasing Rigid Industries® products for your Toyota Tacoma. Installation is fairly simple with the right tools and good mechanical abilities. If you are not confident in your mechanical skills, please seek the help of a professional to perform the installation. Please read through all

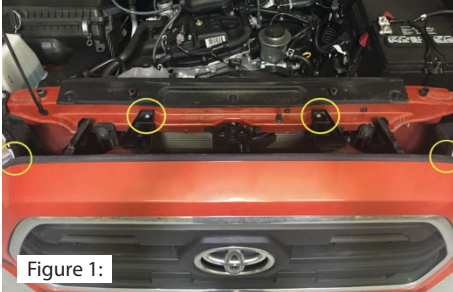
of these instructions and tips before proceeding with the installation.

It is strongly recommended that this product be installed by a professional.

Always disconnect any power sources connected to your vehicle before servicing fuses or electrical systems.

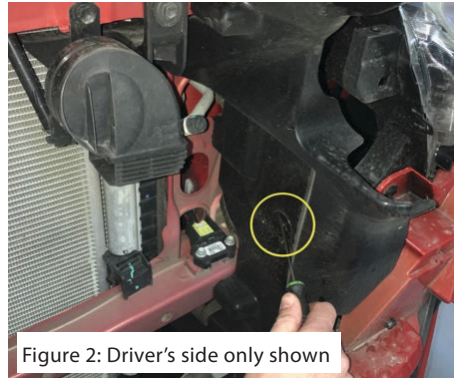
STEP 1

Remove and save (2) bolts and (2) push pins to remove grille. See Figure 1.



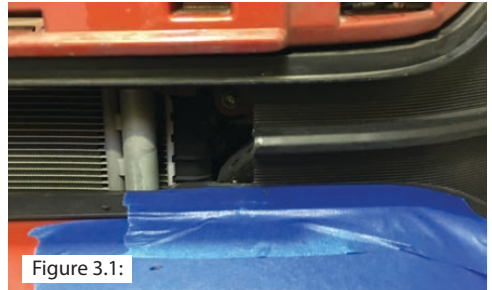
STEP 2

Remove and save (1) push pin on each plastic shield and remove plastic shields. See Figure 2.



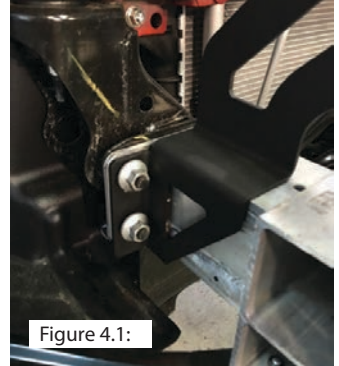
STEP 3

Measure 3/4" from opening of bumper cavity to plastic shroud for both driver and passenger sides, using a sharp blade or equivalent remove the 3/4" extra plastic. See Figure 3.



STEP 4

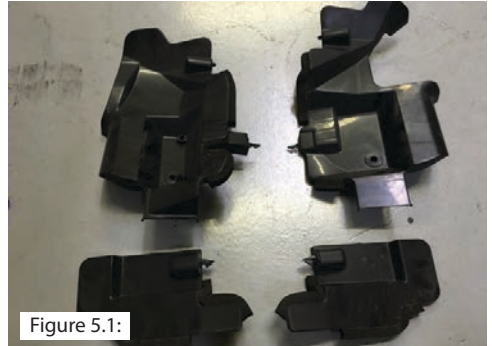
Remove (2) 14mm nuts on the driver and passenger side from the crash bar, install Rigid Industries bumper mounts, and re-install (2) 14mm nuts on each side. See Figure 4.



Note – Bumper removed for instructional photo only, not required

STEP 5

Cut plastic shields from Step 2 as shown to clear new Rigid Industries mount. See Figure 5.



STEP 6

Install Rigid Industries 30"SR-Series light bar using hardware provided with the light. See Figure 6.



STEP 7

Re-install plastic shields using Step 2 and grille from Step 1.

**Wire your light according to the instructions included with the light.
Take care to avoid any heat sources and sharp or abrasive surfaces.**



**Your installation is now complete.
Welcome to the Rigid Nation!**

Learn more about off-road lights on our website.