



INSTALLATION INSTRUCTIONS

360-SERIES JEEP OEM FOG LIGHT KIT



KIT INCLUDES

- (2) RIGID 360-Series SAE Lights
- (2) H16 Wiring Adapters
- Mounting Brackets

THIS KIT FITS THE FOLLOWING VEHICLES:

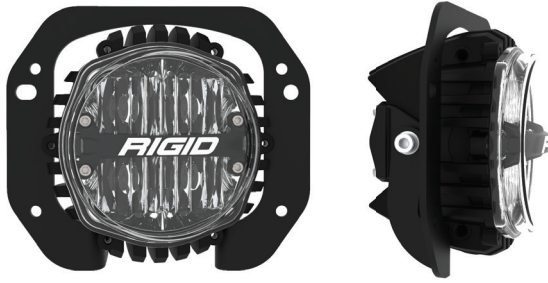
- 37106 & 37107 - '18-'20 JL and 19-20 JT Rubicon 1 Piece Bumper
37108 & 37109 - '18-'20 JL Sport and Sport S Bumper
37110 & 37111 - '18-'20 JL and '19-'20 JT Rubicon 3 Piece Steel Bumper

IMPORTANT

THANK YOU FOR PURCHASING RIGID INDUSTRIES' PRODUCTS FOR YOUR VEHICLE. Please read through all of these Instructions and tips before proceeding with the installation. We do our best to provide a simple installation process for all applications however a professional installation is always recommended.

Always disconnect any power sources connected to your vehicle before servicing fuses or electrical systems.

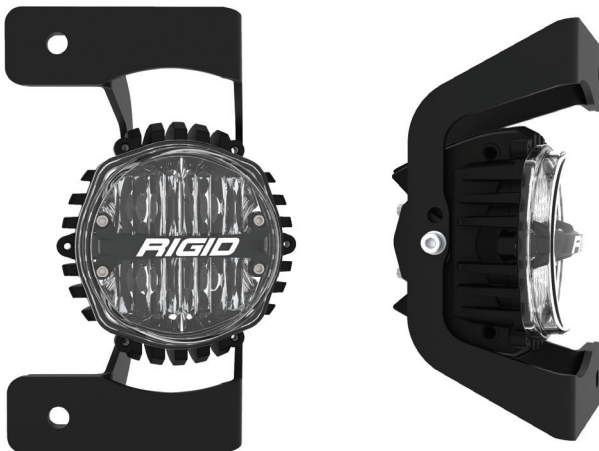
37106 & 37107
JL & JT Rubicon 1 Piece Bumper



37108 & 37109
JL Sport & Sport S Bumper



37110 & 37111
JL & JT Rubicon 3 Piece Steel Bumper

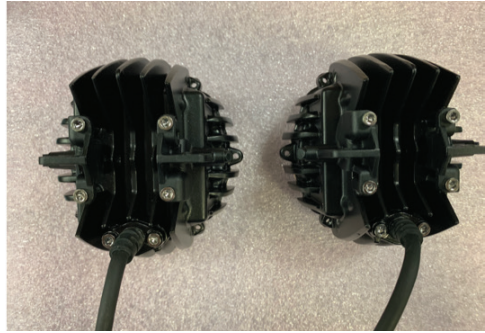


STEP 1

Take both lights and place lens side down on a no scratch surface. Place M8 screw into light housing (lock nut facing center of light). Snap the 4 fog light mounting bushings into place. Tighten the 8 socket head cap screws and snug the bushings into place.

See Figure 1

FIGURE 1



STEP 2

Install the light brackets onto the light. Figure 2 is JL Rubicon 3 Piece bracket.

See Figure 2

FIGURE 2



STEP 3

Once the brackets are assembled, snug the hardware to secure the bracket to the light

See Figure 3

FIGURE 3



STEP 4

Assemble the H16 plug. Use the provided heat shrink butt connectors to crimp on the H16 flying leads. (Red to Red and Black to Black) Then crimp the flying leads from the light into the opposite end of the butt connectors. Crimp the connectors then use a heat gun to shrink the tubing around the connectors.

See Figures 4.1, 4.2, & 4.3

FIGURE 4.1

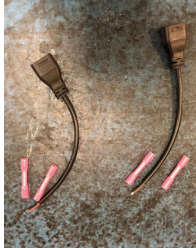
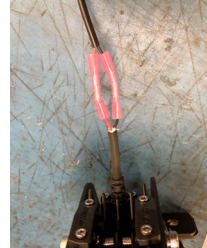


FIGURE 4.2



FIGURE 4.3



STEP 5

Gain access to the fog cavity. Unplug the factory wiring harness from the back of the factory fog light. Remove the factory hardware. Reuse the factory hardware to install the new kit that holds the factory fog light in its cavity. Insert the RIGID 360-Series light in the factory housing and use the factory hardware to screw the brackets into place. Plug the SAE Fog Light into the factory harness. Aim the fog lights prior to reattaching the access point (Follow your local fog light position laws). Once aimed tighten the hardware securing the bracket to the light (32 in/lbs). Reattach the access points.

See Figures 5.1, 5.2, 5.3, & 5.4

FIGURE 5.1



FIGURE 5.2



FIGURE 5.3



FIGURE 5.4



**Your installation is now complete.
Welcome to the Rigid Nation!**

Learn more about off-road lights we have.