



**Foam Block SUP Carrier**

**100K20**

The correct attachment of this product is critical and beyond the control of Rightline Gear. The safe use and long life of this product depends entirely on your good judgment and following these directions.

**Prepare The Vehicle**

1-Clean the vehicle's roof of all dirt and debris.

2-If your vehicle has an antenna in the center of its roof, temporarily remove it (Fig 1).

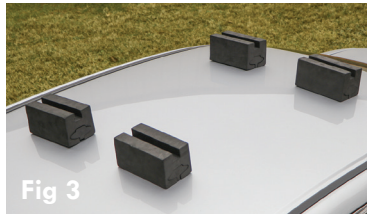


**Place The Foam Blocks**

**Vehicles WITH Cross Bars** – Remove the roof rack cutouts from the (4) Foam Blocks and push the blocks over the cross bars, (2) blocks per cross bar (Fig 2).



**Vehicles WITHOUT Cross Bars** – Keep the roof rack cutouts in the (4) Foam Blocks and place the blocks on the vehicle's roof. Line up each set of Foam Blocks with each set of vehicle doors (Fig 3).



**NOTE: IF A 4-DOOR VEHICLE, (1) SET OF FOAM BLOCKS WILL LINE UP WITH THE FRONT DOORS AND (1) SET OF FOAM BLOCKS WILL LINE UP WITH THE REAR DOORS. IF A 2-DOOR VEHICLE, BOTH SETS OF FOAM BLOCKS WILL LINE UP WITH THE FRONT DOORS.**

**Attach The Dual Lock Straps**

1-Identify the short strap piece and long strap piece that make up each of the (2) Dual Lock Straps (Fig 4).



**Fig 4**

2-Choose the attachment points for your vehicle, and attach the short and long strap piece of each of the Dual Lock Straps.

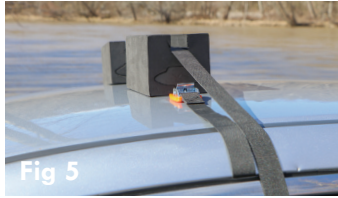




## Secure The Foam Blocks To The Vehicle

1-Run the long strap piece through the slot in the top of the front (2) Foam Blocks to the opposite side of the vehicle (Fig 5).

2-Thread the end of the long strap piece through the cam buckle on the short strap piece and tighten (Fig 6).



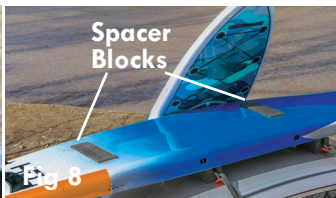
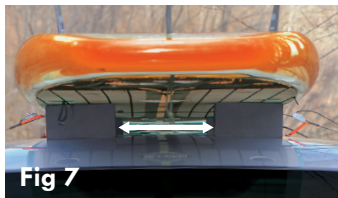
3-Repeat steps 1 – 2 for the rear (2) Foam Blocks.

## Secure The SUP To The Foam Blocks

1-Place the SUP upside down on top of the (4) Foam Blocks with the rear fins facing towards the front of the vehicle. Make sure the SUP is centered over the (4) Foam Blocks.

2-Adjust the Foam Blocks to the width of the SUP (Fig 7).

3-Use the optional Foam Spacer Blocks to place another SUP on top of the first (Fig 8).



4-Run one of the long strap pieces over the SUP(s) to the opposite side of the vehicle (Fig 9).

5-Thread the end of the long strap piece through the cam buckle on the long strap piece and tighten (Fig 10).



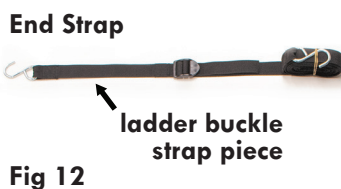
6-Tie off the strap end so it doesn't flap in the wind (Fig 11).

7-Repeat steps 4 – 6 for the second set of (2) Foam Blocks.



## Attach The End Strap

1-Identify the ladder buckle strap piece of the End Strap (Fig 12).



2-Attach the hook of the ladder buckle strap piece to an attachment point on the fin side of the SUP (Fig 13).



3-Extend the end strap down to the center of the front of the vehicle.

4-Attach its hook to an attachment point at the bumper or frame behind the bumper (Fig 14).



5-Tighten the end strap and tie off the excess so it doesn't flap in the wind. (Fig 15).



6-Check all straps before driving. Make sure to re-tighten the straps after a few miles and check them regularly throughout the trip.

**WARNING: THE (1) END STRAP SHOULD BE USED AT ALL TIMES WHILE TRANSPORTING YOUR SUP. FAILURE TO USE MAY RESULT IN DAMAGE TO THE SUP AND/OR VEHICLE. IF THE SUP DOES NOT HAVE AN ATTACHMENT POINT FOR THE END STRAP IT MAY NOT BE POSSIBLE TO TRAVEL AT HIGHWAY SPEEDS.**

**NOTE: IF A STRAP MAKES NOISE WHILE DRIVING, LOOSEN THE STRAP, RE-POSITION IT SLIGHTLY, AND RE-TIGHTEN IT. IF A STRAP CONTINUES TO MAKE NOISE, LOOSEN THE STRAP(S), PUT A TWIST IN THE STRAP(S), AND RE-ATTACH ACCORDING TO THE INSTRUCTIONS OUTLINED ABOVE.**

## Re-Connect The Car Clips To The Dual Lock Straps

1-Run a strap's loop through the backside of a Car Clip (Fig 16).

2-Thread the strap's end through its loop (Fig 17).

3-Pull the strap's end to tighten the strap around the Car Clip (Fig 18).

4-Repeat steps 1-3 for the other (3) Dual Lock Strap pieces.

