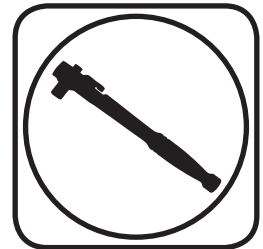
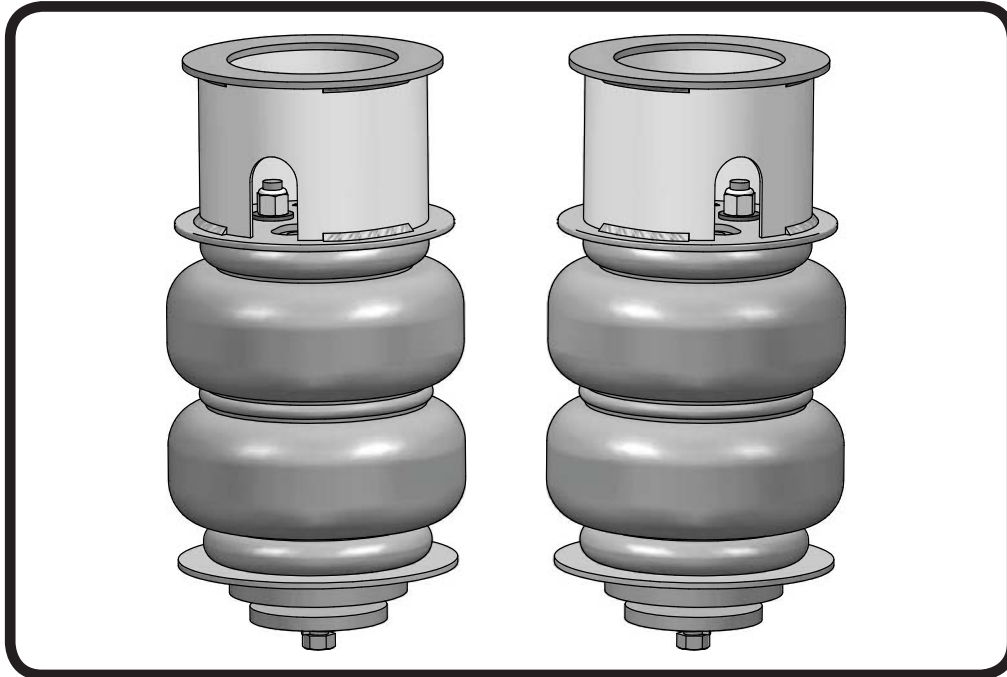




**Part # 12274099 - 2015 up Mustang Rear CoolRide**

Recommended Tools



**2015 up Mustang Rear CoolRide**

# Installation Instructions

### Table of contents

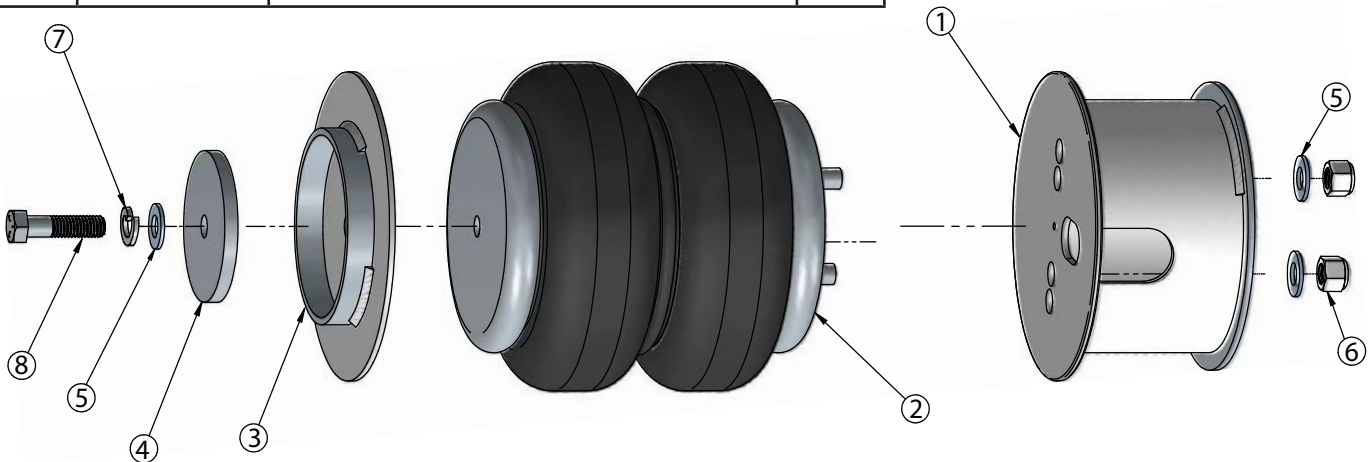
- Page 2..... Included components & Getting Started
- Page 3..... CoolRide Installation
- Page 4..... CoolRide Installation

THIS KIT IS DESIGNED TO BE USED WITH RIDETECH HQ SERIES SHOCKS KIT # 12270701.



### Major Components .....In the box

Item	Part #	Description	QTY
1	90002484	Upper Cup Bracket	2
2	90006781	6.5" Diameter Air Spring	2
3	90002485	Lower Cup Bracket	2
4	90002486	Lower Clamping Plate	2
5	99373003	3/8" Flat Washer	6
6	99372002	3/8"-16 Nylok Nut	4
7	99373005	3/8" Split Lock Washer	2
8	99371006	3/8"-16 x 1 1/2" Hex Bolt	2



### Getting Started and Disassembly

Congratulations on your purchase of the Ridetech Mustang CoolRide System. This system has been designed to give your Mustang excellent handling along with a lifetime of enjoyment. The CoolRide System provides flexibility that can not be achieved with Conventional Coil Springs. The CoolRide System, used in conjunction with HQ Series rear shocks, will give you the flexibility of adjusting your ride height along with the ability to dial in your ride quality to your personal preference.

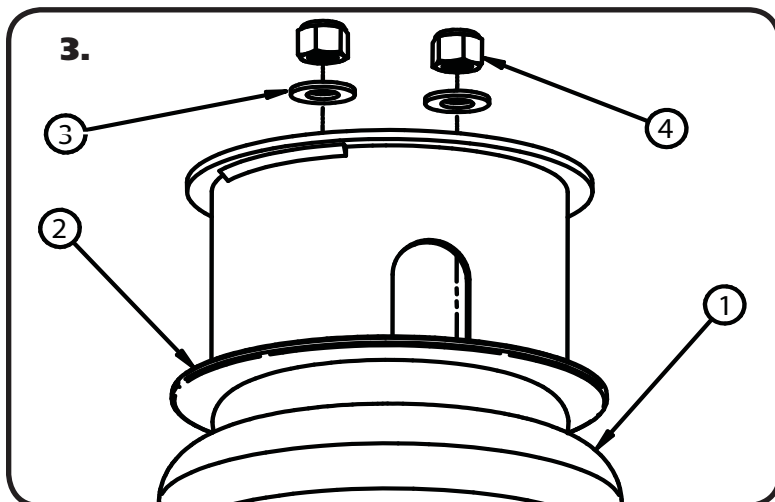
**This CoolRide System is Designed to replace the factory Coil Springs. It should be installed at the same time as the rear shocks, kit # 12270701**

**Refer to the Factory Service Manual for disassembly and Coilspring removal instructions.**

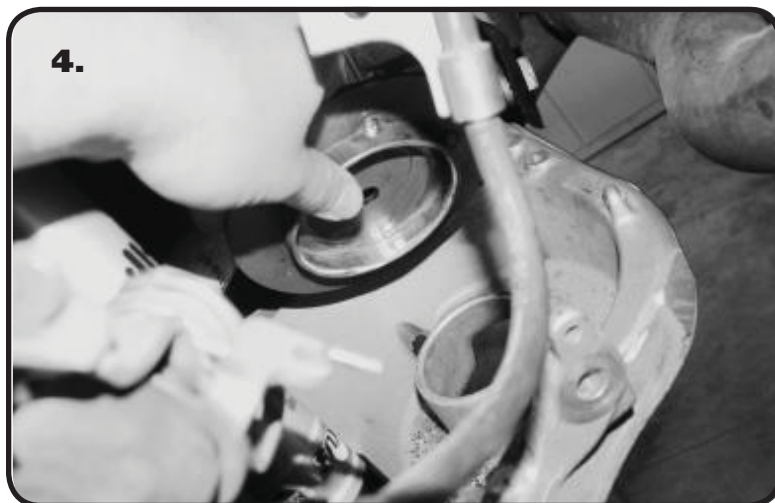
1. Remove the Shocks and the OEM Upper Shock Mount from the Car.
2. Disconnect the Sway Bar Linkage from the Control Arms. These will be reinstalled.



### CoolRide Installation



**3.** Thread a 90 Degree Fitting into the Air Spring with Thread Sealant applied to the threads. Place the Upper Cup Bracket(2) on to the top of the Air Spring(1). Next, install a 3/8" Flat Washer(3) on each threaded stud, followed by a 3/8"-16" Nylok Nut(4). Torque Nuts to 15-20ftlbs.



**4.** Install the Lower Cup Bracket into the OEM coil spring pocket of the control arm. The Cup Bracket is installed with the bottom ring located around the coil spring centering ring on the control arm.

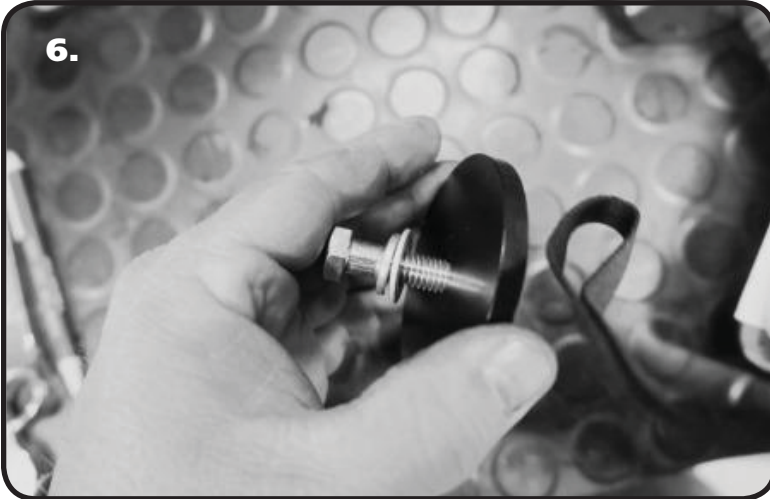


**5.** Install the Air Spring/Upper Cup Assembly into the OEM coil spring location. The top of the Upper Cup will sit in the OEM coil spring location. Clock the fitting to the front of the car, but be sure you have access to it to install the air line. The bottom of the Air Spring will sit on top of the Lower Cup Bracket.



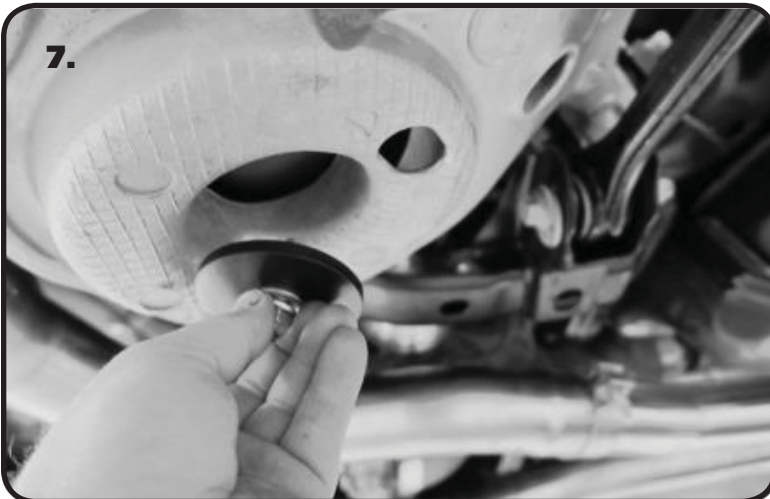
### CoolRide Installation

6.



6. Install a 3/8" Split Lock Washer, followed by a 3/8" Flat Washer, on the 3/8"-16 x 1 1/2" Hex Bolt. Insert the Bolt into the hole in the Clamping Plate.

7.



7. Move the Air Spring around until the threaded hole lines up with the holes in the Lower Cup Bracket. Insert the Clamping Plate into the coil spring centering ring hole in the bottom of the lower control arm, threading the 3/8"-16 Hex Bolt into the bottom of the Air Spring. Hold the Air Spring to keep the fitting hole in the correct location and Torque the 3/8" Hex Bolt to 15-20 ftlbs.

8. Install your HQ Series Shocks and Air Control System before putting the car back on the ground.

### Ride Height

We have designed most cars to have a ride height of about 1 1/2" lower than factory. It will take approximately 80psi to achieve ride height. The air pressure will vary due to driver preference and accessories installed in the vehicle.