



ARR20500 [Rear airspring, bracket, shock system](#) for 61 to 66 T-Bird

- 2 F9000 rear airspring
- 2 A070 leaf spring bracket
- 2 A079x pattern plate
- 2 A034b underframe upper bracket
- 2 MON33033 shock with 2 sleeves
- 4 A035 shock bracket
- 2 DAY2060 short bumpstops

Fastener package =

- 6 3/8 x 3/4 uss bolts for air springs
- 8 3/8 x 1 1/4 uss bolt for upper bracket
- 8 3/8 nyloc nuts
- 4 1/2 x 2 1/2 uss bolt
- 4 1/2 uss nyloc nuts
- 6 3/8 lock washers
- 12 3/8 sae flat washers

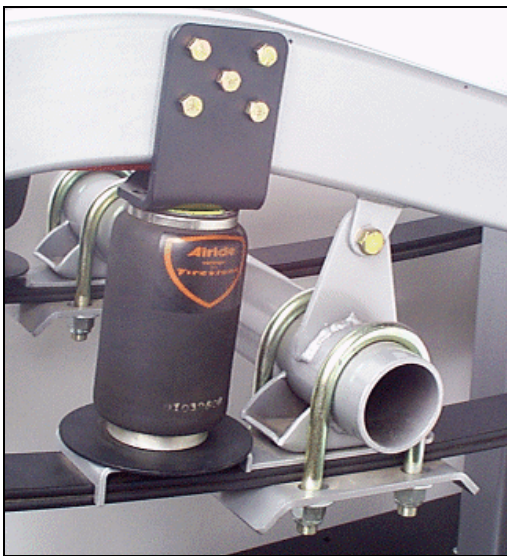
INSTRUCTIONS



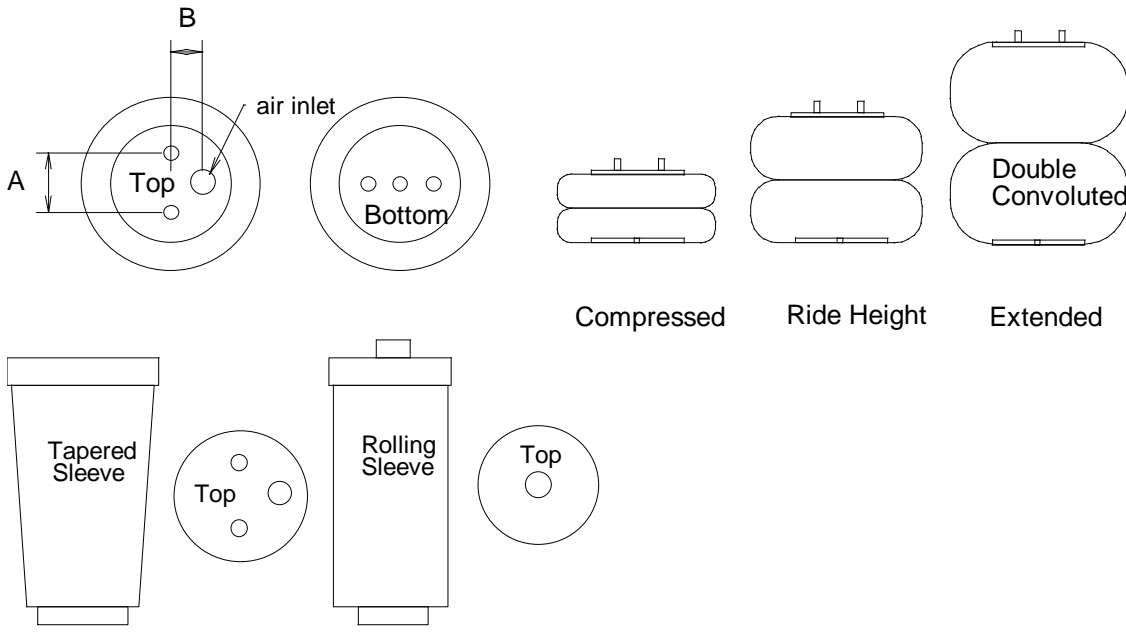
REAR INSTALLATION

SUPPLEMENT FOR MOUNTING AIRSPRING ON TOP OF LEAFSPRING

1. This installation is performed with the vehicle at ride height. When you raise the vehicle to a comfortable working height, support it by the axle housing.
2. Attach the lower airspring bracket to the top of the leafspring, preferably behind the rearend, using the attachment hardware provided **NOTE:** On some vehicles, a softer ride is obtained by removing leafs from the spring pack. Be sure to leave at least 2 leafs in the spring pack for stability.
3. Attach the airspring to the lower bracket.
4. The upper bracket can now be attached to the airspring and its placement on the framerail can be determined. The upper bracket will be "J" shaped. Attach it to the airspring and determine its placement on the framerail. [Refer to the airspring dimension chart.] Note that the proper inflated dimensions will not be the same as the uninflated dimensions.
5. Clamp in place to weld. Bolting into the unibody structure is normally not sufficient. [Remove airspring before welding to avoid weld splatter damage!]
6. Reassemble, inflate, and re-inspect for proper clearance. **REMEMBER: THE AIRSPRING BELLOWS MUST NOT TOUCH ANYTHING AT ANYTIME!! IT IS THE FINAL RESPONSIBILITY OF THE INSTALLER TO DETERMINE ADEQUATE CLEARANCE.**



Typical leafspring/underframe installation



AIRSPRING DIMENSION CHART

PART#	TYPE	Capacity @100psi	Compressed Height	Ride Height	Max. Height	Max Diameter	Bolt Pattern
255C [F6957]	Double Convoluted	2040#	3"	5"-6"	7"	6.5"	A=1.75 B=.875
224C [F0335]	Double Convoluted	3150#	3"	5"-6"	8"	8.0"	A=2.75 B=1.312
26C [F7325]	Double Convoluted	3400#	3"	5"-6"	10"	8.5"	A=2.75 B=1.312
20 [F6908]	Double Convoluted	4790#	3"	7"-8"	11"	9.9"	A=3.50 B=1.75
F9000	Tapered Sleeve	1500#	4.5	9"-9.5"	13"	5"	A=2.75 B=1.312
F9002	Tapered Sleeve	1500#	4.5	8"-8.5"	12"	5"	A=2.75 B=1.312
F9003	Tapered Sleeve	1500#	4.5	7"-7.5"	11"	5"	A=2.75 B=1.312
F9010	Tapered Sleeve	2000#	6.5"	10.5"-11.5"	16"	6.5"	.750 SAE/.250npt
7012	Rolling Sleeve	1020#	4"	7.5"-8.5"	13"	5"	.750SAE/.125npt
7076	Rolling Sleeve	800#	2.25"	5"-6"	9"	4"	.750SAE/.125npt