



**ARR21450 [Rear airspring, bracket, shock kit](#) for 91-96 GM B body Station Wagon**

- 2 F6781 rear airspring
- 2 A068 rear upper bracket
- 2 A080 rear lower bracket
- 2 A168 upper washer
- 2 MON33082 rear shock

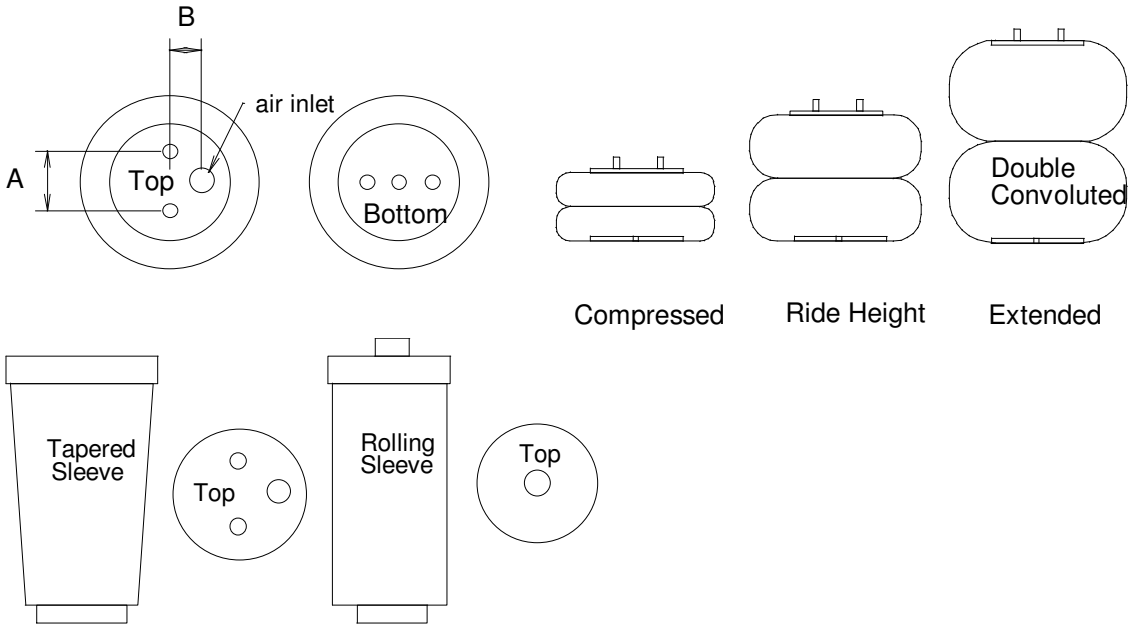
- Fastener package =
- 4 3/8 uss nyloc nut
  - 2 7/16 x 2 stud
  - 2 7/16 flat washer
  - 2 7/16 nyloc
  - 2 3/8 x 3/4 uss bolt
  - 6 3/8 sae washers
  - 6 3/8 lock washers

**INSTRUCTIONS**

## ***SUPPLEMENT FOR GM COILSPRING REAR SUSPENSION***

1. Jack up rear of vehicle and support with jackstand under the frame.
2. Remove lower shock absorber bolts. Doing this one side at a time prevents chasing the axle around under the car.
3. By pushing rearend down slightly, you should be able to remove the coilsprings.
4. Assemble the upper bracket and lower brackets onto the airspring. The upper bracket will have a slot for airline access. When installing the fitting, be sure it is pointed towards this slot.
5. The supplied center stud should be inserted into the nut that is welded to the inside of the upper bracket. This will attach the upper bracket to the upper coil spring cup. It may be trimmed to correct length.
6. Insert the stud through the existing hole in the coil spring pocket. Tighten the nut on the center stud to 15 -20 ft/lb. The lower bracket will set on the old coil spring mount with no other attachment.
7. Re-attach the shock absorbers and route the airlines.

## DIMENSION CHART



## AIRSPRING DIMENSION CHART

PART#	TYPE	Capacity @100psi	Compressed Height	Ride Height	Max. Height	Max Diameter	Bolt Pattern
255C [F6957]	Double Convoluted	2040#	3"	5"-6"	7"	6.5"	A=1.75 B=.875
224C [F0335]	Double Convoluted	3150#	3"	5"-6"	8"	8.0"	A=2.75 B=1.312
26C [F7325]	Double Convoluted	3400#	3"	5"-6"	10"	8.5"	A=2.75 B=1.312
20 [F6908]	Double Convoluted	4790#	3"	7"-8"	11"	9.9"	A=3.50 B=1.75
F2107	Rolling Sleeve	4000#	6"	9" - 12"	16"	9"	A=3.50 B=1.75
F9000	Tapered Sleeve	1500#	4.5	8-9"	13"	5"	A=2.75 B=1.312
F9002	Tapered Sleeve	1500#	4.5	7-7.5"	12"	5"	A=2.75 B=1.312
F9003	Tapered Sleeve	1500#	4.5	6.5-7"	11"	5"	A=2.75 B=1.312
F9010	Tapered Sleeve	2000#	6.5"	10.5"-11.5"	16"	6.5"	.750 SAE/.250npt
7012	Rolling Sleeve	1020#	4"	7.5"-8.5"	13"	5"	.750SAE/.125npt
7076	Rolling Sleeve	800#	3.5"	5"-6"	9"	4"	.750SAE/.125npt

**CAUTION!!! EXCEEDING THESE DIMENSIONS MAY RESULT IN SUDDEN AIRSPRING FAILURE! PROPER CLEARANCES MUST BE MAINTAINED AT ALL RIDE HEIGHTS AND STEERING ANGLES. BUMPSTOPS MUST BE USED TO LIMIT SUSPENSION TRAVEL BEFORE THESE DIMENSIONS ARE EXCEEDED.**