



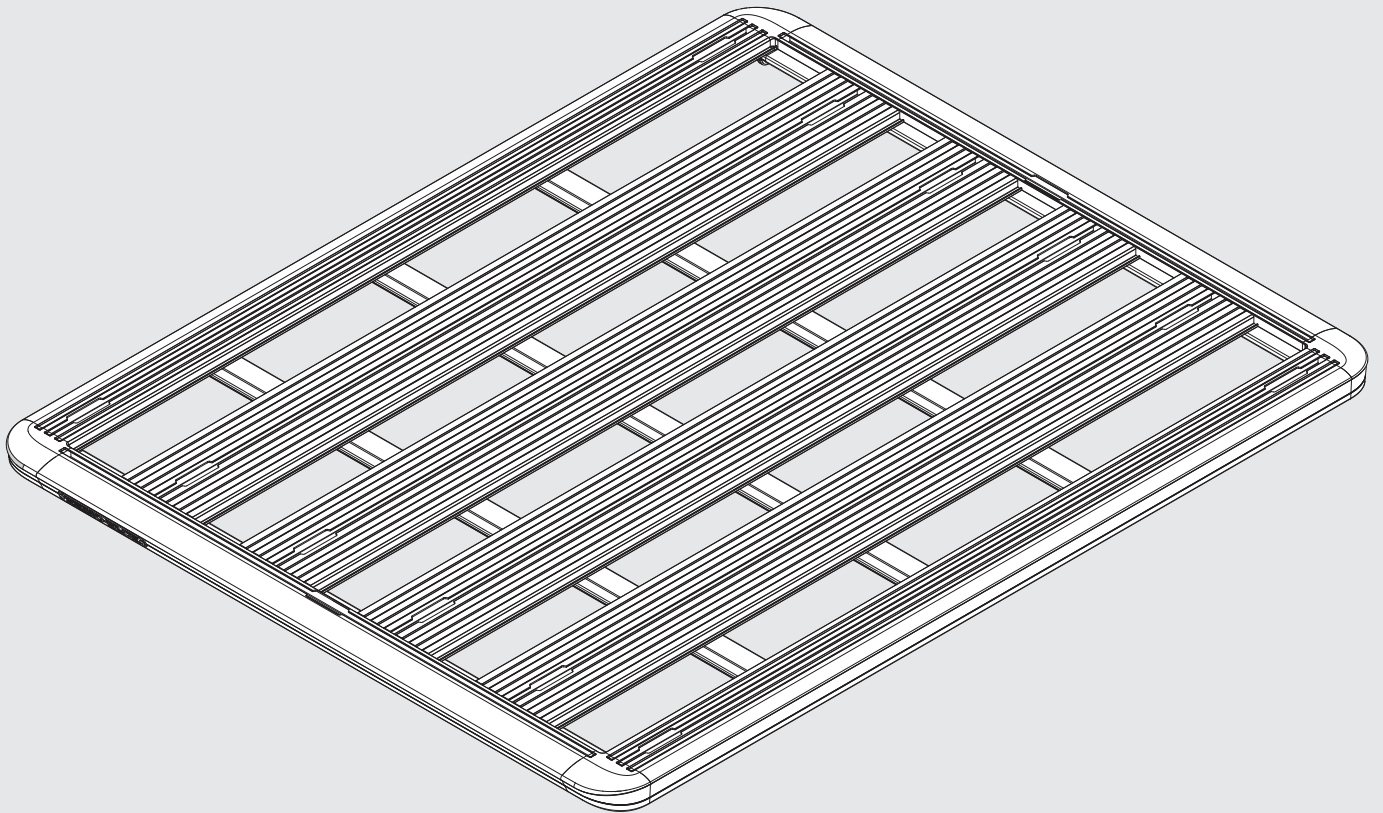
RHINO-RACK®

PIONEER ALLOY TRAY (flat pack)

Important:

1. Check the Rhino-Rack website to ensure you have the latest issue of these instructions.
2. Please refer to your fitting instruction to ensure that the roof racks are installed in the correct locations.
3. Check the contents of kit before commencing fitment and report any discrepancies.
4. Place these instructions in the vehicle's glove box after installation is complete.
5. These instructions must be followed for warranty to be upheld.

Fit Time: 1 hour



Instructions - Instrucciones

Carrying Capacity

Max system load capacity (incl. system weight), refer to Pioneer fit sheet.

Check your vehicle owners hand book for vehicle maximum carrying capacity. Please ensure you use the vehicle manufacturers maximum roof allowance if it is lower than the figure listed in this instruction.

Load must be evenly distributed over the system.

Off Road: Any driven path taken that does not contain a surface protection layer (tar/bitumen).

Vehicle Load Limit: Total permissible weight attached to the roof of the car. This is inclusive of the weight of the roof rack system.

System Load Limit: Total permissible weight allowed on top, and attached to roof racks whilst the vehicle is in motion.

Torque Settings

Unless stated otherwise in these instructions, all fasteners should be set to the following torque settings - M6: 4-5Nm (3-4lbs/ft), M8: 8-10Nm (6-7.5lbs/ft) and M10: 16-18Nm (12-13lbs/ft).

Warning

- Check part number or kit is correct for use with your vehicle.
- Do not attempt to fit the rack system to your vehicle unless you fully understand these fitting instructions. Please direct any questions regarding fitting to the dealer from where the roof racks were purchased.
- Although the system is tested and approved to AS1235-2000 / ISO 11154, off-road conditions can be much more rigorous. Extreme care must be taken in off road conditions.
- Roof racks must be removed when vehicle is put through an automatic car wash.
- With utility vehicles, the cabin and the canopy move independently. Roofracks and vehicle can be damaged if the item transported is rigidly fixed at points on both the cabin and canopy. Instead, rigidly fix to either the cabin roof racks or the canopy roof racks.
- Always ensure you fasten your load securely.
- Use only non-stretch fastening ropes or straps to attach cargo to your load.

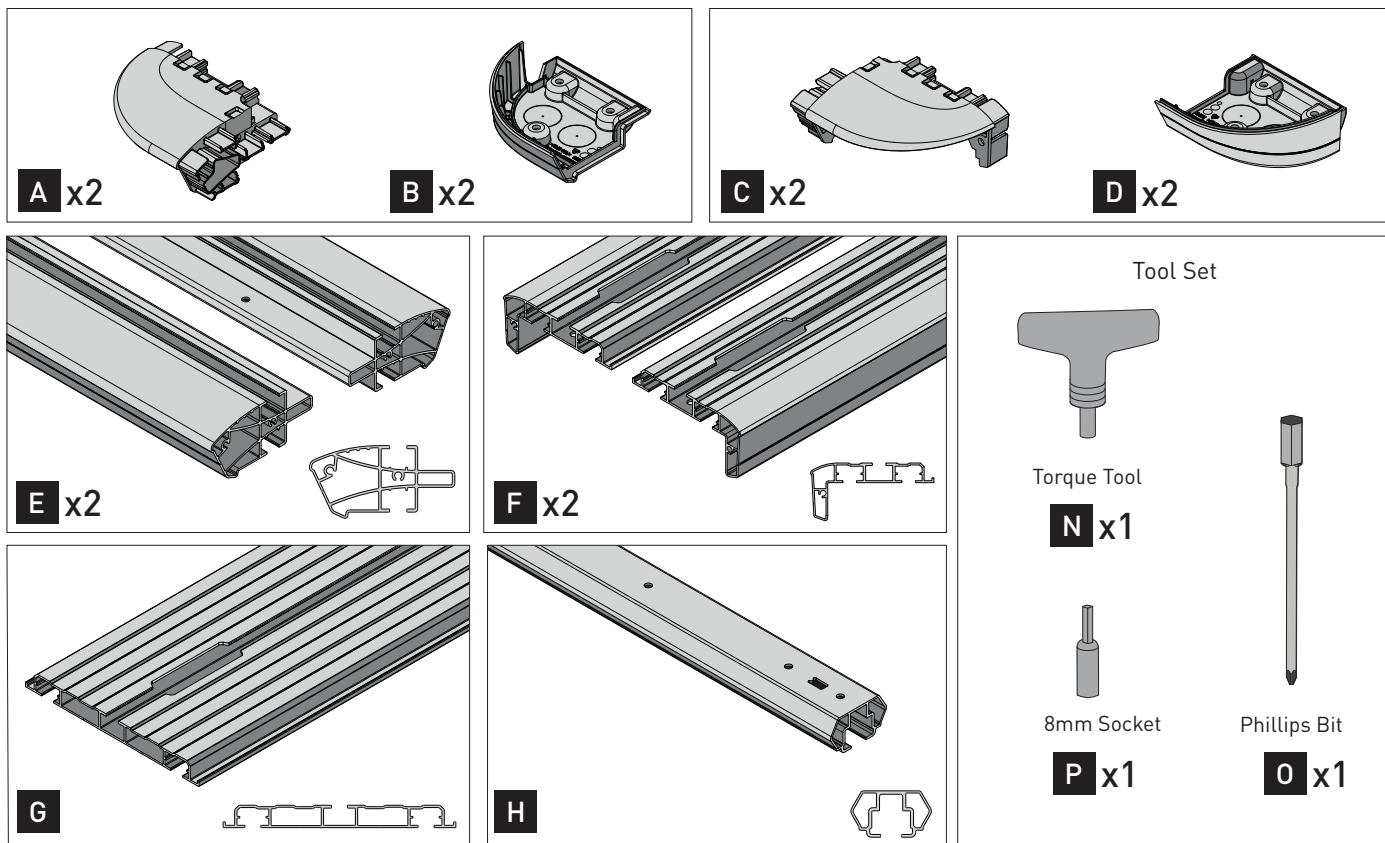
In service maintenance checks

- All bolted connections should be checked after driving a short distance when you first install your roof racks.
- All bolted connections should be checked again at regular intervals (weekly is recommended, depending on road conditions, usage, loads and distances travelled).
- All bolted connections should be checked each time they are re-fitted.

Note for Dealers and Fitters

It is your responsibility to ensure these fitting instructions are given to the end user or client. These instructions remain the property of Rhino-Rack Australia Pty. Ltd. and may not be used or changed for any other purpose than intended.

Instructions



Platform #	L x W (mm)	L x W (inches)	G	H	I	J	K	L	M
52100	1528 x 1236	60' x 49'	4	3	52	52	12	16	6
52101	1528 x 1376	60' x 54'	5	3	62	62	12	16	6
52102	1928 x 1236	76' x 49'	4	5	76	76	12	16	6
52103	1928 x 1376	76' x 54'	5	5	90	90	12	16	6
52104	2128 x 1426	84' x 56'	5	5	90	90	12	16	N/A
52105	2728 x 1465	107' x 58'	5	6	104	104	12	16	N/A
52107	2128 x 1236	84' x 49'	4	5	76	76	12	16	N/A
52108	1828 x 1426	72' x 56'	5	5	90	90	12	16	N/A
52109	1328 x 1236	52' x 49'	4	3	52	52	12	16	N/A
52110	1328 x 1376	52' x 54'	5	3	62	62	12	16	N/A
52111	1328 x 1426	52' x 56'	5	3	62	62	12	16	N/A
52112	928 x 1426	37' x 56'	5	2	48	48	12	16	N/A
52113	1528 x 1426	60' x 56'	5	3	90	90	12	16	N/A
52114	1228 x 952	48' x 37'	3	1	22	22	12	16	N/A
52115	1478 x 1184	58' x 47'	4	1	28	28	12	16	N/A
52119	2528 x 1586	100' x 62'	5	6	104	104	12	16	N/A
52120	1528 x 1586	60' x 62'	5	3	62	62	12	16	N/A
52121	1228 x 1426	48' x 56'	5	3	62	62	12	16	N/A

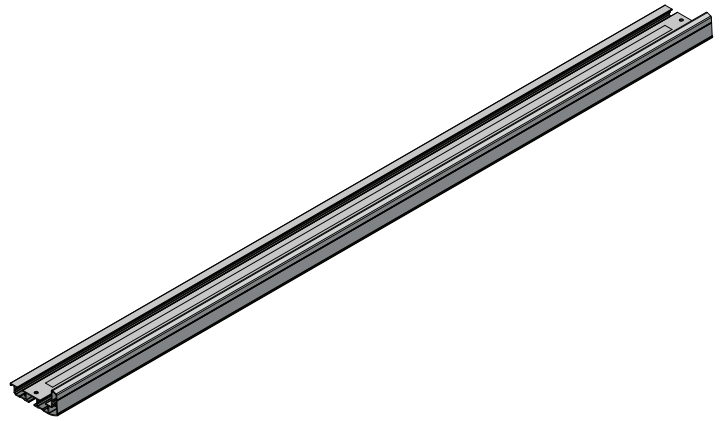
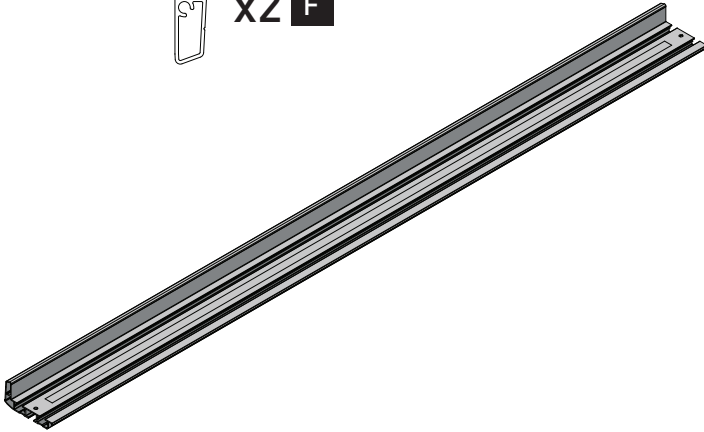
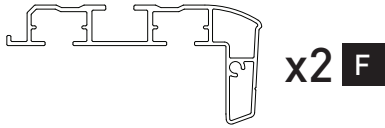
Tools required:

Herramientas necesarias:

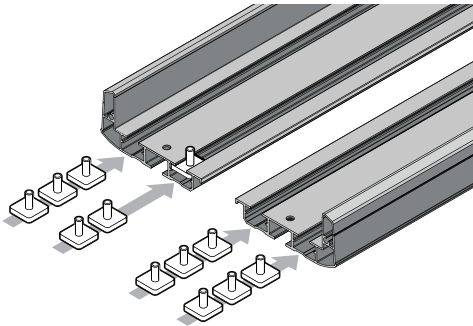
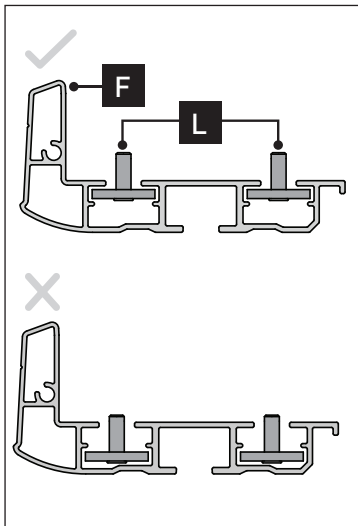
T1 - Phillips head screwdriver.

T2 - Power drill.

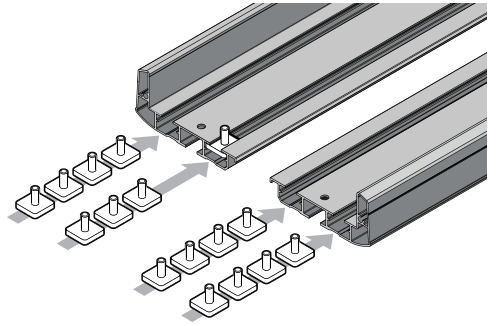
Instructions



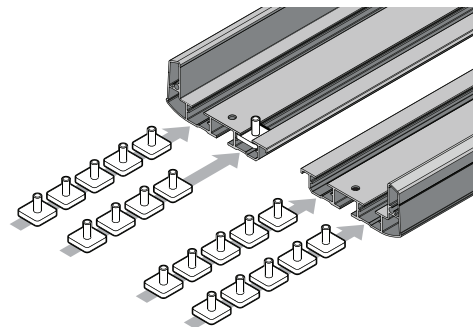
1



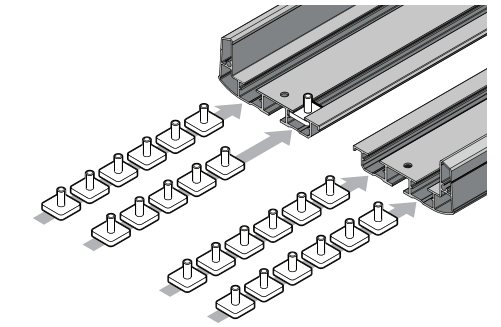
H **I**
x3 = x12



H **I**
x4 = x16

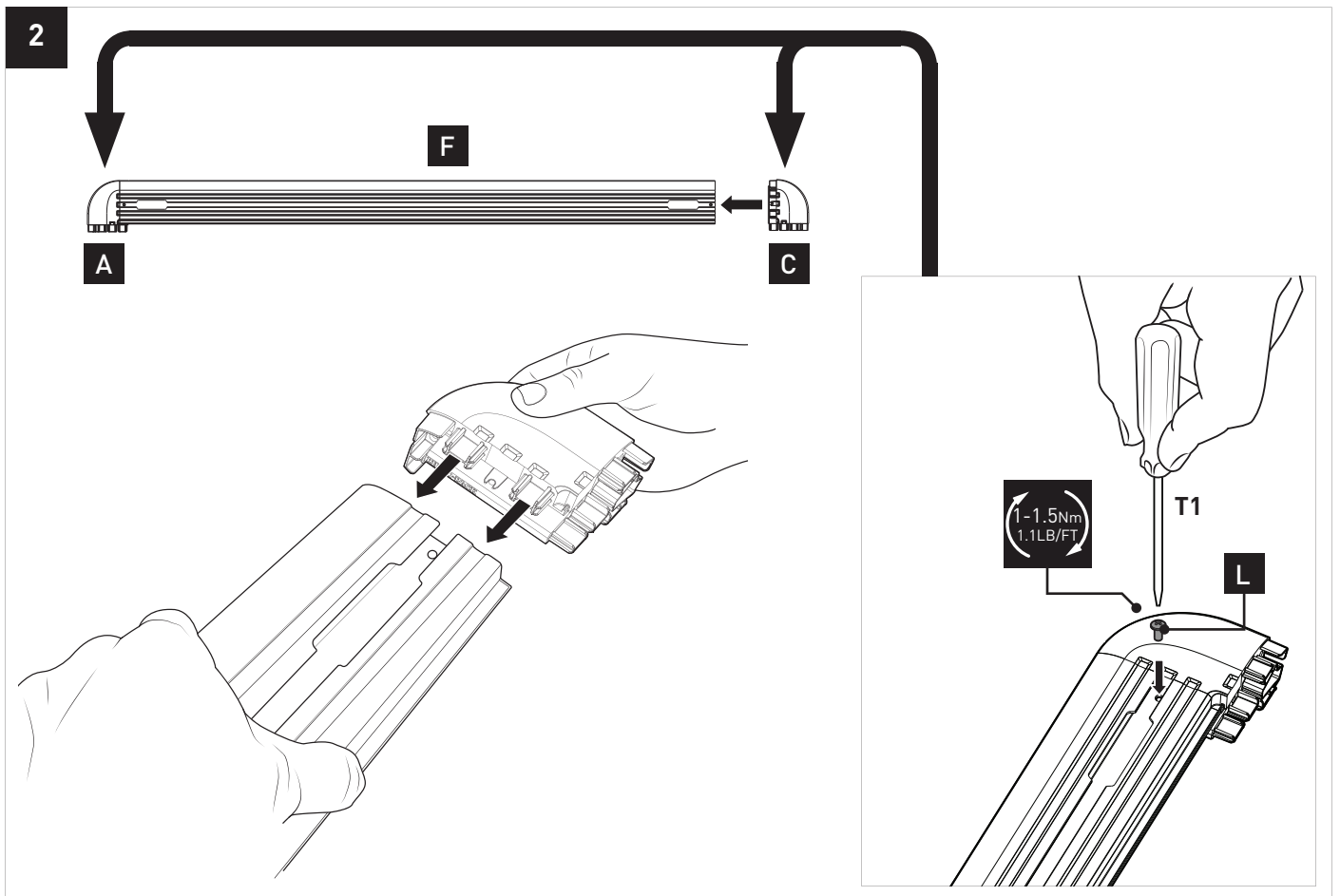
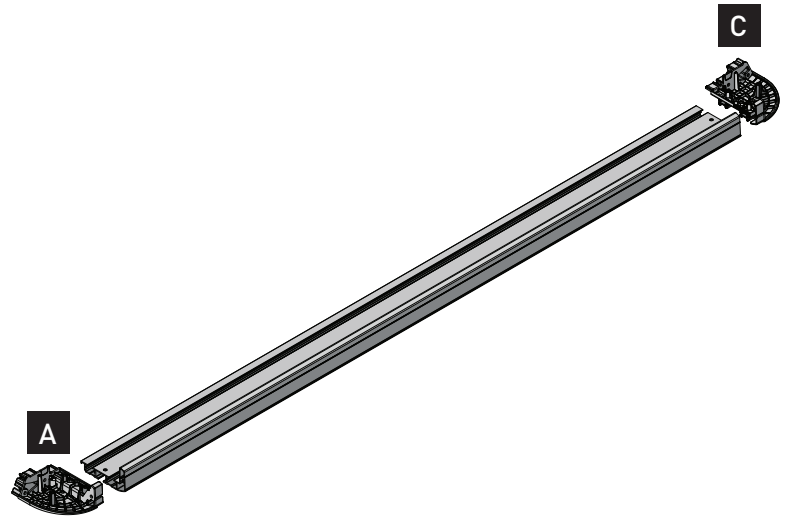
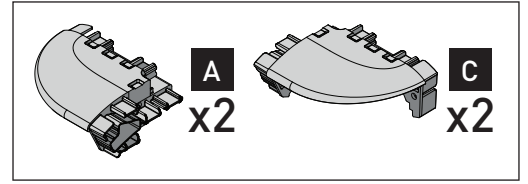


H **I**
x5 = x20

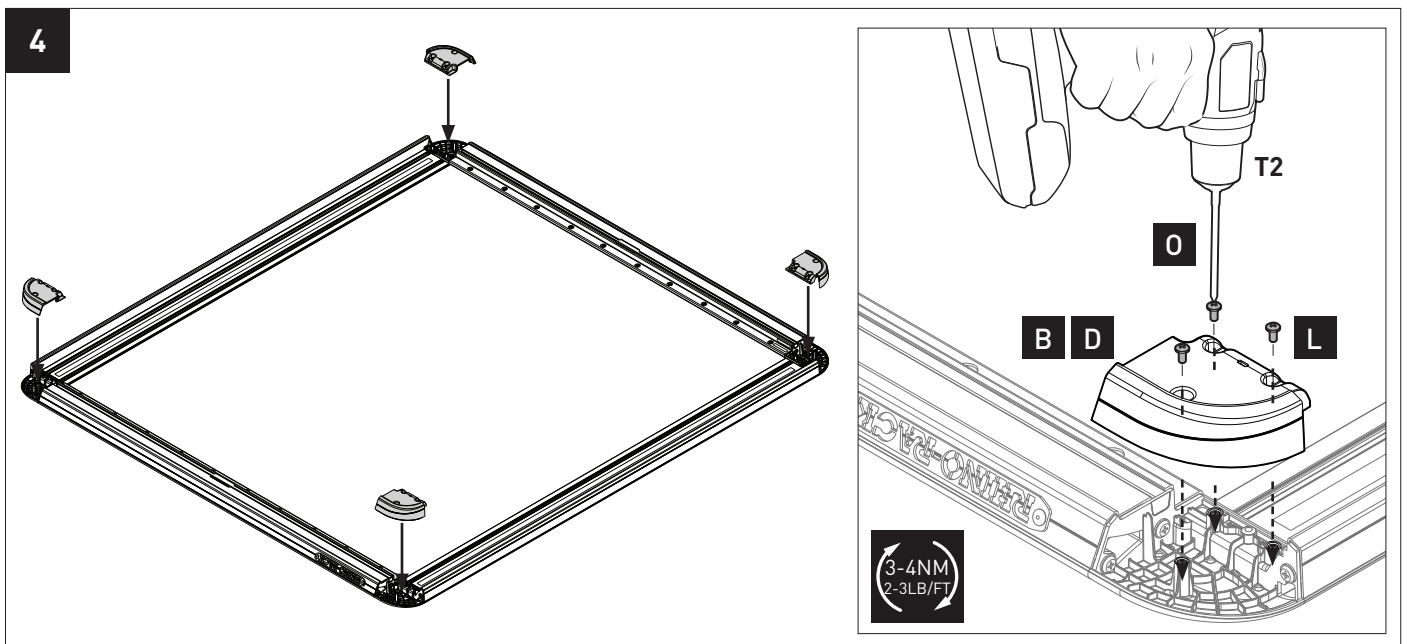
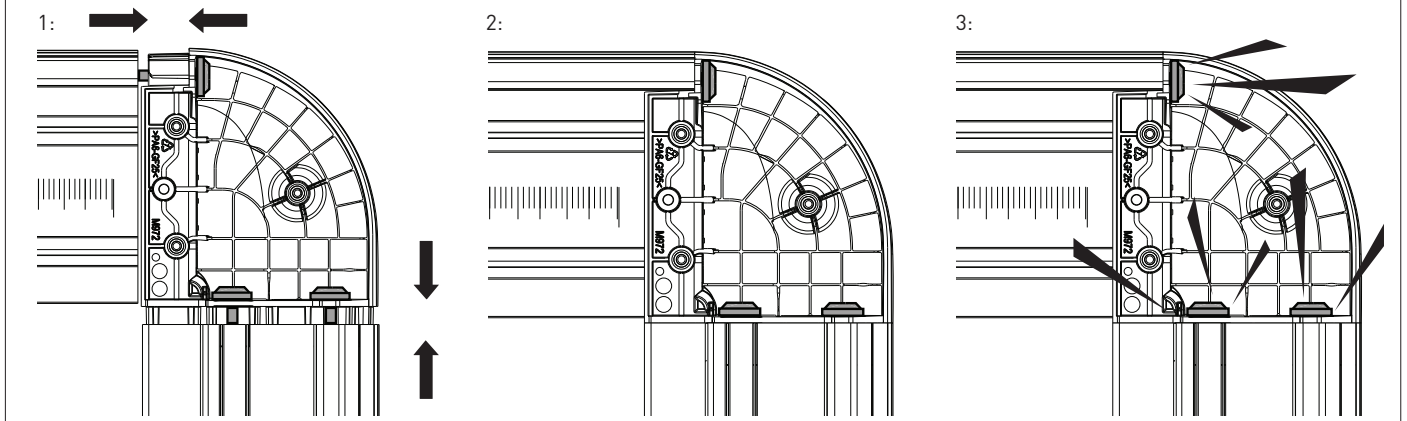
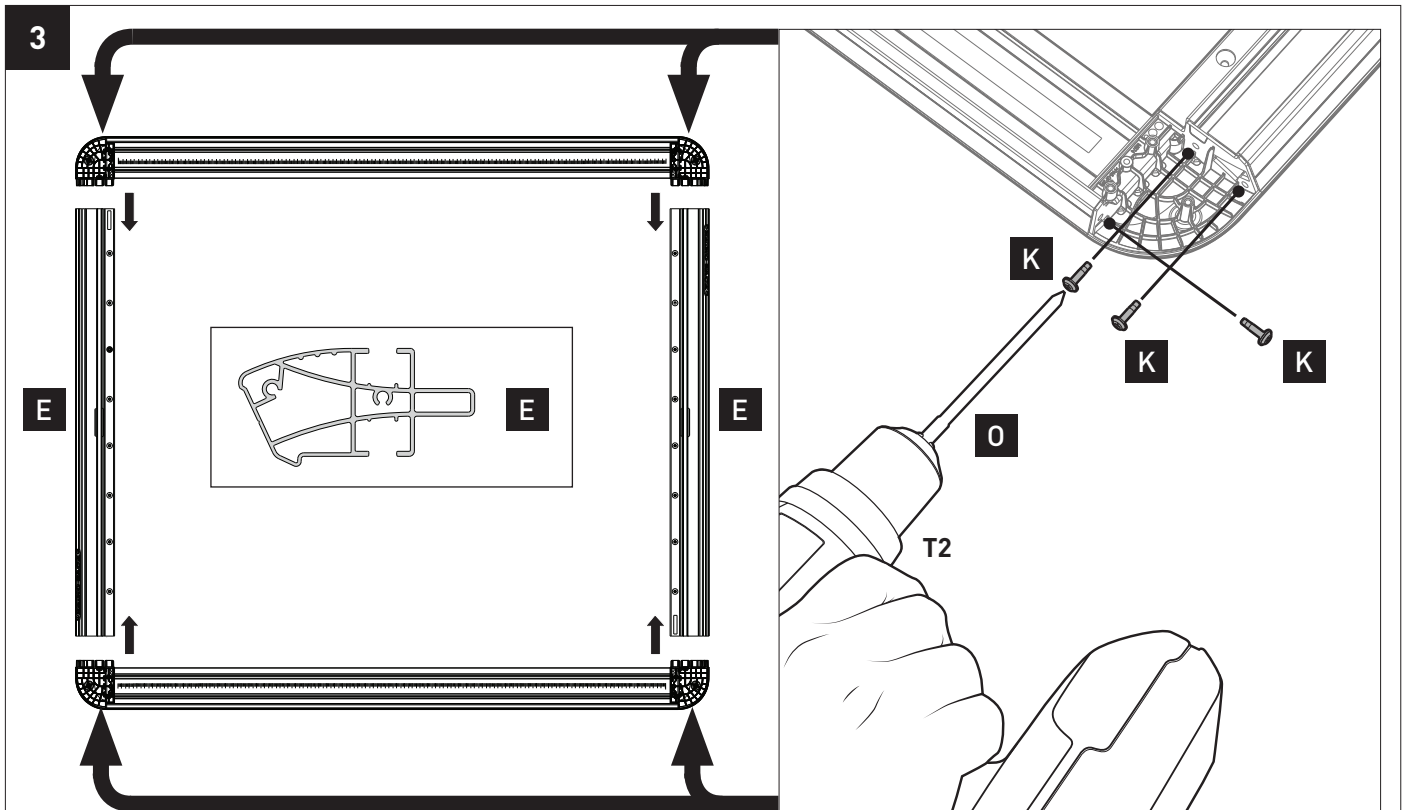


H **I**
x6 = x24

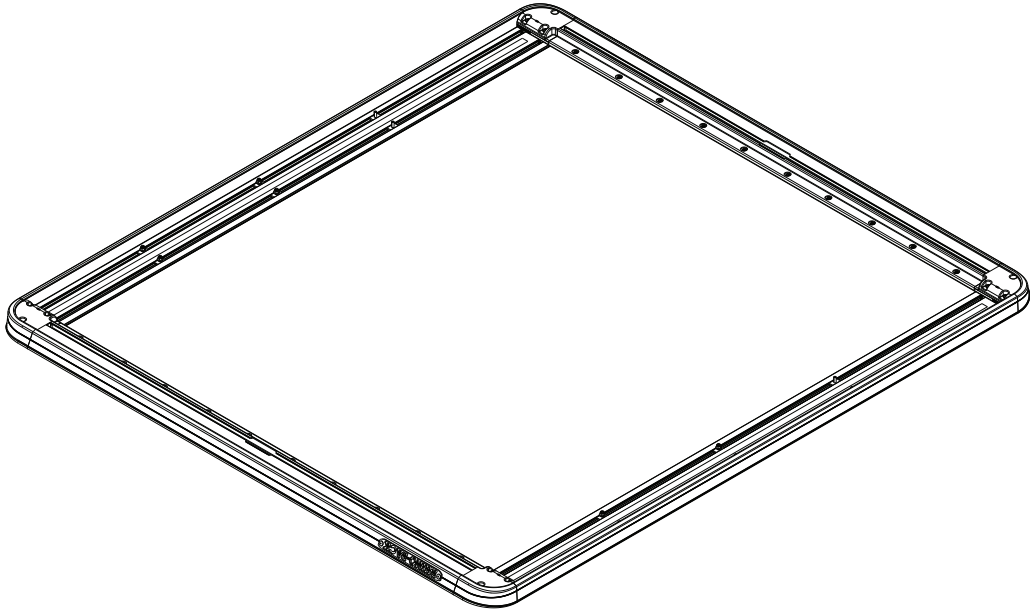
Instructions



Instructions

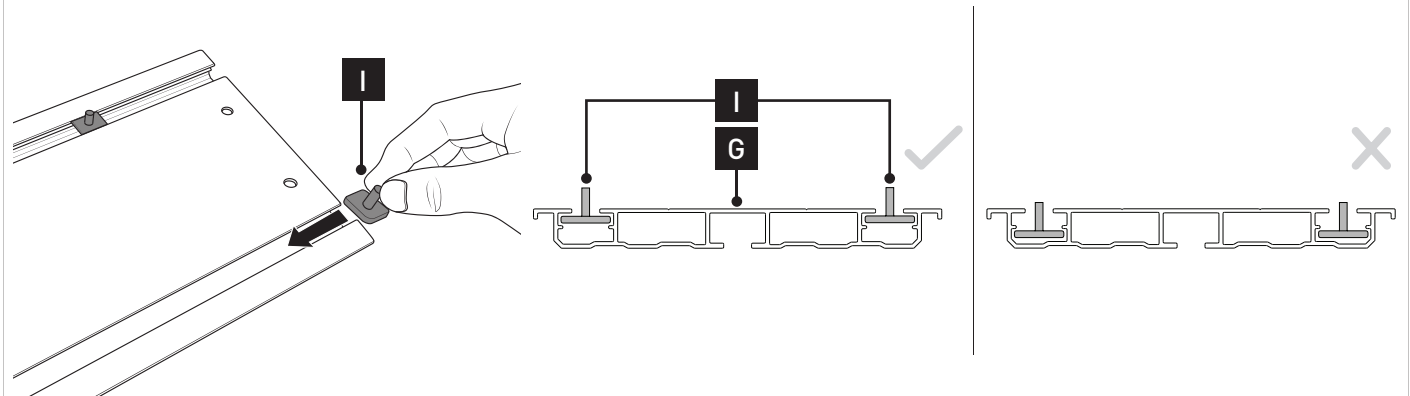


Instructions

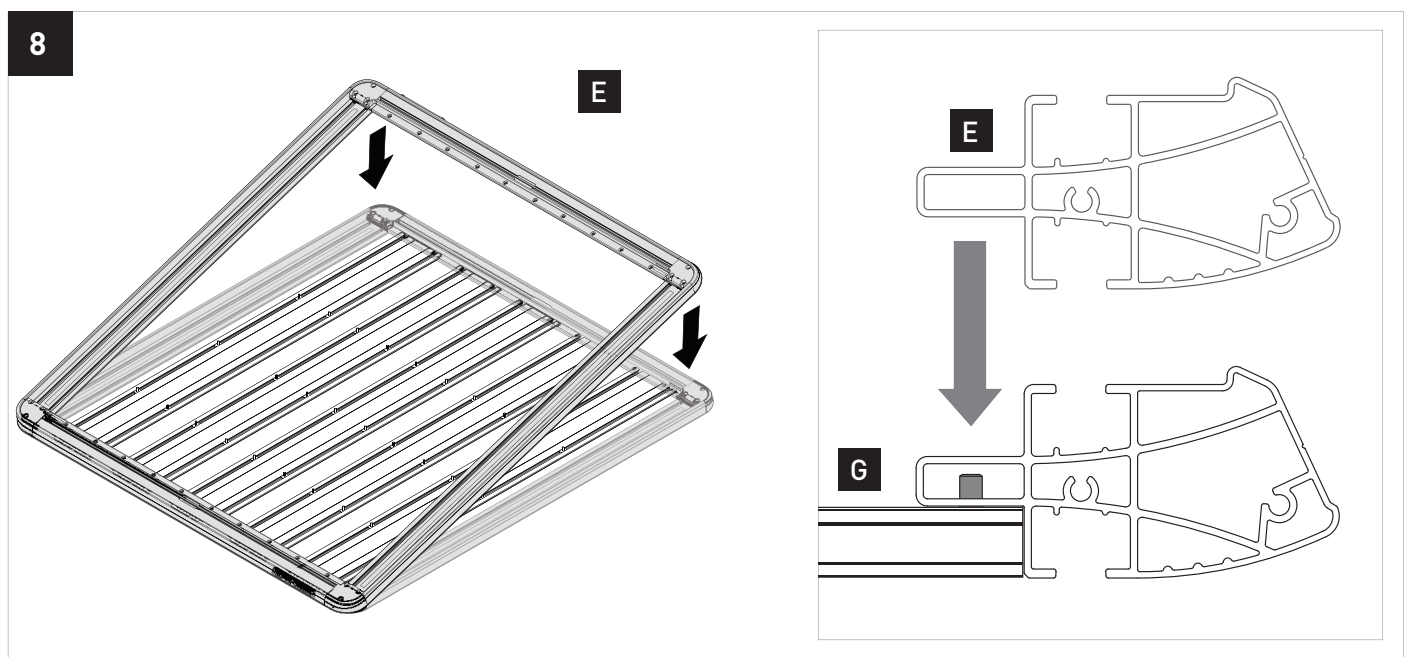
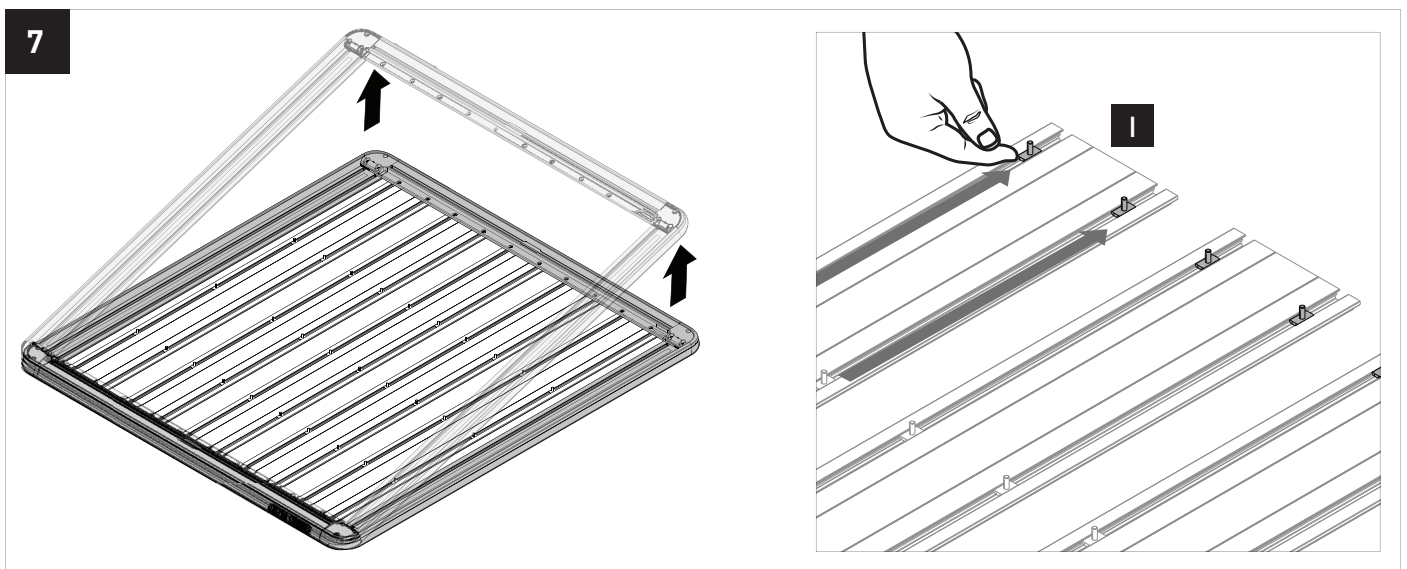
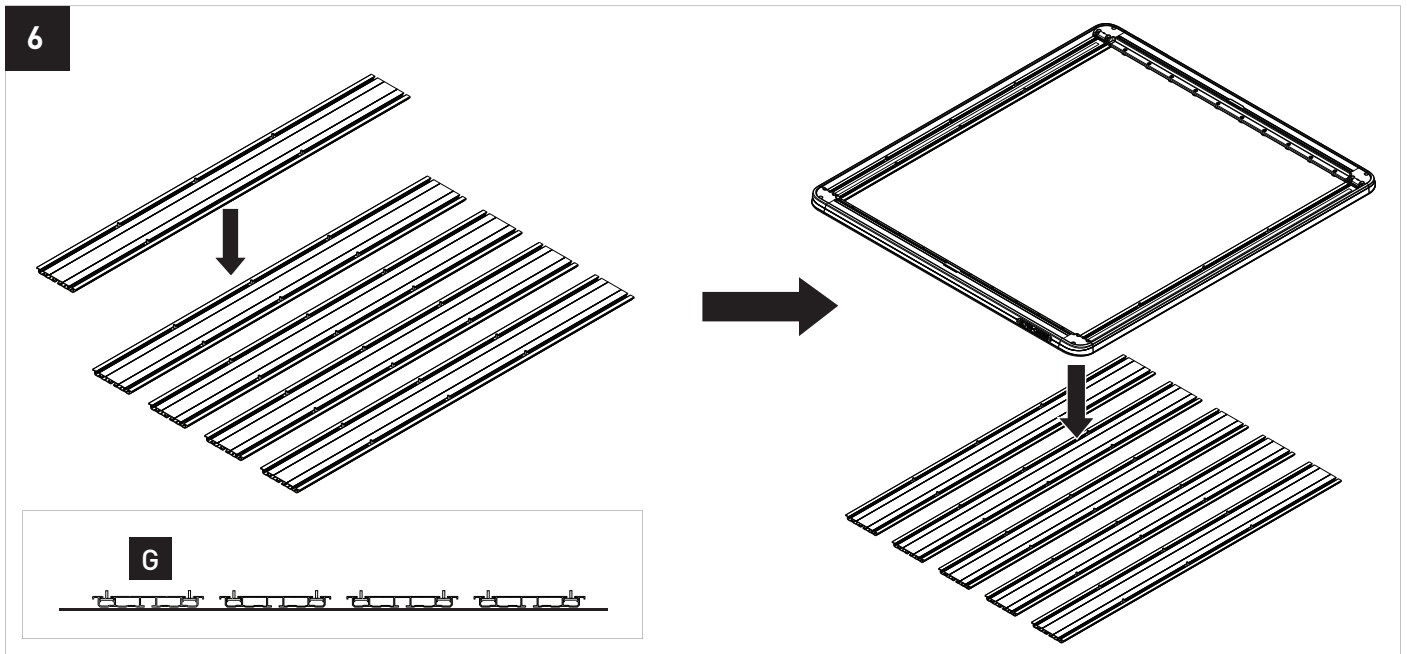


5

<p>E x3 + H x10 = I x10</p>	<p>E x4 + H x12 = I x12</p>	<p>E x5 + H x14 = I x14</p>	<p>E x6 + H x16 = I x16</p>

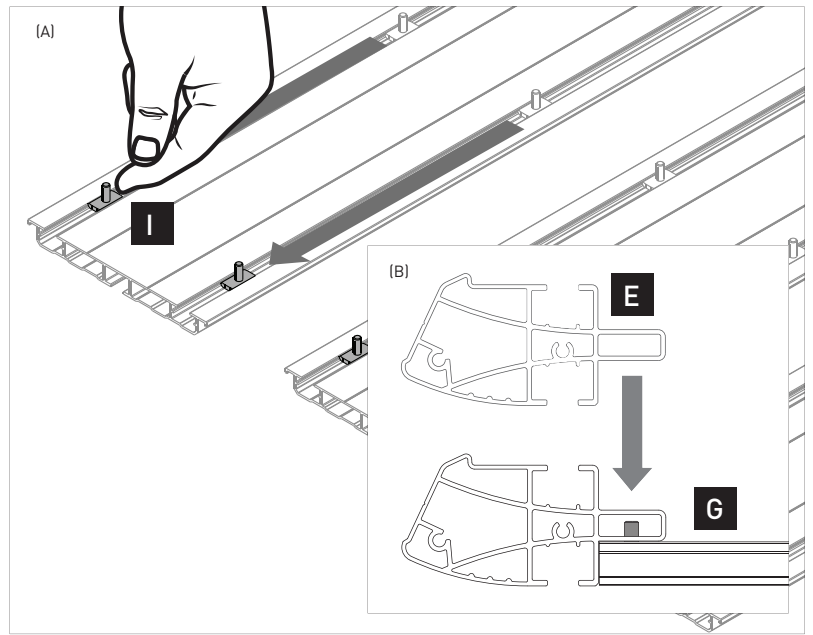
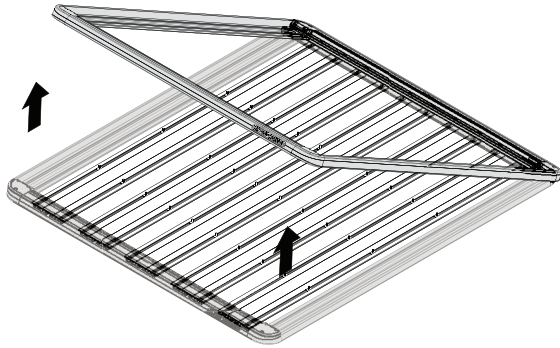


Instructions

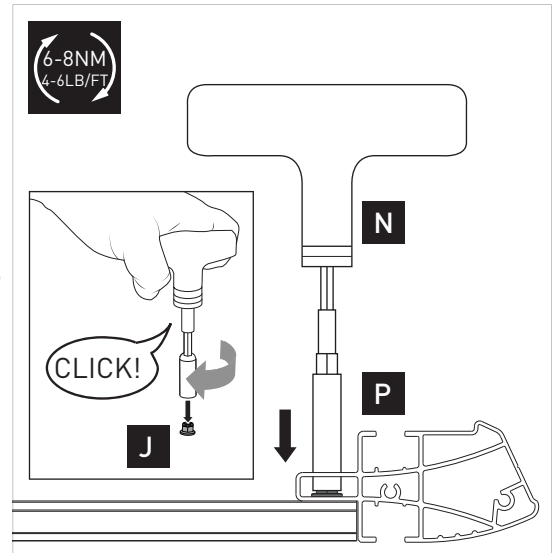
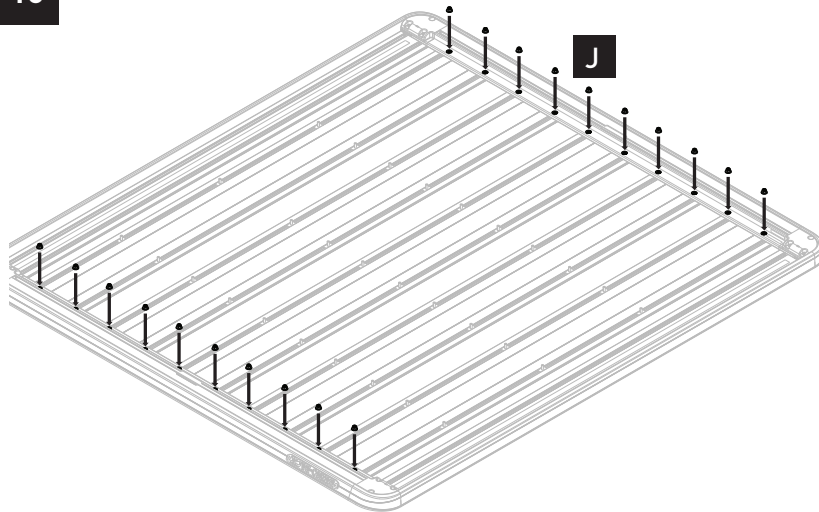


Instructions

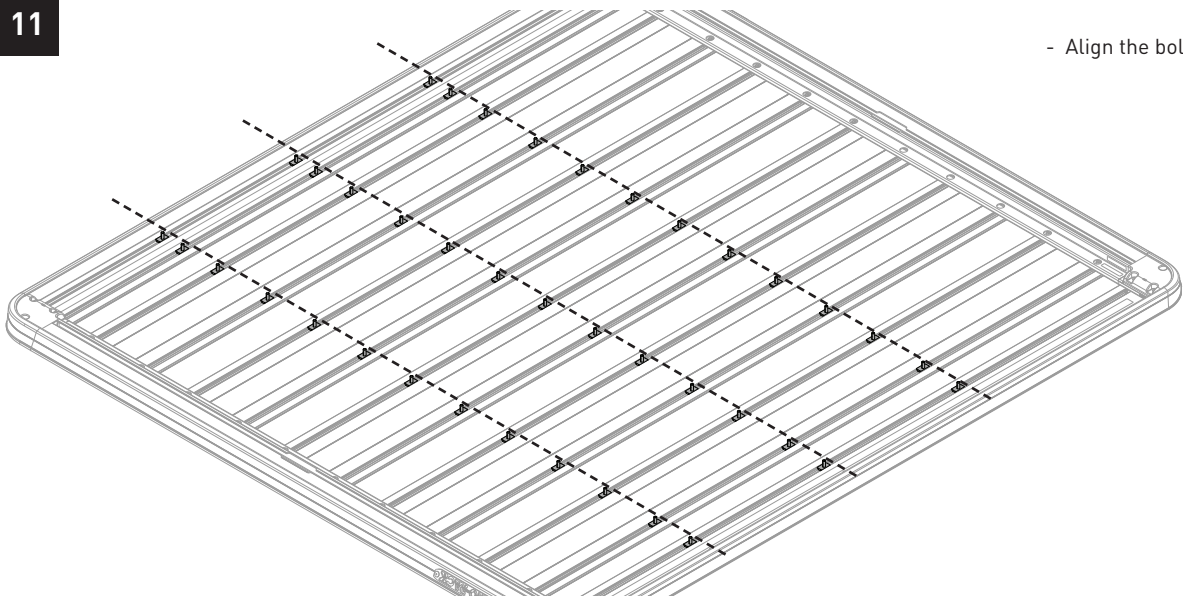
9



10



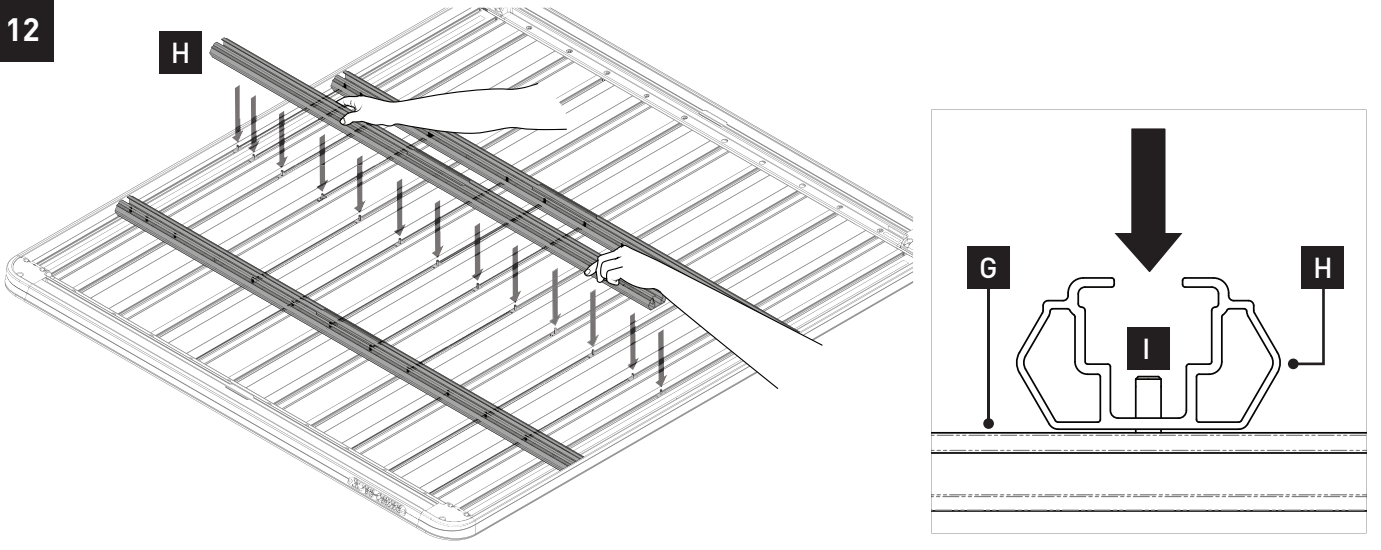
11



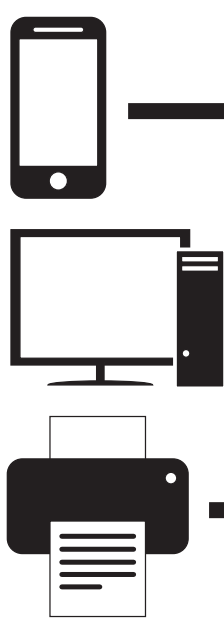
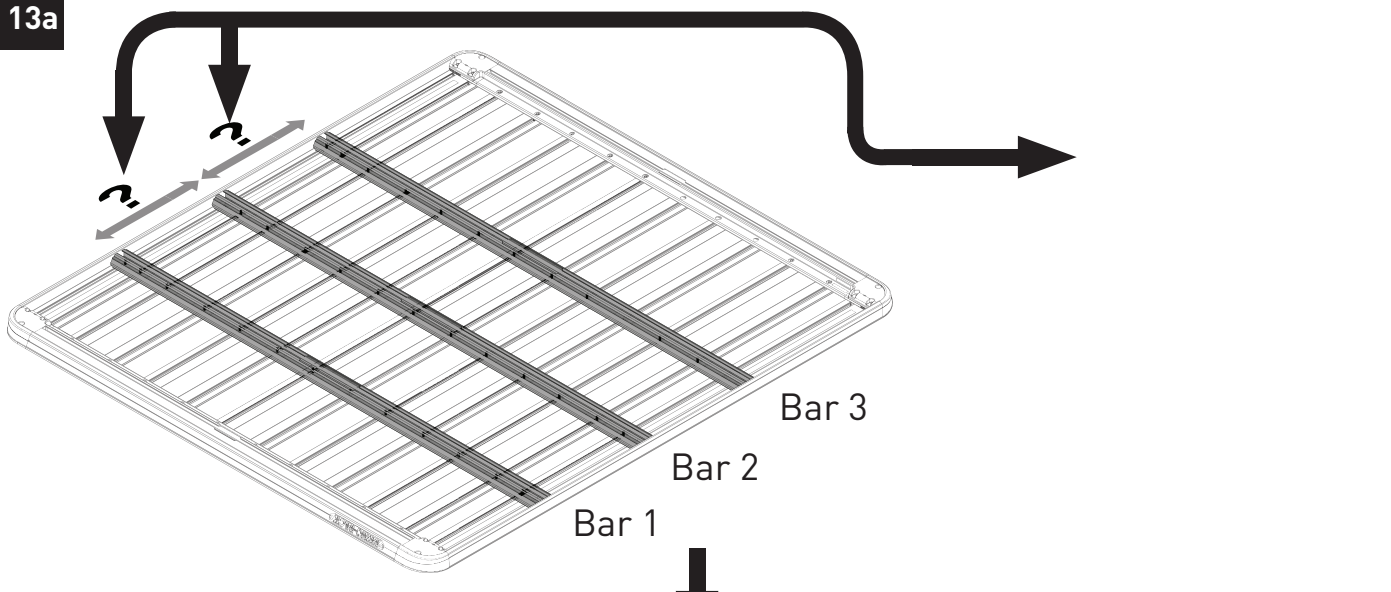
- Align the bolts **I**

Instructions

12



13a



RHINO-RACK | PIONEER VEHICLE FITTING INFORMATION

VEHICLE	PIONEER SIZE	CONNECTOR	HEIGHT ADDED (mm / in)
EXAMPLE ONLY	53100	RCL	120.0 / 4.7

IMPORTANT NOTES RCP48-BK required. Fixed point factory mount. -

REGION	AUS	NZ	USA	CA	SA	UK	EU	ZA
AVAILABILITY	✓	✓	x	x	x	x	x	x
RUNNING DATES	02/15 -	02/15 -	-	-	-	-	-	-

UNDERBAR SPACING

SIZE NO.	A	B	C	D	E	F	G
DIMENSION (CM)	42.3	0	42.2				
SPACERS REQ'D							
CONNECTOR	RCL		RCL				

VEHICLE LOAD LIMIT (VLL) (kg / lbs)	SYSTEM WEIGHT (SW) (kg / lbs)	ON-ROAD CARGO ALLOW. (ORA)	OFF-ROAD CARGO ALLOW. (OFRA)
Up to 100 / 220.5 *	19 (41.2)	OR = VLL - SW	OFRA = OR / 1.5

*CHECK YOUR VEHICLE OWNERS HANDBOOK FOR VEHICLE MAXIMUM CARRYING CAPACITY. PLEASE ENSURE YOU USE THE VEHICLE MANUFACTURERS MAXIMUM ROOF ALLOWANCE IF IT IS LOWER THAN THE FIGURES LISTED IN THIS INSTRUCTION.

Bar 1, 2, 3

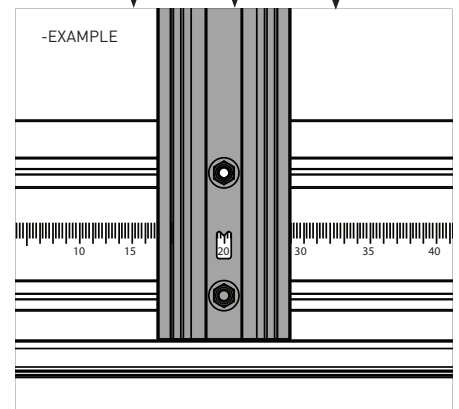
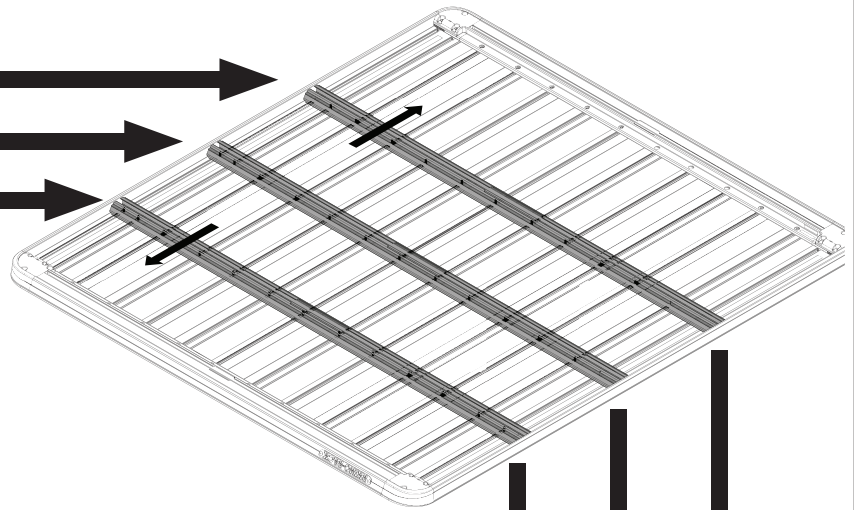


13b

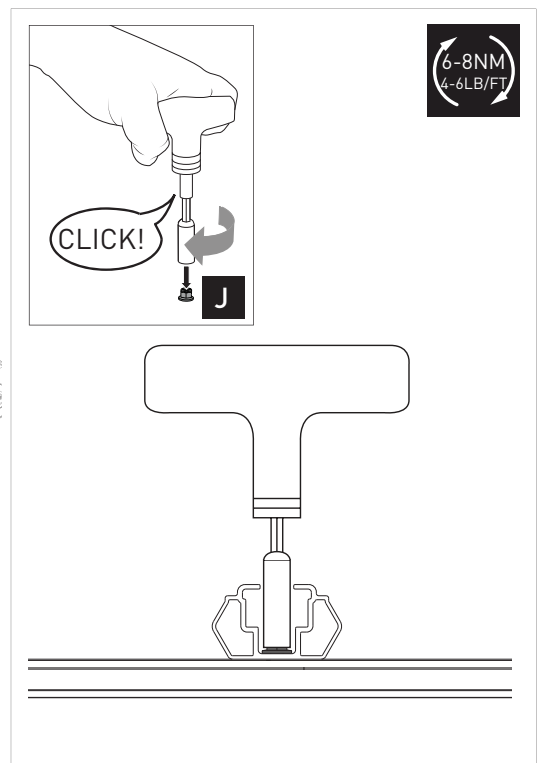
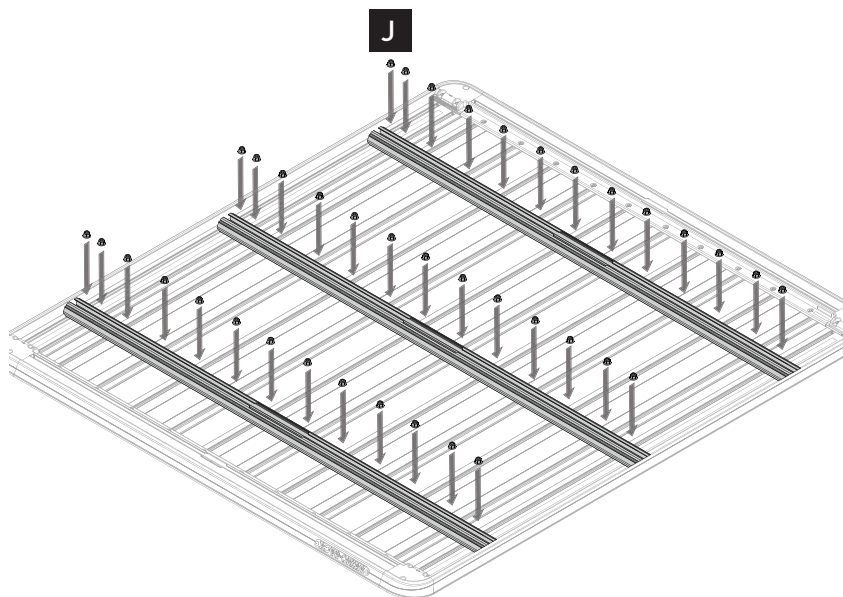
RHINO-RACK PIONEER VEHICLE FITTING INFORMATION

VEHICLE	PIONEER SIZE	CONNECTOR	HEIGHT ADDED (mm / in)							
EXAMPLE ONLY	92100	RCL	120.0 / 4.7							
IMPORTANT NOTES RCP68-BK required. Fixed point factory mount. -										
REGION	AUS	NZ	USA	CA	SA	UK	EU	ZA		
AVAILABILITY	✓	✓	x	x	x	x	x	x		
RUNNING DATES	02/15 -	02/15 -	-	-	-	-	-	-		
UNDERBAR SPACING										
BAR NO	A	B	C	D	E	F				
DIMENSION (CM)	45.7	B	45.2							
SPACERS REQ'D										
CONNECTOR	RCL		RCL							
VEHICLE LOAD LIMIT (VLL) (kg / lbs)	SYSTEM WEIGHT (SW) (kg / lbs)		ON-ROAD CARGO ALLOW. (OR)			OFF-ROAD CARGO ALLOW. (OFR)				
Up to 100 / 220.5 *	19 / 41.2		OR = VLL - SW			OFR = OR / 1.5				

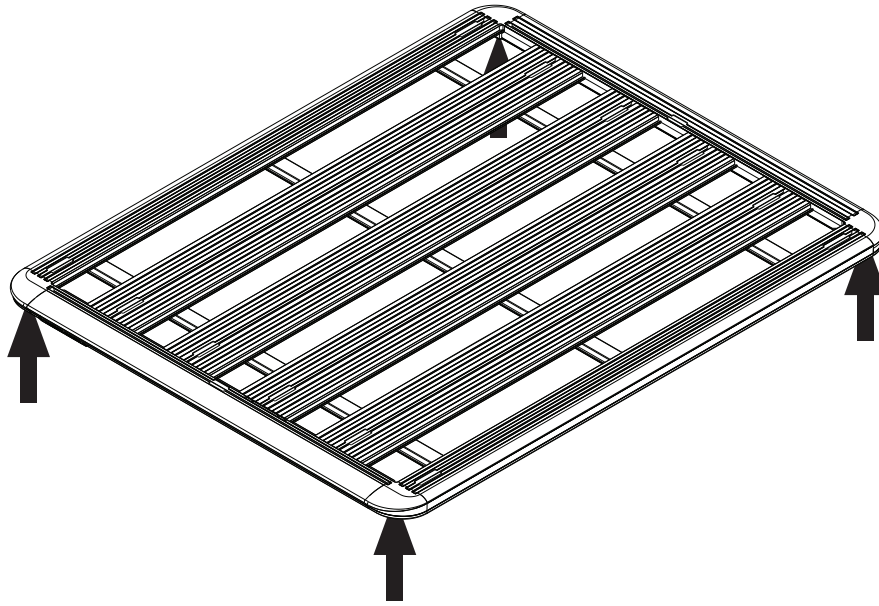
*CHECK YOUR VEHICLE OWNERS HANDBOOK FOR VEHICLE MAXIMUM CARRYING CAPACITY. PLEASE ENSURE YOU USE THE VEHICLE MANUFACTURERS MAXIMUM ROOF ALLOWANCE IF IT IS LOWER THAN THE FIGURE LISTED IN THIS INSTRUCTION.



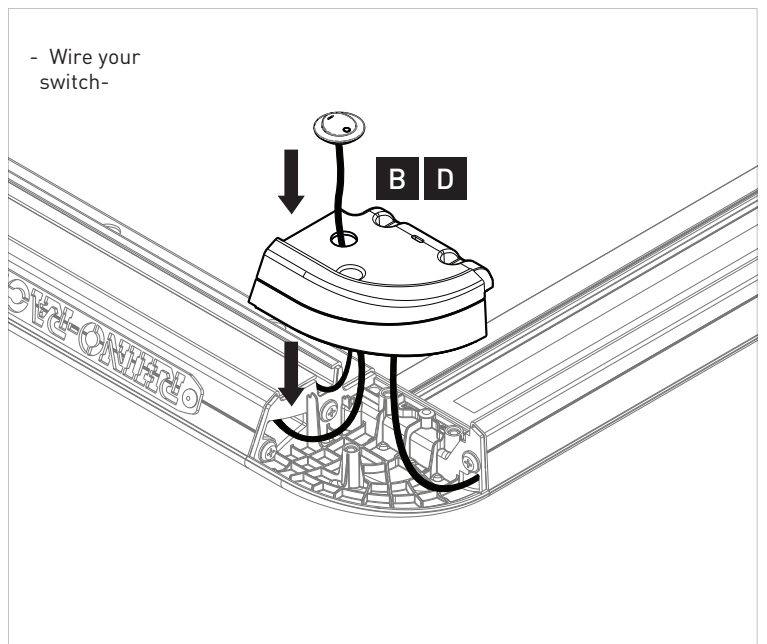
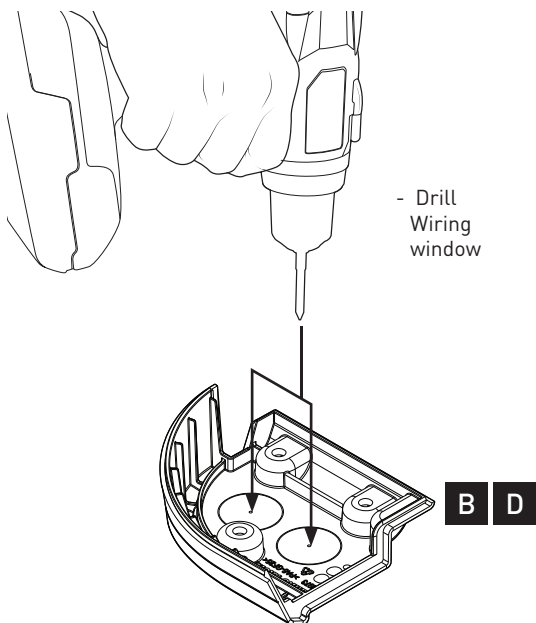
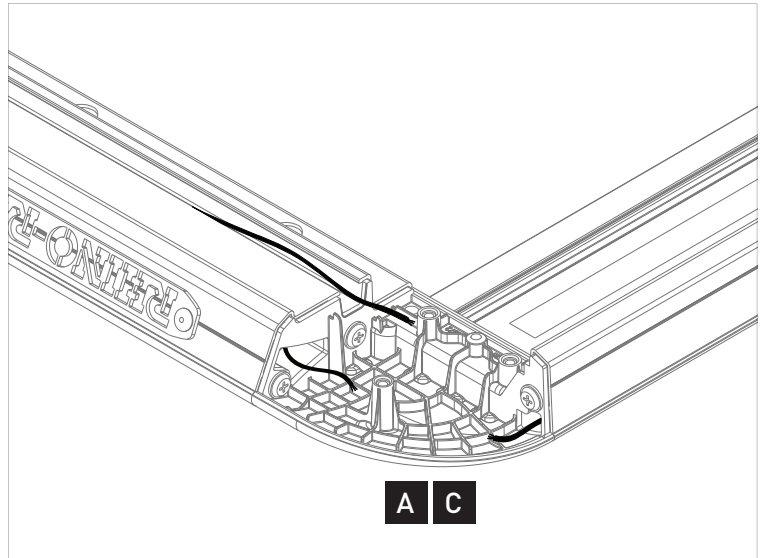
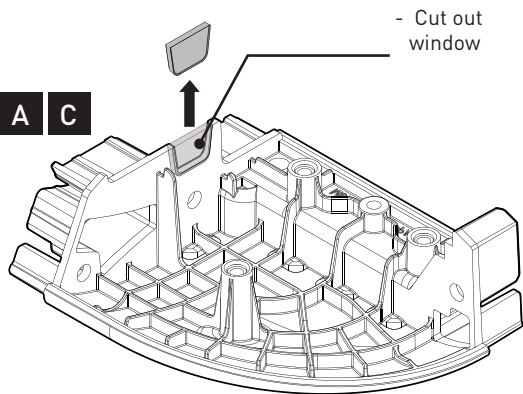
14



Instructions

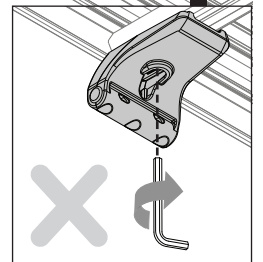
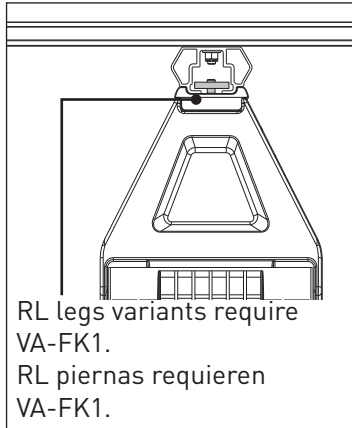
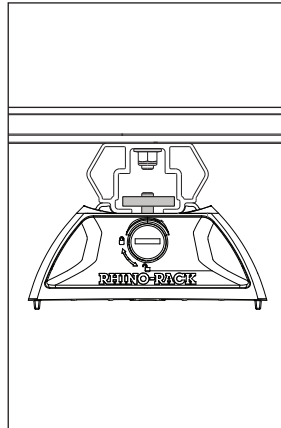
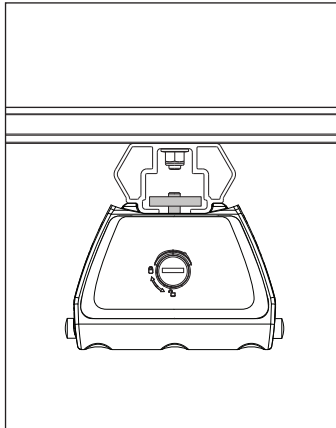
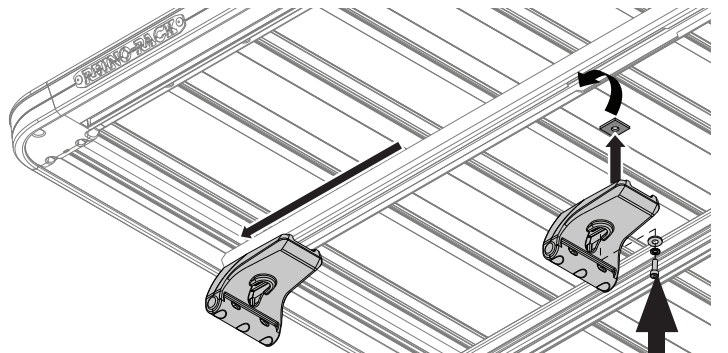
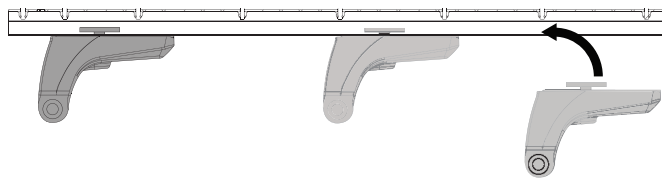


Note - For Wiring



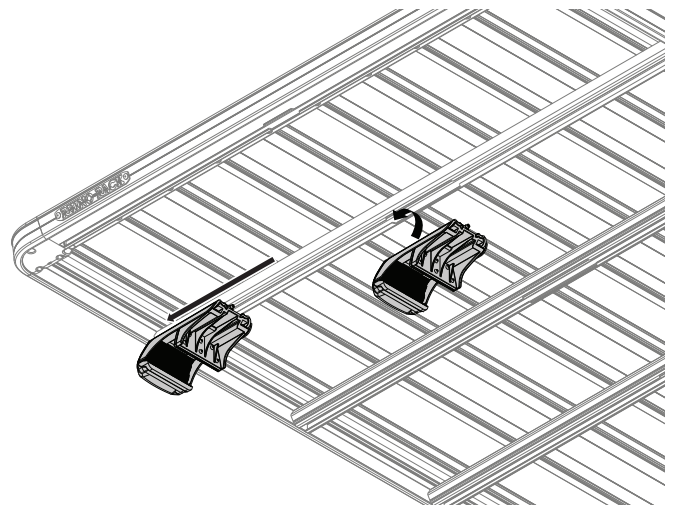
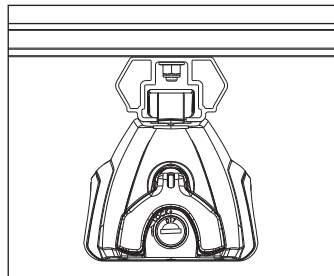
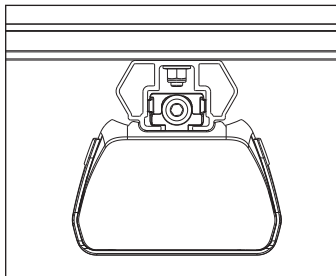
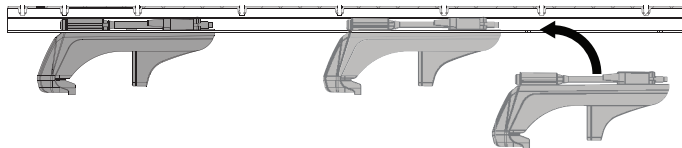
Instructions

15 RLT600, RCL/RCH,
RL leg variants.

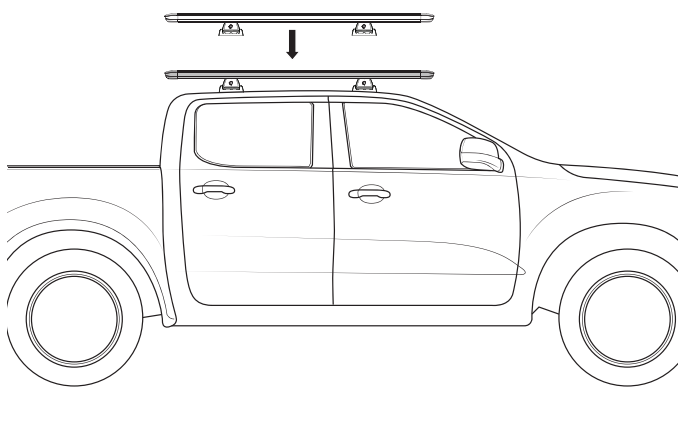


RL legs variants require
VA-FK1.
RL piernas requieren
VA-FK1.

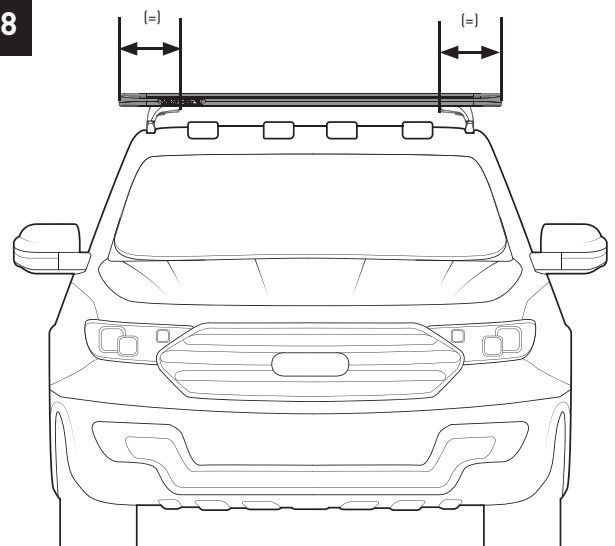
16 SXB



17

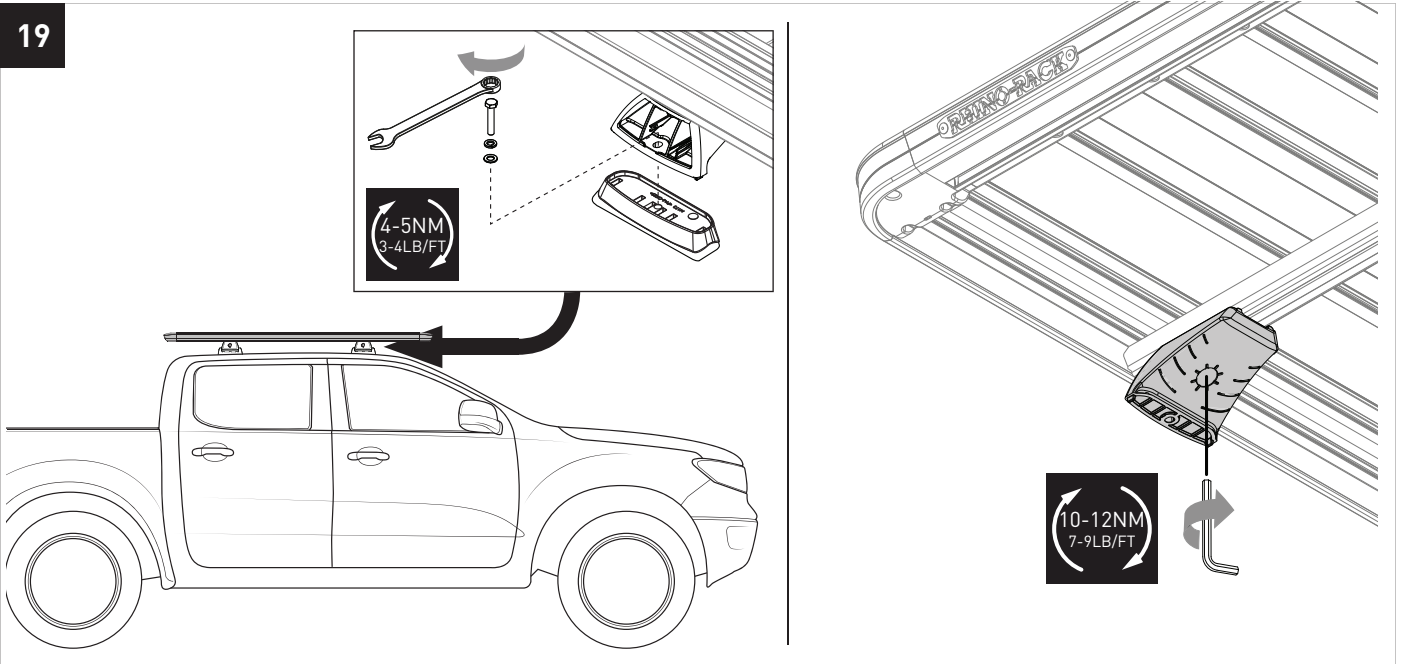


18

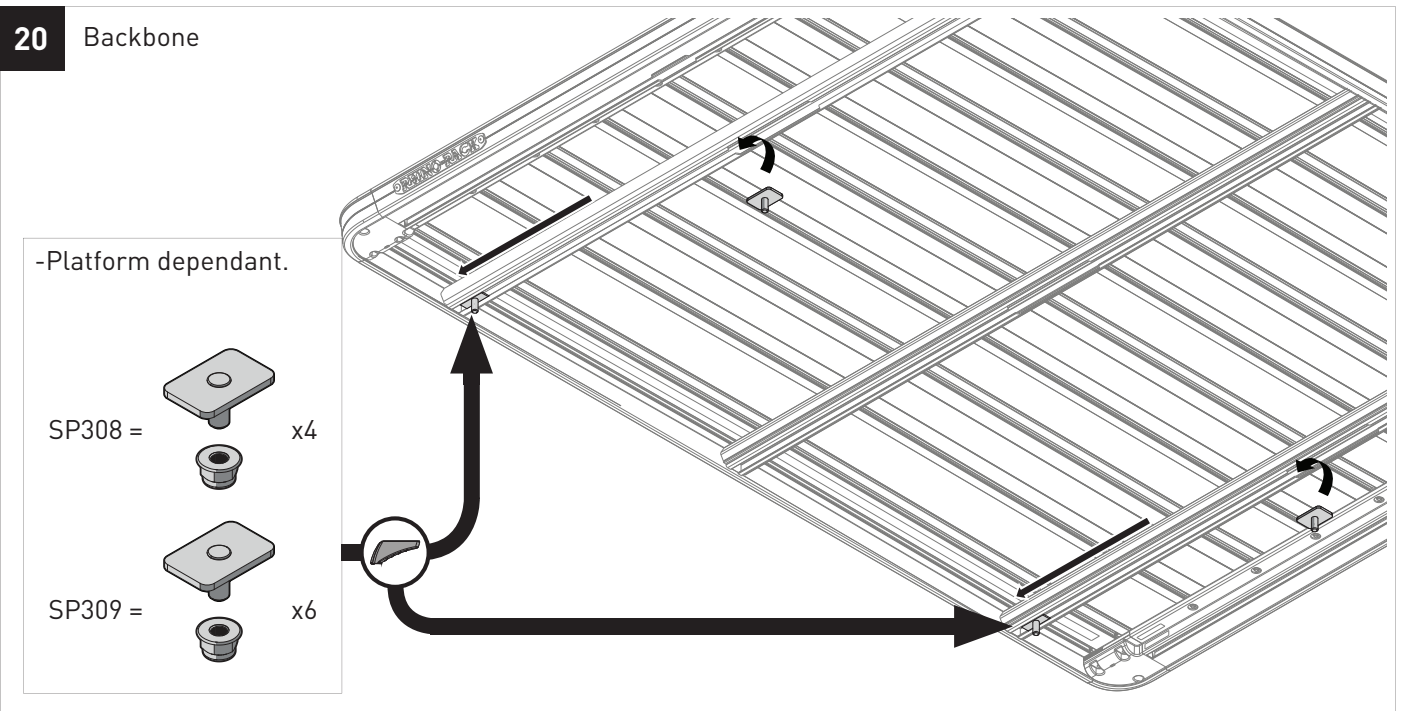


Instructions

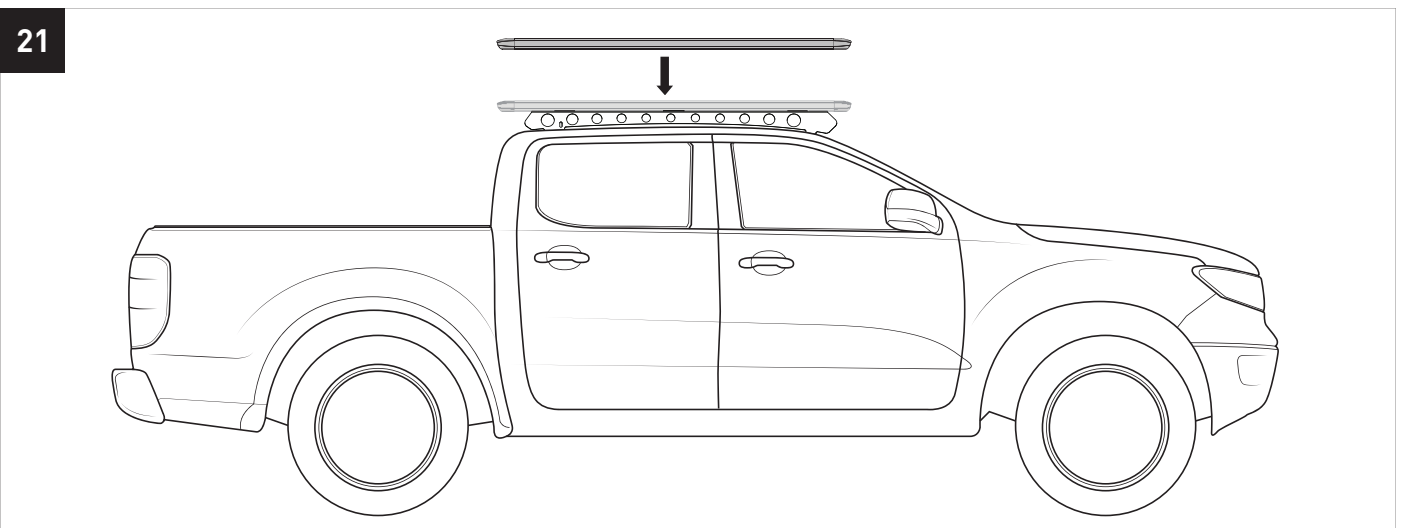
19



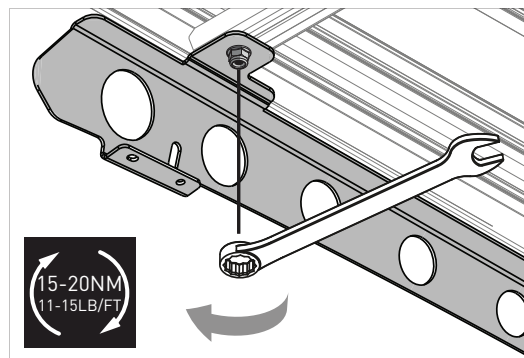
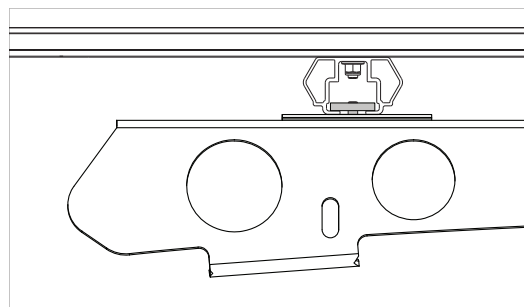
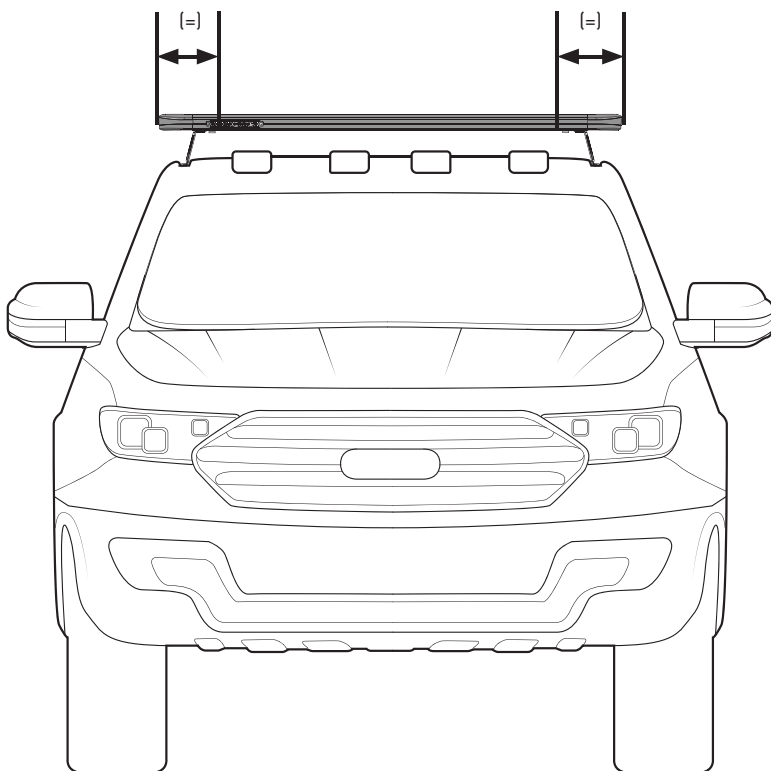
20 Backbone



21

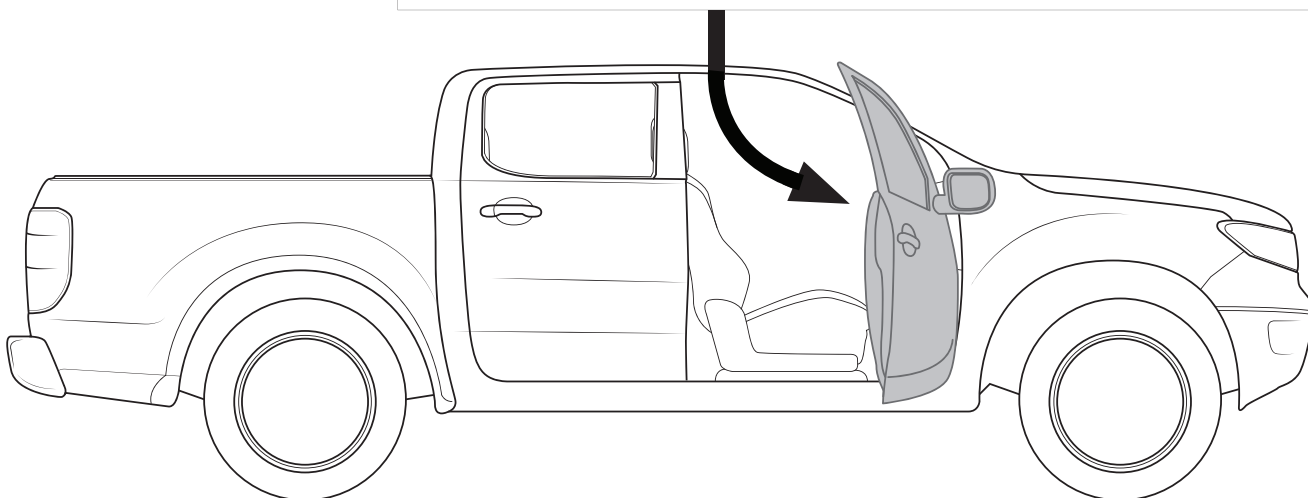


22



Note

Model	Year	Roof Height	Roof Load Capacity
Pioneer	2015-2017	54.5"	150 lbs
Pioneer	2018-2019	54.5"	150 lbs
Pioneer	2020-2021	54.5"	150 lbs
Pioneer	2022	54.5"	150 lbs





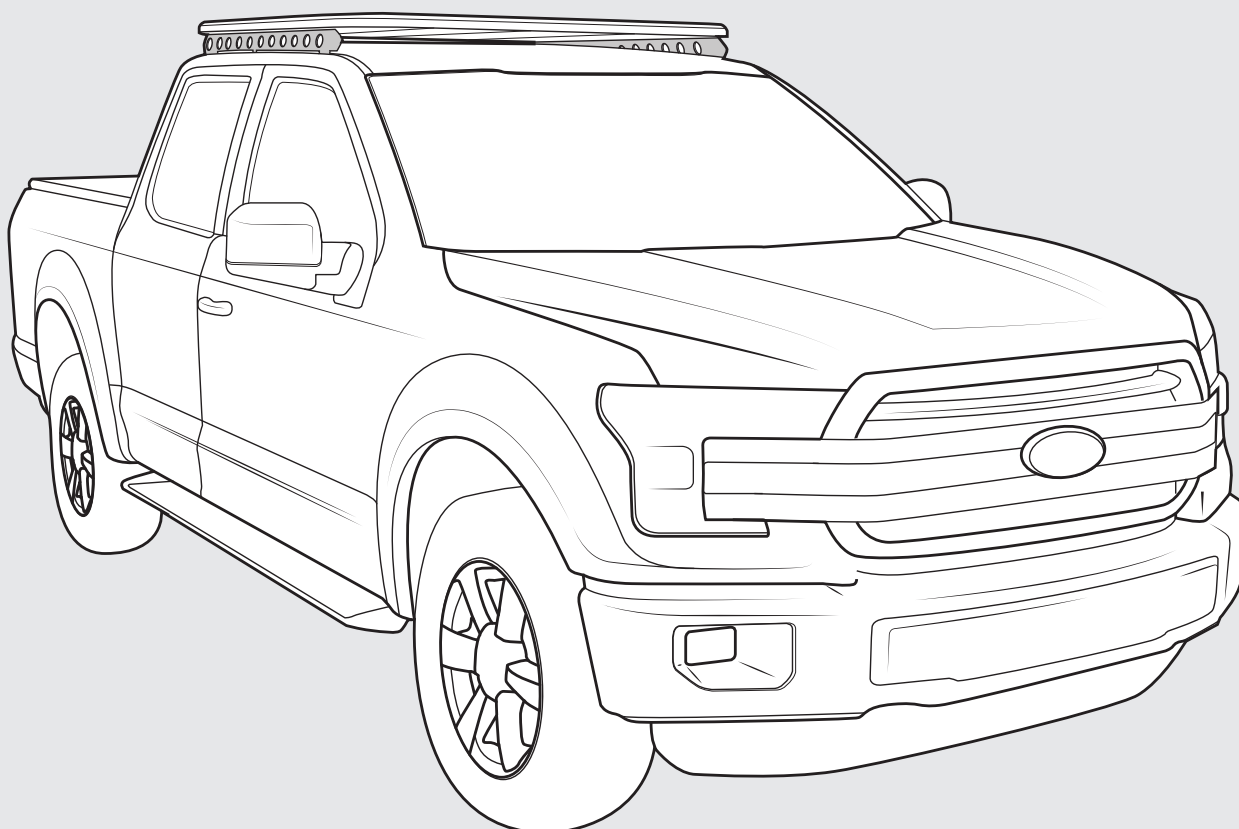
RHINO-RACK

FORD F250/F350/F450 SUPER CREW BACKBONE - RF2B3

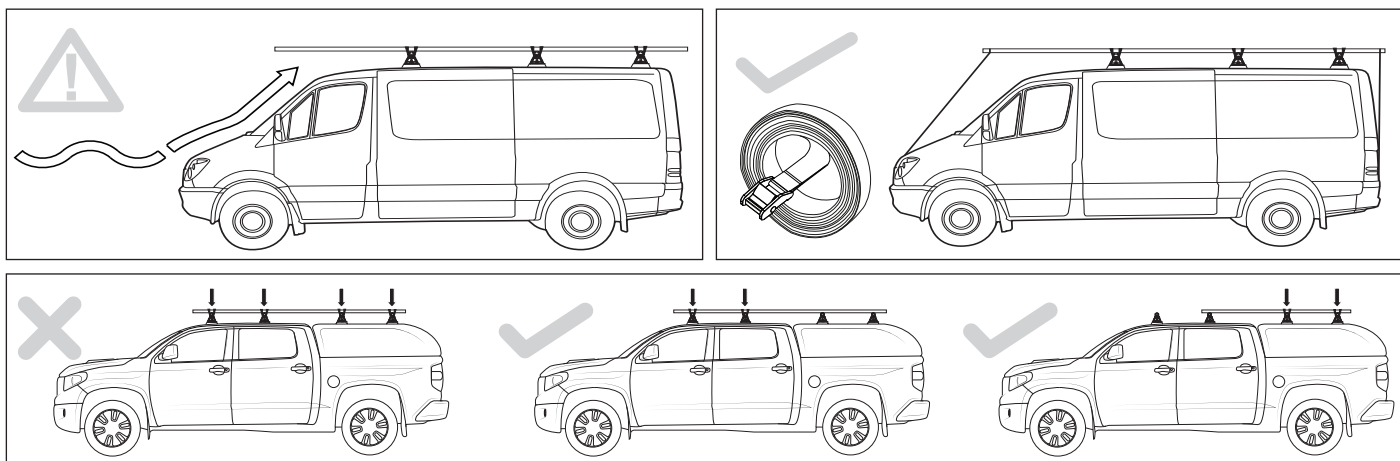
Important:

1. Check the Rhino-Rack website to ensure you have the latest issue of these instructions.
2. Please refer to your fitting instruction to ensure that the roof racks are installed in the correct locations.
3. Check the contents of kit before commencing fitment and report any discrepancies.
4. Place these instructions in the vehicle's glove box after installation is complete.
5. These instructions must be followed for warranty to be upheld.

Fit Time: 45 mins



RF2B3 Instructions



ON ROAD CARGO ALLOWANCE (OR)	OFF ROAD ROAD CARGO ALLOWANCE (OR)	VEHICLE ROOF LOAD LIMIT (VLL)	SYSTEM WEIGHT (SW)
$(OR) = (VLL) - (SW)$	$(OFR) = (OR) / 1.5$	100kg / 220lb (CHECK VEHICLE OWNERS HANDBOOK FOR SPECIFIC FIGURE).	31.5kg / 67lb

Carrying Capacity

Check your vehicle owners hand book for vehicle maximum carrying capacity. Please ensure you use the vehicle manufactures maximum roof allowance if it is lower than the figure listed in this instruction.

Load must be evenly distributed over the system.

Off Road: Any driven path taken that does not contain a surface protection layer (tar/bitumen).

Vehicle Load Limit: Total permissible weight attached to the roof of the car. This is inclusive of the weight of the roof rack system.

System Load Limit: Total permissible weight allowed on top, and attached to roof racks whilst the vehicle is in motion.

Torque Settings

Unless stated otherwise in these instructions, all fasteners should be set to the following torque settings - M6: 4-5Nm (3-4lbs/ft), M8: 8-10Nm (6-7.5lbs/ft) and M10: 16-18Nm (12-13lbs/ft).

Warning

- Check part number/ or kit is correct for use with your vehicle.
- Do not attempt to fit the rack system to your vehicle unless you fully understand these fitting instructions. Please direct any questions regarding fitting to the dealer from where the roof racks were purchased.
- Although the system is tested and approved to AS1235-2000 / ISO 11154, off-road conditions can be much more rigorous. Extreme care must be taken in off road conditions.
- Roof racks must be removed when vehicle is put through an automatic car wash.
- With utility vehicles, the cabin and the canopy move independently. Roofracks and vehicle can be damaged if the item transported is rigidly fixed at points on both the cabin and canopy. Instead, rigidly fix to either the cabin roof racks or the canopy roof racks.
- Always ensure you fasten your load securely.
- Use only non-stretch fastening ropes or straps to attach cargo to your load.

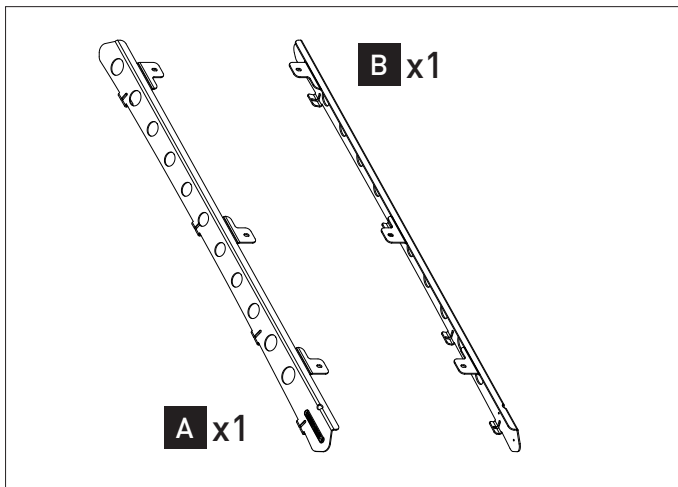
In service maintenance checks

- All bolt connections should be checked after driving a short distance when you first install your roof racks.
- All bolted connections should be checked again at regular intervals (weekly is recommended, depending on road conditions, usage, loads and distances travelled).
- All bolted connections should be checked each time they are re-fitted.

Note for Dealers and Fitters

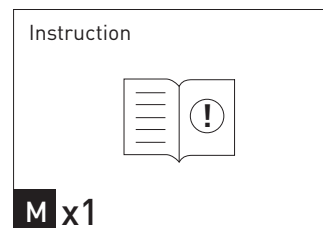
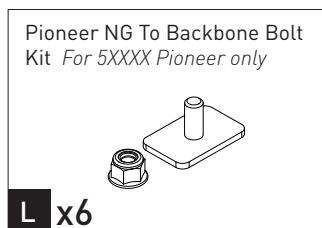
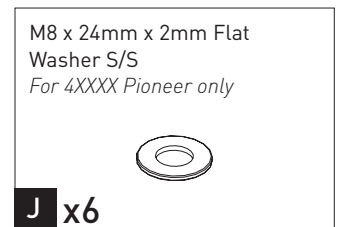
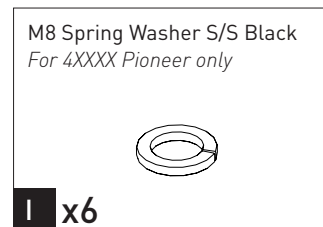
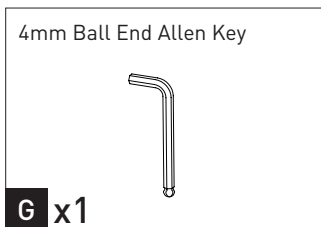
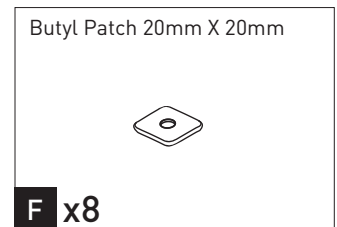
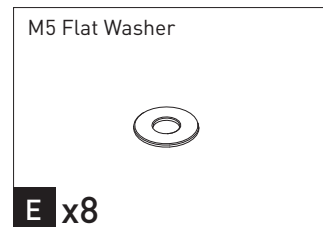
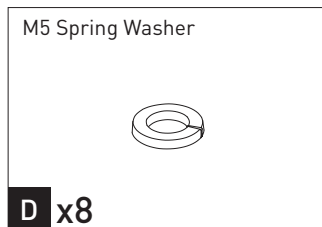
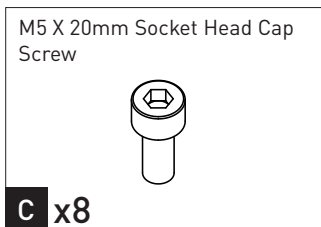
It is your responsibility to ensure these fitting instructions are given to the end user or client. These instructions remain the property of Rhino-Rack Australia Pty. Ltd. and may not be used or changed for any other purpose than intended.

Parts List



Tools Required:

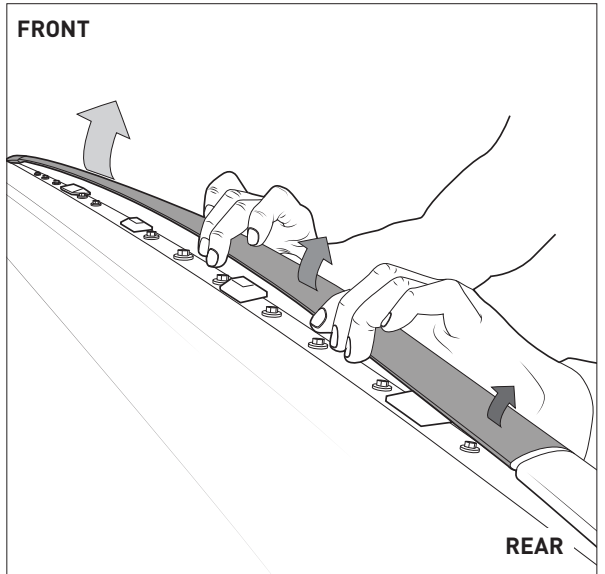
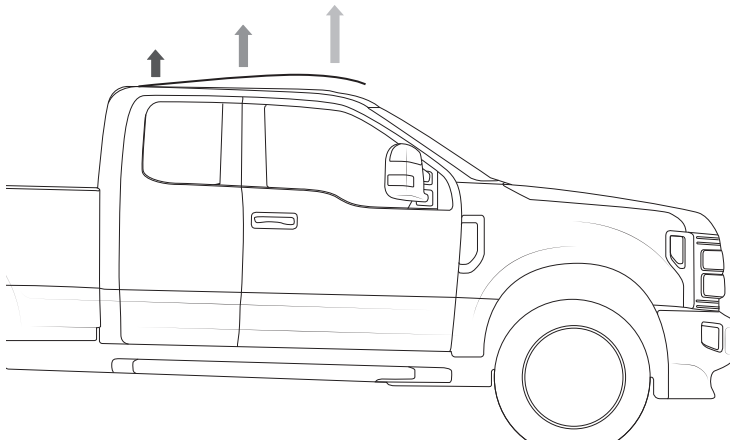
- T1 - 7mm (1/4") Socket Wrench
- T2 - Hammer
- T3 - Flat head Screwdriver
- T4 - Silicone
- T5 - 13mm (1/2") Wrench/Spanner



RF2B3 Instructions

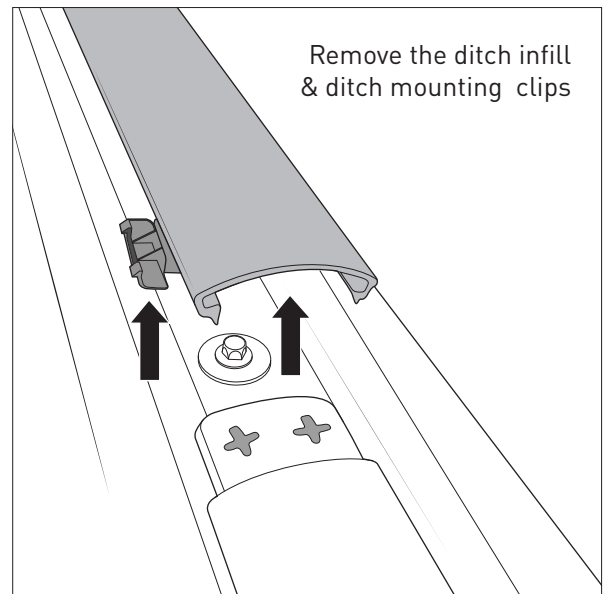
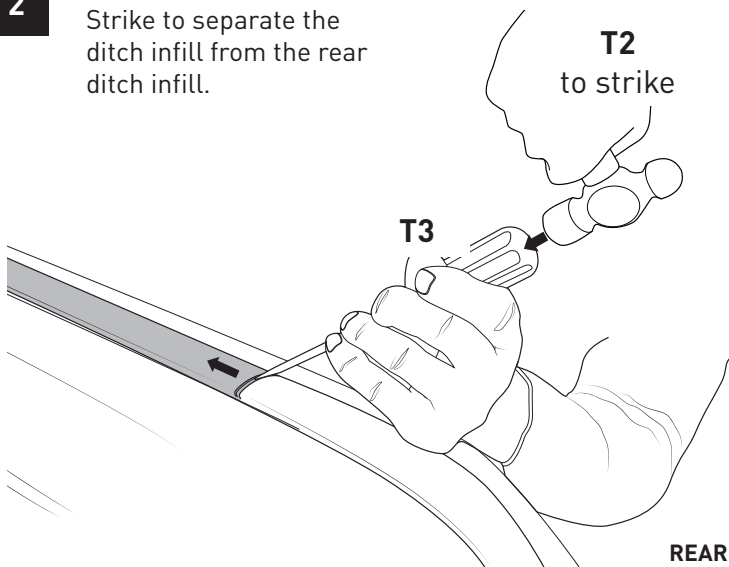
1

Carefully detach the ditch infill from the ditch clips beginning from the front of the vehicle



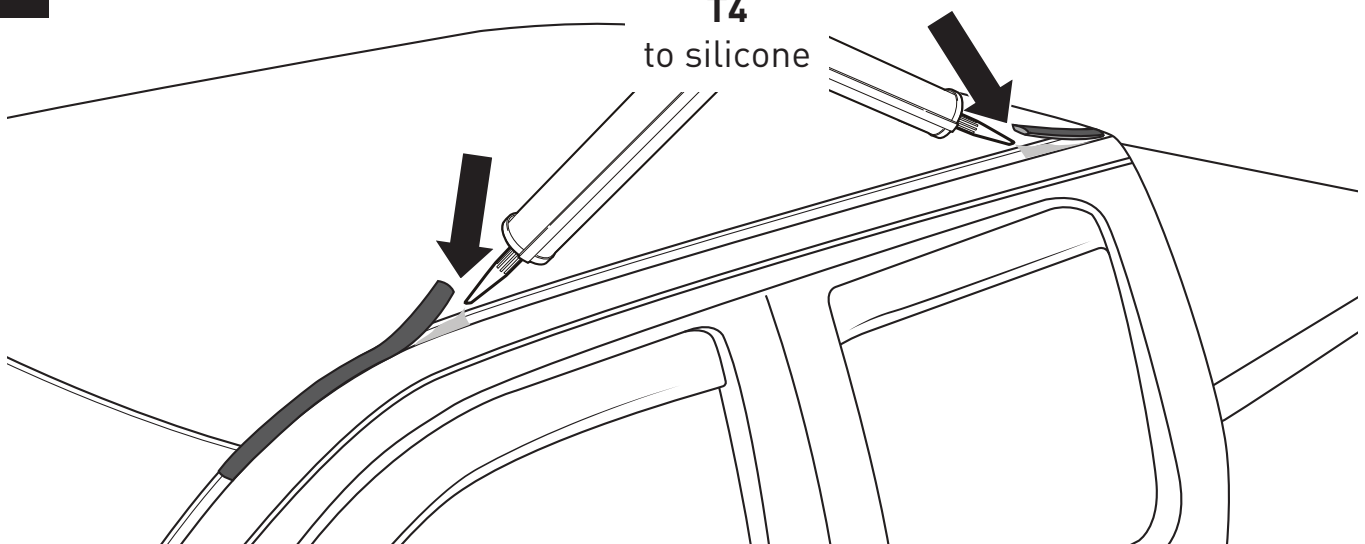
2

Strike to separate the ditch infill from the rear ditch infill.

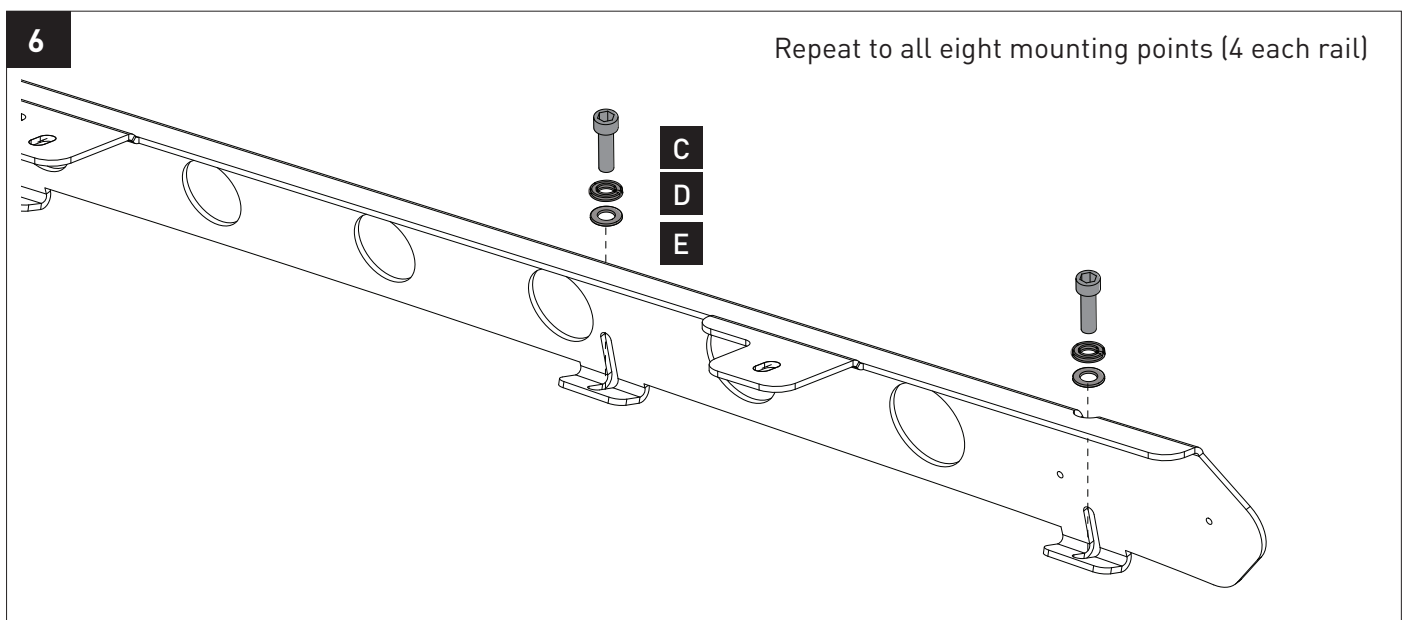
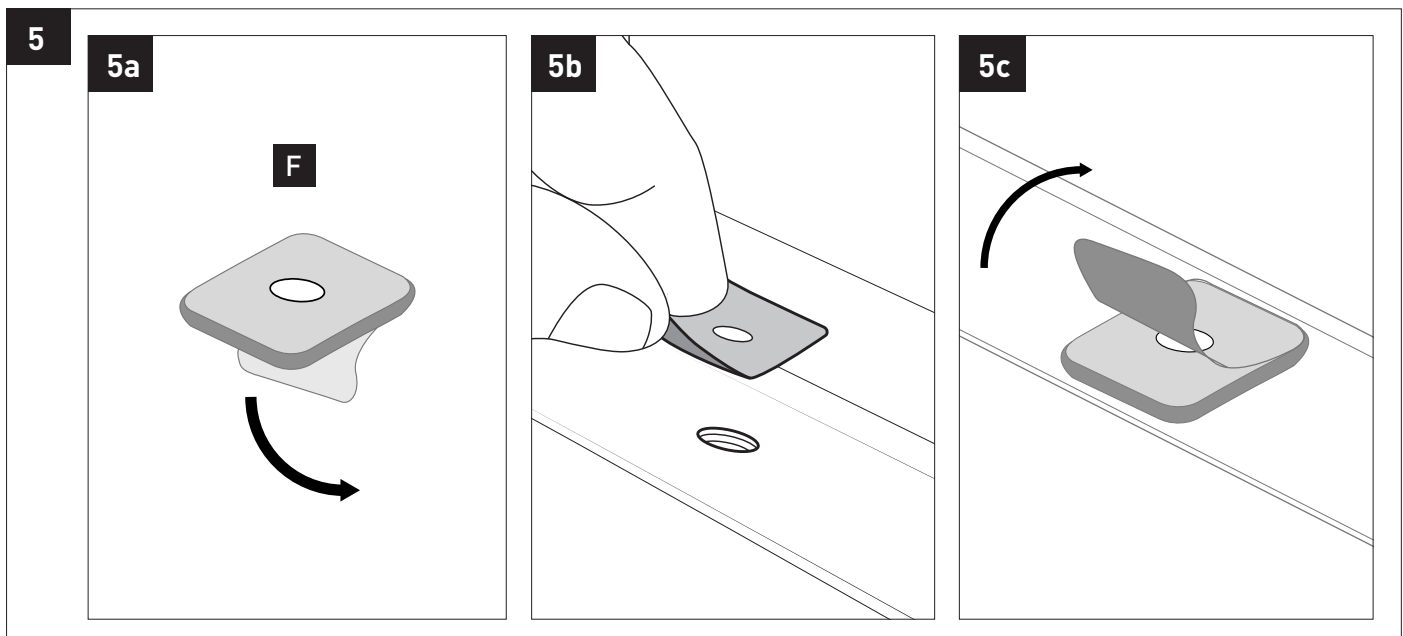
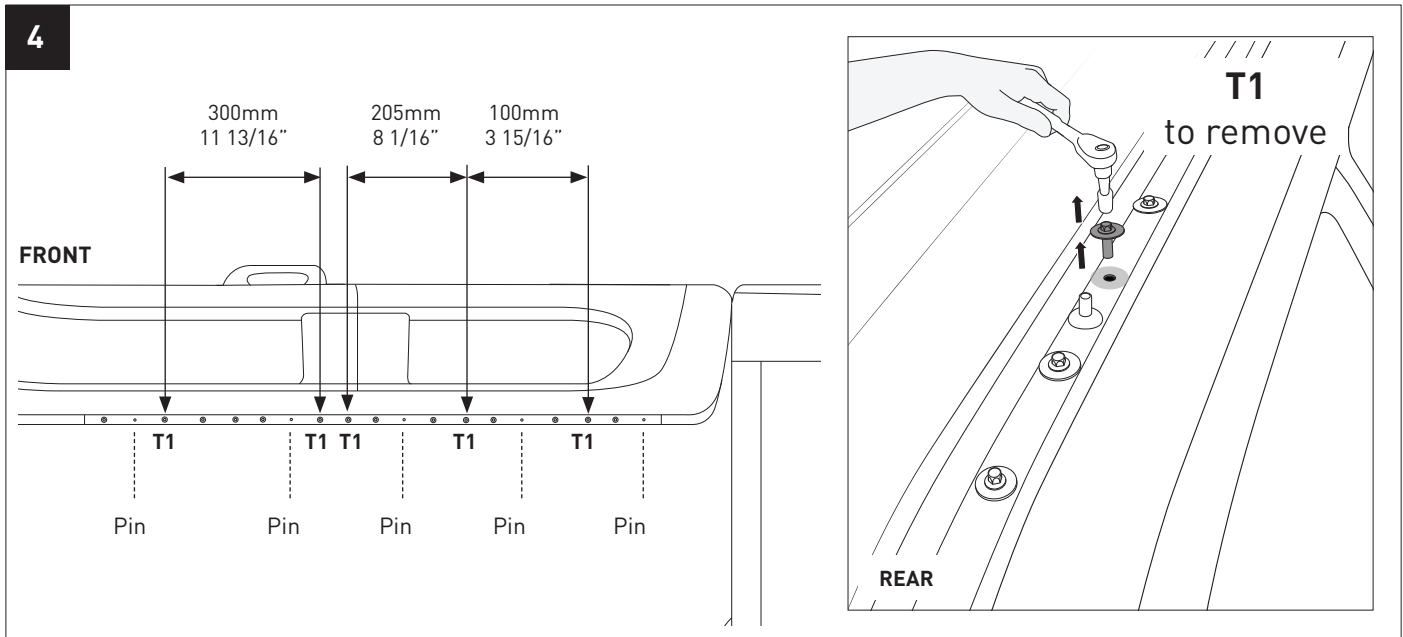


3

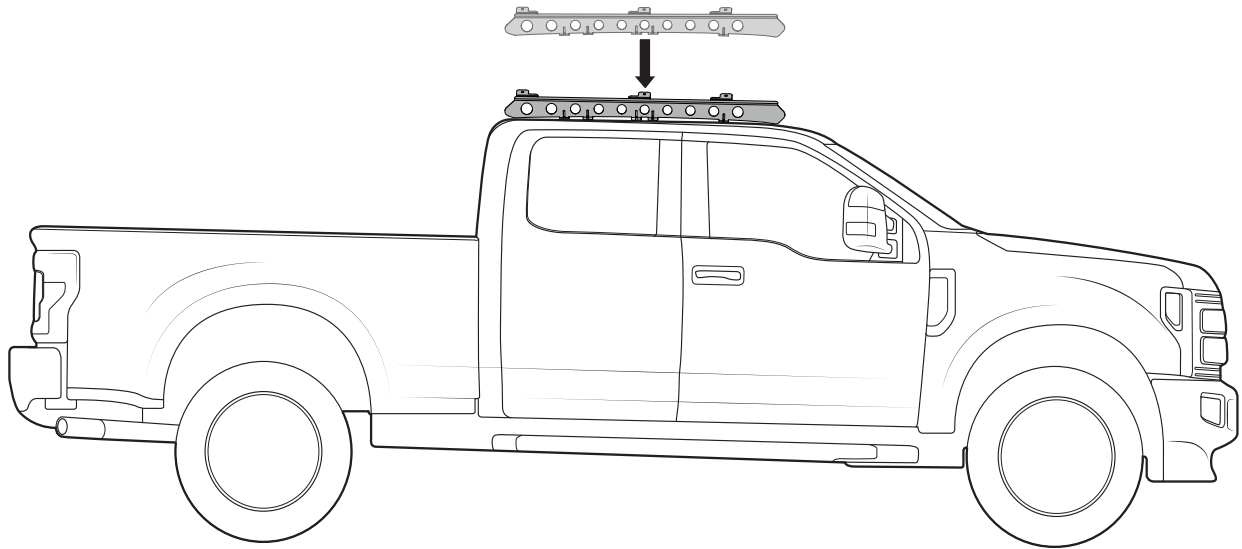
T4
to silicone



RF2B3 Instructions

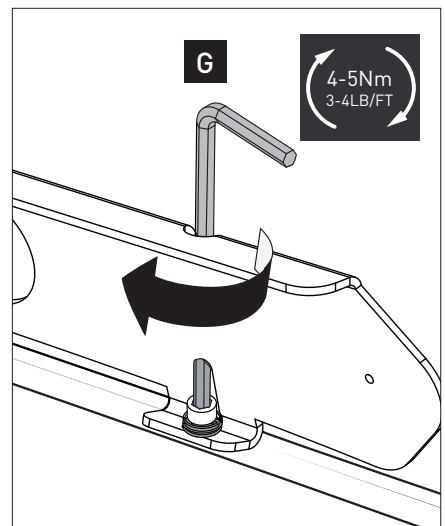
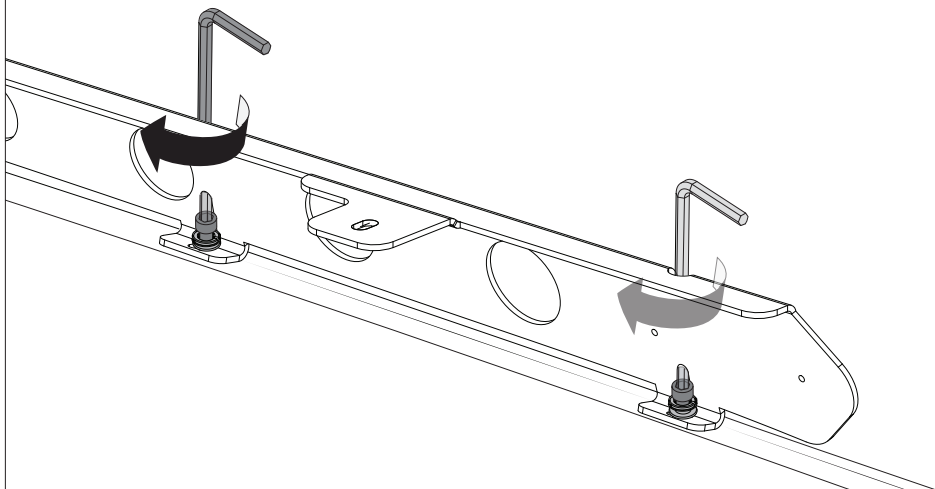


7



8

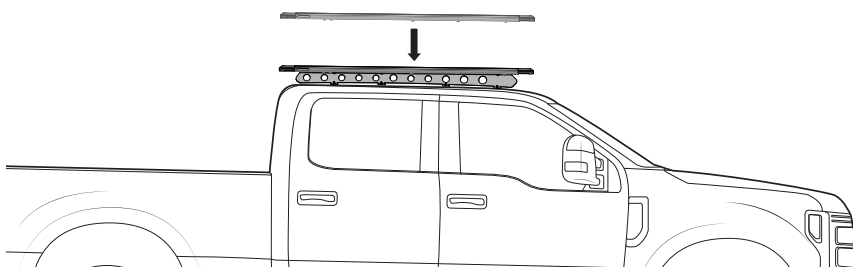
Rotate each screw along the backbone three turns at a time beginning from the front of the vehicle



G

4-5Nm
3-4LB/FT

9



Example

RHINO-RACK PIONEER NG - VEHICLE FITTING INFORMATION
S2101B / S2101BF

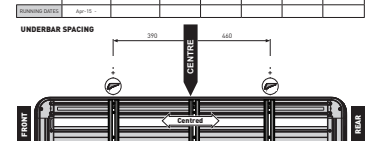
APPLICABLE VEHICLES

VEHICLE	CONNECTOR	IMPORTANT NOTES
2007-2014 Ford Super Duty / 2007-2014 Chevrolet Silverado 1500	RA-10001	

Vehicle Load Limit	System Weight	On-Road Cargo Allowance	Off-Road Cargo Allowance
100	10	90	80

REGIONS	AS	NZ	USA	CA	EU	SA	UK
Available From	Jan-15						

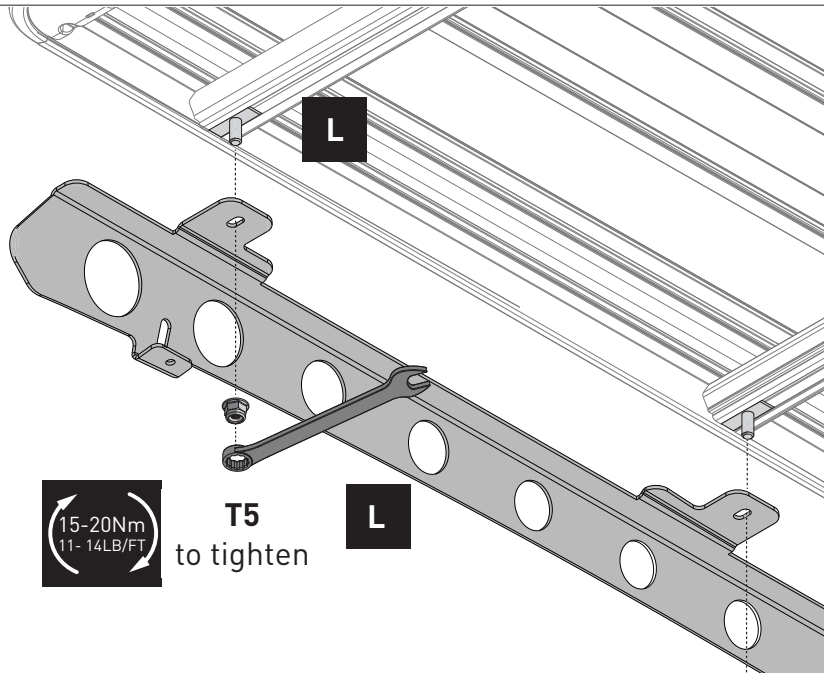
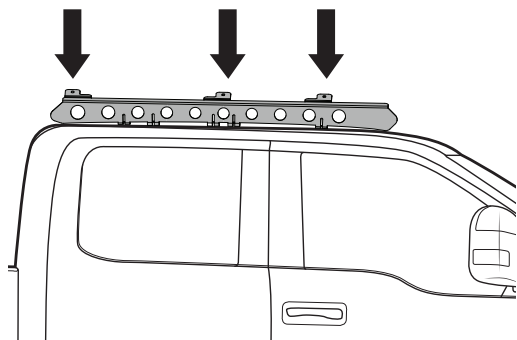
UNDERBAR SPACING



10

FOR 5XXXX PIONEER SERIES

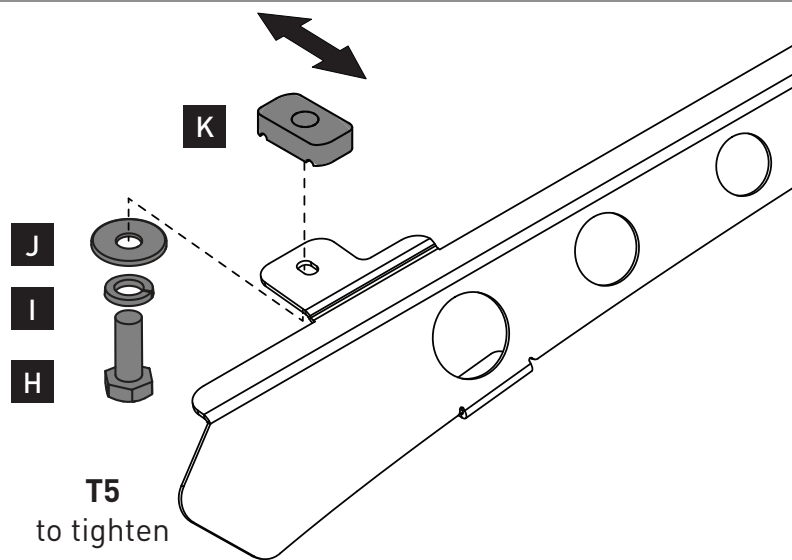
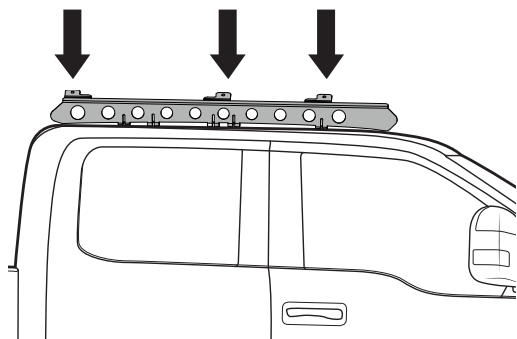
Repeat for the six tabs on top of the backbone rails (3 each rail).



11

FOR 4XXXX PIONEER SERIES

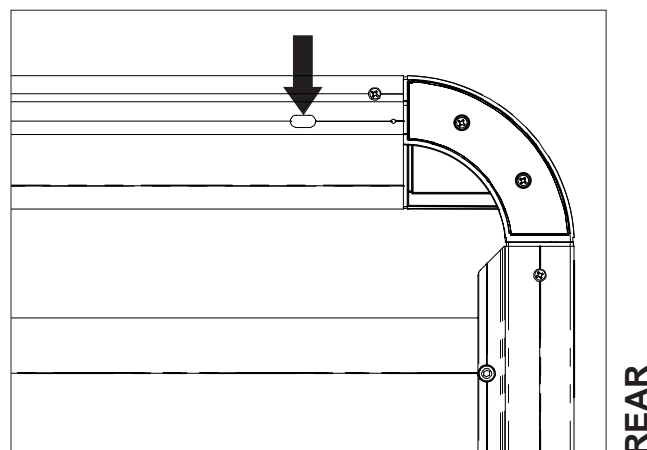
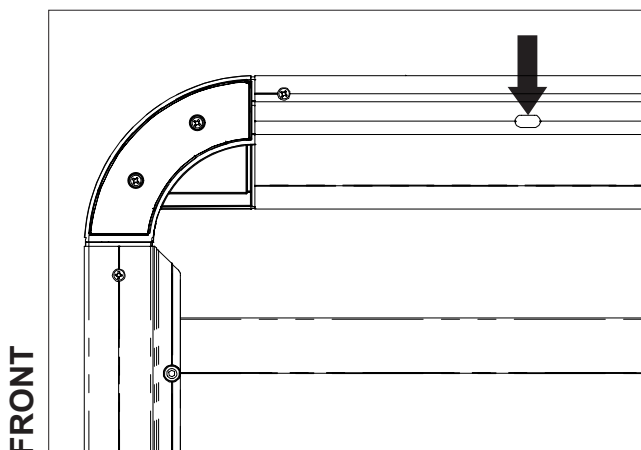
Repeat for the six tabs on top of the backbone rails (3 each rail).



12

FOR 4XXXX PIONEER SERIES

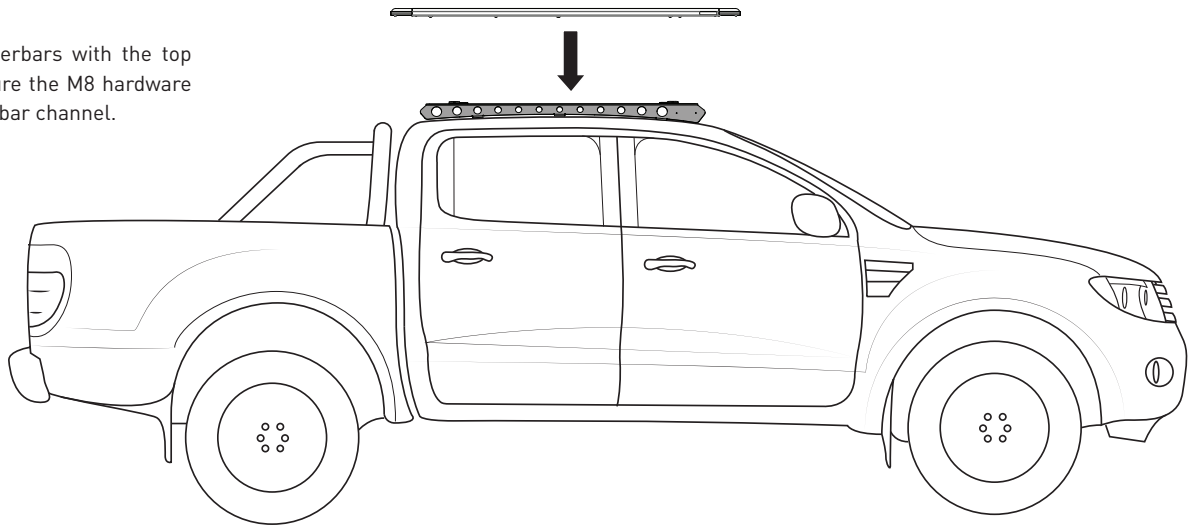
Install Pioneer underbars with slots indicated.



RF2B3 Instructions

13

Align the underbars with the top tabs and ensure the M8 hardware fits into underbar channel.



14

IMPORTANT

4XXXX - Ensure channel nut has rotated within Pioneer underbar and is fixing Pioneer securely.

