



# RHINO-RACK

## Rhino-Rack Wall Hanger (RWHL) & (RWHS)

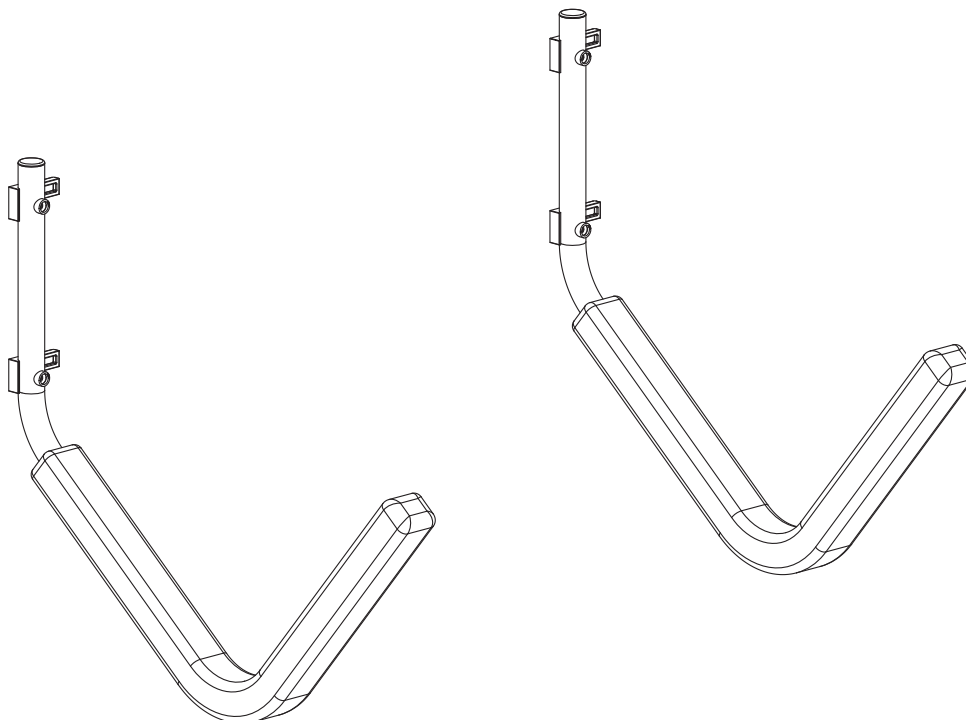
**Important:**

Please read these instructions carefully prior to installation.

Please refer to your fitting instruction to ensure that the [roof racks](#) are installed in the correct locations. Check the contents of kit before commencing fitment and report any discrepancies.

Place these instructions in the vehicle's glove box after installation is complete.

### Layout



### Important Information

**When selecting a suitable wall to mount this hanger, ensure the wall has enough strength to support the kayak or luggage box. Always fix to wall studs or use appropriate concrete/ brick inserts. Do not fix to dry wall only.**

**The steel tubes are electroplated and powdercoated for outdoor use. The padded cover is UV stabilised, however premature fading will occur outdoors compared to indoor use. Always support kayak or luggage box with both hangers supplied in this kit. Always use safety tether strap to avoid kayak/ luggage box from toppling.**

#### Recommendations

Do not climb or hang from the storage racks. It is only intended to store kayaks or luggage boxes, not people.

#### Load Ratings

The Kayak Wall Hanger's load capacity is 80kg. Ensure that appropriate fasteners are used to suit the wall type (i.e. brick wall, plasterboard, wood, etc)



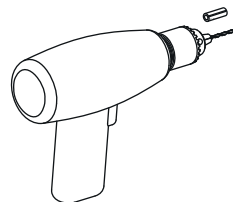
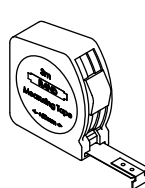
# Rhino-Rack Wall Hanger (RWHL) & (RWHS)

## General Parts List

Item	Component Name	Qty	Part No.
1	Wall Hanger Mount Bracket	4	M670
2	Wall Hanger Screw Bracket	4	M671
3	10g x 100mm countersunk screws	4	
4a	Wall Hanger (Large)	2	L
4b	Wall Hanger (Small)	2	S
5	5mm Allen Key	1	H002
6	Tie Down Strap	1	
7	Fitting Instruction	1	R331

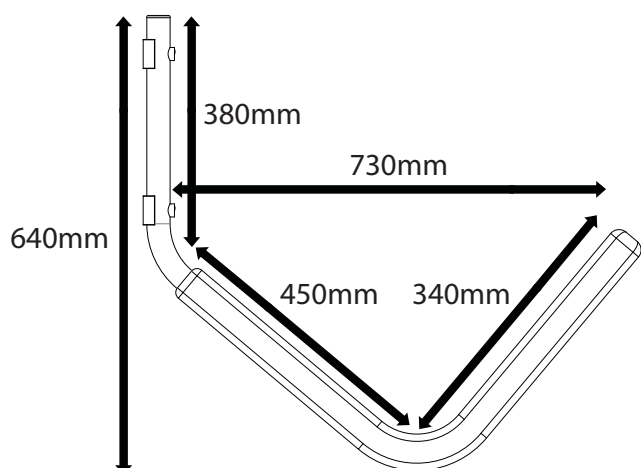
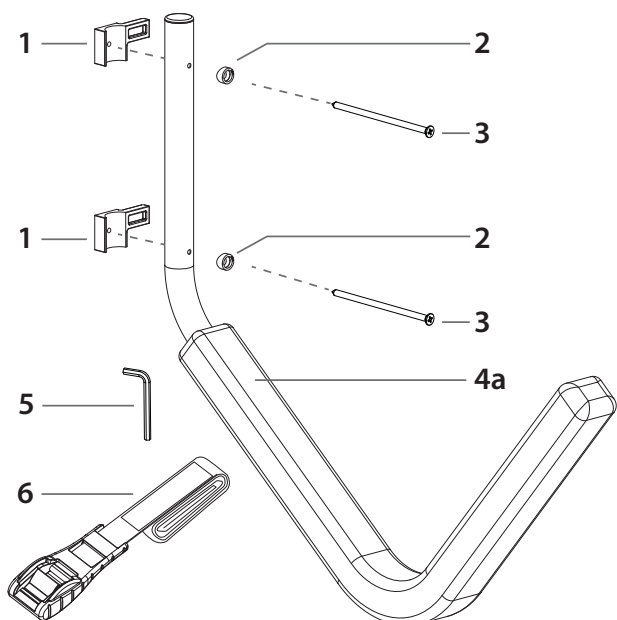
### Tools Required:

Tape measure, pencil/ pen, power drill (optional depending on wall type)



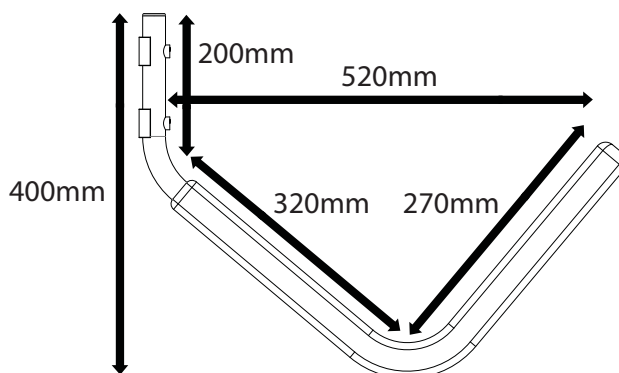
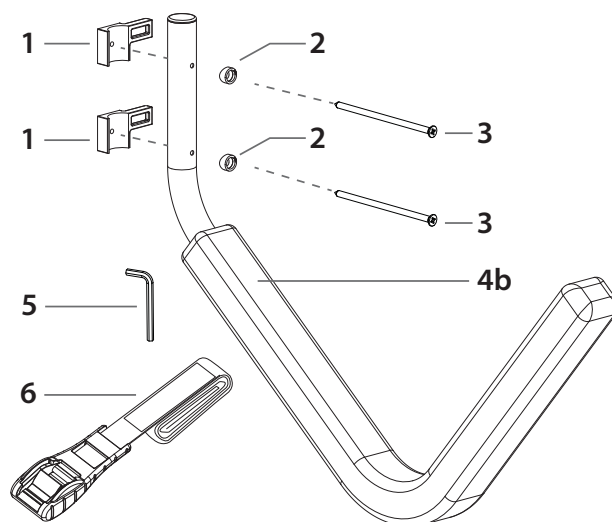
## RWHL

### Rhino-Rack Wall Hanger (LARGE)



## RWHS

### Rhino-Rack Wall Hanger (SMALL)

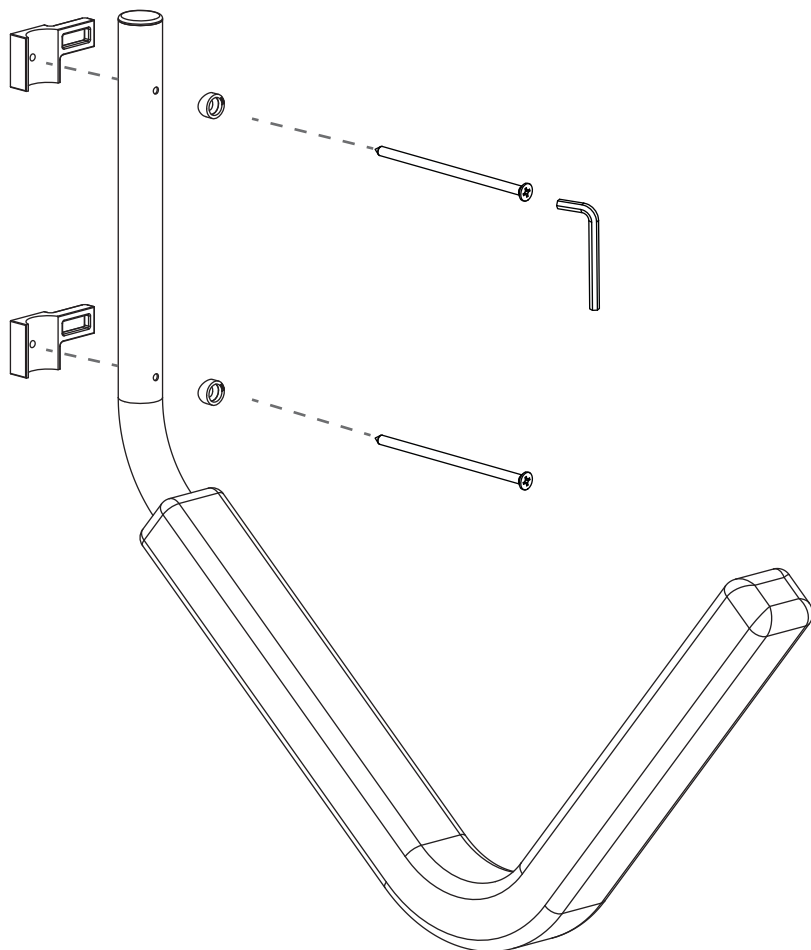




## Rhino-Rack Wall Hanger (RWHL) & (RWHS)

### Fitting Instruction

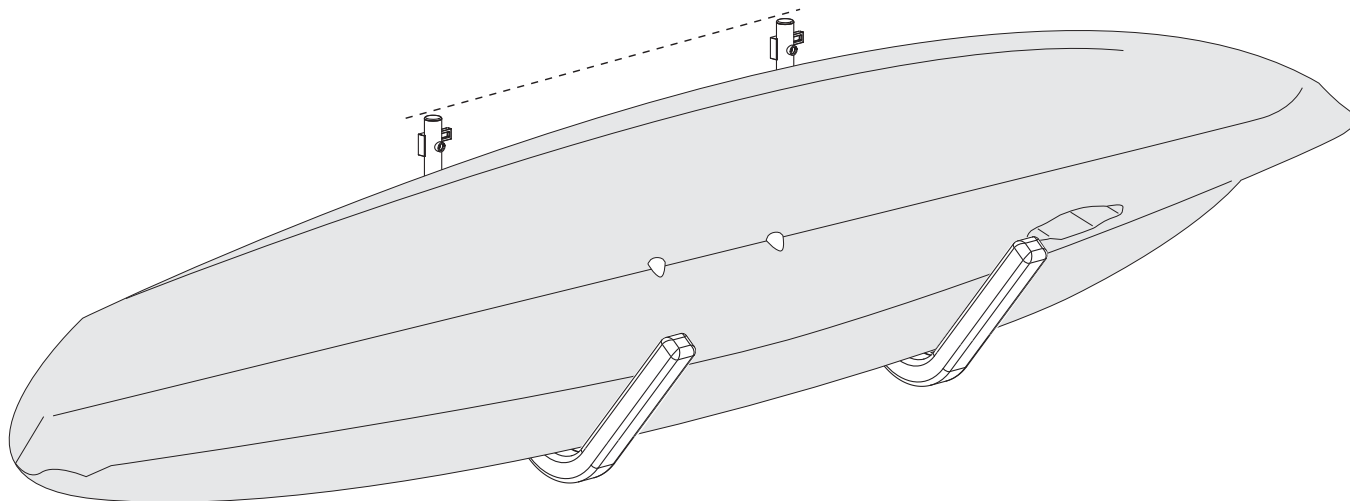
- 1 For timber walls, we have supplied the countersunk screws to mount the Kayak Wall Hanger onto the wall. Install as follow. For brick, plasterboard and other types of wall, please consult your local hardware store for the appropriate fasteners for this system. **RWHL system shown here.**



**Disclaimer:** The user/ installer assumes total responsibility for the proper installation and use of this product. Rhino -Rack will not be held liable for damages or injuries resulting from the installation and/ or use of this product. If the installer is unsure of the requirements, he/ she should contact the company from which it was purchased.

**Remember:** Stored items can fall, resulting in injuries and/ or damage when not properly installed or used.

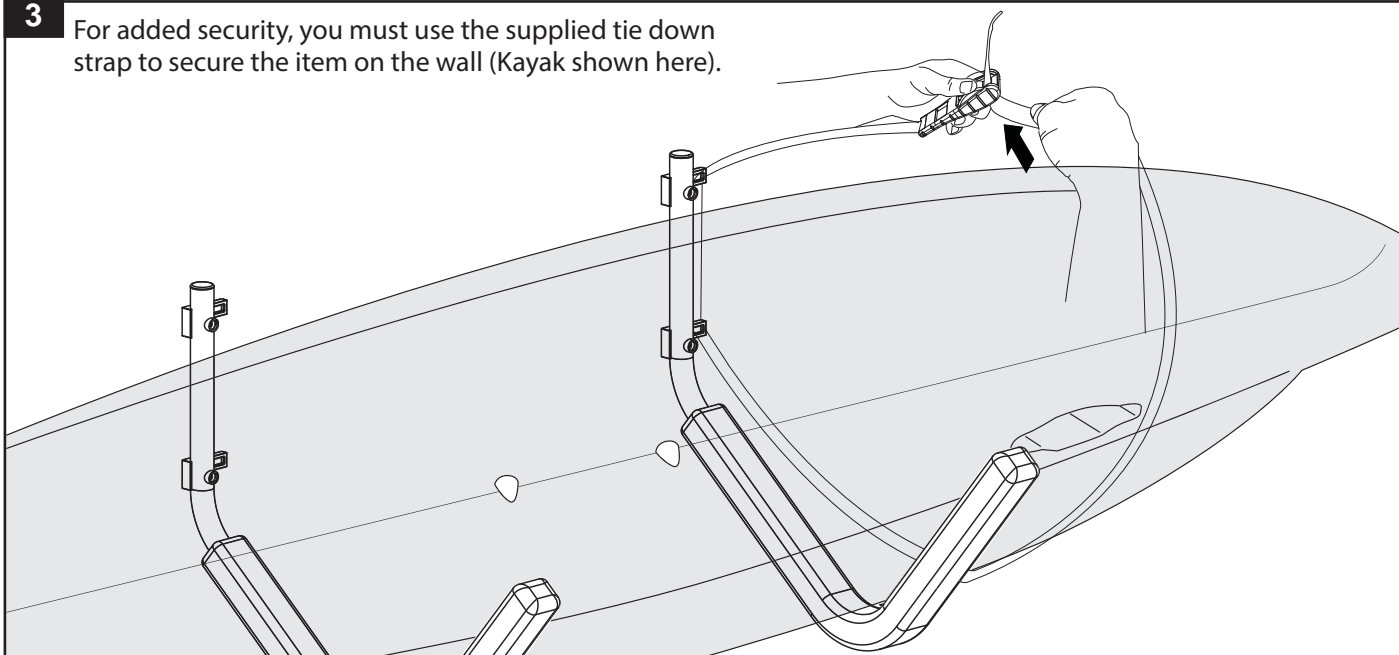
- 2 Ensure the hangers are installed straight. Check by taking measurements or using a spirit level.



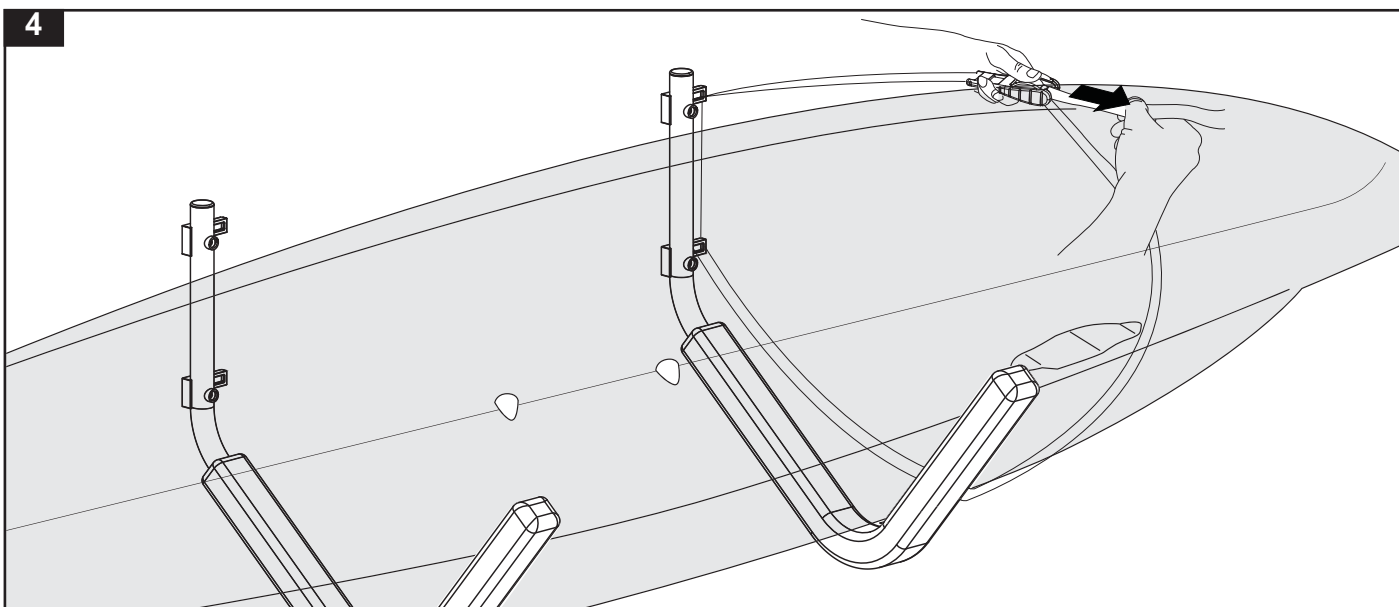


## Rhino-Rack Wall Hanger (RWHL) & (RWHS)

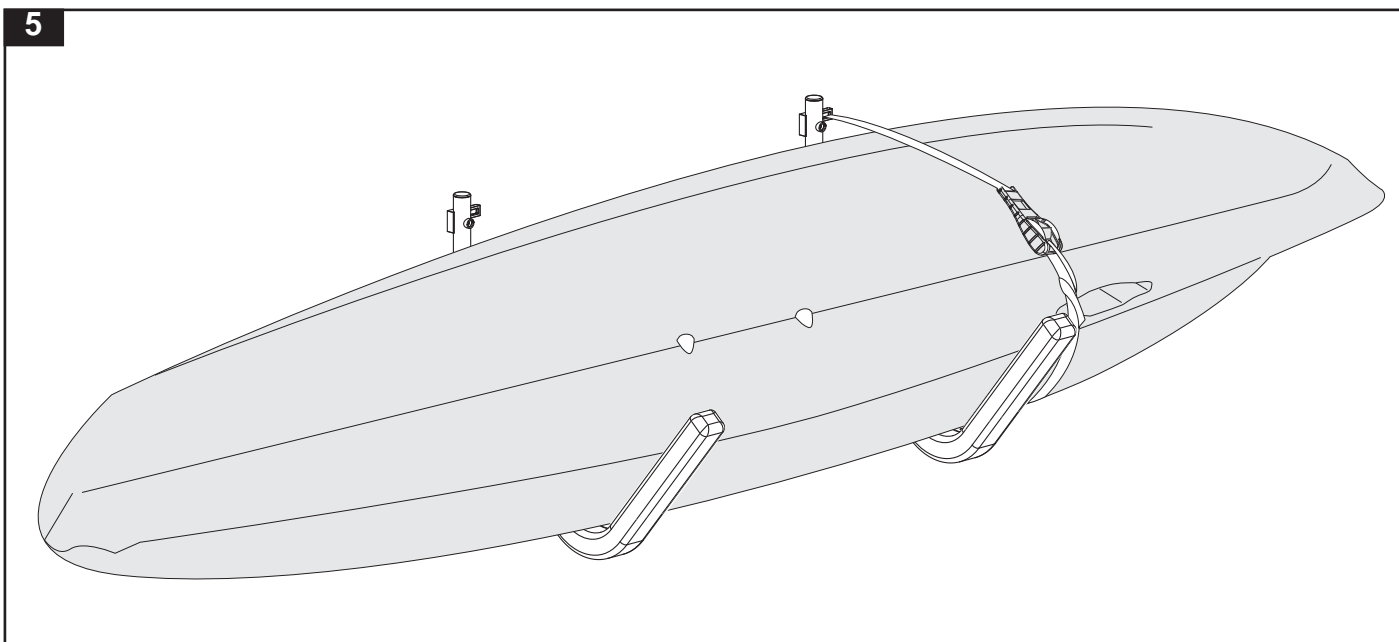
- 3** For added security, you must use the supplied tie down strap to secure the item on the wall (Kayak shown here).



**4**



**5**





## Rhino-Rack Wall Hanger (RWHL) & (RWHS)

- 6** Mounting a luggage box. For added security, you must use the supplied tie down strap to secure the item on the wall.

