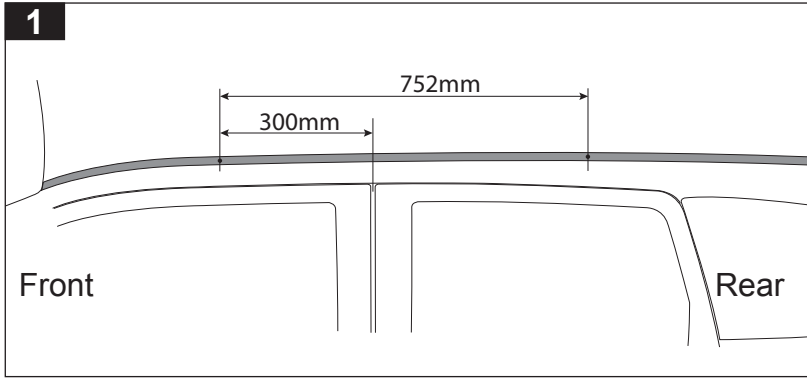




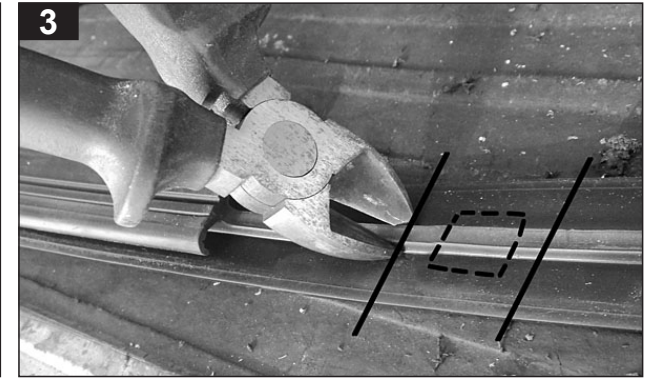
DK290 Rhino-Rack VA, DA, Euro & HD crossbar instruction



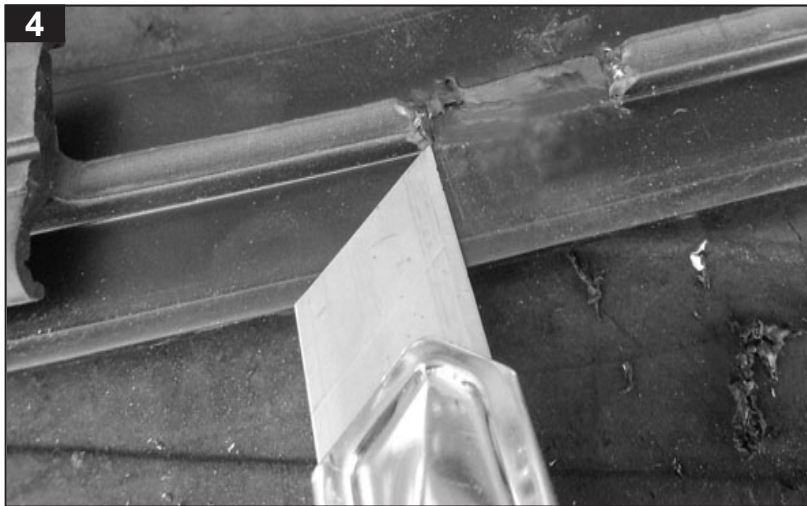
1 Roof ditch moulding requires holes to expose the roof rack fixing points. Mark points at measurements shown above.



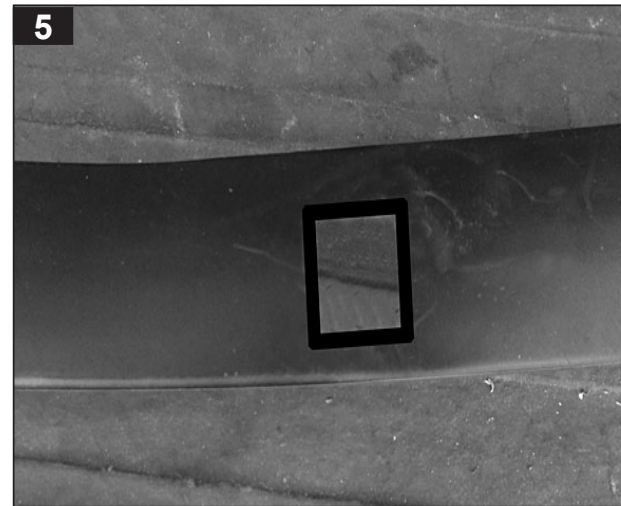
2 Front left hole position shown. Remove roof ditch mould.



3 Turn roof ditch mould upside down. The underside rib has metal inside. Use side cutters to cut either side of hole position.



4 Trim excess rubber.



5 Cut hole's in each roof ditch mould approximately 12mm square or with enough clearance to fit over the stud as shown in Step 6.



6 Re-install left & right roof ditch mould. Fasten all four studs.