

Driven to improve excellence.

Porsche Fire Extinguisher Mount - All Drivers seat Exp: Sport Adaptive & Side Mounted Seats 2005 - 997/987/Cayman

Check to make sure you that have all parts listed prior to installation. If anything is missing contact us immediately.

- (1) Aluminum Fire Extinguisher Mount
- (1) Steel Mounting Bracket
- (2) Aluminum Spacers

- (6) Button Head Cap Screws 10/32 X.5" - MC92949A265
- (2) Socket Head Cap Screws 10/32 X .5" - MC91251A342
- (2) Socket Head Cap Screws 10/32 X 2.25" - MC91251A354
- (10) Washers #10 - MC92141A011
- (6) Nyloc Nuts 10/32 - MC91831A411



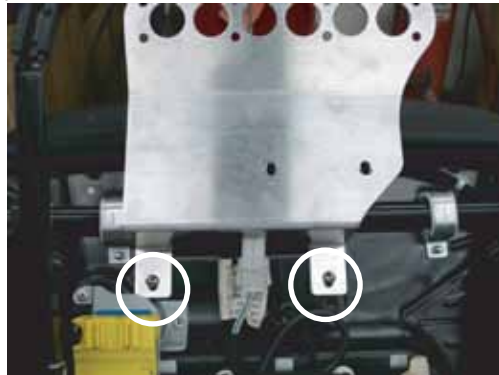
Step 1 - Remove drivers seat from car and position it so you can access seat bottom as shown.



Step 2 - Place the black mounting bracket between the seat springs and seat cushion as shown in the above photos. Slide the bracket up toward the front of the seat until the holes line up with the factory holes shown in step 3. To make this step easier wedge something between the cushion and springs to give you clearance to position the bracket.



Step 3 - Align bracket with these (4) holes. A small screw driver or punch will help you to position bracket.



Step 4 - Attach the 2 rear mounting points of the mount using the supplied .5" socket head cap screws and washers. Leave screws loose at this time.



Step 5 - Install the 2 front mounting points using the supplied spacers, 2.25" socket head cap screws and washers. See step 6 for spacer placement.



Step 6 - Tighten all bolts.



Step 7 - Install fire extinguisher bracket using the supplied (6) 10/32 button head screws, washers and nuts. This mount was designed for a standard Hal Guard bracket. If your mounting holes are different you may need to drill your bracket to properly fit. Note: Bracket placement and orientation will vary for power and manual seats.



Step 8- Install seat back into car and attach fire extinguisher.