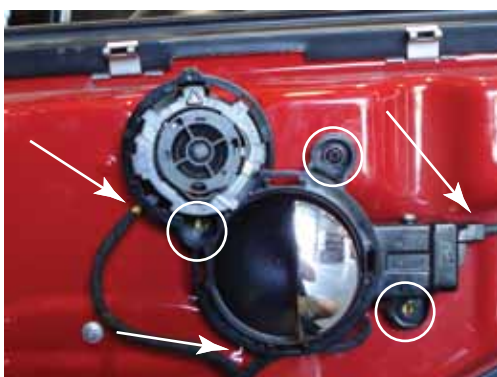
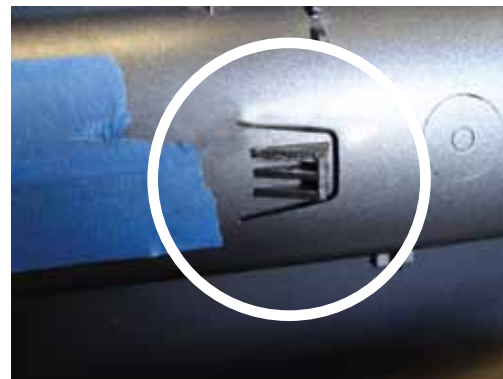
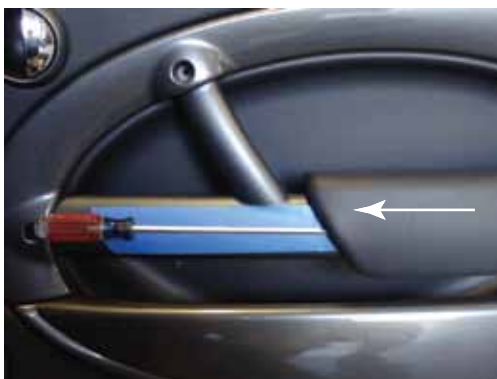


READ BEFORE INSTALLATION

The use of any Rennline product is the sole responsibility of the end user. Rennline Inc. accepts no responsibility for warranty voids or damage resulting from the use of these products. Due to the varying location of wiring harnesses and other components, carefully inspect any area prior to drilling. All Rennline products are intended for off road use only and should be installed by a qualified automotive technician.

Check to make sure you have all parts listed prior to installation. If anything is missing contact us immediately.

- (1) Left bracket
- (1) Right bracket
- (2) Handle covers
- (1) Drill templete
- (1) Drill bit .070
- (2) 2.5" X #8 S/S Screws MC 95639A384
- (2) 8-32 x 5/16" SS Button Head Screw MC92949A191
- (2) Handle Straps 5"
- (2) 00 Grommets MC86625K31



1. 2004.5-2006 cars have one of the mounting holes under the padded arm rest. To remove the armrest , protect the handle with tape and slide a thin screwdriver under the pad (photo 1) to release the tab shown in photo 2. Now slide the armrest toward the hinge side of the door to remove.
2. Pry off the handle bezel, reflector, and remove the 4 torn screws as shown in photo 3. Now remove the door card by simply pulling it off. You may need to insert a screw driver at the bottom to get it started.
3. Remove the (3) screws, (2) wire clips and the cable from the handle as shown in photo 4.
4. Remove the pin shown in photo 5 and then remove the factory door pull and spring. You will not use these again.
5. Place the drill templete over the back of the handle as shown in photo 6. Drill the hole with the supplied bit.
6. Insert the Rennline door handle bracket the same way you took out the factory unit using the factory pin. Note: There is a left and a right side bracket.
7. Attach the Rennline door strap to the bracket using the supplied button head screws. It may be necessary to spread the bracket a bit so that the pull swivels when it is tight.
8. Re-install the door handle assembly as shown in photo 4. At this time test the door handle by shutting the door , turn on the key, lock and unlock the doors , and open the door using the pull strap. Do this a few times to confirm everything is working properly before reassembling the door.
9. Reassemble the door
10. Install the Rennline handle cover using the supplied screw. This screw will thread into the hole you drilled in photo 6.
11. Enjoy your new Rennline product.