

INSTALLATION SHOWN FOR THE 58058 OR 30035 RAILS

Equipment Required:

Fastener Kit: 50085F

Wrenches: 3/4", 15/16"

Drill Bits: 1/8" & 9/16", 1-1/8" Hole Saw (10-Bolt)

1/8", 11/16", 1-1/8" Hole Saw (4-Bolt)

Other Tools: Center Punch, Measuring Tape

WARNING: Under no circumstances do we recommend exceeding the towing vehicle manufacturers recommended vehicle towing capacity.

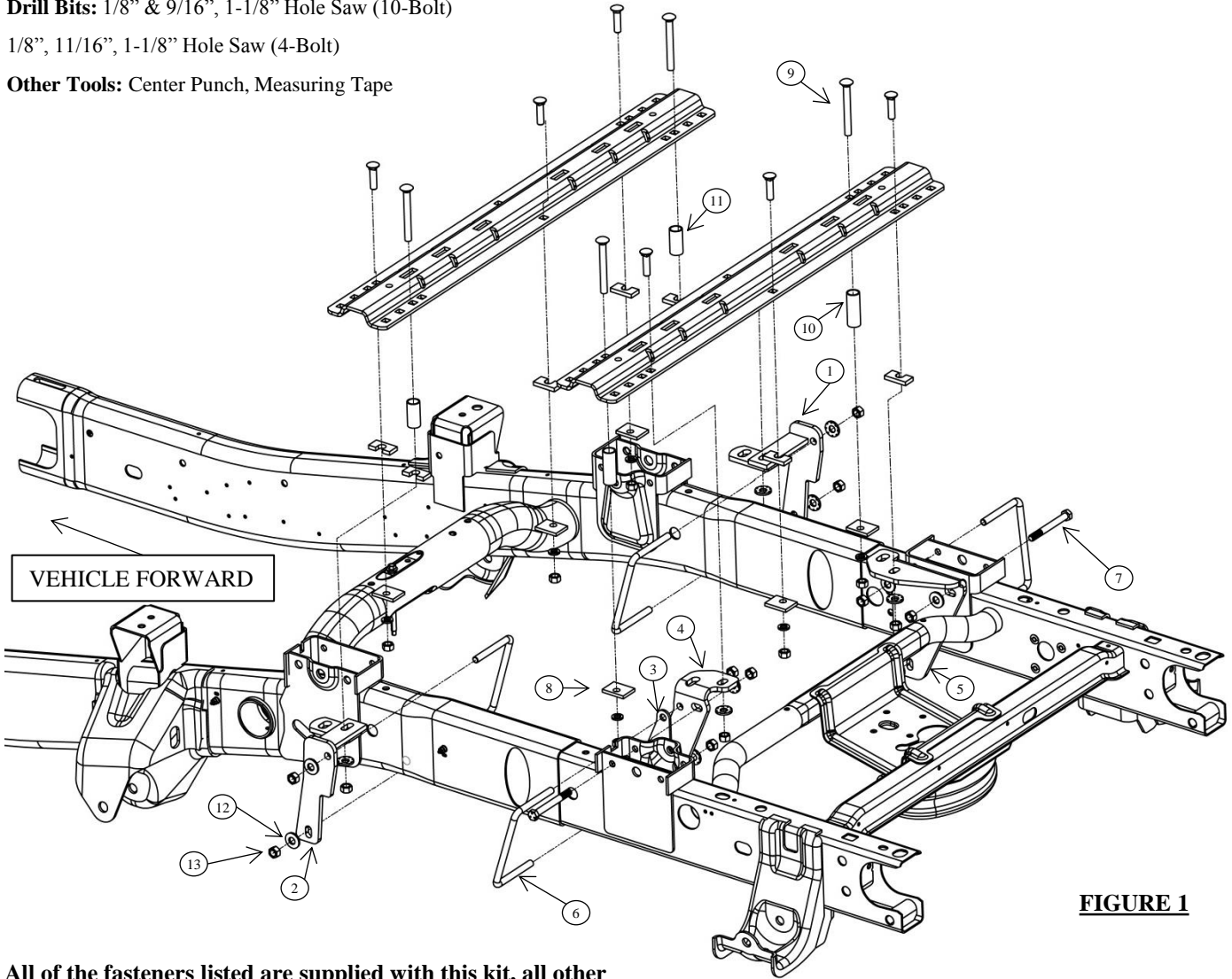


FIGURE 1

All of the fasteners listed are supplied with this kit, all other mentioned fasteners are supplied with rail kit 58058

ITEM	DESCRIPTION	QUANTITY	ITEM	DESCRIPTION	QUANTITY
1	PASSENGER FRONT BRACKET	1	8	BLOCK, .25" X 1.5" X 2"	6
2	DRIVER FRONT BRACKET	1	9	CARRIAGE BOLT, 1/2-13 X 4-1/2" GR 5	4
3	DRIVER REAR SPACER PLATE	1	10	TUBE SPACER, 2-3/4"	2
4	DRIVER REAR BRACKET	1	11	TUBE SPACER, 2"	2
5	PASSENGER REAR BRACKET	1	12	CONICAL WASHER, 1/2"	10
6	U-BOLT, 1/2 - 13 x 4-3/8" GR 5	4	13	HEX NUT, 1/2-13 GR 5	10
7	BOLT, 1/2-13 X 5" GR 5	2			

**FOR
INSTALLATION
OF 58058 OR 30035
RAIL KITS**

**Installation Instructions
CUSTOM QUICK INSTALL
MOUNTING KIT**

**Part Numbers:
50085**

Ram 3500

1. Do not install mounting rails over plastic bed liners. Plastic bed liners must be cut out of the way to provide metal to metal contact. Mounting rails may be installed on spray in liners.
2. Use only bolts, nuts, and washers supplied to install this kit. All bolts & nuts are Grade 5 unless otherwise specified.
3. These instructions are guidelines only, actual installation is the responsibility of the installer and the owner. Always measure truck and trailer before installing hitch to be sure that there is clearance at the cab and at the bumper to allow for turns.
4. Lower and remove spare tire if extra room is needed. If required, remove inner plastic wheel well liner and detach the exhaust hangers to allow access to frame.
5. Detach the clips which fasten the electrical wire loom and brake lines to the inboard driver side of the frame.
6. Place the rear mounting rail in the box of the truck, using your tape measure, center the rail between the weld seams on the length of the truck box floor and the proper distance from the rear edge of the truck box as shown in Figure 2.

Note: It is critical that rail is centered side to side on the truck bed.

7. Mark and center punch the holes as shown in Figure 2 (Rows 1 & 2). Remove the rail and drill each position with a 1/8" drill bit.
8. Temporarily position the frame brackets on the frame and check that the 1/8" drilled holes align with the slots of the frame bracket (See Figure 1). Remove the frame brackets from the vehicle.
9. Enlarge the 1/8" drilled holes to 9/16".
10. Use a 1-1/8" hole saw to enlarge the bed holes for the tube spacers (10)(11) in row 2 and 3.

Note: Only use the hole saw to cut through the bed and not the bed support. The tube spacers in row 2 should align with the center of the bed support for mounting.

11. Loosely install the frame brackets and spacer plate (front (1)(2) & rear (3)(4)(5)) by attaching the U- bolts (6), conical washers (12) and hex nuts (13) (See Figure 1). (**Note: Make certain that wires and brake lines are not between brackets/U-bolt and frame.**)
12. Move rear mounting rail into position. Install the 1/2-13 x 2" carriage bolts that are supplied with the rails with the block spacer to be located in the corrugation between the box and the mounting rail or between the box and rear brackets (4) (5), through the rail and rear brackets (4) (5). (**Note: the block spacer is to eliminate crushing bed corrugation.**) Attach .25" x 1.5" x 2" block (8), 1/2" conical washers and 1/2" nut to the underside of the brackets per the illustrations and tighten snug to keep the mounting rail from moving. (For Row 1)
13. The carriage bolts on the forward side of the rear rail's (row 2) and the center of the rail in row 1 will fasten directly through bed/bed support. Attach the 1/2" carriage bolts with .25"x1.5"x 2" block (8), 1/2" lock washer, and 1/2 - 13 hex nut under the bed/bed support.
14. Place the unassembled 5th wheel saddles/slider/goose into the already installed mounting rail. Position the front mounting rail with the saddles/slider/goose by inserting the tabs into the mounting rail and pushing the mounting rail tight towards the other mounting rail. Ensure that the mounting rail is centered between the weld seams on the length of the truck box floor. This will position the mounting rail in the correct location and ensure that the 5th wheel will have a snug fit to the truck. NOTE: If more than one hitch product will be used with the rails then both should be used at the same time to align the second rail. This will ensure that one product does not compromise the fit of the other.
15. Repeat steps 8 through 10.
16. Move the mounting rail into position. Install the 1/2-13 x 2" carriage bolts with the block spacer to be located in the corrugation between the box and the mounting rail or between the box and front brackets (1) (2). (**Note: the block spacer is to eliminate crushing bed corrugation.**) The rear end of the front brackets (Row 3) will be attached using the .25" x 1.5" x 2" block (8), 1/2" lock washers and 1/2" hex nut as described in step 12 and shown in Figure 1. Attach the forward side of the front brackets (Row 4) with spacers, washers and nuts per the illustrations and tighten snug to keep the mounting rail from moving.
17. After fully installing the 50085 custom mounting brackets, tighten the fasteners in the following sequence. **Note: Torque all 1/2" hardware to 75 ft-lbs (102 N*M). First torque the mounting rails to the frame brackets and then torque the frame brackets to the truck frame.**
18. Reattach the electrical wire loom and brake lines to the frame. Use the supplied cable tie, if necessary. Reattached the exhaust hangers. If removed, reinstall spare tire and plastic inner wheel well liner.

Installation Instructions

Part Numbers:

CUSTOM QUICK INSTALL MOUNTING KIT

50085

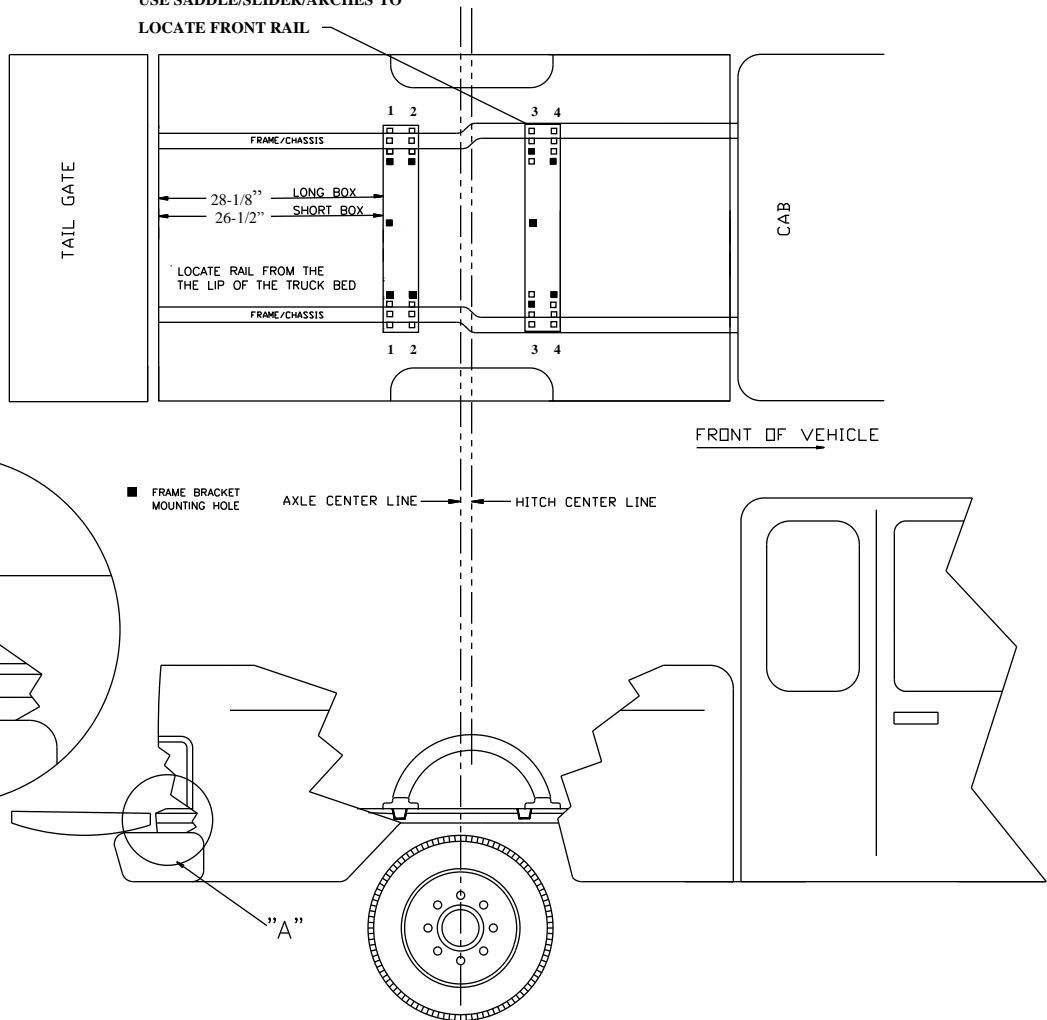
Ram 3500

Figure 2

Position the Rail

RAILS 58058 OR 30035 ONLY

USE SADDLE/SLIDER/ARCHES TO
LOCATE FRONT RAIL



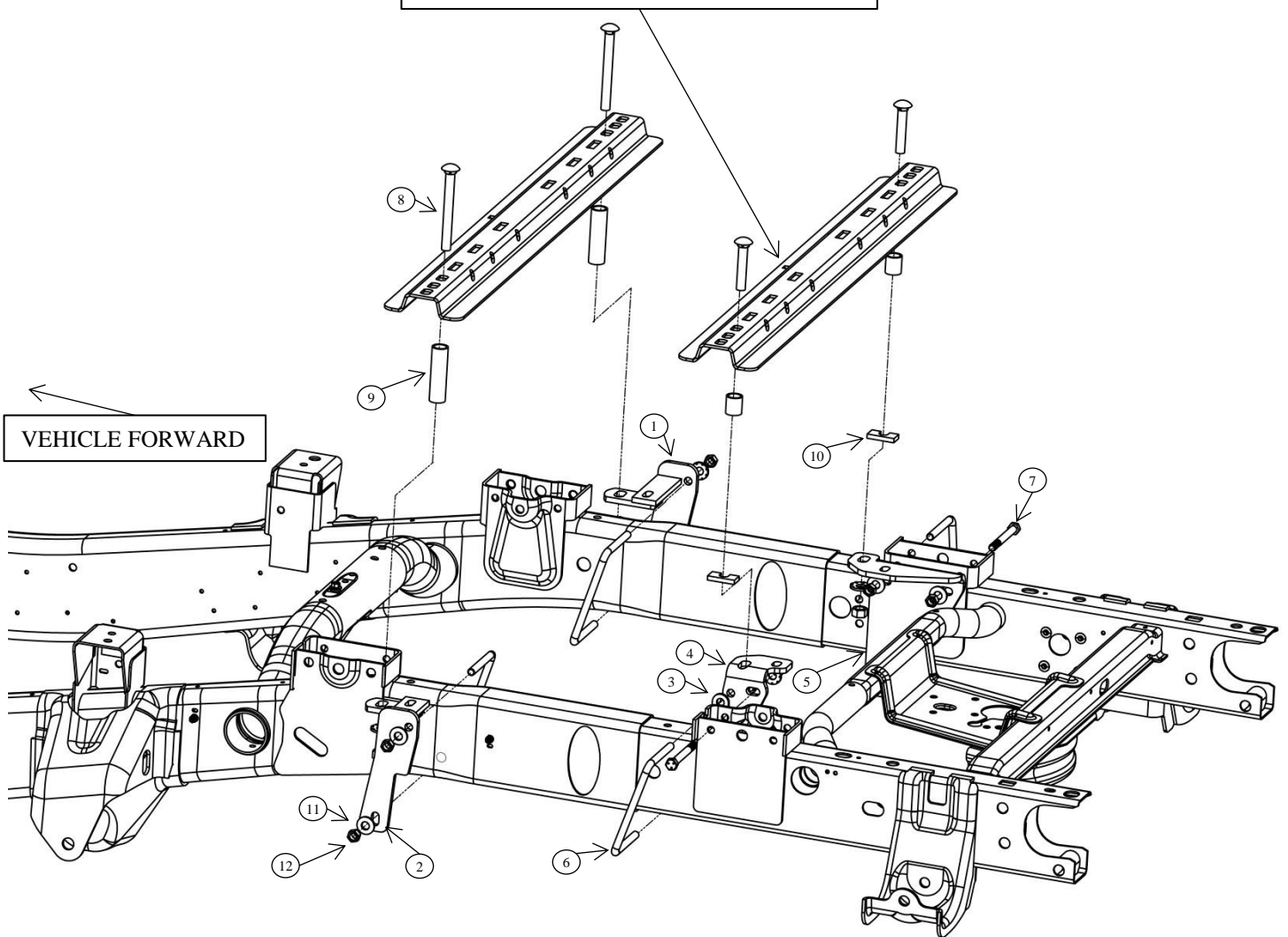
FOR RAILS 58058 OR 30035 ONLY

INSTALLATION SHOWN FOR THE 30124 OR 30095 RAILS

Figure 3

CENTER BOLTS AND HARDWARE ARE SUPPLIED WITH FIFTH WHEEL OR GOOSENECK HITCHES THAT ARE RATED OVER 18K

All Fasteners Typical On All Brackets



All of the fasteners listed are supplied with this kit, all other mentioned fasteners are supplied with rail kit 30124

ITEM	DESCRIPTION	QUANTITY	ITEM	DESCRIPTION	QUANTITY
1	PASSENGER FRONT BRACKET	1	7	BOLT, 1/2-13 X 5" GR 5	2
2	DRIVER FRONT BRACKET	1	8	CARRIAGE BOLT, 5/8-11 X 6" GR 5	2
3	DRIVER REAR SPACER PLATE	1	9	TUBE SPACER, 4"	2
4	DRIVER REAR BRACKET	1	10	BLOCK, .313" X 2" X 1"	2
5	PASSENGER REAR BRACKET	1	11	CONICAL WASHER, 1/2"	10
6	U-BOLT, 1/2-13 x 4-3/8" GR 5	4	12	HEX NUT, 1/2-13 GR 5	10

**FOR
INSTALLATION OF
30124 OR 30095
RAIL KITS**

**Installation Instructions
CUSTOM QUICK INSTALL
MOUNTING KIT
Ram 3500**

Part Numbers:
50085

1. Do not install mounting rails over plastic bed liners. Plastic bed liners must be cut out of the way to provide metal to metal contact. Mounting rails may be installed on spray in liners.
2. Use only bolts, nuts, and washers supplied to install this kit. All bolts & nuts are Grade 5 unless otherwise specified.
3. These instructions are guidelines only, actual installation is the responsibility of the installer and the owner. Always measure truck and trailer before installing hitch to be sure that there is clearance at the cab and at the bumper to allow for turns.
4. Lower and remove spare tire if extra room is needed. If required, remove inner plastic wheel well liner and detach the exhaust hangers to allow access to frame.
5. Detach the clips which fasten the electrical wire loom and brake lines to the inboard driver side of the frame.
6. Place the rear mounting rail in the box of the truck, using your tape measure, center the rail between the weld seams on the length of the truck box floor and the proper distance from the rear edge of the truck box as shown in Figure 4.
Note: It is critical that rail is centered side to side on the truck bed.
7. Mark and center punch the holes as shown in Figure 4. Remove the rail and drill each position with a 1/8" drill bit.
8. Temporarily position the frame brackets on the frame and check that the 1/8" drilled holes align with the slots in the frame bracket (See Figure 1). Remove the frame brackets from the vehicle.
9. Enlarge the 1/8" drilled holes to 1 1/8".
Note: Only use the hole saw to cut through the bed and not the bed support.
10. Loosely install the frame brackets and spacer plate (front (1)(2) & rear (3)(4)(5)) by attaching the U-bolts (6), conical washers (11) and hex nuts (12). (See Figure 3) (**Note: Make certain that wires and brake lines are not between brackets/U-bolt and frame.**)
11. Move rear mounting rail into position. Install the 5/8-11 x 3" carriage bolts that are supplied with the tube spacer along with the block spacer to be located in the corrugation between the box and the mounting rail or between the box and rear brackets (4) (5), through the rail and rear brackets (4) (5). (**Note the block spacer is to eliminate crushing bed corrugation.**) Attach 5/8" conical washers and 5/8" nut to the underside of the brackets per the illustrations and tighten snug to keep the mounting rail from moving.
12. Place the unassembled 5th wheel support arches/slider/goose into the already installed mounting rail. Position the forward mounting rail with the support arches/slider/goose by inserting the tabs into the mounting rail and pushing the mounting rail tight towards the other mounting rail. Ensure that the mounting rail is centered on the bed of the vehicle. This will position the rail in the correct location and ensure that the 5th wheel will have a snug fit to the truck. **Note:** If more than one hitch product will be used with the mounting rails then both types should be used at the same time to align the rearward mounting rail. This will ensure that one product does not compromise the fit of the other.
13. Repeat steps 8 through 10.
14. Move the mounting rail into position. Install the 5/8-11 x 6" carriage bolts (8) with the 4" tube spacer through the rails and into the front brackets (1) (2) Attach 5/8" conical washers and 5/8" nut to the underside of the brackets per the illustrations and tighten snug to keep the mounting rail from moving.
15. After fully installing the 50085 custom mounting brackets, tighten the fasteners in the following sequence. **Note: Torque all 5/8" hardware to 150 ft-lbs (204 N*M) and all 1/2" hardware to 75 ft-lbs (102 N*M). First torque the mounting rails to the frame brackets and then torque the frame brackets to the truck frame.**
16. Reattach the electrical wire loom and brake lines to the frame. Use the supplied cable tie, if necessary. Reattach the exhaust hangers. If removed, reinstall spare tire and inner plastic wheel well liner.

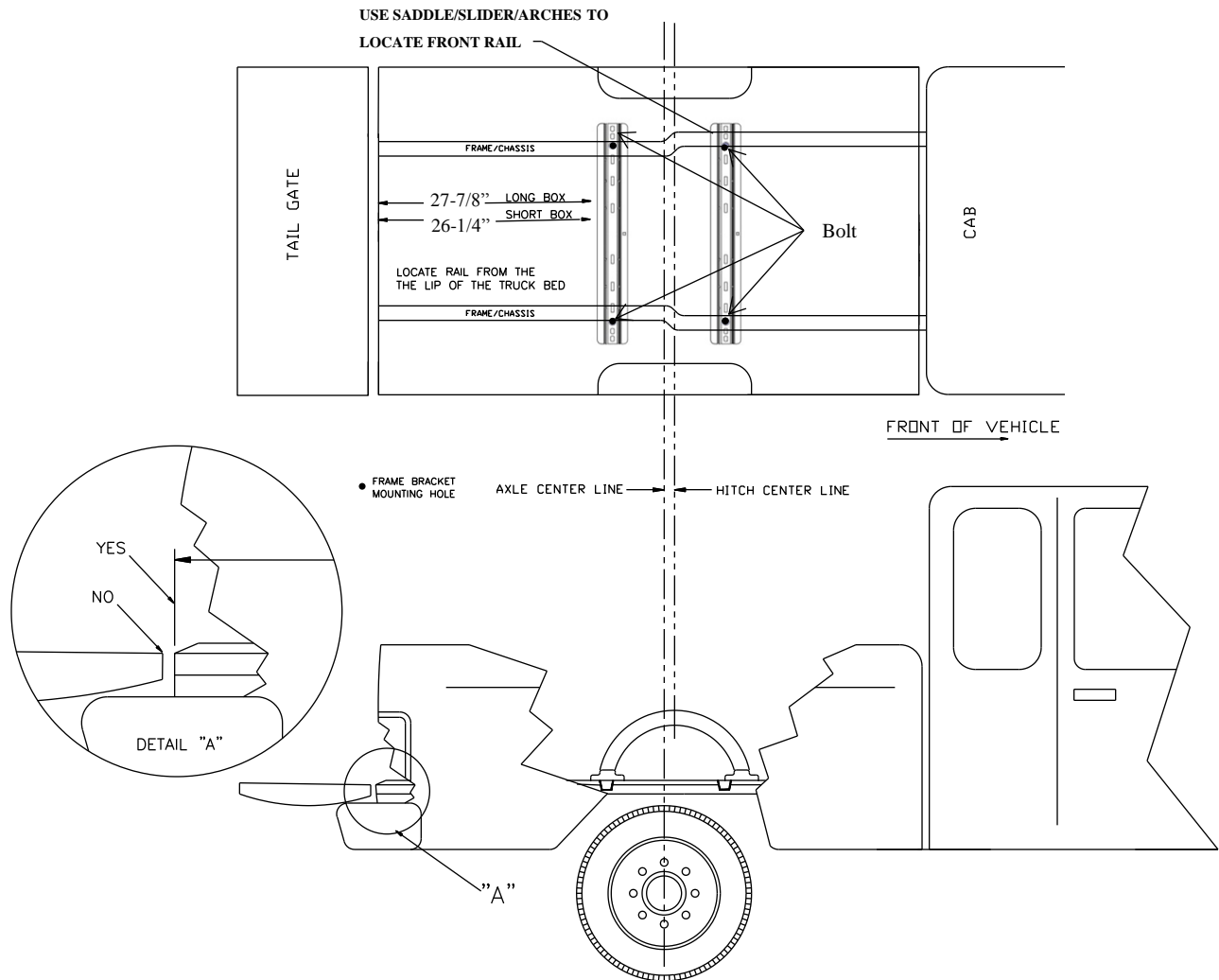
Installation Instructions
CUSTOM QUICK INSTALL
MOUNTING KIT
Ram 3500

Part Numbers:
50085

Figure 4

Position the Rail

RAILS 30095 OR 30124 ONLY



FOR RAILS 30124 OR 30095 ONLY