

Installation Instructions

CUSTOM QUICK INSTALL MOUNTING KIT

FOR 30035 & 58058 RAILS ONLY

2007 – Current Toyota Tundra

WARNING: Under no circumstances do we recommend exceeding [the towing](#) vehicle manufacturers recommended vehicle towing capacity.

READ ALL INSTRUCTIONS BEFORE STARTING THE INSTALLATION

Custom Quick Install mounting brackets only include the hardware to attach the custom brackets to the frame.

10 BOLT INSTALLATION

All Fasteners Typical Both Sides

Vehicle Forward ←

Equipment Required:

Fastener Kit:

Wrenches: 3/4", 15/16", 12mm & 19mm Socket Wrench, Torque Wrench

Drill Bits: 9/16"

Other Tools: Center Punch, Measuring Tape, Hammer, Pry Bar.

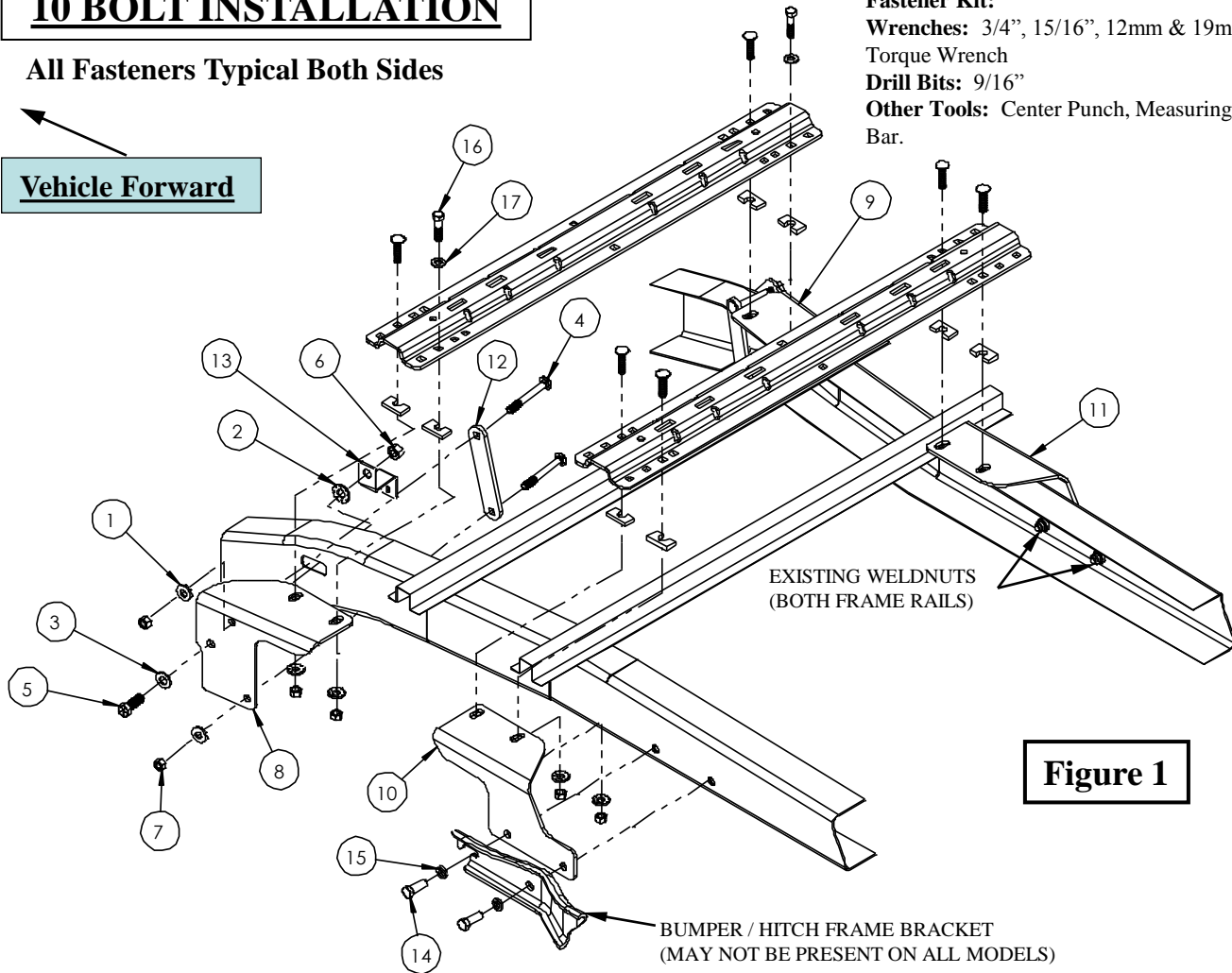


Figure 1

ITEM	DESCRIPTION	QUANTITY	ITEM	DESCRIPTION	QUANTITY
1	WASHER CONICAL 1/2	4	10	BRACKET, D.S. REAR	1
2	WASHER CONICAL 5/8	2	11	BRACKET, P.S. REAR	1
3	WASHER FLAT 5/8	2	12	BRACKET, STRAP	2
4	BOLT, CARRIAGE 1/2-13 X 5.5 Grade 8	4	13	BRACKET, S	1
5	BOLT, HEX HD 5/8-11 X 2 Grade 8	2	14	BOLT, HEX HD M14-1.5 X 40	4
6	NUT, HEX 5/8-11 Grade 8	2	15	WASHER LOCK 9/16	4
7	NUT, HEX 1/2-13 Grade 8	4	16	BOLT, HEX HD 1/2-13 X 2 Grade 5	2
8	BRACKET, D.S. FRONT	1	17	WASHER FLAT 1/2	2
9	BRACKET, P.S. FRONT	1			

All of the fasteners listed to the left are supplied with this kit, all other mentioned fasteners are supplied with part number 30035 & 58058.

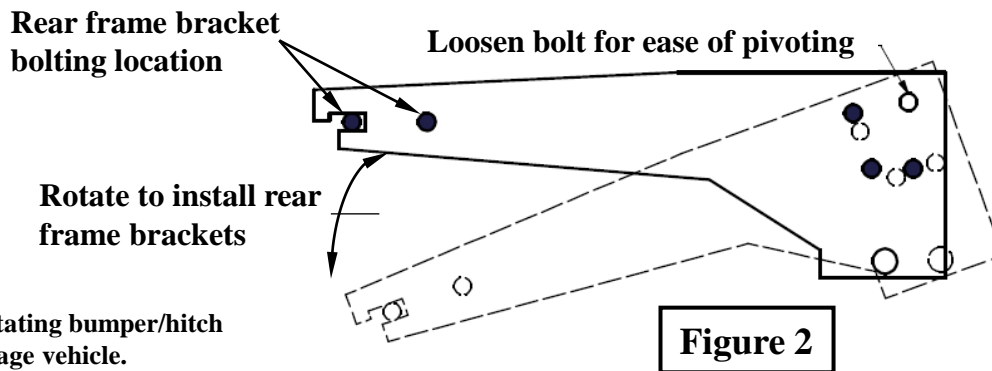
- Do not install mounting rails over plastic bed liners. Plastic bed liners must be cut out of the way to provide metal to metal contact. Mounting rails may be installed on spray in liners.
- Use only bolts, nuts, and washers supplied to install this kit. All bolts and nuts are Grade 8 unless otherwise specified.
- These instructions are guidelines only, actual installation is the responsibility of the installer and the owner. Always measure truck and trailer before installing hitch to be sure that there is clearance at the cab and at the bumper to allow for turns.
- Do not install this product on or attempt to tow with a truck with a 5-1/2' bed unless a sidewinder pinbox coupler has been installed on the trailer.

Warning!!

When installing to Figure 1 & 3, during drilling protect the fuel tank and filler tubes, brake lines and wire harness by placing a piece of metal between the box floor and potential components at risk on the driver's side. This will prevent drilling into these items.

Installation Instructions

1. Lower and remove spare tire if extra room is needed. If equipped with inner plastic wheel well liner, remove inner plastic wheel well covers to allow access to frame.
2. For the driver's side front bracket placement, remove the nut on the outside of the frame that supports the existing electrical box. Will Reposition later: The electrical box using the provided S bracket and original frame fasteners to create additional space for the driver's side bracket strap. See Figure 1.
3. If bumper/hitch bracket is present. Remove 5 of the 6 bumper/hitch frame bracket on both sides of vehicle. Loosen the top rear most bolt to allow the bumper/hitch frame bracket to pivot. Note: Bolt location marked with a ● needs to be removed. (See Figure 2)



Warning!!

Be careful when rotating bumper/hitch bracket not to damage vehicle.

4. With the bumper/hitch bracket rotated down to provide space for the frame brackets (10) & (11). Position frame brackets (10) & (11) on to the vehicle frame. Rotate bumper/hitch frame bracket back to location and loosely install 14m bolts (14) with 9/16" lock washers (15). **Note:** The frame bracket (10) & (11) should be sandwiched between vehicle frame and bumper/hitch bracket.
5. Place the rear mounting rail in the box of the truck, using your tape measure, center the rail between the weld seams on the length of the truck box floor and the proper distance from the rear edge of the truck see Figure 3.
6. Mark and center punch the holes as per Figure 3. Move the rail out of the way and drill each position with a 1/8" drill bit. **Warning: When drilling holes be aware of potential risks to vehicle components and make appropriate safe guards to protect them from damage.**
7. Check that the 1/8" inch drilled holes align with the slots of the rear frames brackets (10) and (11).
8. Enlarge the 1/8" inch drilled holes to 9/16". **Warning: When drilling holes be aware of potential risks to vehicle components and make appropriate safe guards to protect them from damage.**
9. Reposition the mounting rail over the holes.
10. Install the 1/2" x 2" carriage bolts with the U-shaped spacer to be located in the corrugation between the box and the mounting rail or between box and frame bracket (10) & (11). This insures a metal to metal contact and to prevent crushing the bed corrugation. Attach with spacers, washers, and hex nuts as per Figure 1 and tighten snug to keep the mounting rail from moving.
11. Place the unassembled 5th wheel legs with cross member/slider/goose into the already installed mounting rail. Position the front mounting rail with the 5th wheel legs with cross member/slider/goose by inserting the tabs into the mounting rail and pushing the mounting rail tight towards the other mounting rail. Ensure that the mounting rail is centered between the weld seams on the length of the truck box floor. This will position the mounting rail in the correct location and ensure that the 5th wheel will have a snug fit to the truck. **NOTE:** If more than one hitch product will be used with the rails then both should be used at the same time to align the second rail. This will ensure that one product does not compromise the fit of the other.
12. Mark and center punch the holes as per Figure 3. Move the rail out of the way and drill each position with a 1/8" drill bit. **Warning: When drilling holes be aware of potential risks to vehicle components and make appropriate safe guards to protect them from damage.**

13. Rotate the driver's side (8) and passenger's side (9) front brackets into place on the outside of the driver's side frame rail, such that the top and bottom bolt holes maintain clearance on top and bottom of the frame, while the middle hole aligns with the existing frame slot. Placing the top of the bracket against the bottom of the truck bed. Check that the 1/8 inch drilled holes align with the slots of the front frames brackets (8).
14. Enlarge the 1/8" inch drilled 9/16". **Warning: When drilling holes be aware of potential risks to vehicle components and make appropriate safe guards to protect them from damage.**
15. For each of the front two brackets:
 - Insert one 1/2" x 5 1/2" carriage bolt (4) through each square hole on a bracket strap (12) such that the bolt slides snugly into position.
 - Starting with the front mounting hole first on the driver's side, position the strap (12) and bolts (4) on the inside of the frame such that the bolts slide through the top and bottom strap holes on the bracket.
 - Install the 1/2" conical washer (1) and 1/2" nut (7). (hand tighten only)
 - Install the 5/8" x 1 3/4" bolt (5) with flat washer (3) through frame brackets (8)(9) and frame, install 5/8" washer conical (2), S bracket (13) (drivers side only) and 5/8" nut (6). (hand tighten only)
16. Reposition the mounting rail with hitch over the holes.
17. Install the 1/2" x 2" carriage bolts with the U-shaped spacer to be located in the corrugation between the box and the mounting rail or between box and frame bracket (8) & (9). This insures a metal to metal contact and to prevent crushing the bed corrugation. Attach with spacers, washers, and hex nuts as per Figure 1 and tighten snug to keep the mounting rail from moving. **Note:** Use 1/2" hex head bolt (16) with flat washer (17) instead of 1/2" x 2" carriage bolts see Figure 1 and 3.
18. Reattach the electrical box to the S bracket with existing hardware.
19. Re-install the remainder bumper/hitch bolts that was removed.
20. Torque all 1/2" hardware to 75ft. lb., 5/8" hardware to 212 ft. lb. and 14m to 122 ft.lb.

DIMENSIONS SPECIFIC FOR RAIL KIT 30035 OR 58058

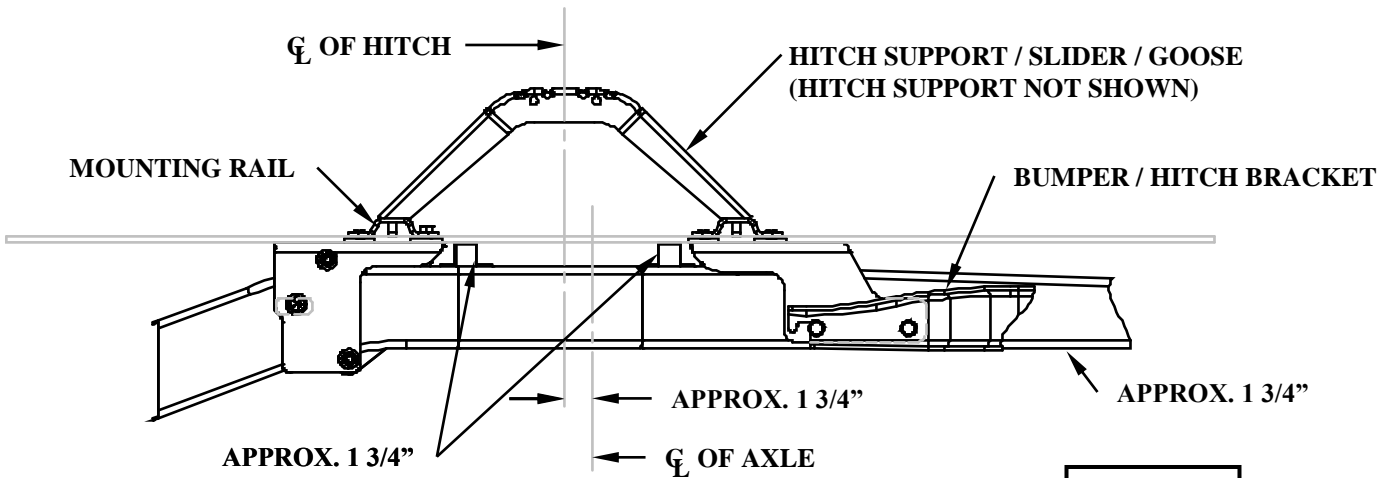
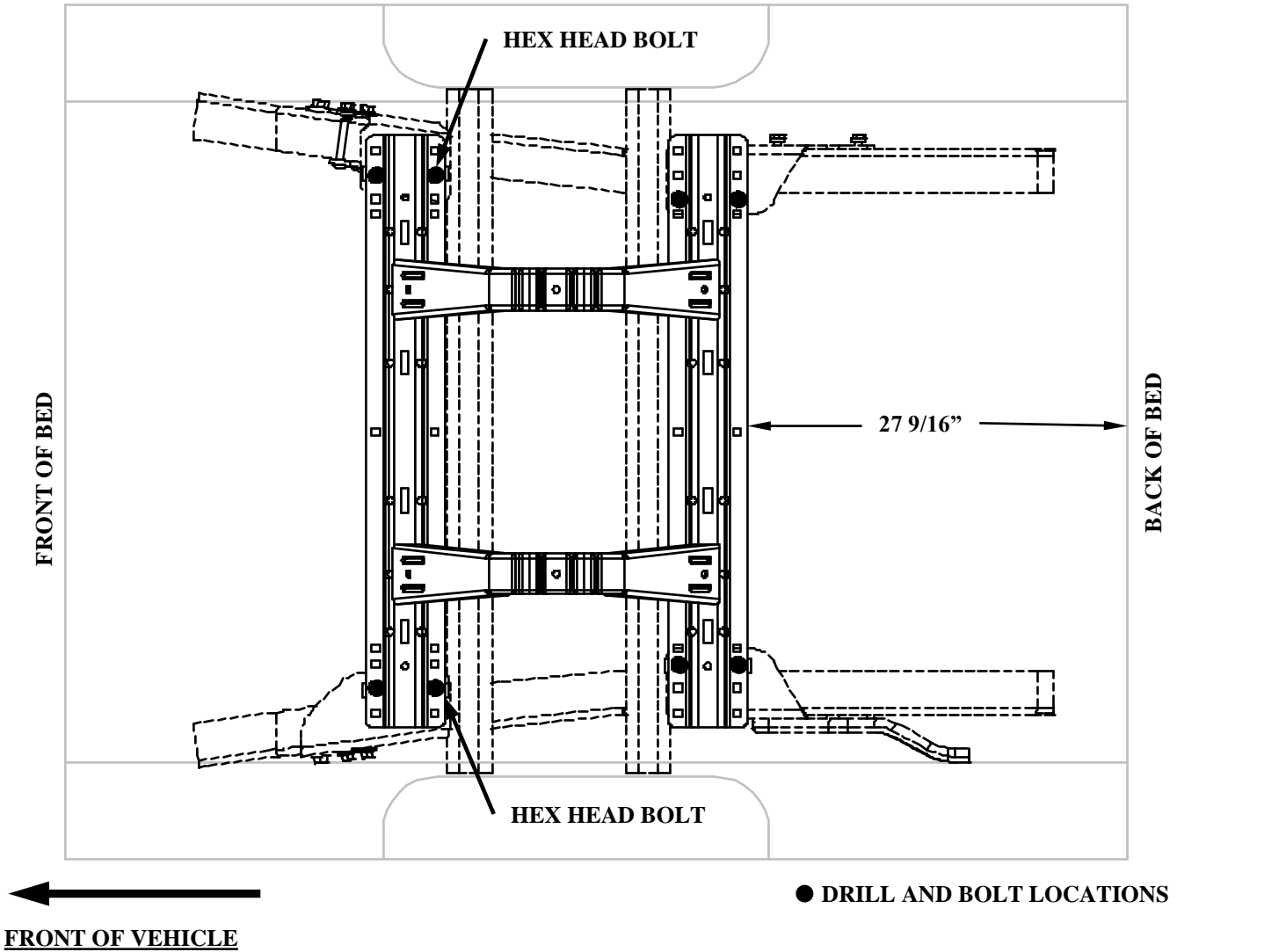


Figure 3