

Chevrolet/GMC 2500/3500  
2011 & up 2500 & 3500  
6'6", & 8' Bed Pickup Installation

**WARNING:** Under no circumstances does Cequent Performance Products, Inc. recommend exceeding the towing vehicle manufacturers recommended vehicle towing capacity.

### READ ALL INSTRUCTIONS BEFORE STARTING THE INSTALLATION

Custom Quick Install mounting brackets only include the hardware to attach the custom brackets to the frame..

#### 10 BOLT INSTALLATION

**Equipment Required:**

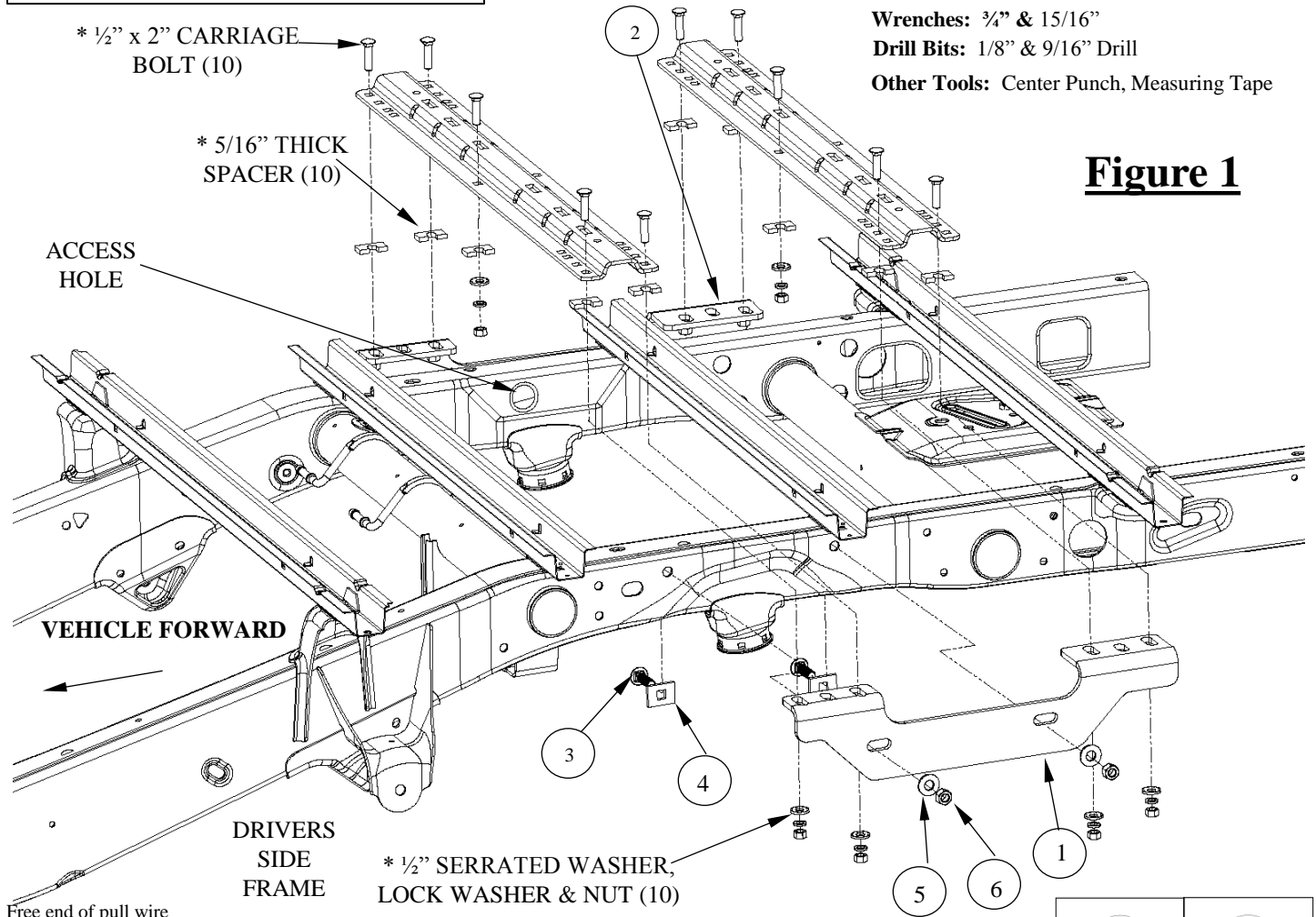
**Fastener Kit:** 50066F

**Wrenches:** 3/4" & 15/16"

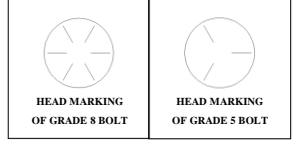
**Drill Bits:** 1/8" & 9/16" Drill

**Other Tools:** Center Punch, Measuring Tape

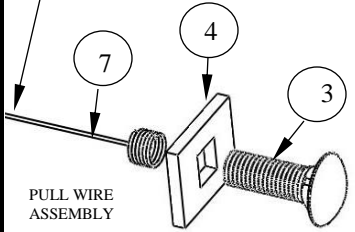
**Figure 1**



\*\* If fasteners with rail kit are missing, order service kit 58430.



ITEM #	DESCRIPTION	QUANTITY	ITEM #	DESCRIPTION	QUANTITY
1	FRAME BRACKET, LH	1	4	SQUARE HOLE PLATE	4
2	FRAME BRACKET, RH	1	5	5/8" SERRATED WASHER	4
3	5/8-11 x 2" CARRIAGE BOLT	4	6	5/8-11 HEX NUT	4
			7	5/8-11 PULL WIRE	4



PULL WIRE ASSEMBLY

# Installation Instructions

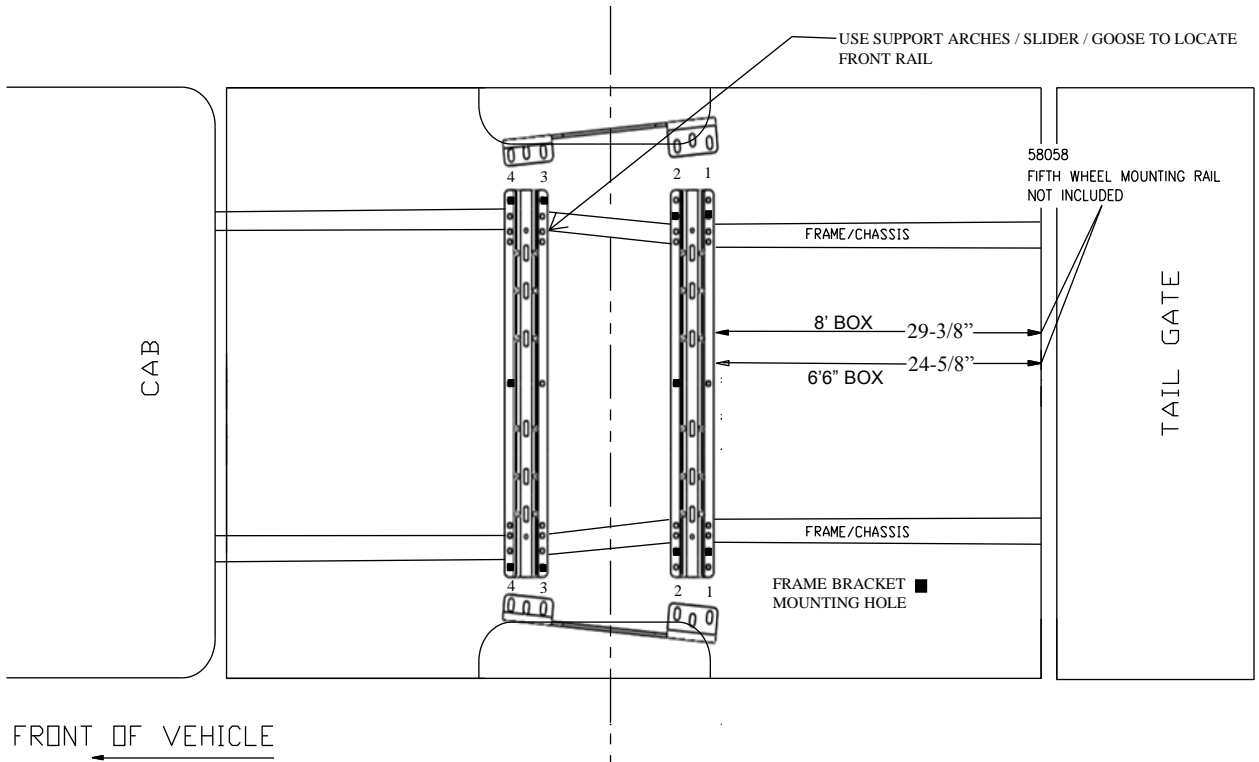
## CUSTOM QUICK INSTALL

### MOUNTING KIT

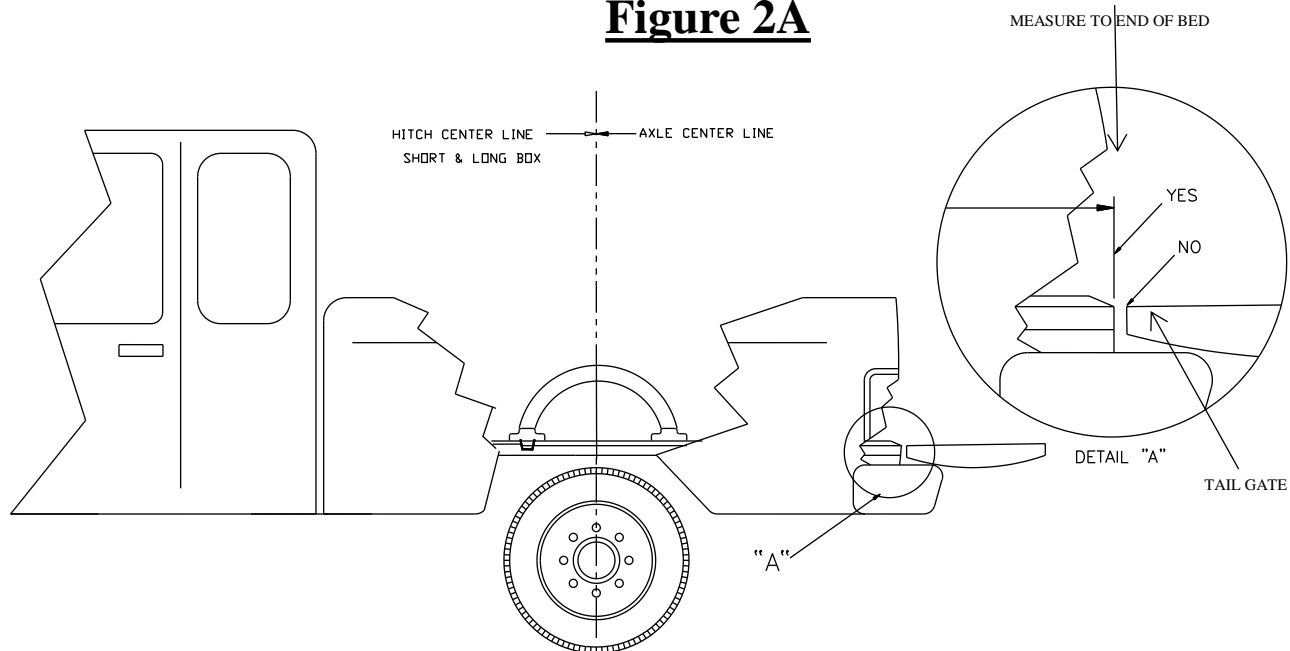
#### Chevrolet/GMC 2500/3500

Part Numbers:  
**50066**

### Position the Rail 58058



**Figure 2A**



**Figure 2B**

# Installation Instructions

## CUSTOM QUICK INSTALL

### MOUNTING KIT

#### **Chevrolet/GMC 2500/3500**

1. Do not install mounting rails over plastic bed liners. Plastic bed liners must be cut out of the way to provide metal to metal contact. Mounting rails may be installed on spray in liners.
2. Use only bolts, nuts, and washers supplied to install this kit. All bolts are Grade 5 and nuts are Grade 5 unless otherwise specified.
3. These instructions are guidelines only, actual installation is the responsibility of the installer and the owner. Always measure truck and trailer before installing hitch to be sure that there is clearance at the cab and at the bumper to allow for turns.
4. **DO NOT INSTALL THIS PRODUCT ON OR ATTEMPT TO TOW WITH A TRUCK WITH A BED THAT IS LESS THAN 6' LONG UNLESS A REESE™ SIDEWINDER PINBOX HAS BEEN INSTALLED ON THE TRAILER.**
5. Place one mounting rail in the bed of the vehicle. Center the rail on the floor of the truck bed and use your tape measure to locate the proper distance from the rail to the rear edge of the truck box as illustrated , Figure 2A.

**NOTE: On the driver's side of the vehicle the gas tank is located below the bed of the vehicle. When drilling holes through the bed be sure not to damage the fuel tank.**

6. Use a center punch to mark the holes in the rail per the illustration. Use the second hole from the outside as shown in Figure 2. Move the rail out of the way and drill each position with a 1/8" drill bit.
7. Temporarily position the frame brackets (Items 1 & 2) on the sides of the frame. Align the holes on the side of the bracket with the 5/8" holes in the side of the frame. Check that the 1/8" drilled holes align with the slots in the frame brackets. If not, re-position the 1/8" holes. Remove the frame brackets from the vehicle.
8. Enlarge the 1/8" holes to 9/16".
9. Fasten the frame brackets( Items 1 & 2) to the vehicle frame rails as shown in Figure 1. Screw a 5/8" pull wire(Item 7) over a 5/8" x 2" carriage bolt(Item 3). Place a square hole spacer(Item 4) over the pull wire(Item 7). Insert the free end of the pull wire(Item 7), see bottom of Figure 1, into the large access hole on the inside of the frame. See Figure 1. Pull the threaded end of the bolt(Item 3) out through one of the mounting holes. Be sure the square hole plate(Item 4) is over the bolt and the square shank of the bolt is in the square hole. Place the bracket over the bolt. Remove the wire(Item 7). Install a 5/8" serrated washer(Item 5) and 5/8" nut(Item 6) on the bolt(Item 3). Finger tighten the nut(Item 6). Repeat for the other 3 bolts.
10. Reposition the rear mounting rail over the holes in the bed and fasten the mounting rail to the frame brackets using the supplied carriage bolts that came with the rail kit. The 1/2" x 2" carriage bolts will be inserted down through the rail and the bed. The bolts will come out through the outside holes in the flange of the bracket. Use the supplied 5/16" thick U-shaped blocks between the frame bracket and the bottom of the bed or the mounting rails and the truck bed to ensure metal to metal contact. Install 1/2" serrated washers, lock washers and nuts on the bolts. Finger tighten the nuts.
11. Place the unassembled fifth wheel support arches/slider/goose into the already installed rear mounting rail. Position the forward mounting rail with the support arches/slider/goose by inserting the tabs into the mounting rail and pushing the mounting rail tight towards the other mounting rail. Ensure that the mounting rail is centered on the bed of the vehicle. This will position the rail in the correct location and ensure that the Fifth wheel will have a snug fit to the truck. **Note:** If more than one hitch product will be used with the mounting rails then both types should be used at the same time to align the rearward mounting rail. This will ensure that one product does not compromise the fit of the other.
12. Use a center punch to mark the holes in the front rail as per the illustration. Use the outside holes as shown in Figure 2A. Move the rail out of the way and drill each position with a 1/8" drill bit. Check that the 1/8" drilled holes align with the slots in the frame brackets. If not, re-position the 1/8" holes.
13. Enlarge the 1/8" holes to 9/16".
14. Repeat installation step 10 for front rail.
15. Torque all 1/2" nuts to 75 ft-lbs. Torque all 5/8" Grade 5 nuts to 150 ft-lbs. and 5/8" Grade 8 nuts to 212 ft-lbs.

# Installation Instructions

## CUSTOM QUICK INSTALL MOUNTING KIT

Part Number

**Chevrolet/GMC 2500/3500**  
**2011 & up 2500 & 3500**  
**6'6", & 8' Bed Pickup Installation**

**50066**

**WARNING:** Under no circumstances does Cequent Performance Products, Inc. recommend exceeding the towing vehicle manufacturers recommended vehicle towing capacity.

**READ ALL INSTRUCTIONS BEFORE STARTING THE INSTALLATION**

Custom Quick Install mounting brackets only include the hardware to attach the custom brackets to the frame..

**4 BOLT INSTALLATION**

WITH 30124 OR 30095

**Figure 3**

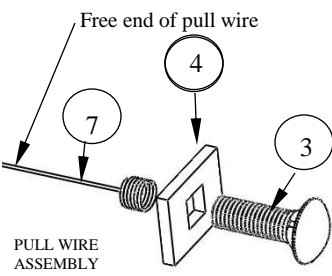
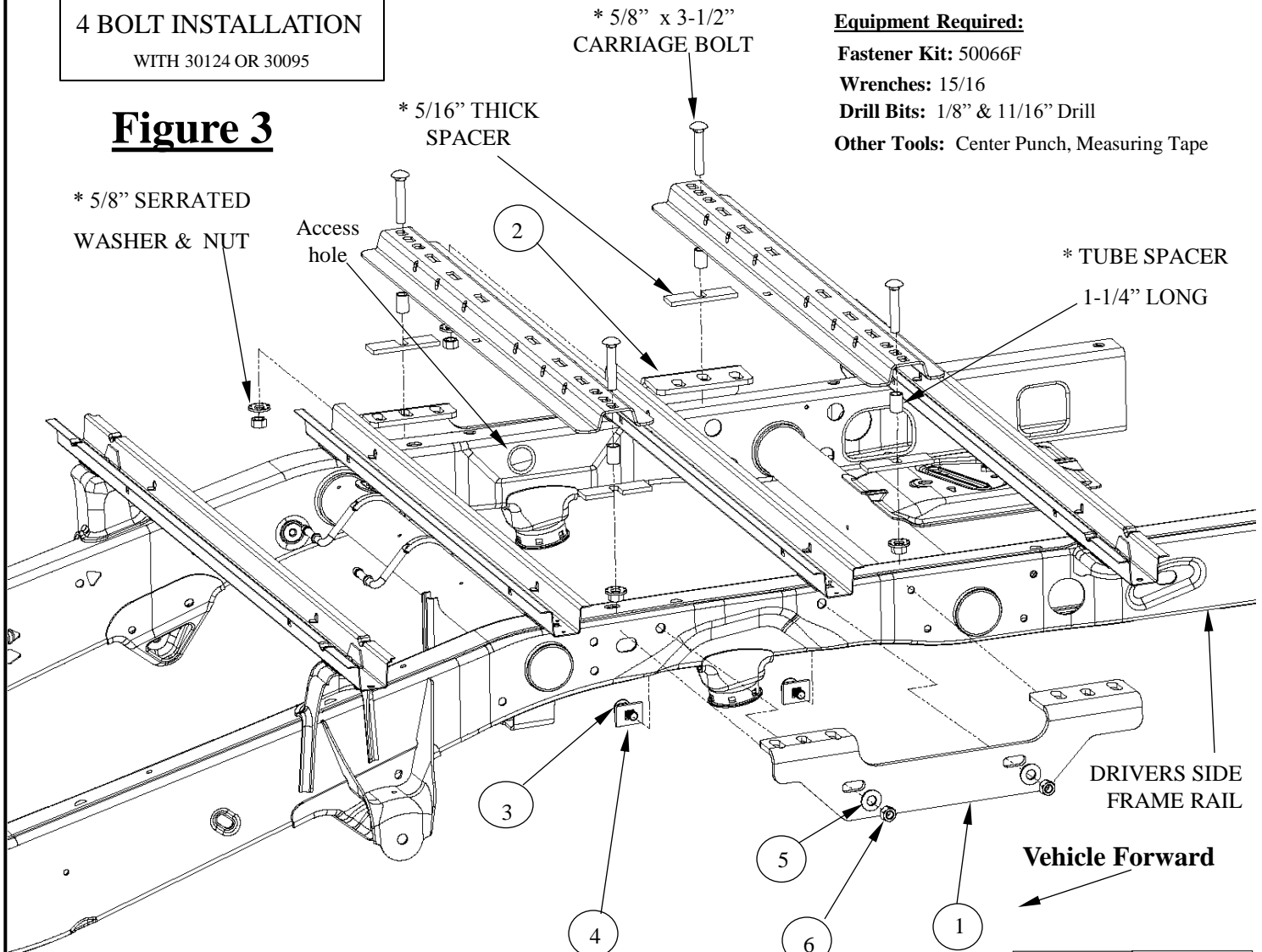
**Equipment Required:**

**Fastener Kit:** 50066F

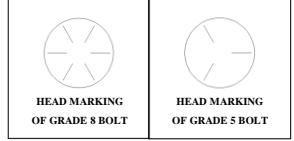
**Wrenches:** 15/16

**Drill Bits:** 1/8" & 11/16" Drill

**Other Tools:** Center Punch, Measuring Tape



\*\*\* If fasteners with the rail kit are missing, order service kit 58406.



ITEM #	DESCRIPTION	QUANTITY	ITEM #	DESCRIPTION	QUANTITY
1	FRAME BRACKET, LH	1	4	SQUARE HOLE PLATE	4
2	FRAME BRACKET, RH	1	5	5/8" SERRATED WASHER	4
3	5/8-11 x 2" CARRIAGE BOLT	4	6	5/8-11 HEX NUT	4
			7	5/8-11 PULL WIRE	4

# Installation Instructions

## CUSTOM QUICK INSTALL MOUNTING KIT

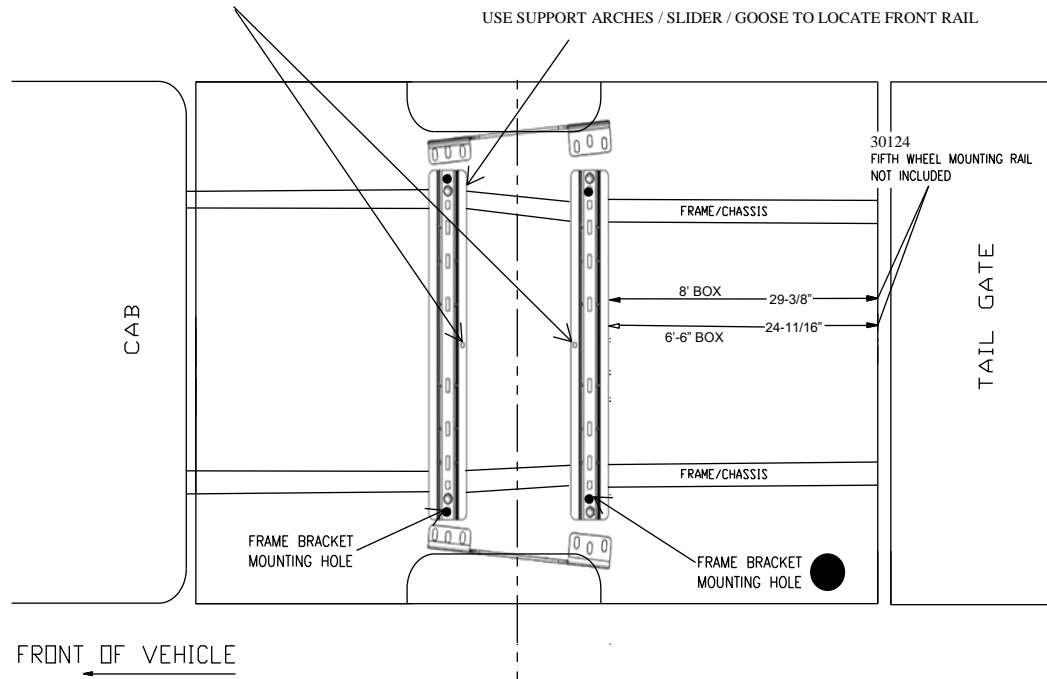
**Chevrolet/GMC 2500/3500**

### **Position the Rail 30124**

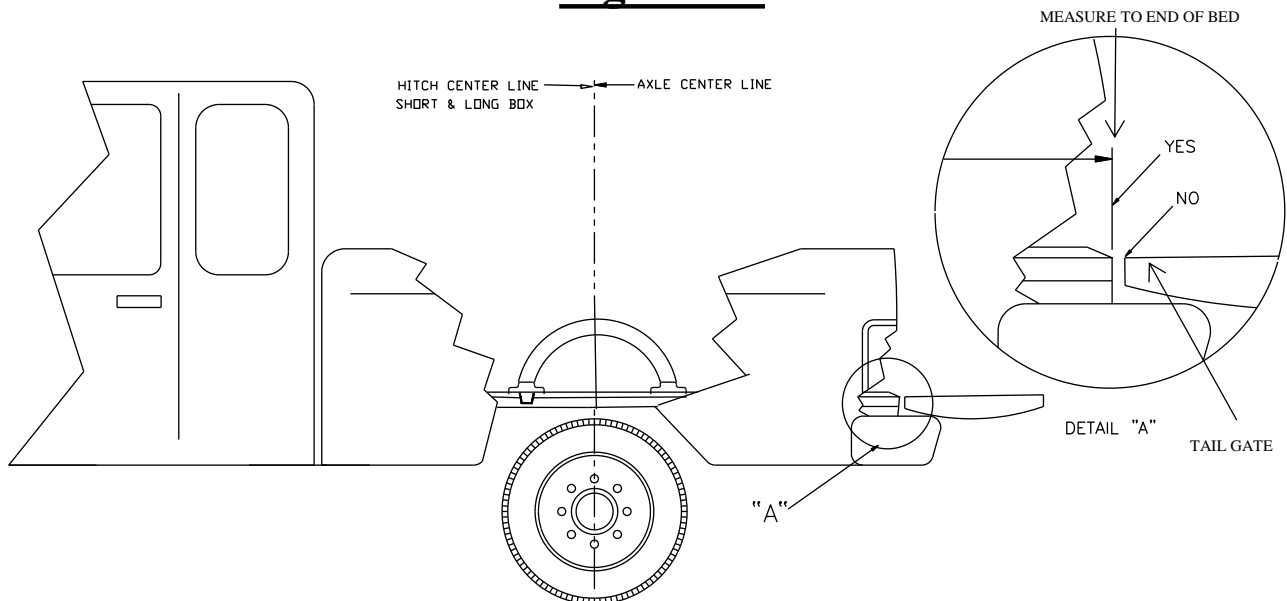
Part Numbers:

**50066**

NOTE: If you are installing a hitch rated over 18K, additional hardware, (supplied with that hitch), must be installed in the center of each rail.



**Figure 4A**



**Figure 4B**

# Installation Instructions

Part Numbers:

## CUSTOM QUICK INSTALL

**50066**

### MOUNTING KIT

#### **Chevrolet/GMC 2500/3500**

1. Do not install mounting rails over plastic bed liners. Plastic bed liners must be cut out of the way to provide metal to metal contact. Mounting rails may be installed on spray in liners.
2. Use only bolts, nuts, and washers supplied to install this kit. All bolts are Grade 5 and nuts are Grade 5 unless otherwise specified.
3. These instructions are guidelines only, actual installation is the responsibility of the installer and the owner. Always measure truck and trailer before installing hitch to be sure that there is clearance at the cab and at the bumper to allow for turns.
4. DO NOT INSTALL THIS PRODUCT ON OR ATTEMPT TO TOW WITH A TRUCK WITH A BED THAT IS LESS THAN 6' LONG UNLESS A REESE™ SIDEWINDER PINBOX HAS BEEN INSTALLED ON THE TRAILER.
5. Place one mounting rail in the bed of the vehicle. Center the rail on the floor of the truck bed and use your tape measure to locate the proper distance from the rail to the rear edge of the truck box as illustrated , Figure 4.

**NOTE: On the driver's side of the vehicle the gas tank is located below the bed of the vehicle. When drilling holes through the bed be sure not to damage the fuel tank.**

6. Use a center punch to mark the holes in the rail per the illustration. Use the center mounting hole as shown in Figure 4. Move the rail out of the way and drill each position with a 1/8" drill bit.
7. Temporarily position the frame brackets(Items 1 & 2) on the sides of the frame. Align the holes on the side of the bracket with the 5/8" holes in the side of the frame. Check that the 1/8" drilled holes align with the slots in the frame brackets. If not, re-position the 1/8" holes. Remove the frame brackets from the vehicle.
8. Enlarge the 1/8" holes to 11/16".
9. Fasten the frame brackets(Items 1 & 2) to the vehicle frame rails as shown in Figure 3. Screw a 5/8" pull wire(Item 7) over a 5/8" x 2" carriage bolt(Item 3). Place a square hole spacer(Item 4) over the pull wire(Item 7). Insert the free end of the pull wire(Item 7), bottom of Figure 3, into the large access hole on the inside of the frame. See Figure 3. Pull the threaded end of the bolt(Item 3) out through one of the mounting holes. Be sure the square hole plate(Item 4) is over the bolt(Item 3) and the square shank of the bolt is in the square hole. Place the bracket over the bolt(Item 3). Remove the wire(Item 7). Install a 5/8" serrated washer(Item 5) and 5/8" nut(Item 6) on the bolt(Item 3). Finger tighten the nut(Item 6). Repeat for the other 3 bolts.
10. Reposition the rear mounting rail over the holes in the bed and fasten the mounting rail to the frame brackets using the supplied carriage bolts that came with the rail kit. The 5/8" x 3-1/2" carriage bolt will be inserted down through the rail and through the 1-1/4" long tube spacer. The bolt will come out through the center hole in the flange of the bracket. Use the supplied 5/16" thick U-shaped blocks between the frame bracket and the bottom of the bed or the mounting rails and the truck bed to ensure metal to metal contact. Install 5/8" serrated washers and nuts on the bolts. Finger tighten the nuts.
11. Place the unassembled fifth wheel support arches/slider/goose into the already installed rear mounting rail. Position the forward mounting rail with the support arches/slider/goose by inserting the tabs into the mounting rail and pushing the mounting rail tight towards the other mounting rail. Ensure that the mounting rail is centered on the bed of the vehicle. This will position the rail in the correct location and ensure that the 5<sup>th</sup> wheel will have a snug fit to the truck. **Note:** If more than one hitch product will be used with the mounting rails then both types should be used at the same time to align the rearward mounting rail. This will ensure that one product does not compromise the fit of the other.
12. Use a center punch to mark the holes in the front rail as per the illustration. Use the outside holes as shown in Figure 4. Move the rail out of the way and drill each position with a 1/8" drill bit. Check that the 1/8" drilled holes align with the slots in the frame brackets. If not, re-position the 1/8" holes.
13. Enlarge the 1/8" holes to 11/16"
14. Repeat installation step 10 for front rail.
15. Torque all 5/8" Grade 5 nuts to 150 ft-lbs. and 5/8" Grade 8 nuts to 212 ft-lbs.