



Installation Instructions

Part Numbers:

50040

**DODGE RAM (1/2 TON AND 3/4 TON)
2002 – 2008 1500 PICK UP TRUCK
2003 –2012 2500 PICK UP TRUCK
(Except Megacab)**

Parts List

	Qty	Description
A	1	Left Frame Bracket
B	1	Right Frame Bracket
C	2	Front Strap (stickered)
D	2	Front Spacer Strap
E	2	Rear Strap (black)
F	2	5th Wheel Mounting Rail, NOT INCLUDED

Hardware List – liste de la quincaillerie

	Qty	Description
1	8	1/2" x 4-1/2" Carriage Bolt 1/2" x 4" Carriage Bolt –
2	2	1/2" x 2-1/4" Carriage Bolt 1/2" Hex Nut
3	6	Rear Bushing (black)
4	16	Front Bushing (colored)
5	4	Front Bushing (yellow)
6	4	U-Shape Spacer
7	6	1/4" x 1-1/2" x 2" spacer
8	8	1/4" x 2" x 3" spacer
9	6	Plastic wire tie
10	2	1/2" Lock Washer
11	1	
12	16	

Tool list – liste des outils

1	Center Punch
2	1/8" Drill bit
3	1/2" Drill bit
4	9/16" Drill bit
5	3/4" Step Drill
6	3/4" Wrench and Socket
7	13mm Socket
8	100 ft/lbs (203 N-m) Torque Wrench
9	Measuring Tape
10	Saws All (6' Truck box only)

Do Not Exceed Lower of Towing Vehicle Manufacturer's Rating or/

Max Gross Trailer Wt./	Max Tongue Wt./
18,000 lb./8,160 kg.	4,500 lb./2,040 kg.

Warning: This hitch is designed to safely carry the loads specified. Under no circumstances do we recommend exceeding the towing vehicle manufacturer's

General Instructions

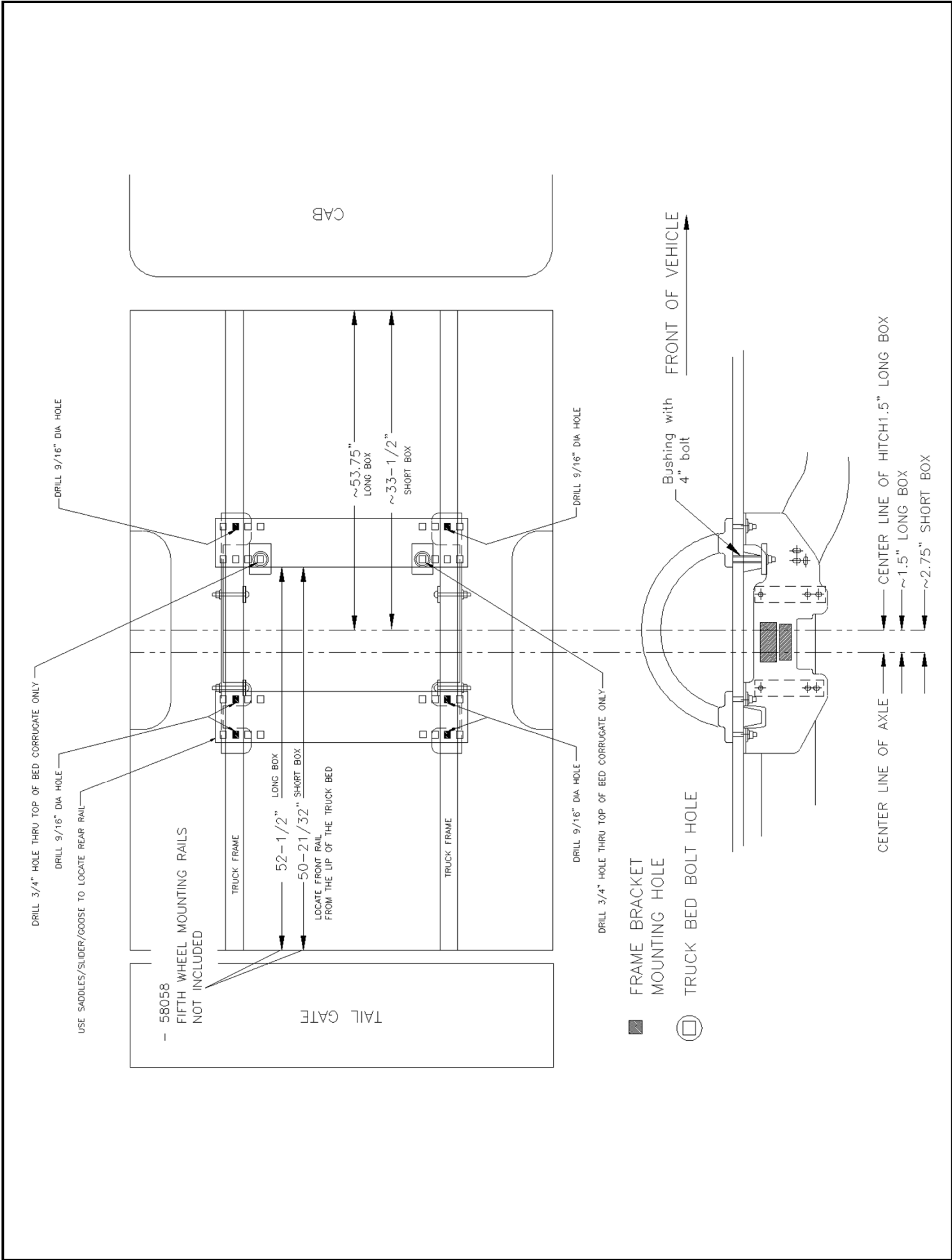
1. Do not install mounting rails over plastic bed liners. Plastic bed liners must be cut out of the way to provide metal to metal contact. Mounting rails may be installed on spray in liners
2. Use only bolts, nuts, and washers supplied to install this kit. All bolts are grade 5 and nuts are grade 5 unless specified otherwise.
- 3. THESE INSTRUCTIONS ARE GUIDE LINES ONLY, ACTUAL INSTALLATION IS THE RESPONSIBILITY OF THE INSTALLER AND THE OWNER. ALWAYS MEASURE TRUCK AND TRAILER BEFORE INSTALLING HITCH TO BE SURE THAT THERE IS CLEARANCE AT THE CAB AND AT THE BUMPER TO ALLOW FOR TURNS.**

Warning!!

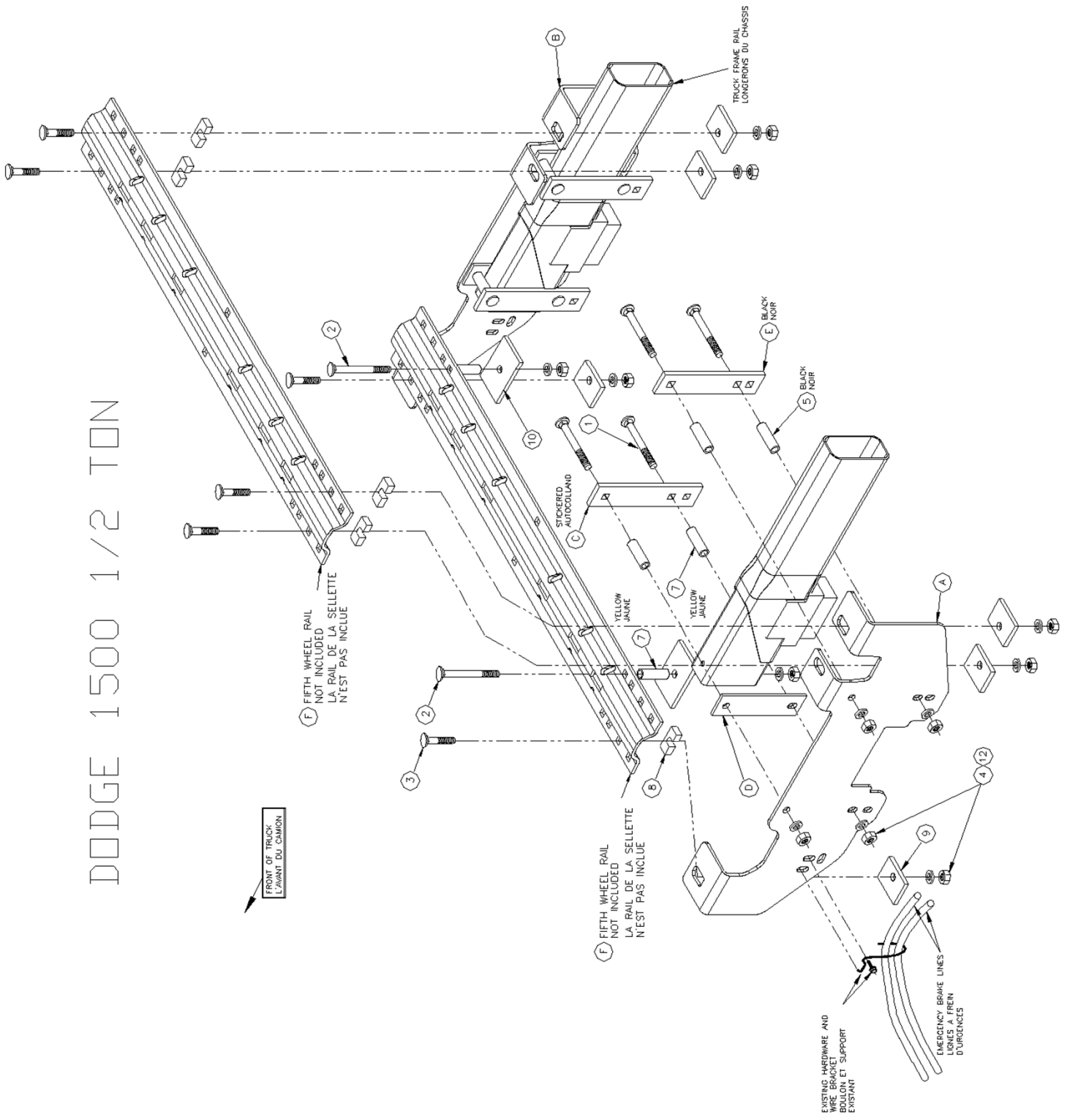
When installing, during drilling protect the fuel tank by placing a piece of metal between the box support and the fuel tank on the driver's side. This will prevent drilling through the fuel tank. Be sure to use 4" carriage bolts here only.

Installation Instructions

1. Lower and remove spare tire.
2. Remove emergency brake cable hanger in driver side wheel well and keep the hanger and the bolts.
3. Detach the 2 electrical harness hanger plugs from the inside driver side of the frame just rear of the fuel tank.
4. If required, remove the ground wire attachment from the frame.
5. On 6' truck boxes only and using a Saws All, cut off the extension attached to the truck box support beams and straddling the frame of the truck. This will insure that the frame brackets (A) and (B) can mount to the outside of the truck frame. **Note:** This is not a structural part of the truck box and is only used by the manufacturer during assembly.
6. Place one mounting rail in the box of the truck, using your tape measure, center the rail between the weld seams on the length of the truck box floor and the proper distance from the rear edge of the truck box as illustrated for options 1 and 2.
7. Mark and center punch the holes as per the illustrations. Move the rail out of the way and drill each position with a 1/8" drill bit.
8. Temporarily position the frame bracket on the outside of the frame and check that the 1/8" drilled holes align with the slots of the frame bracket. Remove the frame bracket from the vehicle.
9. Enlarge the 1/8" drilled holes to the hole sizes stated in the illustrations with the step drill.
10. When installing the bushings into the box supports, place the bushing on the 1/2" drill bit and insert them into the predrilled 3/4" hole. Drill a 1/2" hole thru the bottom of the box support using the bushing as a guide. When completed remove the drill and bushing and re-drill the 1/2" hole with the 9/16" drill bit.
11. Loosely install the frame brackets by attaching the straps, collars, carriage bolts, brackets and nuts. (See illustration) **Note:** Be sure to use the colored bushing and straps in the front and the black in the back. The front spacer strap (D) is only required on the 1500 applications.
12. Loosely install the emergency brake cable hanger with the original hardware.
13. Move the mounting rail into position and rotate it up on its edge, insert the 4" long carriage bolts (2) into the rail and place the front bushings (7) over the bolts. Holding on to the bushings rotate the rail into position while inserting the bushing and bolt into the holes
14. Install the 2 1/2" carriage bolts with the U-shaped spacer (8) to be located in the corrugation between the box and the mounting rail. This insures a metal to metal contact. Attach with spacers and nuts as per the illustrations and tighten snug to keep the mounting rail from moving.
15. Place the unassembled 5th wheel saddles/slider/goose into the already installed mounting rail. Position the second mounting rail with the saddles/slider/goose by inserting the tabs into the mounting rail and pushing the mounting rail tight towards the other mounting rail. Ensure that the mounting rail is centered between the weld seams on the length of the truck box floor. This will position the mounting rail in the correct location and ensure that the 5th wheel will have a snug fit to the truck. **NOTE:** If more than one hitch product will be used with the rails then both should be used at the same time to alien the second rail. This will ensure that one product does not compromise the fit of the other.
16. Repeat steps 7, 9 and 14.
17. If removed, reinstall the ground wire. Relocation of the ground wire mount may be required to prevent interference.
18. After fully installing the 50040 custom attachment brackets, tighten the fasteners in the following sequence. **Note: Torque all 1/2 inch hardware to 72 ft-lbs. First torque the mounting rails to the frame brackets and then torque the frame brackets to the truck frame.**
19. Tighten the bolts securing the emergency brake cable hanger.
20. Secure the wire harness with the wire tie supplied.
21. Reinstall spare tire.



DODGE 1500 1/2 TON



DODGE 2500 3/4 TON

