

Installation Instructions

REESE® CUSTOM QUICK INSTALL MOUNTING KIT **Part Number:**

56018

FOR 30153 REESE® RAIL

RAM 1500

WARNING: Under no circumstances do we recommend exceeding the towing vehicle manufacturers recommended vehicle towing capacity.

Equipment Required:

Fastener Kit: 56018F

Wrenches: 3/4", 11/16", 8mm

Drill Bits: 1/8", 9/16", 13/16"

Other Tools: Center Punch, Measuring Tape, Torque Wrench,
Die Grinder with Carbide Tip



VEHICLE FORWARD



Figure 1

- Do not install mounting rails over plastic bed liners. Plastic bed liners must be cut out of the way to provide metal to metal contact. Mounting rails may be installed on spray in liners.
- Use only bolts, nuts, and washers supplied to install this kit. All bolts and nuts are Grade 8 unless otherwise specified.
- These instructions are guidelines only, actual installation is the responsibility of the installer and the owner. Always measure truck and trailer before installing hitch to be sure that there is clearance at the cab and at the bumper to allow for turns.
- Do not install this product on or attempt to tow with a truck with a 5-1/2' bed unless a sidewinder pin box coupler has been installed on the trailer.
- Warning: When drilling holes be aware of potential risks to vehicle components above & below the truck bed and make appropriate safe guards to protect them from damage.

Installation Instructions

- 1.) Lower and remove spare tire as needed. If equipped with inner plastic wheel well liner, remove wheel well liners to allow access to frame with 8mm socket.
- 2.) Place the front mounting rail in the box of the truck, using a tape measure, center the rail between the weld seams on the length of the truck box floor/ or the wheel well and the proper distance from the rear edge of the truck. (See Figure 2)
- 3.) Mark and center punch the holes as per the illustrations. Move the rail out of the way and drill each position with a 1/8" drill bit. (See Figure 2)
- 4.) Loosely install the forward frame brackets (1) & (2) using the appropriate hardware and hand tighten. (See Figure 3)
 - A.) Using (2) 7/16" fishwire provided, install two 7/16" x 1-3/4" bolts (6) and 7/8 x 1-1/2 blocks (5) into rectangular hole in frame. Keep both fishwires on the bolts until the bracket is installed. (See Figure 3)
 - B.) Thread the two fishwires through the frame bracket as you position the frame brackets (1) & (2) over the frame mounting holes, and route the 1/2" x 1-3/4" carriage bolt (11) and 1-1/2" x 3" block (8) in forward slot of spring tower. (See Figure 3).
 - C.) Install the 7/16 conical washer (9) over the two bolts and then the 7/16-14 nut (10) over the bolts (6) and hand tighten. During final tightening the bolt lengths should extend beyond the nut the same amount. If this is not the case, the blocks in the frame are not flat against the frame as (See Figure 3).

Hint; Keep the fishwire on bolts until after the washer is on and push the washer to one side to pinch and hold the bolt from dropping into the frame while the fishwire is removed and the nut is installed.

- D.) Install the 1/2 conical washer (19) over the bolt and then the 1/2-13 nut (20) over the bolt (11) and hand tighten.
- 5.) Check that the 1/8" drilled holes from step 3 or 13 align with the holes of the frame bracket. If holes do not align, restart the installation at step 3 or 13 by adjusting 1/8" holes in bed of truck. When the holes align with the brackets, remove the brackets. **Note, bolt 14 must be centered in the existing slot of bed crossmember see figure 4**
- 6.) Enlarge all 1/8" holes in bed to 9/16" for 1/2" bolts.
- 7.) Enlarge the holes in Row 2 in the TRUCK BED ONLY to 13/16". The slot in the end of the bed crossmember will also need to be opened from 5/8" to 13/16" (See **caution; recommendation below**). Paint all bare metal.

Caution; Recommend using a die grinder with a grinding stone or a carbide bit from below to open slots in crossmember. The drill will catch in the slot and possibly cause injury.

- 8) Replace the mounting bracket as described in step 4 or 13
 - 9.) Row 2 frame fasteners; Place the spacer blocks (12) on mounting brackets and install tube spacers (13) in the Row 2 bolt locations. (See Figures 3,5)
 - 10.) Reposition the mounting rail over the holes.
 - 11.) Install the front rail attachment bolts (14, 15) as shown. Ensure that U-shaped spacers (18) and spacer block (21) are installed as shown. (See Figure 3)
- Attach the 1/2" conical washers (16) and hex nuts (17) on the bottom side of the frame bracket (1) & (2) and center bed location, as per figure 3, and tighten snug to keep the mounting rail from moving. **See Figure 5 for a detailed view of the bolts in row 2.**

- 12.) Remove wire harness retainers (tree style) with appropriate tool from the frame. One required on D.S. and up to 3 required P.S.(air suspension). (See Figure 6).

Rear Mounting

- 13.) Loosely install the frame brackets (3) & (4) using the appropriate hardware and hand tighten. (See Figure 3,5,7,8). **Hint, if you need a little more vertical room to install brackets, the bed crossmembers close to the axle are not bolted to the frame and can be lifted to help bracket installation.**
 - A.) **Driver's side rear;** Using (2) 7/16" fishwire provided, install two 7/16" x 1-3/4" bolts (6) and 7/8 x 1-1/2 blocks (5) into rectangular hole in frame. Keep both fishwires on the bolts until the bracket is installed. Same process as front brackets. (See Figure 3). **Passenger side rear** using the same install process as the other fasteners in the rectangular holes, but only using one longer fastener (23) and a larger block in the frame (7). (See Figure 3 and 8)
 - B.) Thread the fishwires through the frame bracket as you position the frame brackets (3 & 4) over the frame mounting holes. (See Figure 3).
 - C.) Install the 7/16 conical washer (9) over the bolts and then the 7/16-14 nuts (10) over the bolts (6 & 23) and hand tighten. During final tightening the bolt lengths should extend beyond the nut the same amount. If this is not the case the blocks in the frame are not as shown in figure 3.
 - D.) Using the 7/16" fishwire in the rear hole of the rear bracket and fish it to a larger slot the rear of the bracket. See fig xx and install block (7) and bolt (6) into frame and thru bracket. Install the 7/16 conical washer (9) over the two bolts and then the 7/16-14 nut (10) over the bolts (6) and hand tighten.
- 14.) Place the unassembled 5th wheel legs/slider/goose into the already installed front mounting rail. Position the rear rail with the legs/slider/goose by inserting the tabs into the mounting rail and pushing the mounting rail tight towards the other mounting rail. Ensure that the mounting rail is centered between the weld seams on the length of the truck box floor. This will position the mounting rail in the correct location and ensure that the 5th wheel will have a snug fit to the truck. **Note: If more than one hitch product will be used with the rails then both should be used at the same time to align the second rail. This will ensure that one product does not compromise the fit of the other.**
- 15.) Mark and center punch the holes in the rear mounting rail as per figure 2. Move the rear mounting rail out of the way, and drill with a 1/8" drill bit.
- 16.) Repeat steps 5,6, 8, &10 form the front mounting rail.
- 17.) Install the rear rail attachment bolts (15) as shown. Ensure that U-shaped spacers (18) and spacer block (21) are installed as shown. (See Figures 3). Attach the 1/2" conical washers (16) and hex nuts (17) on the bottom side of the frame bracket (3) & (4) and center bed location, as per figure 3, and tighten snug to keep the mounting rail from moving.
- 18.) Torque all hardware. **Note: Torque all 1/2" Gr. 8 hardware to 110 ft-lbs. Torque all 7/16" hardware to 50 ft-lbs. First torque the bed mounting rails to the frame brackets and then torque the frame brackets to the truck frame.**
- 19.) Refasten all wire harness with cable ties provided. Replace inner plastic wheel well liner to body, and spare tire.

CAUTION: ADD FOR THICKNESS OF SPRAY-IN BED LINER

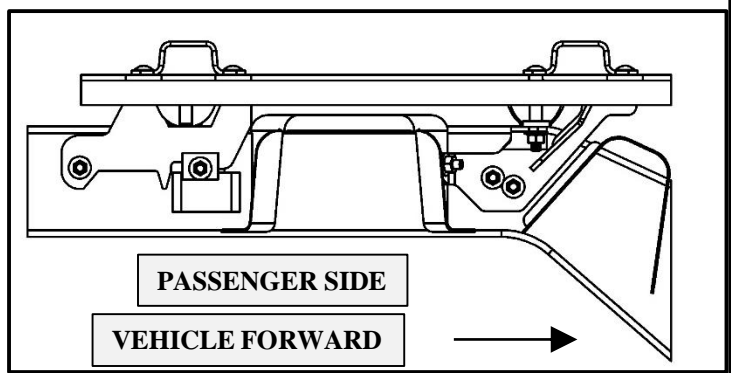
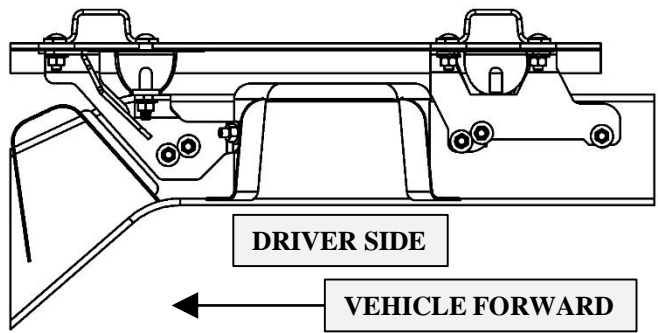
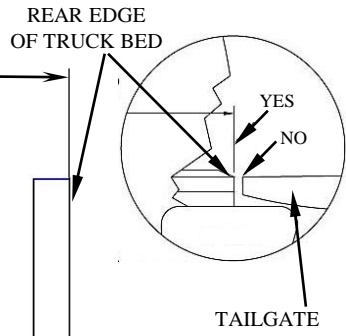
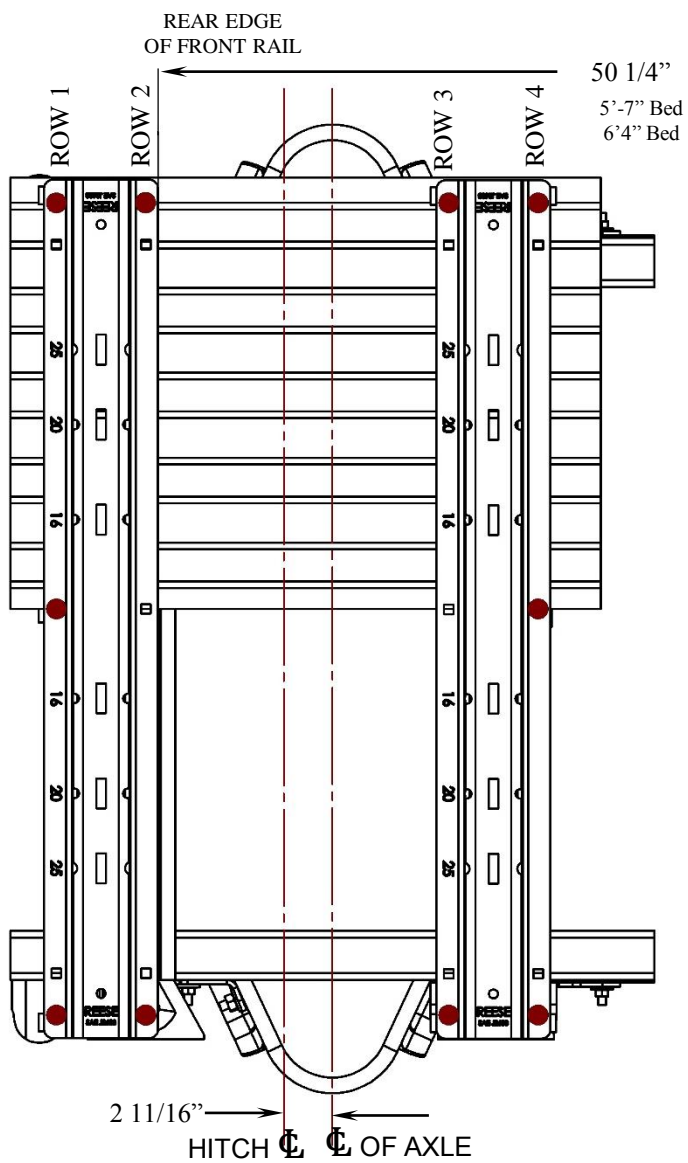


Figure 2

ITEM#	DESCRIPTION	QTY	ITEM#	DESCRIPTION	QTY	ITEM#	DESCRIPTION	QTY
1	DRIVER SIDE FRONT BRACKET	1	7	BLOCK - 1 X 3 X 1/4	3	13	TUBE SPACER - 3/4 O.D. X 2.6"	2
2	PASSENGER SIDE FRONT BRACKET	1	8	BLOCK - 1-1/2 X 3 X 1/4	2	14	BOLT CARRIAGE - 1/2-13 X 4-1/2" GR8	2
3	DRIVER SIDE REAR BRACKET	1	9	WASHER CONICAL - 7/16	8	15*	(BOLT CARRIAGE - 1/2-13 X 1-3/4 GR8)	8*
4	PASSENGER SIDE REAR BRACKET	1	10	NUT - 7/16-14	8	16*	(WASHER CONICAL - 1/2")	10*
5	BLOCK - 7/8 X 1-1/2- X 1/4	6	11	BOLT CARRIAGE - 1/2-13 X 1-3/4 GR8	2	17*	(NUT - 1/2-13 GR8)	10*
6	BOLT - CARRIAGE 7/16-14 X 1-1/2	7	12	BLOCK - 1 X 1-1/2 X 5/16	2	18*	(BLOCK - U - 1 X 2 X 5/16")	8*
						19	WASHER CONICAL - 1/2"	2
						20	NUT - 1/2-13 GR 2H (8)	2

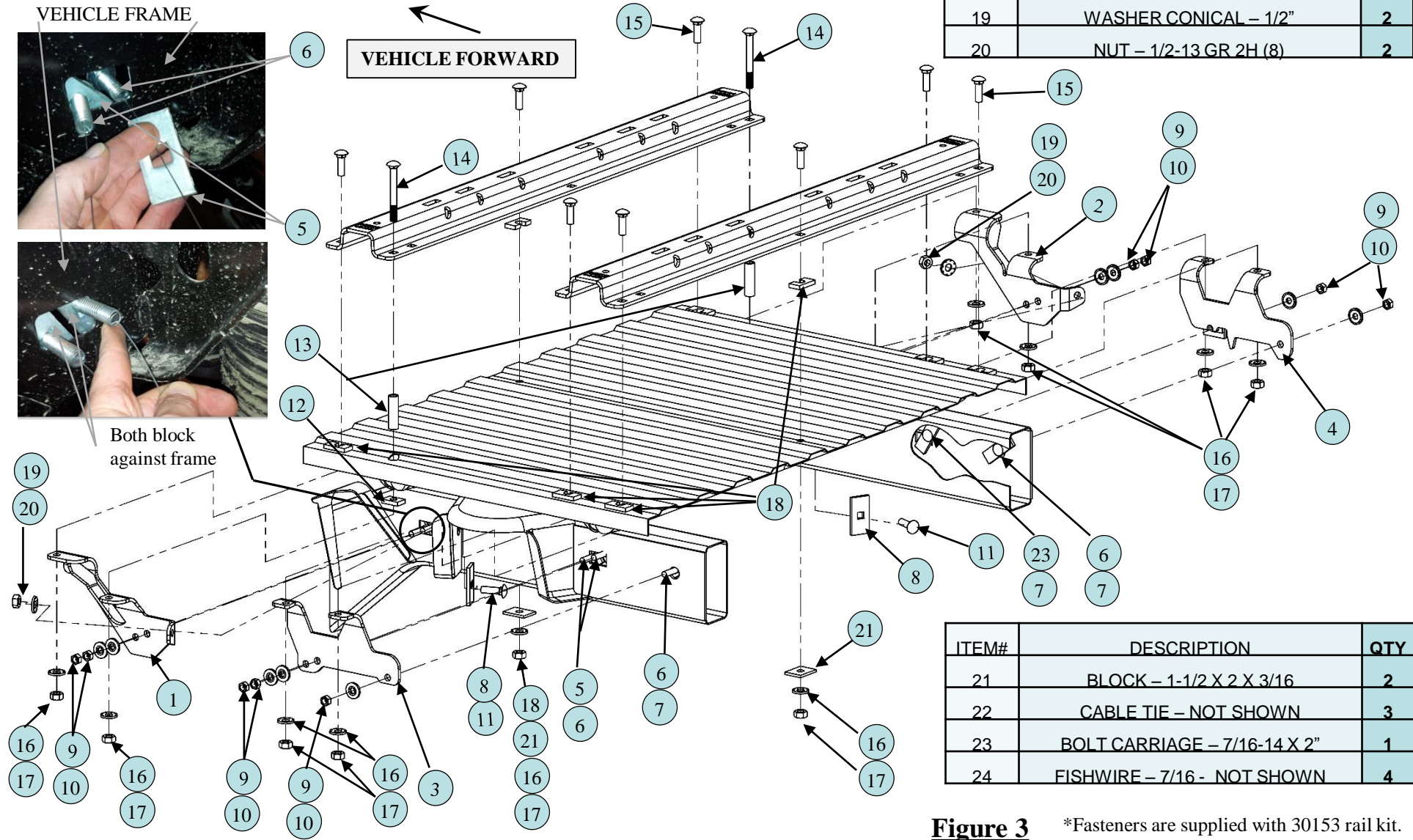
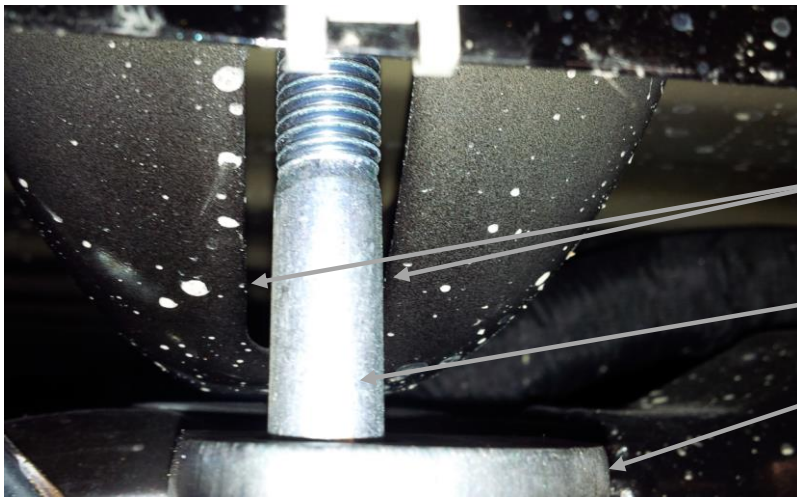


Figure 3 *Fasteners are supplied with 30153 rail kit. Not all fasteners are used

Figure 4 – Row 2 bolt location in bed crossmember

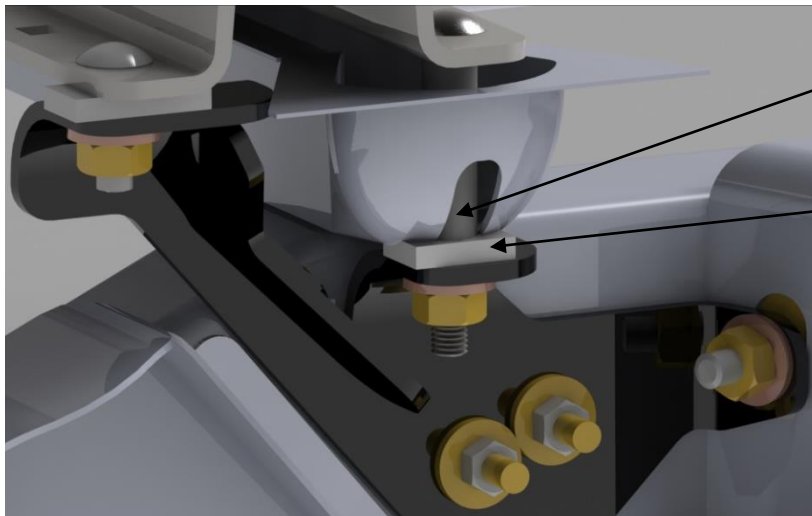


AREA TO ENLARGE SLOT
FOR TUBE SPACER (13)
STEP 7

CARRIAGE BOLT (14)
TEMPORARILY LOCATED
FROM THE BOTTOM TO
CHECK SLOT ALIGNMENT
ONLY

MOUNTING BRACKET

Figure 5 – D.S. Front and Rear Bracket Installed Shown without Bed



TUBE SPACER (13)

5/16" X 1" X 1/2"
SPACER BLOCK (12)

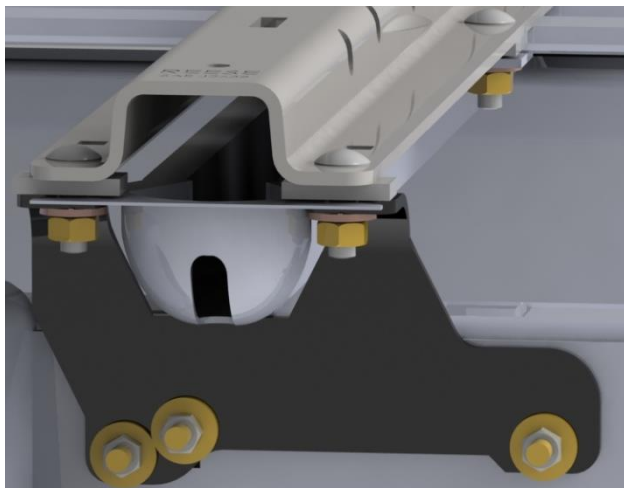
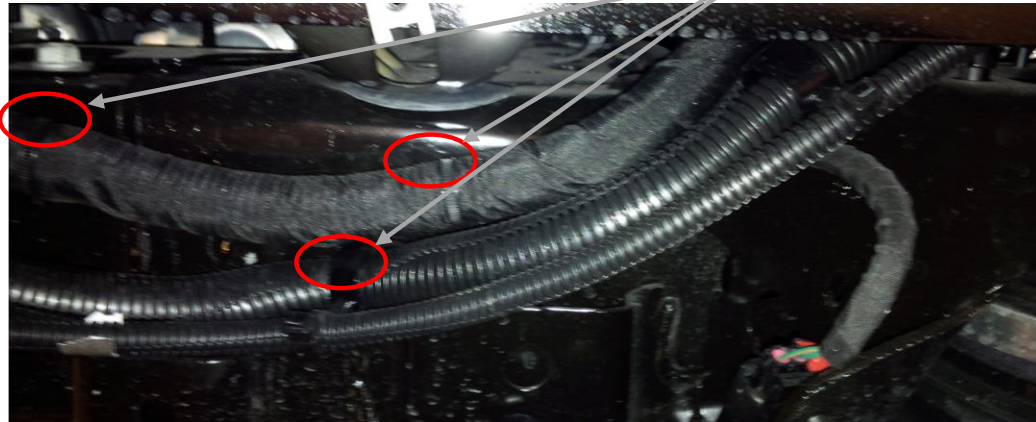


Figure 6 – Wire harness support location Rear Brackets



Driver's side - typical

Remove harness retainers



Passenger side – air suspension model shown

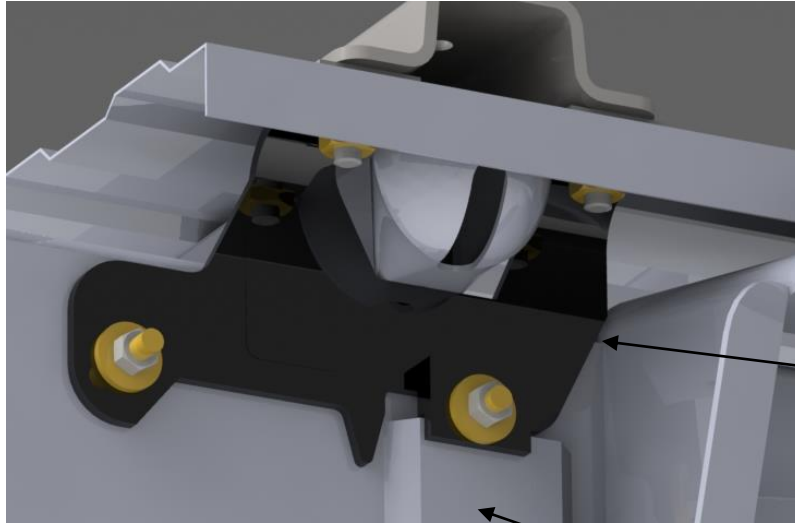
Figure 7 – fishwire location for rear mount



LOCATION TO FISH IN THE FASTENER (6 & 7)

Passenger side - coil spring model shown

Figure 8 – Passenger Side Rear Mount



PASSENGER SIDE REAR
MOUNTING BRACKET

SUSPENSION TRACK
BAR MOUNT

Owner Responsibilities

- Check mounting system bolt tightness once per year.
- Save warranty sheet and receipt for any future support.

COVER PAGE

56018 CUSTOM QUICK INSTALL MOUNTING KIT
FOR RAM 1500

NOTE!

Prior to installing product, please visit one of our websites to assure your kit contains the most recent revision to installation instruction and verify vehicle application.