

# Installation Instructions

## REESE® BASE MOUNTING RAIL KIT

**Part Number:**  
**50081**

Ford F-150 (1/2 Ton)  
2004-2014 F-150 Pickup Truck  
5-1/2', 6-1/2', and 8' Box

To be used on kit  
58058

**WARNING:** Under no circumstances do we recommend exceeding the towing vehicle manufacturers recommended vehicle towing capacity.

### READ ALL INSTRUCTIONS BEFORE STARTING THE INSTALLATION

#### Weight Carrying

MAX TONGUE WEIGHT 4,500 LBS (2,040 KG)

This product complies with SAE standard J-684

MAX GROSS TRAILER WEIGHT 18,000 LBS (8,160 KG)

#### Parts List

Item	Qty.	Description
A	1	Left Frame Bracket
B	1	Right Frame Bracket
C	2	5 <sup>th</sup> wheel Mounting Rail (Not included)
D	2	Multi-Thread U-Nut (Factory Hardware)
E	2	Axle Bumper (Factory Original Pare)
F	2	Axle Bumper Hex Bolt (Factory Hardware)

#### Hardware List

Item	Qty.	Description
1	1	Instruction Sheet
2	4	1/2" x 1 1/2" Carriage Bolt
3	4	1/2" x 13 UNC Nut
4	4	1/2" Conical Toothed Lock Washer
5	8	1/4" x 1 1/2" x 2" Spacer
6	4	1/4" x 1" x 2" Spacer
7	2	1/2" x 1" Large Round Washer
8	2	1/2" x 7/8" Small Round Washer
9	4	Wire Bolt Leader

#### Tools List

Item	Description
1	Center Punch
2	1/8" Drill Bit
3	1/2" Drill Bit
4	9/16" Drill Bit
5	5/8" Drill Bit
6	11/16" Drill Bit
7	3/4" Wrench and Socket
8	13mm Socket
9	150 ft-lbs Torque Wrench
10	Measuring Tape
11	Ratchet and Impact Gun
12	15/16" Wrench and Socket

- Do not install mounting rails over plastic bed liners. Plastic bed liners must be cut out of the way to provide metal to metal contact. Mounting rails may be installed on spray in liners.
- Use only bolts, nuts, and washers supplied to install this kit. All bolts and nuts are Grade 5 unless otherwise specified.
- These instructions are guidelines only, actual installation is the responsibility of the installer and the owner. Always measure truck and trailer before installing hitch to be sure that there is clearance at the cab and at the bumper to allow for turns.
- Do not install this product on or attempt to tow with a truck with a 5-1/2' bed unless a sidewinder pinbox coupler has been installed on the trailer.

**WARNING:** When installing to illustration 1 & 2, during drilling protect the fuel tank and filler tubes, brake lines and wire harness by placing a piece of metal between the box floor and potential components at risk on the driver's side. This will prevent drilling into these items.

## Installation Instructions

1. Lower and remove spare tire.
2. Remove the Axle Bumper bolt (F), Axle bumper (E) and Multi-Thread U-nut (D) from the under side of the frame on driver side and passenger side of the vehicle and keep the Axle Bumpers and Hardware.
3. *Place one mounting rail in the box of the truck, using your tape measure, center the rail between the weld seams on the length of the truck box floor and the proper distance from the rear edge of the truck box as illustrated for options 1 and 2.*
4. Mark and center punch the holes as per the illustrations. Move the rail out of the way and drill each position with a 1/8" drill bit. **Warning: When Drilling holes be aware of potential risks to vehicle components and make appropriate safe guards to protect them from damage.**
5. Loosely install the frame brackets using the appropriate hardware and tighten hand tight (See illustration).
  - Starting with the front mounting hole first, insert the head of the bolt leader through the 1 inch diameter mounting hole on the side of the truck frame and out through the 1 inch square access hole in the bottom of the frame.
  - Slide the 1 inch washer (7) over the head of the bolt leader.
  - Slide the spacer (6) over the head of the bolt leader and attach the 1/2 x 1-1/2" inch bolt (2)
  - Push the hardware up into the frame through the 1 inch square hole.
  - With the order end of the bolt leader, thread it through the back side of the frame bracket and gently pull on the end of the bolt leader so that the hardware moves through the frame and into position in the frame bracket.
  - Rotate the frame bracket away from the frame slightly and look to make sure the 1 inch bushing has engaged the frame properly.
  - Install the 1/2 inch lock washer (4) and 1/2 inch nut (3). (hand tighten only)
  - Repeat process for the rear hole in the frame brackets using the 7/8 inch washer (8).
6. Check that the 1/8 inch drilled holes align with the slots of the frame bracket.
7. Enlarge the 1/8 inch drilled holes to 9/16".
 

**Warning: When drilling holes be aware of potential risks to vehicle components and make appropriate safe guards to protect them for damage.**
8. Reposition the mounting rail over the holes.
9. install the 1/2" x 2 inch carriage bolts with the U-shaped spacer to be located in the corrugation between the box and the mounting rail. This insures a metal to metal contact. Attached with spacers (5), washers (4), and hex nuts (3) as per the illustrations and tighten snug to keep the mounting rail from moving.
10. Place the unassembled 5<sup>th</sup> wheel saddles/slider/goose into the already installed mounting rail. Position the second mounting rail with the saddles/slider/goose by inserting the tabs into the mounting rail and pushing the mounting rail tight towards the other mounting rail. Ensure that the mounting rail is centered between the weld seams on the length of the truck box floor. This will position the mounting rail in the correct location and ensure that the 5<sup>th</sup> wheel will have a snug fit to the truck. NOTE: If more than one hitch product will be used with the rails then both should be used at the same time to align the second rail. This will ensure that one product does not compromise the fit of the other.
11. Repeat steps 4, and 6.
12. After fully installing the custom attachment brackets, tighten the fasteners in the following sequence. **Note: Torque all 1/2 inch hardware to 72 ft-lbs torque all 5/8" hardware to 150ft. Lbs. First torque the mounting rails to the frame brackets and then torque the frame brackets to the truck frame.**
13. Reinstall the multi-Thread U-nuts (D), Axle Bumpers (E) and the Axle Bumper Hex Bolts (F) back onto the truck frame.
14. Reinstall spare tire.

**FORD F150 1/2 TON 2001-2014**

FRONT OF TRUCK  
L'AVANT DU  
CAMION

© **FIFTH WHEEL RAIL**  
**NOT INCLUDED**  
**LA RAIL DE LA**  
**SELLETTE**  
**N'EST PAS INCLU**

© **FIFTH WHEEL RAIL**  
**NOT INCLUDED**  
**LA RAIL DE LA**  
**SELLETTE**  
**N'EST PAS INCLU**

FROM THE RAIL KIT

INSERT HARDWARE INTO  
FRAME WITH BOLT LEADER  
INSÉRER LA  
QUINCAILLERIE DANS LE  
CHASSIS A L'AIDE D'UN FIL DE  
FER

REMOVE FOR ACCESS  
ENLEVER POUR AVOIR ACCÈS

**DETAIL -Z-**

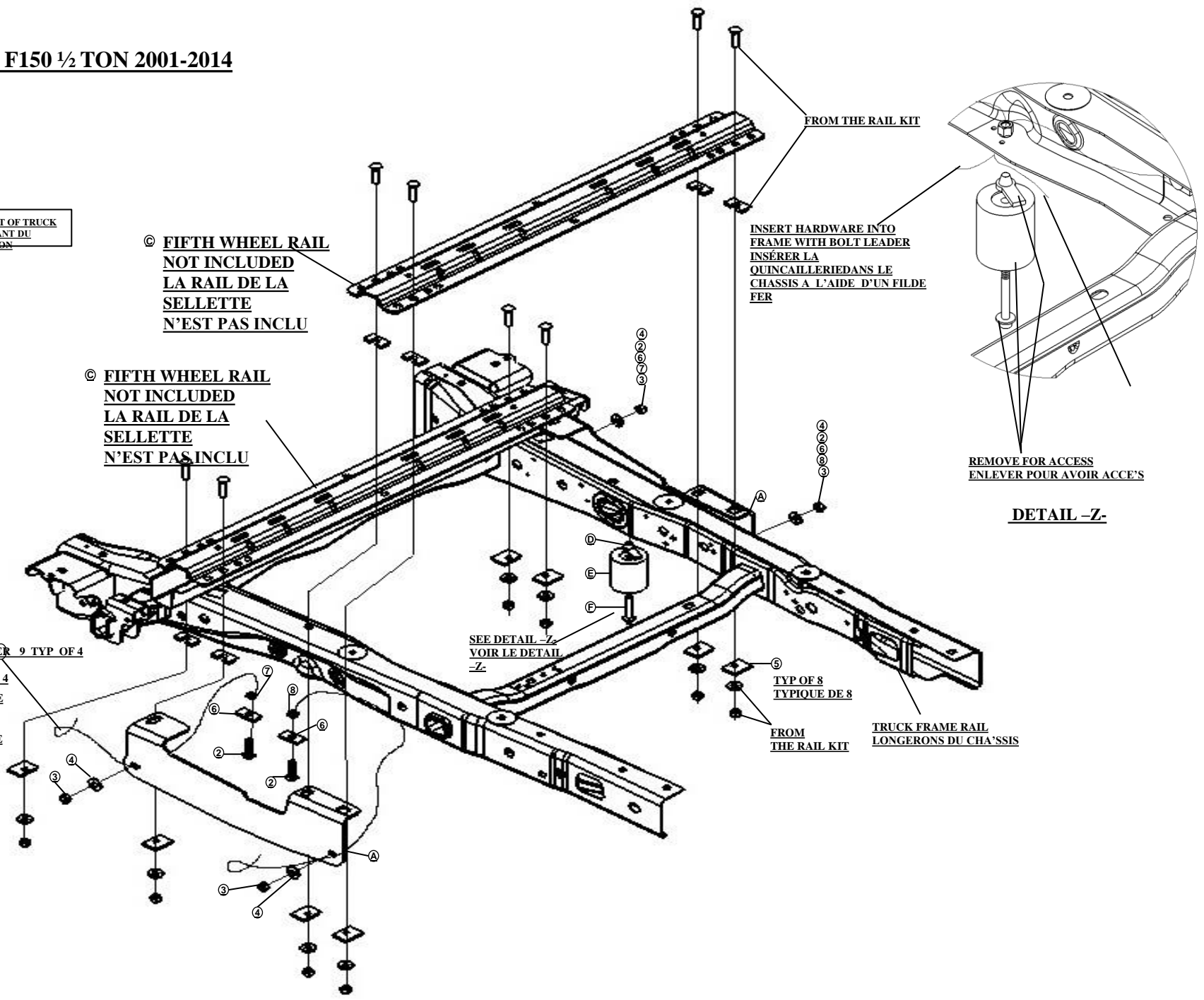
BOLT LEADER 9 TYP OF 4  
FIL DE FER  
TYPIQUE DE 4

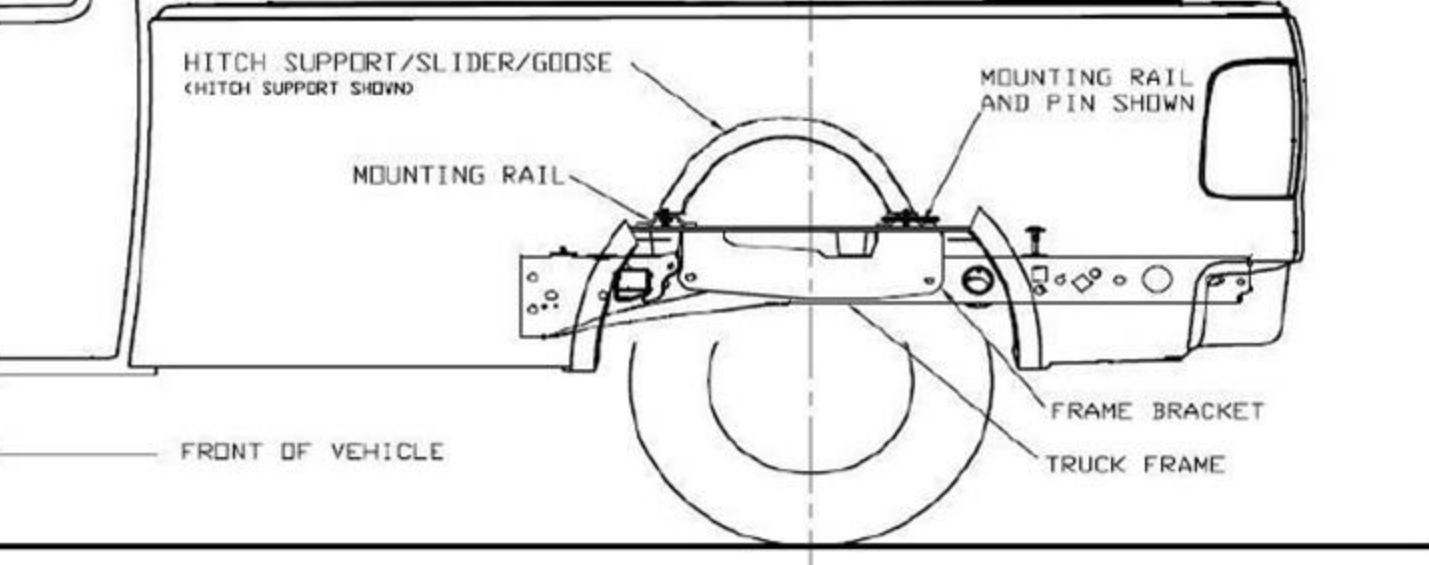
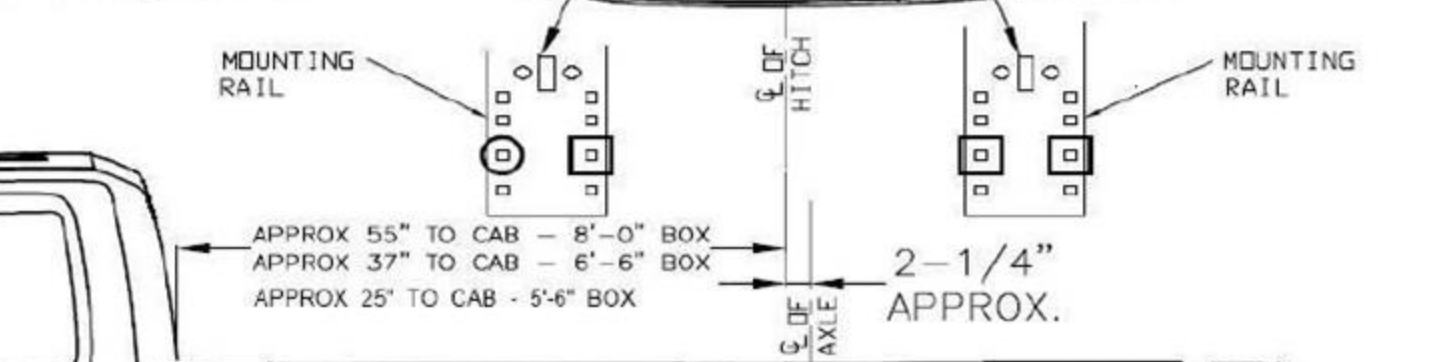
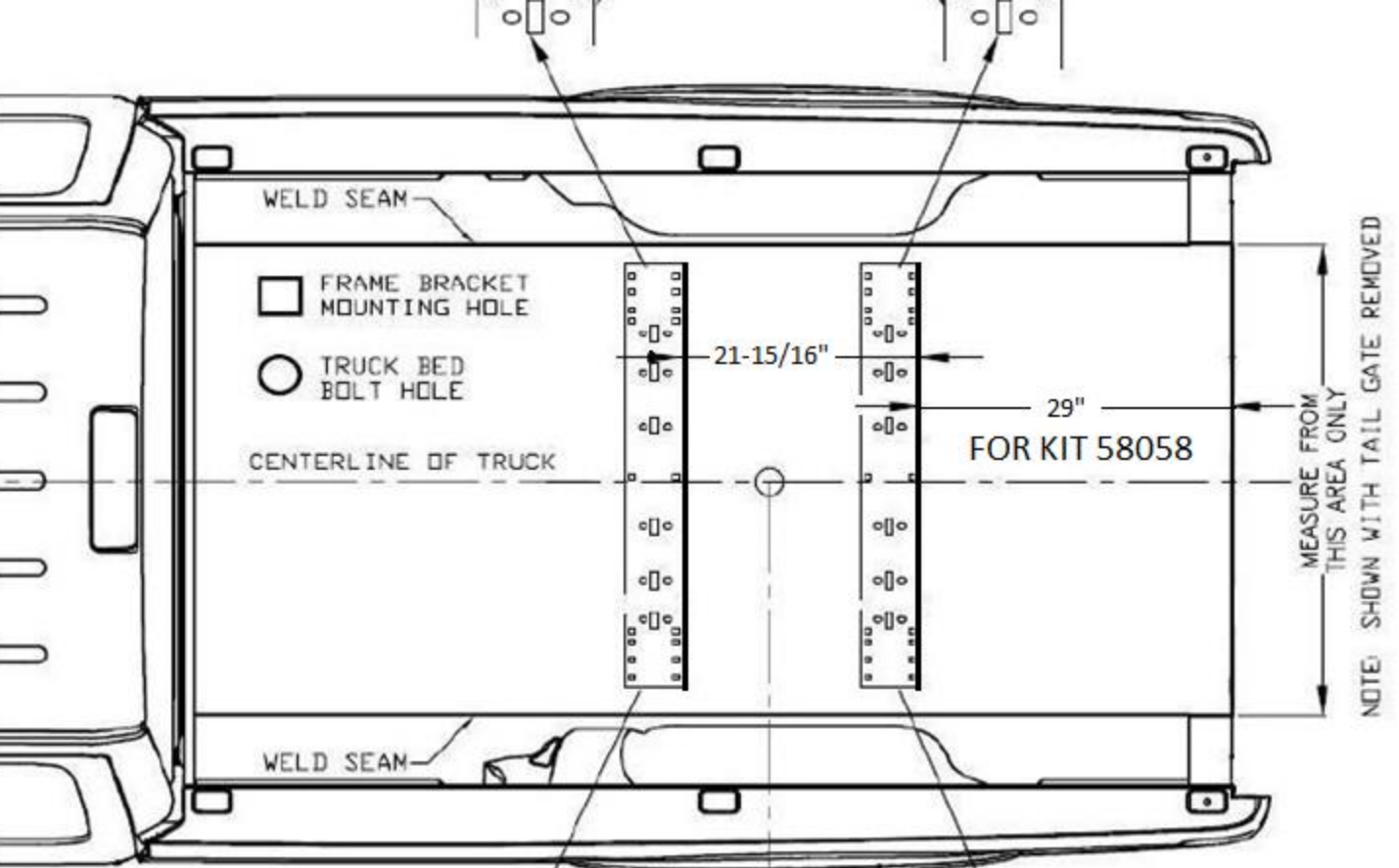
PULL HARDWARE  
TROUGH FRAME  
TIRER LA  
QUINCAILLERIE  
AUTRAVERS DU  
CHA'SSIS

SEE DETAIL -Z-  
VOIR LE DETAIL  
-Z-

5  
TYP OF 8  
TYPIQUE DE 8  
FROM  
THE RAIL KIT

TRUCK FRAME RAIL  
LONGERONS DU CHA'SSIS





## **For Installers**

1. REESE® Custom quick install mounting kit for 30153 REESE® rails kit only.
2. Do not install mounting rails over plastic bed liners. Plastic bed liners must be cut out of the way. Base rails may be installed on spray in liner.  
**Note:** Consult installer for recommended curing time.
1. Use only HORIZON GLOBAL AMERICA, INC. supplied bolts, nuts, and washers to install this kit. All bolts are Grade 8 hardware, unless otherwise noted.
2. See that owner receives and fills out warranty information page.
3. Provide these instructions to owner.

## **Owner Responsibilities**

- Do not exceed vehicle or mounting system rating.
- Check mounting system bolt tightness once per year.
- Save warranty sheet and receipt for any future support.