



Installation Instructions REESE® Pop-In™ Ball and Safety Chain Attachment

Part Number(s):

30948

WARNING: Under no circumstances do we recommend exceeding the towing vehicle manufacturers recommended vehicles towing capacity. Failure to follow instructions for installation and use may cause property damage, injury or death.

READ ALL INSTRUCTIONS BEFORE STARTING THE INSTALLATION OR USE

DEALER/INSTALLER:

- (1) Provide this Manual to end user.
- (2) Physically demonstrate procedures in this Manual to end user.
- (3) Have end user demonstrate that he/she understands procedures.

END USER:

- (1) Read and follow this Manual every time you use Pop-in™ Ball.
- (2) Save this Manual for future reference.
- (3) Pass on copies of Manual to any other user or owner of Pop-in™ Ball.

What's Included:

1. Pop-In™ Gooseneck Ball – QTY 1
2. Safety Chain Attachment – QTY 2
3. Gooseneck Cover – QTY 1
4. Storage Bag – QTY 1

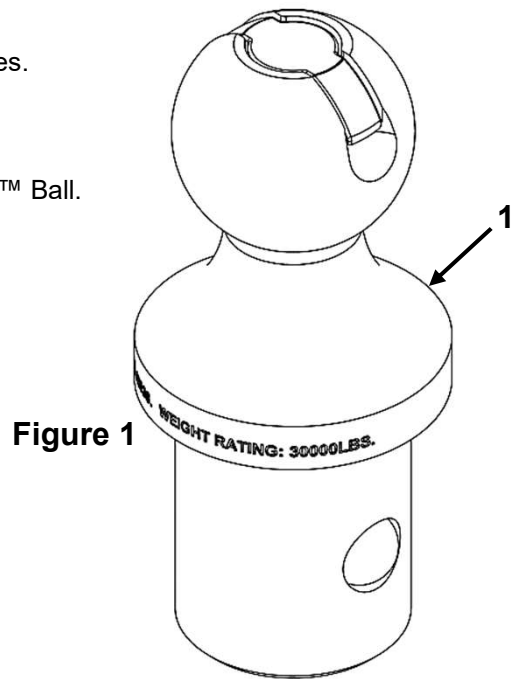
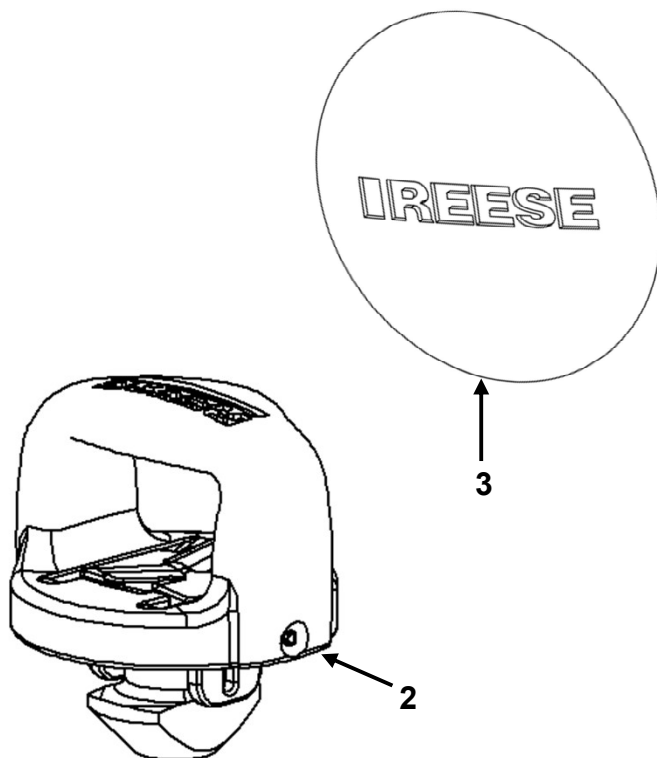


Figure 1



Installation Instructions

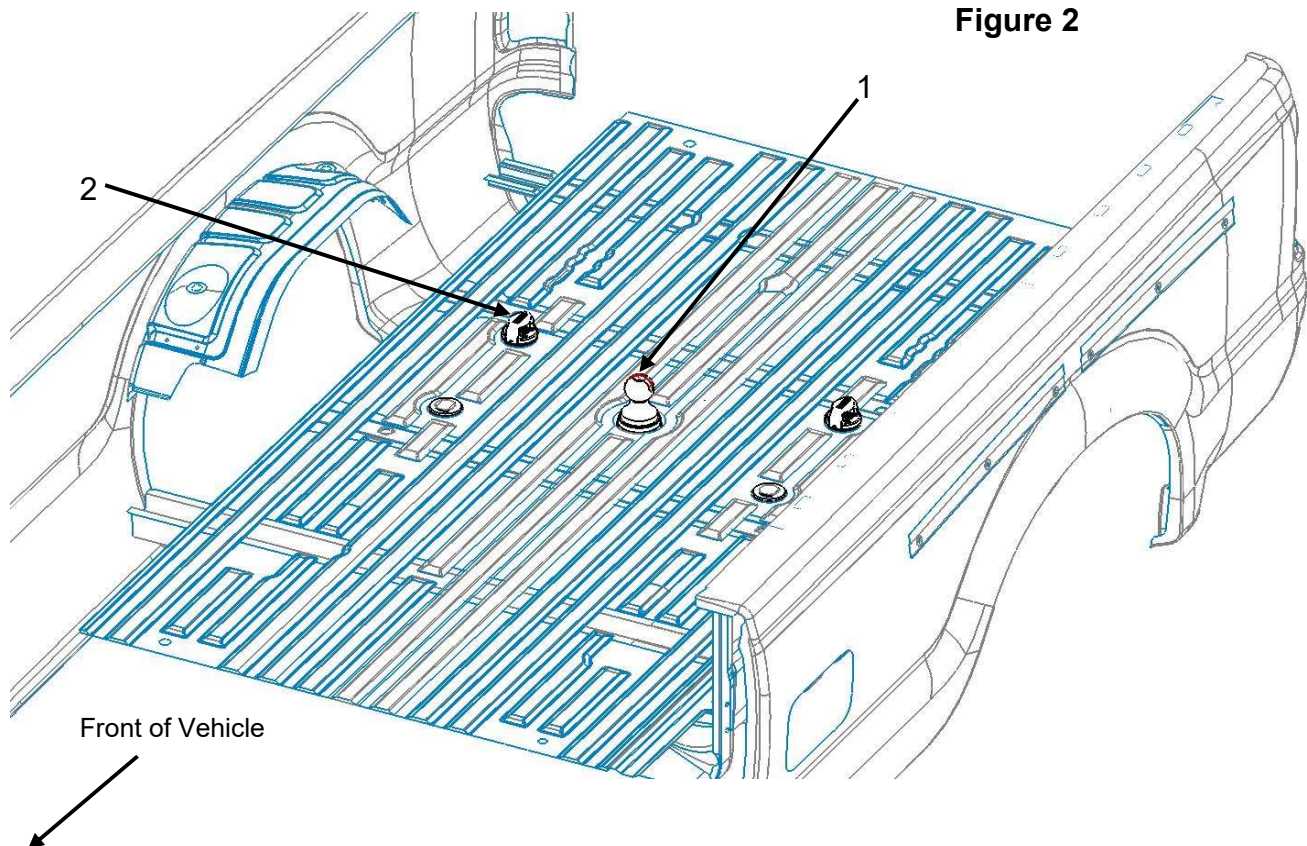
REESE® Pop-In™ Ball and Safety Chain Attachment

WARNING

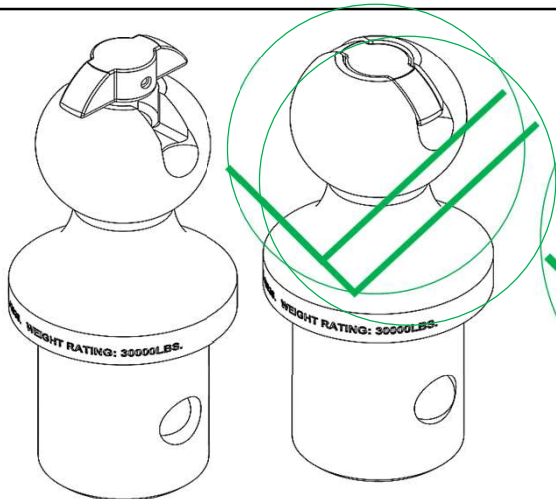
Failure to check and follow tow ratings could result in tow vehicle damage or truck and trailer separation while towing.

- Trailer and its contents together must not exceed truck, hitch and/or trailer tow ratings.
- Towing vehicle must have a manufacturer's rated towing capacity equal to or greater than the gross trailer weight (dry weight of the trailer plus payload of the trailer).
- Gross weight of trailer must not exceed 30,000 pounds.
- Gooseneck Ball vertical weight of trailer (pin weight) must not exceed 6,000 pounds.
- Ensure the Gooseneck Ball is properly locked into underbed hitch. The handle must be fully seated within the slot in the Gooseneck Ball.

1. Check all the boxes for all the components listed in Figure 1 and become familiar with component terminology.
2. To install Pop-In™ Gooseneck Ball – Lift handle in center of the ball and rotate 90 degrees (see Figure 3). Insert Gooseneck ball assembly into the receiver tube in the bed of the truck with the ball bearings oriented toward the sides of the truck bed, turn the center handle 90 degrees so that it drops into the slot in the top of the ball. Verify that the ball is locked by rotating the ball 90 degrees and ensure that the handle is not proud of the top of the gooseneck ball. If the center handle is not fully **locked** (does not retract fully), rotate the ball until the handle fully seats itself in the slot (see Figure 4).
3. To install the Safety Chain Attachment – Place the Safety Chain Attachment on top of the quarter turn puck in the underbed (see Figure 8). Rotate the Safety Chain Attachment 90 degrees until the center lock drops into place (see Figure 6). To remove the Safety Chain Attachment, lift the center lock and rotate the complete assembly 90 degrees (see Figure 7).
4. When not using the Pop-In™ Gooseneck Ball place it in the supplied storage bag (4) and put the gooseneck cover (3) in its place (see Figure 9).

Figure 2

Installation Instructions REESE® Pop-In™ Ball and Safety Chain Attachment



**Figure 3 –
Unlocked**

**Figure 4 –
Locked**

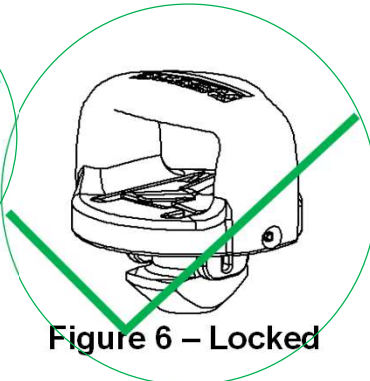


Figure 6 – Locked

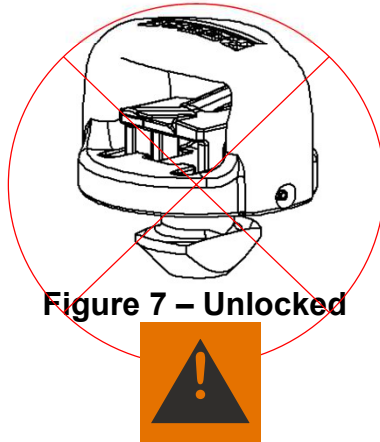
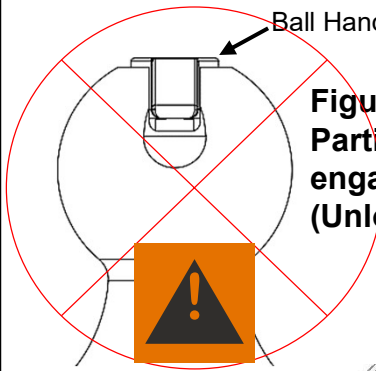


Figure 7 – Unlocked



**Figure 5 –
Partially
engaged
(Unlocked)**

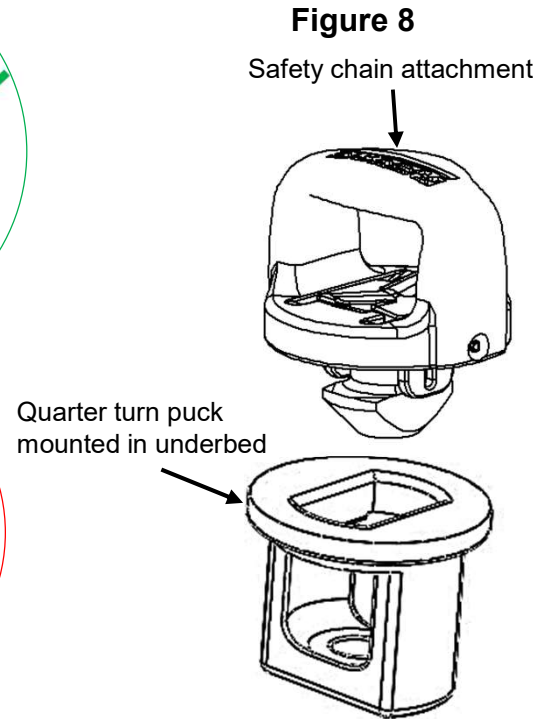
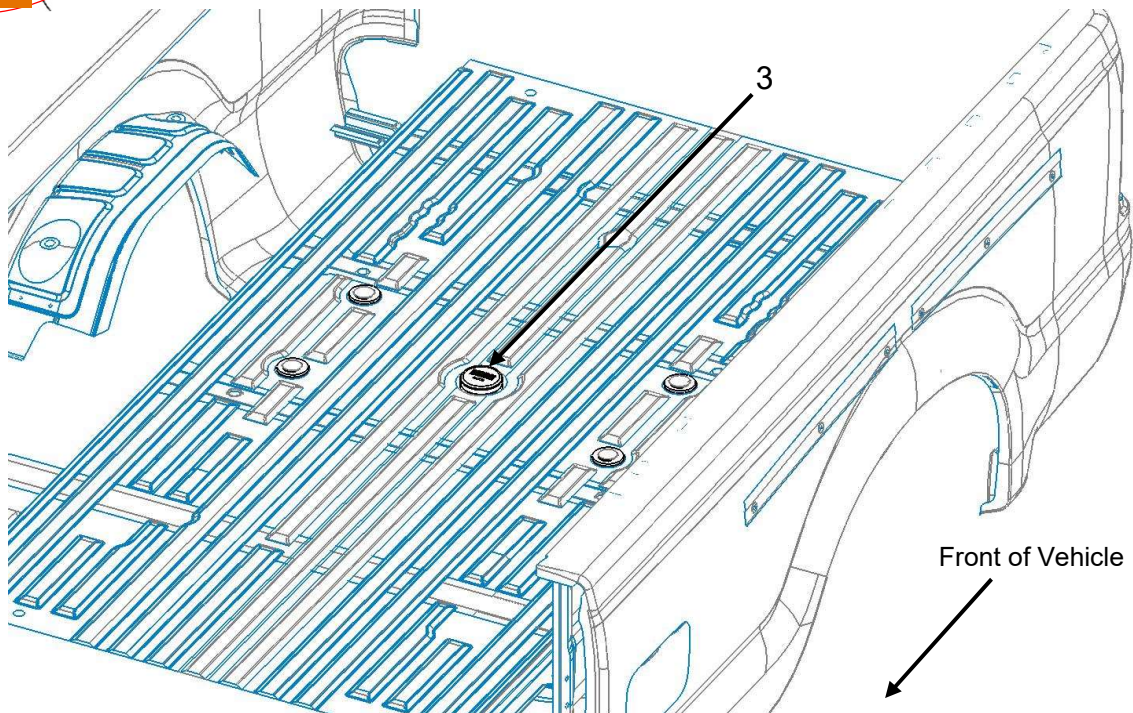


Figure 8

Safety chain attachment

Quarter turn puck
mounted in underbed

Figure 9 – Center cover plug installed



Front of Vehicle



Installation Instructions REESE® Pop-In™ Ball and Safety Chain Attachment

Part Number(s):

30948

REESE Gooseneck Hitch System IMPORTANT INFORMATION ON TOWING



Failure to heed warnings and follow instructions may result in serious personal injury or death, vehicle crash, and/or property damage.

- Do not modify.
- Do not tow one trailer behind another, which may cause loss of control.

TOWING EQUIPMENT OWNERS

Make sure all operators of your equipment read and understand this information before towing. Save for reference. This will help you properly use and maintain your towing equipment. Refer to owner's manuals for your tow vehicle, trailer and other parts of your towing system. Learn the capabilities and limitations of each part. GROSS TRAILER WEIGHT and VERTICAL LOAD are the two most important items to consider.

THESE WEIGHTS MUST NEVER EXCEED THE LOWEST RATING OF ANY PART OF YOUR TOWING SYSTEM.

GROSS TRAILER WEIGHT is the weight of the trailer plus cargo. Measure GROSS TRAILER WEIGHT by putting the fully loaded trailer on a vehicle scale. **VERTICAL LOAD** is the downward force exerted on the ball by the trailer coupler. Use a vehicle scale to measure **VERTICAL LOAD** with the fully loaded trailer on a level surface and the coupler at normal towing height.

TRAILER COUPLERS

The coupler should be smooth, clean and lightly lubricated. Adjust per coupler manufacturer's instructions.

SAFETY CHAINS

Connect safety chains properly **EVERY TIME YOU TOW**. Attach securely through the chain loops provided so they can not bounce loose. Leave only enough slack to permit full turning. Too much slack may prevent chains from maintaining control if other connections separate.

TRAILER LIGHTS, TURN SIGNALS, ELECTRIC AND BREAKAWAY SWITCH CONNECTIONS

Make these safety-critical connections **EVERY TIME YOU TOW**, no matter how short the trip. Check operation, including electric brake manual control, before getting on the road.

TIRE INFLATION

Check often. Follow tow vehicle and trailer manufacturer's recommendations.

CHECK YOUR EQUIPMENT/REPLACE WORN PARTS

Check ball, coupler, chains, and all other connections **EVERY TIME YOU TOW**. Re-check at fuel and rest stops.

NO PASSENGERS IN TRAILER!

NEVER allow people in the trailer while towing, under any circumstances.

TRAILER LOADING

Place heavy objects on the floor ahead of the axle. Balance the load side-to-side. Secure it to prevent shifting. **NEVER** load the trailer rear heavy. **LOAD THE TRAILER HEAVIER IN THE FRONT, BUT NOT GREATER THAN TONGUE WEIGHT RATING OF THE HITCH.**

DRIVING

The additional weight of a trailer affects acceleration, braking and handling. Allow extra time for passing, stopping, and changing lanes. A gooseneck trailer requires a large turning radius as the trailer tracks to the inside of turns. Severe bumps can damage your towing vehicle, hitch and trailer. Drive slowly on rough roads. **STOP AND MAKE A THOROUGH INSPECTION IF ANY PART OF YOUR TOWING SYSTEM STRIKES THE ROAD. CORRECT ANY PROBLEMS BEFORE RESUMING TRAVEL.**