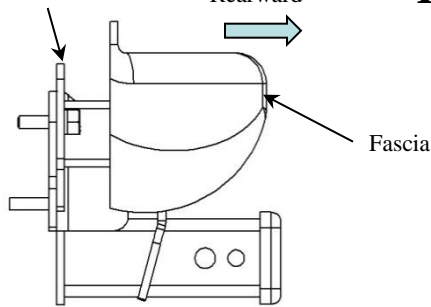


Bumper Structure

Rearward



Installation Instructions

Ram Promaster

Part Numbers:

51236

97236

**Do Not Exceed Lower of Towing Vehicle
Manufacturer's Rating or**

5000 LB (2268 Kg) Max Gross Trailer Weight

500 LB (227 Kg) Max Tongue Weight

Accessory Rating

C

Wiring Access Location: PC3, 4

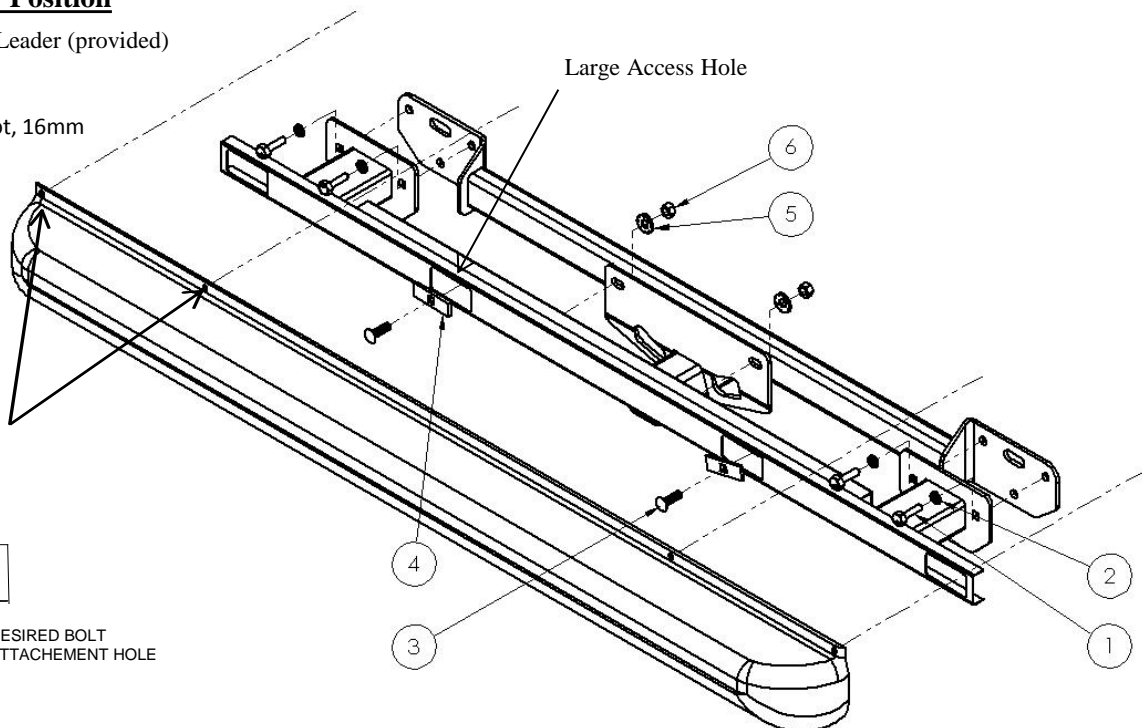
Hitch Shown In Proper Position

Equipment Required: Bolt Leader (provided)

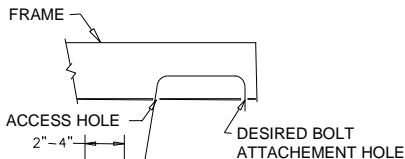
Fastener Kit: 51236F

Wrenches: T30, 3/4" crows foot, 16mm

Drill Bits: N/A



**Top Torx Head Bolts
Attaching Bumper to
Vehicle**



EXAMPLE OF BOLT LEADER PROCEDURE

Figure 1

①	Qty. (4)	Hex Bolt M10 X 1.25 X 40 CL10.9	④	Qty. (2)	Block .25 X 1.00 X 3.00
②	Qty. (4)	Lockwasher 7/16"	⑤	Qty. (2)	Conical Washer 1/2"
③	Qty. (2)	Carriage Bolt 1/2"-13 X 1.75 GR5	⑥	Qty. (2)	Hex Nut 1/2"-13 GR2

- Using the T30 torx bit, remove the eight bolts attaching the bumper fascia to the vehicle frame (there are four on top of the bumper and four below) and place out of the way. **NOTE: if there is a back up camera, disconnect the wires before completely removing the bumper fascia.**
- Using the 16mm wrench remove the four M10 bolts and the two hex nuts that are attaching the bumper structure to the vehicle. Give the bolts to the vehicle owner however the nut will be reused.
- Using the large access holes in the bumper structure and the included bolt leaders to install carriage bolts and blocks; install the hitch onto the removed bumper structure. It is important that the hitch mates up with the bracket holes on the sides of the bumper structure.
- Raise the whole bumper structure and hitch into place on the vehicle. Using the existing two hex nuts as well as the four M10 X 1.25 X 40mm bolts included attach the structure to the vehicle. **Note: if there is a back up camera pass the wires through the slot in the middle of the side attachment brackets.**
- Torque all hardware to the specification given below.
- Reattach the back up camera, if included and the bumper fascia.

Tighten all 1/2"-13 GR5 fasteners with torque wrench to 75 Lb.-Ft. (102 N*M)
Tighten all M10X1.25 CL10.9 fasteners with torque wrench to 71Lb.-Ft. (96 N*M)

Note: check hitch frequently, making sure all fasteners and ball are properly tightened. If hitch is removed, plug all holes in trunk pan or other body panels to prevent entry of water and exhaust fumes. A hitch or ball which has been damaged should be removed and replaced. Observe safety precautions when working beneath a vehicle and wear eye protection. Do not cut access or attachment holes with a torch.

This product complies with safety specifications and requirements for connecting devices and towing systems of the state of New York, V.E.S.C. Regulation V-5 and SAE J684.