

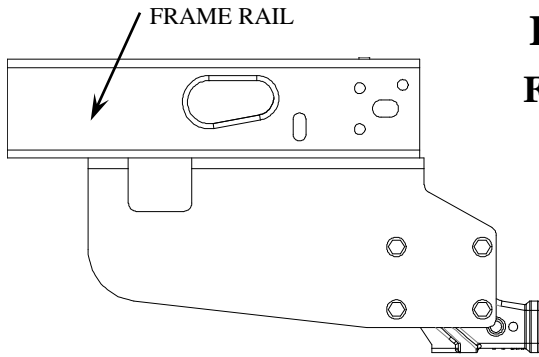
# Installation Instructions

## FORD CAB AND CHASSIS

Part Numbers:

**41943**

**96943**



### Hitch Shown In Proper Position

#### Equipment Required:

**Fastener Kit:** 41943F

**Wrenches:** 13/16", 7/8", 21mm, 22mm

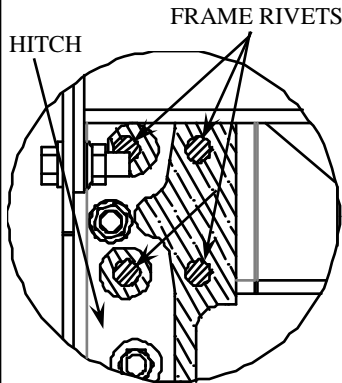
**Drill Bits:** 1/2", 9/16"

"C" CLAMPS

**Do Not Exceed Lower of Towing Vehicle  
Manufacturer's Rating or**

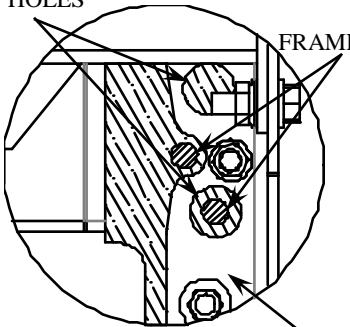
Hitch type	Max Gross Trailer WT (LB)	Max Tongue WT (LB)
Weight Distributing	<b>16,000 (7264 kg)</b>	<b>1,600 (726 kg)</b>
Weight Carrying Ball Mount	<b>16,000 (7264 kg)</b>	<b>2,400 (1090 kg)</b>

**Wiring Access Location:** PU3, PU4

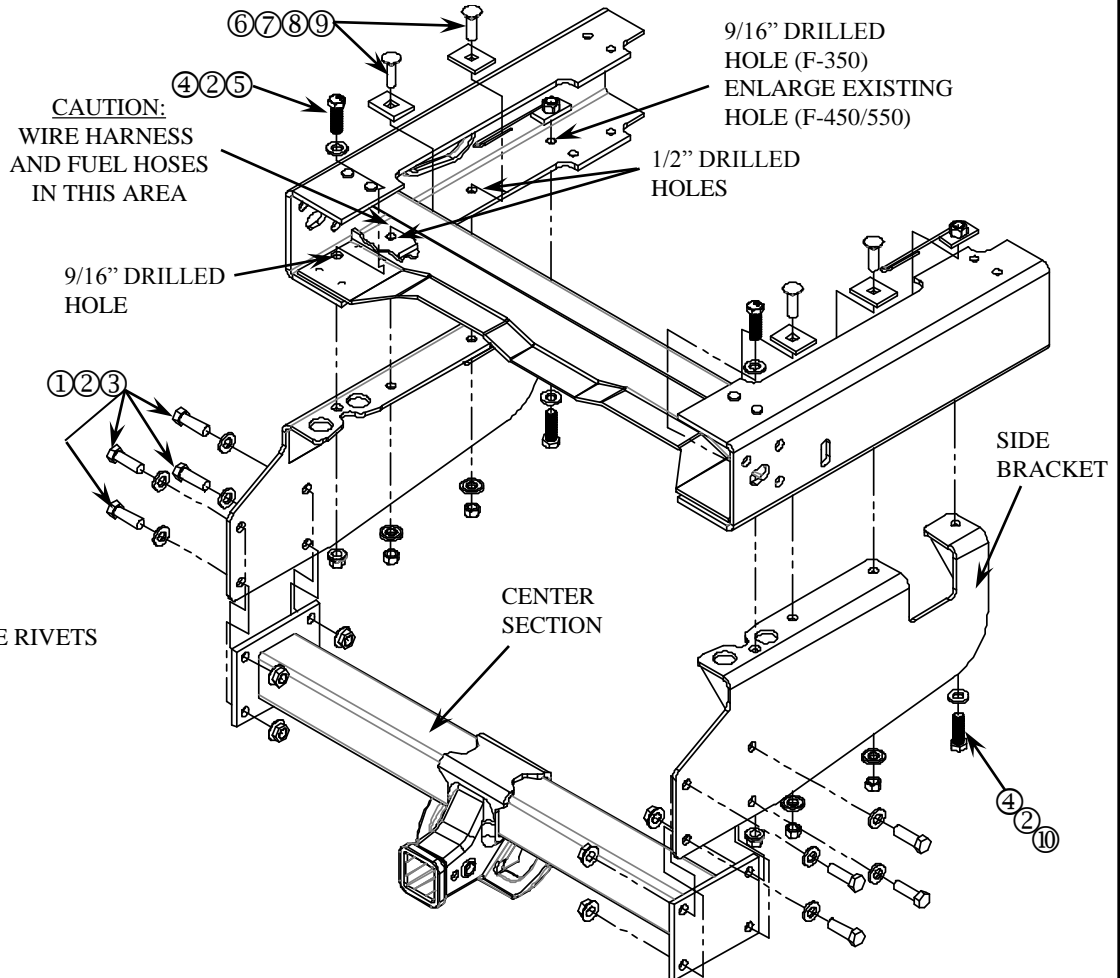


**FIGURE 3**  
(F-450 /550)

RIVET CLEARANCE HOLES



**FIGURE 2**  
(F-350)



**FIGURE 1**

**BOTTOM VIEW SHOWING PROPER LOCATION OF SIDE BRACKETS**

Note: check hitch frequently, making sure all fasteners and ball are properly tightened. If hitch is removed, plug all holes in trunk pan or other body panels to prevent entry of water and exhaust fumes. A hitch or ball which has been damaged should be removed and replaced. Observe safety precautions when working beneath a vehicle and wear eye protection. Do not cut access or attachment holes with a torch.

This product complies with safety specifications and requirements for connecting devices and towing systems of the state of New York, V.E.S.C. Regulation V-5 and SAE J684.

# Installation Instructions

## FORD CAB AND CHASSIS

Part Numbers:  
**41943**  
**96943**

**Do Not Exceed Lower of Towing Vehicle  
Manufacturer's Rating or**

Hitch type	Max Gross Trailer WT (LB)	Max Tongue WT (LB)
Weight Distributing	<b>16,000 (7264 kg)</b>	<b>1,600 (726 kg)</b>
Weight Carrying Ball Mount	<b>16,000 (7264 kg)</b>	<b>2,400 (1090 kg)</b>

①	Qty. (8)	HEX BOLT – 9/16" – 18 X 1.75" GR5	⑥	Qty. (4)	CARRIAGE BOLT – 1/2"-13 X 1.75 GR 8
②	Qty. (12)	WASHER – 9/16" HARDEN FLAT	⑦	Qty. (4)	BLOCK – 1/4" X 1-1/2" X 2"
③	Qty. (8)	FLANGED LOCKNUT – 9/16"-18	⑧	Qty. (4)	CONICAL WASHER – 1/2"
④	Qty. (4)	HEX BOLT – M14X1.5 X 45mm CL10.9	⑨	Qty. (4)	NUT – 1/2"-13 GR8
⑤	Qty. (2)	FLANGED NUT – M14X1.5 CL10	⑩	Qty. (2)	NUT BLOCK – M14X1.5 CL10



**WARNING:** THE FUEL FILLER HOSE AND ELECTRICAL WIRES ARE LOCATED ABOVE SOME OF THE HOLES ON THE DRIVER'S SIDE FRAME RAIL. A WOOD OR METAL SHEILD MUST BE PLACED BETWEEN THE FRAME AND THE FUEL TANK TO PREVENT PUNCTURING THE FUEL FILLER HOSE OR DAMAGING THE ELECTRICAL WIRES WHEN THE DRILL BREAKS THRU THE FRAME.

### **F350 MODELS**

1. RAISE SIDE BRACKETS UP INTO POSITION, ALIGNING THE RIVET CLEARANCE HOLE AND NOTCH IN BRACKET WITH RIVETS. CLAMP TO FRAME RAIL. (SEE FIGURE 2)

### **F450 MODELS**

1. RAISE SIDE BRACKET INTO POSITION AND ALIGN EXISTING HOLE IN FRAME WITH FORWARD ATTACHMENT HOLE. ALIGN THE RIVET CLEARANCE HOLES WITH OUTER MOST RIVETS. CLAMP TO FRAME RAIL. (SEE FIGURE 3)

### **ALL MODELS**

2. USE THE CENTER SECTION OF THE HITCH TO CHECK WIDTH BETWEEN SIDE BRACKETS AND ADJUST IF NECESSARY.
3. USING THE SIDE BRACKET AS A TEMPLATE, MARK THE HOLES ONTO THE FRAME AND TAKE DOWN THE SIDE BRACKETS TO ALLOW DRILL ACCESS. DRILL THE CENTER HOLES (ALL MODELS) USING A 1/2" DRILL. USE A 9/16" DRILL FOR THE FORWARD AND REARMOST ATTACHMENTS (ALL MODELS).
4. LOOSELY INSTALL FASTENERS FOR THE SIDE BRACKETS AS SHOWN IN FIGURE 1.

**NOTE: WIRING HARNESS MAY NEED TO BE RELOCATED TO ALLOW ACCESS TO CENTER ATTACHMENT HOLES ON THE DRIVER'S SIDE FRAME RAIL.**

5. RAISE CENTER SECTION INTO POSITION AND INSTALL FASTENERS AS SHOWN IN FIGURE 1.
6. TIGHTEN ALL FASTENERS TO THE BELOW TORQUE VALUE. THE M14 NUT BLOCK MAY REQUIRE A WRENCH TO HOLD IT UNTIL IT'S TIGHT AGAINST FRAME SURFACE.

Tighten all 1/2" fasteners with torque wrench to 110 Lb.-Ft. (149 N\*M)  
Tighten all 9/16" fasteners with torque wrench to 120 Lb.-Ft. (163 N\*M)  
Tighten all M14 fasteners with torque wrench to 148 Lb.-Ft. (201 N\*M)

Note: check hitch frequently, making sure all fasteners and ball are properly tightened. If hitch is removed, plug all holes in trunk pan or other body panels to prevent entry of water and exhaust fumes. A hitch or ball which has been damaged should be removed and replaced. Observe safety precautions when working beneath a vehicle and wear eye protection. Do not cut access or attachment holes with a torch.

This product complies with safety specifications and requirements for connecting devices and towing systems of the state of New York, V.E.S.C. Regulation V-5 and SAE J684.