

Installation Instructions

PART NUMBERS: 76194, 84194, CQT76194

⚠ WARNING

To prevent SERIOUS INJURY, DEATH or PROPERTY DAMAGE:

- **ALWAYS read, understand and follow warnings and instructions for your hitch BEFORE installation. Keep for future reference.**
- **DO NOT cut, weld or modify this receiver.**
- **CHECK all fasteners are tight and your hitch is securely mounted to your vehicle periodically.**
- **ALWAYS read, understand and follow all warnings and instructions for your vehicle and for other accessories you will use with your hitch BEFORE use.**
- **LOAD the trailer heavier in front.**
- **DO NOT exceed lower of towing vehicle manufacturer’s rating or:**

Hitch Type	Max Gross Trailer Weight	Max Tongue Weight
Weight Carrying	6000 lb. (2724kg)	900 lb. (409kg)
Weight Distributing	N/A	N/A

- **ALWAYS wear your seatbelt.**
- **SLOW DOWN when towing, NEVER exceed any posted speed limit.**
- **If EXCESS SWAY occurs, take your foot off the gas pedal and hold the steering wheel as steady as possible. DO NOT apply your brakes and DO NOT speed up.**

LIMITED LIFETIME WARRANTY

1. **Limited Lifetime Warranty (“Warranty”).** Horizon Global (“We”, “Us” or “Our”) warrants to the original consumer purchaser only (“You” or “Your”) that the product will be free from material defects in both material and workmanship, ordinary wear and tear excepted. The Warranty is valid only if (a) the products are returned to Us for inspection and testing; (b) Our inspection discloses to Our satisfaction that any alleged nonconformance are material and have not been caused by misuse, neglect, wear and tear, improper installation, unsuitable storage, improper repair, alteration, or accident; and (c) the products were installed, maintained and used in accordance with Our instructions. **THE WARRANTY IS MADE IN LIEU OF ALL OTHER WARRANTIES, EXPRESS OR IMPLIED (OTHER THAN THE WARRANTY OF TITLE AS PROVIDED BY THE UNIFORM COMMERCIAL CODE IN EFFECT IN MICHIGAN), INCLUDING WITHOUT LIMITATION, ANY WARRANTIES OF MERCHANTABILITY OR FITNESS FOR A PARTICULAR PURPOSE, SAID WARRANTIES BEING EXPRESSLY DISCLAIMED.**
2. **Obligations of Purchaser.** Any returned product that is replaced by Us becomes our property. You may be responsible for return shipping costs. Please retain your purchase receipt to verify date of purchase and that You are the original consumer purchaser. The product and the purchase receipt must be provided to Us in order to process Your Warranty claim.
3. **Exclusive Remedy.** Product replacement is Your sole and exclusive remedy under this Warranty. We shall not be liable for service or labor charges incurred in removing or replacing a product. **IN NO EVENT WILL WE BE RESPONSIBLE FOR ANY INDIRECT, SPECIAL, CONSEQUENTIAL OR PUNITIVE DAMAGES.**
4. **Assumption of Risk.** You acknowledge and agree that any use of the product for any purpose other than the specified use(s) stated in the product instructions is at Your own risk.
5. **Governing Law.** This Warranty gives You specific legal rights, and You also may have other rights which vary from state to state. This Warranty is governed by the laws of the State of Michigan, without regard to rules pertaining to conflicts of law. The state courts located in Oakland County, Michigan shall have exclusive jurisdiction for any disputes relating to this Warranty.

Installation Instructions

PART NUMBERS: 76194, 84194, CQT76194

Applications:

Years	Make	Models
2016-Current*	Volvo	XC90
2018-Current*	Volvo	XC60

*Visit our website for the most up to date information regarding application years and trim levels.

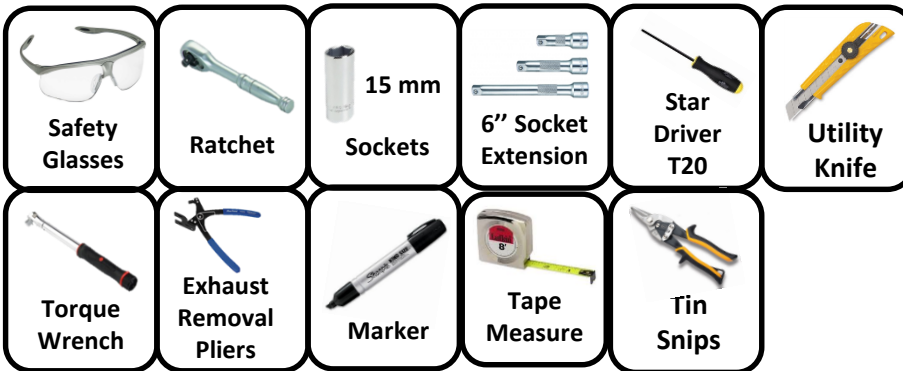
Installation Time: **65 min**

The time listed above is the average time for professional installers. If you do not feel comfortable performing this installation on your own or are in need of assistance, please contact a professional installer.



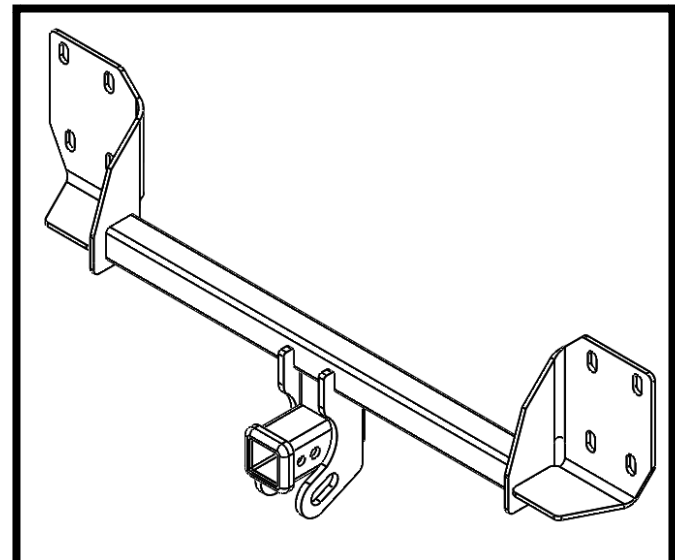
Representative Vehicle Photo

Equipment Required:



DO NOT EXCEED LOWER OF TOWING VEHICLE MANUFACTURER'S RATING OR:

Hitch Type	Max Gross Trailer Weight	Max Tongue Weight
Weight Carrying	6000 lb. (2724 kg)	900 lb. (409 kg)
Weight Distributing	N/A	N/A



Hitch Illustration

Always wear SAFETY GLASSES when installing hitch

Installation Instructions

PART NUMBERS: 76194, 84194, CQT76194

Fastener Kit: 76194F

①	Qty. (2)	Conical washer 7/16" Part# 01292007
②	Qty. (2)	Bolt M10 1.5x45, CL10.9

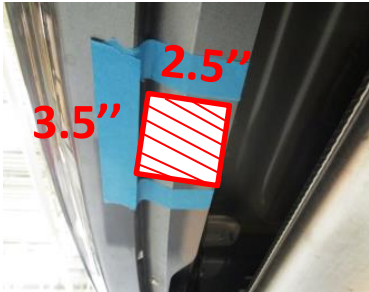


Figure 6



Figure 5

Use items 1 and 2 if accessible

Fasteners typical both sides

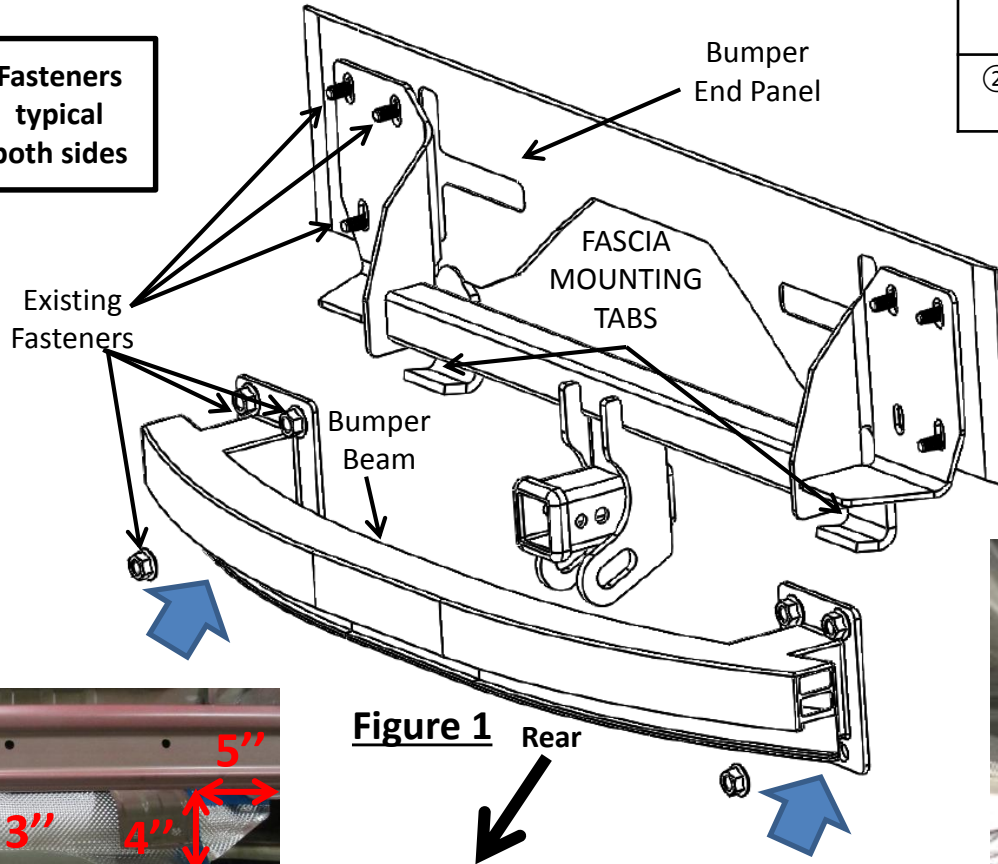


Figure 1 Rear



Figure 2



Figure 4

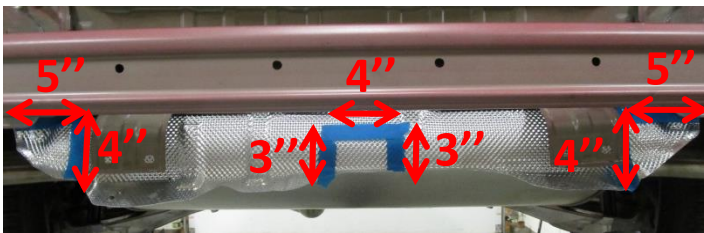
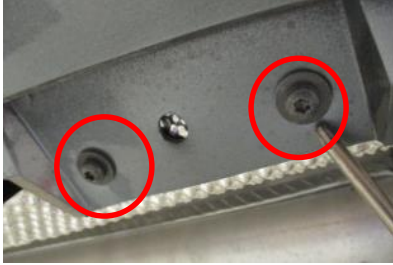


Figure 3

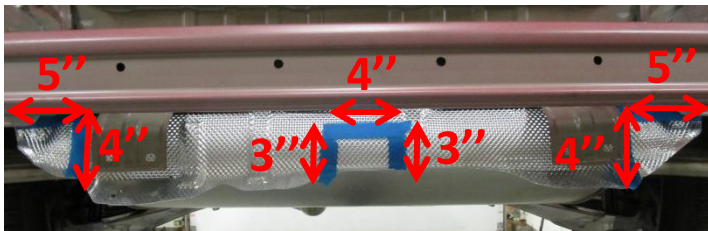
- Fascia and bumper beam removal** – Use T20 star driver to remove (4) screws from bottom fascia and (5 on XC90, 7 on XC60) screws from wheel well each side. Open the trunk (XC60 remove the bump stops) and gently remove the fascia. Unplug (2 on XC90, 1 on XC60) wirings from the fascia and carefully set the fascia aside. Use 15mm socket to remove (3) flange nuts from bumper beam each side and then remove bumper beam. Set the bumper beam and fasteners aside carefully. **NOTE:** Some models might have (4) flange nuts on bumper beam each side.
- Heat shield trimming** – Trim the area on the heat shield as shown in **Figure 3**.
- Bend Fascia Mounting Tabs**- On the XC90 skip this step. On the XC60 gently bend the fascia mounting tabs like **Figure 4** allowing clearance for the hitch.
- Hitch installation** - Raise the hitch into position and align bracket holes to the studs on end panel. Raise bumper beam to sandwich the hitch. Reuse flange nuts from bumper see **Figure 1**. If a fourth hole in the bumper is open use items ① and ② see **Figure 5**. XC60 before the hitch and bumper have been placed into position gently bend the fascia mounting tabs as needed to reattach the heat shield and fascia.
- Tighten all M10 fasteners with torque wrench to 53 Lb.-Ft. (72 N*M).** **▲ Proper torque is needed to keep the hitch secure to the vehicle when towing.**
- Fascia trimming and reinstallation** – Mark the center line on the fascia and trim the area on fascia as shown in **Figure 6**. Reinstall all fasteners, wirings, and fascia removed in step 1. After the fascia have been reinstalled gently bend the fascia mounting tabs as needed to align with the fascia.

Note: check hitch frequently, making sure all fasteners and ball are properly tightened. If hitch is removed, plug all holes in trunk pan or other body panels to prevent entry of water and exhaust fumes. A hitch or ball which has been damaged should be removed and replaced. Observe safety precautions when working beneath a vehicle and wear eye protection. Do not cut access or attachment holes with a torch. This product complies with safety specifications and requirements for connecting devices and towing systems of the state of New York, V.E.S.C. Regulation V-5 and SAE J684.

1. Fascia and bumper beam removal – Use T20 star driver to remove (4) screws from bottom fascia and (5 on XC90, 7 on XC60) screws from wheel well each side. Open the trunk (XC60 remove the bump stops) and gently remove the fascia. Unplug (2 on XC90, 1 on XC60) wirings from the fascia and carefully set the fascia aside. Use 15mm socket to remove (3) flange nuts from bumper beam each side and then remove bumper beam. Set the bumper beam and fasteners aside carefully. **NOTE:** Some models might have (4) flange nuts on bumper beam each side.



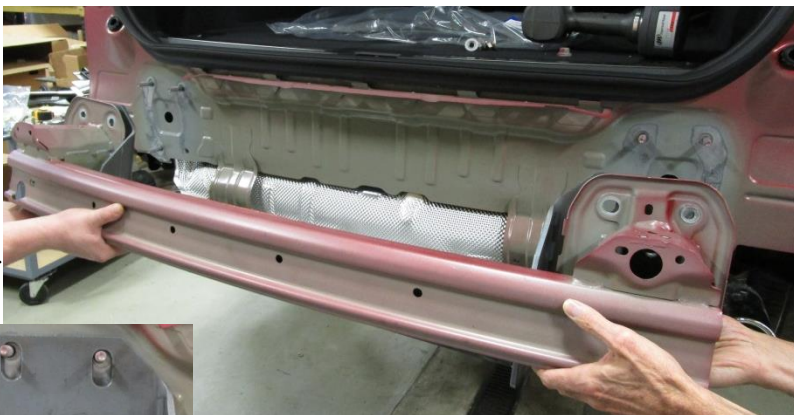
2. Heat shield trimming – Trim the area on the heat shield as shown in [Figure 3](#).



3. Bend Fascia Mounting Tabs– On the XC90 skip this step. On the XC60 gently bend the fascia mounting tabs like [Figure 4](#) allowing clearance for the hitch.



4. **(A) Hitch installation** - Raise the hitch into position and align bracket holes to the studs on end panel. Raise bumper beam to sandwich the hitch. Reuse flange nuts from bumper see **Figure 1**. If a fourth hole in the bumper is open use items ① and ② see **Figure 5**.



Use items 1
and 2 if
accessible

4. **(B)**After the hitch and bumper has been placed into position gently bend the fascia mounting tabs as needed to reattach the heat shield and fascia.



5. **Tighten all M10 fasteners with torque wrench to 53 Lb.-Ft. (72 N*M).**

⚠ Proper torque is needed to keep the hitch secure to the vehicle when towing.



6. **Fascia trimming and reinstallation** - mark the center line on the fascia and trim the area on fascia as shown in **Figure 6**. Reinstall all fasteners, wirings, exhaust hanger, and fascia removed in step 1,2.

