



# Installation Instructions

**PART NUMBERS: 76134, 84134,  
CQT76134**

## **! WARNING**

**To prevent SERIOUS INJURY, DEATH or PROPERTY DAMAGE:**

- **ALWAYS read, understand and follow warnings and instructions for your hitch BEFORE installation. Keep for future reference.**
- **DO NOT cut, weld or modify this receiver.**
- **CHECK all fasteners are tight and your hitch is securely mounted to your vehicle periodically.**
- **ALWAYS read, understand and follow all warnings and instructions for your vehicle and for other accessories you will use with your hitch BEFORE use.**
- **LOAD the trailer heavier in front.**
- **DO NOT exceed lower of towing vehicle manufacturer’s rating or:**

Hitch Type	Max Gross Trailer Weight	Max Tongue Weight
Weight Carrying	3500 lb. (1589 kg)	350 lb. (159 kg)
Weight Distributing	DO NOT USE WITH	SPRING BARS

- **ALWAYS wear your seatbelt.**
- **SLOW DOWN when towing, NEVER exceed any posted speed limit.**
- **If EXCESS SWAY occurs, take your foot off the gas pedal and hold the steering wheel as steady as possible. DO NOT apply your brakes and DO NOT speed up.**

## **LIMITED LIFETIME WARRANTY**

1. **Limited Lifetime Warranty (“Warranty”).** Cequent Performance Products, Inc. (“We”, “Us” or “Our”) warrants to the original consumer purchaser only (“You” or “Your”) that the product will be free from material defects in both material and workmanship, ordinary wear and tear excepted. The Warranty is valid only if (a) the products are returned to Us for inspection and testing; (b) Our inspection discloses to Our satisfaction that any alleged nonconformance are material and have not been caused by misuse, neglect, wear and tear, improper installation, unsuitable storage, improper repair, alteration, or accident; and (c) the products were installed, maintained and used in accordance with Our instructions. THE WARRANTY IS MADE IN LIEU OF ALL OTHER WARRANTIES, EXPRESS OR IMPLIED (OTHER THAN THE WARRANTY OF TITLE AS PROVIDED BY THE UNIFORM COMMERCIAL CODE IN EFFECT IN MICHIGAN), INCLUDING WITHOUT LIMITATION, ANY WARRANTIES OF MERCHANTABILITY OR FITNESS FOR A PARTICULAR PURPOSE, SAID WARRANTIES BEING EXPRESSLY DISCLAIMED.
2. **Obligations of Purchaser.** Any returned product that is replaced by Us becomes our property. You may be responsible for return shipping costs. Please retain your purchase receipt to verify date of purchase and that You are the original consumer purchaser. The product and the purchase receipt must be provided to Us in order to process Your Warranty claim.
3. **Exclusive Remedy.** Product replacement is Your sole and exclusive remedy under this Warranty. We shall not be liable for service or labor charges incurred in removing or replacing a product. IN NO EVENT WILL WE BE RESPONSIBLE FOR ANY INDIRECT, SPECIAL, CONSEQUENTIAL OR PUNITIVE DAMAGES.
4. **Assumption of Risk.** You acknowledge and agree that any use of the product for any purpose other than the specified use(s) stated in the product instructions is at Your own risk.
5. **Governing Law.** This Warranty gives You specific legal rights, and You also may have other rights which vary from state to state. This Warranty is governed by the laws of the State of Michigan, without regard to rules pertaining to conflicts of law. The state courts located in Oakland County, Michigan shall have exclusive jurisdiction for any disputes relating to this Warranty.



# Installation Instructions

PART NUMBERS: 76134, 84134, CQT76134

## Applications:

Years	Make	Models
-------	------	--------

2013-Current*	Toyota	Rav4
---------------	--------	------

\*Visit our website for the most up to date information regarding application years and trim levels.

## Installation Time:

2013-15 **20 Min.**

2016-Current\* **45 Min.**

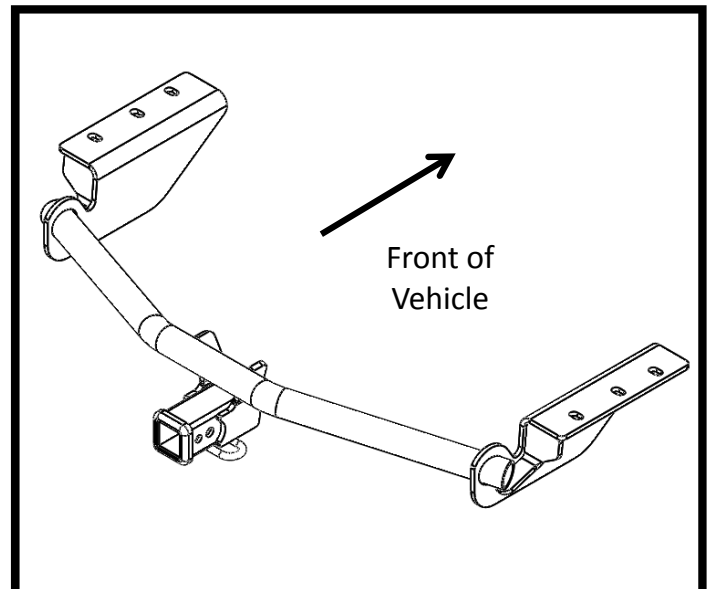
The time listed above is the average time for professional installers. If you do not feel comfortable performing this installation on your own or are in need of assistance, please contact a professional installer.

## Equipment Required:

Safety Glasses	Ratchet	10 mm 12 mm 17 mm 19 mm Sockets	Exhaust Removal Pliers <b>OR</b> Pry Bar	Small Philips Screwdriver	* Optional  Wire cutter	2013-15  Pliers
6" Socket Extension	Torque Wrench	Flat Head Screw Driver	Soapy water or small hole brush	Utility Knife <b>OR</b> Die Grinder	Tape	



Representative Vehicle Photo



Hitch Illustration

**DO NOT EXCEED LOWER OF TOWING VEHICLE MANUFACTURER'S RATING OR:**




Hitch Type	Max Gross Trailer Weight	Max Tongue Weight
Weight Carrying	3500 lb. (1589 kg)	350 lb. (159 kg)
Weight Distributing	DO NOT USE WITH	SPRING BARS

**Always wear SAFETY GLASSES when installing hitch**

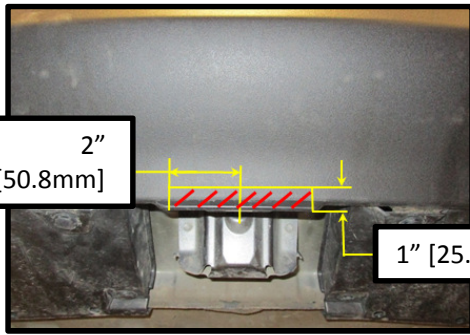
# Installation Instructions

**PART NUMBERS: 76134, 84134, CQT76134**

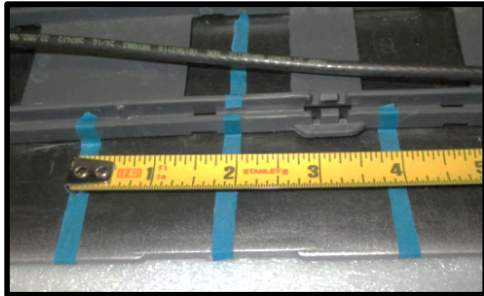
**Fastener Kit : 76134F**

①	Qty. (5)	Bolt M12x1.25x40 CL10.9	
②	Qty. (5)	Conical washer 1/2"	
③	Qty. (2)	Cable ties	

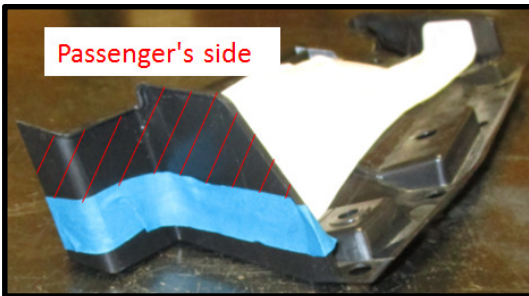
**Fascia trimming required -**  
**Note: Obtain owners permission before installing**  
**Appearance panel trimming**  
**or removal required**



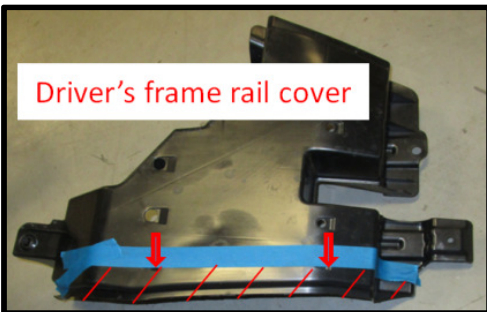
**Figure A**  
**2013-2015**  
**Fascia trimming required**



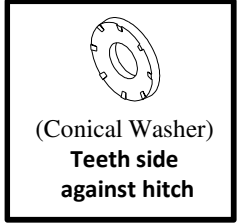
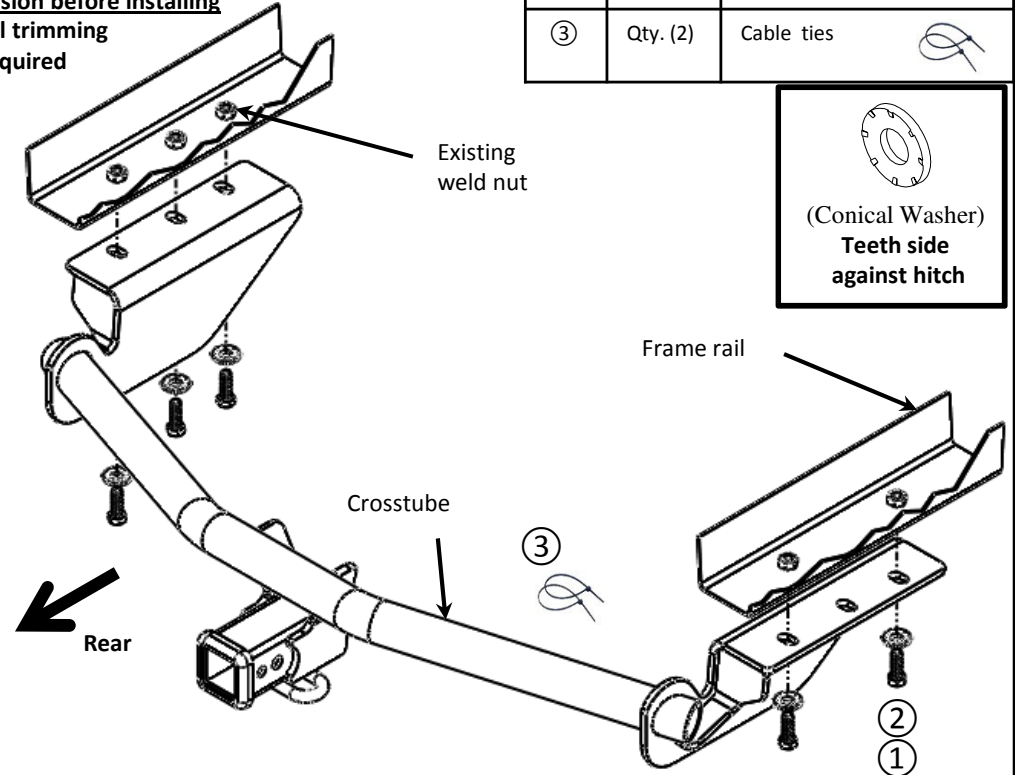
**Figure 1**  
**2016- Current**  
**Fascia trimming required**  
**See Step 12.**



**\* Optional**  
**Passenger's side – trim**  
**1-1/4" [31.75mm]**  
**down on long side**



**\* Optional**  
**Driver's side – trim**  
**along notches on**  
**underside**



Lift gate sensor reduced to this area on vehicles with the "HANDS-FREE, FOOT-ACTIVATED POWER LIFTGATE" option.

Note: check hitch frequently, making sure all fasteners and ball are properly tightened. If hitch is removed, plug all holes in trunk pan or other body panels to prevent entry of water and exhaust fumes. A hitch or ball which has been damaged should be removed and replaced. Observe safety precautions when working beneath a vehicle and wear eye protection. Do not cut access or attachment holes with a torch.

This product complies with safety specifications and requirements for connecting devices and towing systems of the state of New York, V.E.S.C. Regulation V-5 and SAE J684.



# Installation Instructions PART NUMBERS: 76134, 84134, CQT76134

Hitch installation on vehicle varies by year, follow the correct instruction per vehicle's year. Read through instruction prior to install.

Fascia trimming required - Note: Obtain owners permission before installing


Note: With the hitch installed on vehicle with "HANDS-FREE, FOOT-ACTIVATED POWER LIFTGATE" option it will work only in limited areas. See photo. Get owner approval before installation.

**Note: If necessary clean the threads to the existing weldnuts. Carefully run the M12 bolts into the weld nuts or use spiral wire brush to clean the threads.**

### Installation for 2013-2015 Toyota Rav4:

- A. Follow steps 1-6, and 8.
- B. **Fascia Trimming:** Trim fascia - locate center of fascia and mark 2" [50.8mm] each way, mark 1" [25.4] up from fascia edge – (check inside of fascia to confirm no wiring or other obstruction in way before cutting) See Figure 1A
- C. **Bend tab:** Bend tab on end of frame rearward about 20 degrees. Both sides
- D. **Hitch installation:** - Move fascia tabs out of the way and raise the hitch over the exhaust on passenger side, slide hitch under fascia (gently pull fascia out) position hitch over existing weldnuts and loosely install M12 bolts ① and conical washers ② into weldnuts.
- E. Follow steps 10-11, 14-15 as necessary.

### Installation for 2016- current Toyota Rav4:

- 1. **Mark centerline of appearance panel:** Mark centerline of appearance with marker or tape.
- 2. **Remove appearance panels:** If present, remove driver side plastic appearance panel removal - using flat head screwdriver and 10 mm socket to remove (2) plastic rivets and (1) flange nut from the panel. If present; remove additional plastic appearance panels (2) located between fascia and end panel both sides. Trim or return, additional panel to vehicle owner.
- 3. **Remove tie down:** Remove Tie down bracket - using 17 mm socket to remove (2) bolts from bracket. Return to vehicle owner.
- 4. **Disconnect electrical:** If present, disconnect the electrical wiring located on driver side rear quarter panel.
- 5. **Lower exhaust:** Remove (1) rubber isolator from exhaust rod on passenger side. Spraying a lubricant or soapy water on the metal hanger rod and the rubber isolator helps with removal. For additional clearance remove next rubber isolator. Support the exhaust system to prevent damage.
- 6. **Exhaust rod removal:** – Use 12 mm socket to remove (2) bolts that secure the exhaust rod near trunk pan. Return to vehicle owner.
- 7. **Fascia removal:** Remove using a 10mm socket (1) bolt from under the vehicle at bottom of wheel well, and (2) phillips screws with a small phillips screwdriver(each side). Open liftgate and remove (2) bolts with a 10mm socket. Gently pull up from the rear wheel well ,lower bumper panel each side, unclipping the tabs inside continue to gently remove along inside hatch covering. Lifting fascia up from bottom as needed. Carefully pulling the fascia away from the vehicle. If present disconnect any wiring harness or sensor from fascia. Both sides. Carefully set the rear fascia aside.
- 8. **Remove keyless entry antenna:** If present, using a 12mm socket remove the keyless entry antenna, second attachment point.
- 9. **Hitch installation:** - Raise the hitch over exhaust on passenger side and into position over existing weldnuts and loosely install M12 bolts ① and conical washers ② into weldnuts.
- 10. **Tighten all fasteners with torque wrench to 76 Lb.-Ft. (103 N\*M)**  **Proper torque is needed to keep the hitch secure to the vehicle when towing.**
- 11. **Relocate keyless entry antenna:** If removed, use cables ties ③ attach keyless entry antenna under crosstube of hitch in same basic area it was removed from.
- 12. **Trim fascia:** Trim fascia - locate center of fascia and mark 2" [50.8mm] each way, mark 1-3/4" [44.45] up from fascia edge – (if vehicle is equipped with kick sensor move wire out of the track to prevent cutting. (If cutting into track sensor area wire can be moved to outside then reset in track). See Figure 1B
- 13. **Reinstall fascia:** Starting from the center of the vehicle lineup and gently reinstall the rear fascia and all fasteners in reverse order step 7. (Note: reattach any wiring harness if removed)
- 14. **Reinstall exhaust:** Raise exhaust back into position and reattach rubber isolator/s. Remove exhaust support if used.
- 15. Trim or return appearance panel. See figures 1-3.

Note: check hitch frequently, making sure all fasteners and ball are properly tightened. If hitch is removed, plug all holes in trunk pan or other body panels to prevent entry of water and exhaust fumes. A hitch or ball which has been damaged should be removed and replaced. Observe safety precautions when working beneath a vehicle and wear eye protection. Do not cut access or attachment holes with a torch.

This product complies with safety specifications and requirements for connecting devices and towing systems of the state of New York, V.E.S.C. Regulation V-5 and SAE J684.