



# Installation Instructions

PART NUMBERS: 76116, 84116, CQT76116

## ⚠ WARNING

To prevent **SERIOUS INJURY, DEATH or PROPERTY DAMAGE:**

- **ALWAYS** read, understand and follow warnings and instructions for your hitch **BEFORE** installation. Keep for future reference.
- **DO NOT** cut, weld or modify this receiver.
- **CHECK** all fasteners are tight and your hitch is securely mounted to your vehicle periodically.
- **ALWAYS** read, understand and follow all warnings and instructions for your vehicle and for other accessories you will use with your hitch **BEFORE** use.
- **LOAD** the trailer heavier in front.
- **DO NOT** exceed lower of towing vehicle manufacturer’s rating or:

Hitch Type	Max Gross Trailer Weight	Max Tongue Weight
Weight Carrying	4000 lb. (1816 kg)	400 lb. (181 kg)
Weight Distributing	4500 lb. (2043 kg)	450 lb. (204 kg)

- **ALWAYS** wear your seatbelt.
- **SLOW DOWN** when towing, **NEVER** exceed any posted speed limit.
- If **EXCESS SWAY** occurs, take your foot off the gas pedal and hold the steering wheel as steady as possible. **DO NOT** apply your brakes and **DO NOT** speed up.

## LIMITED LIFETIME WARRANTY

1. **Limited Lifetime Warranty (“Warranty”).** Cequent Performance Products, Inc. (“We”, “Us” or “Our”) warrants to the original consumer purchaser only (“You” or “Your”) that the product will be free from material defects in both material and workmanship, ordinary wear and tear excepted. The Warranty is valid only if (a) the products are returned to Us for inspection and testing; (b) Our inspection discloses to Our satisfaction that any alleged nonconformance are material and have not been caused by misuse, neglect, wear and tear, improper installation, unsuitable storage, improper repair, alteration, or accident; and (c) the products were installed, maintained and used in accordance with Our instructions. **THE WARRANTY IS MADE IN LIEU OF ALL OTHER WARRANTIES, EXPRESS OR IMPLIED (OTHER THAN THE WARRANTY OF TITLE AS PROVIDED BY THE UNIFORM COMMERCIAL CODE IN EFFECT IN MICHIGAN), INCLUDING WITHOUT LIMITATION, ANY WARRANTIES OF MERCHANTABILITY OR FITNESS FOR A PARTICULAR PURPOSE, SAID WARRANTIES BEING EXPRESSLY DISCLAIMED.**
2. **Obligations of Purchaser.** Any returned product that is replaced by Us becomes our property. You may be responsible for return shipping costs. Please retain your purchase receipt to verify date of purchase and that You are the original consumer purchaser. The product and the purchase receipt must be provided to Us in order to process Your Warranty claim.
3. **Exclusive Remedy.** Product replacement is Your sole and exclusive remedy under this Warranty. We shall not be liable for service or labor charges incurred in removing or replacing a product. **IN NO EVENT WILL WE BE RESPONSIBLE FOR ANY INDIRECT, SPECIAL, CONSEQUENTIAL OR PUNITIVE DAMAGES.**
4. **Assumption of Risk.** You acknowledge and agree that any use of the product for any purpose other than the specified use(s) stated in the product instructions is at Your own risk.
5. **Governing Law.** This Warranty gives You specific legal rights, and You also may have other rights which vary from state to state. This Warranty is governed by the laws of the State of Michigan, without regard to rules pertaining to conflicts of law. The state courts located in Oakland County, Michigan shall have exclusive jurisdiction for any disputes relating to this Warranty.



# Installation Instructions

PART NUMBERS: 76116, 84116, CQT76116

## Applications:

Years	Make	Models
-------	------	--------

2014-Current*	Volvo	XC60
---------------	-------	------

\*Visit our website for the most up to date information regarding application years and trim levels.

## Installation Time: 30 min

The time listed above is the average time for professional installers. If you do not feel comfortable performing this installation on your own or are in need of assistance, please contact a professional installer.



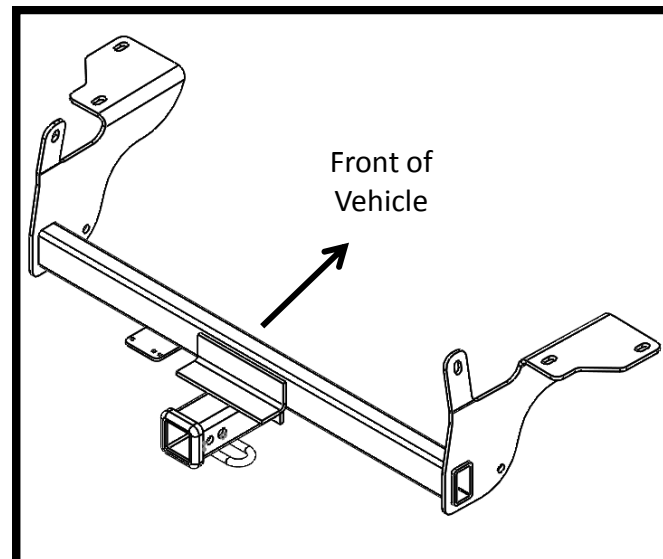
Representative Vehicle Photo

## Equipment Required:



**DO NOT EXCEED LOWER OF TOWING VEHICLE MANUFACTURER'S RATING OR:**

Hitch Type	Max Gross Trailer Weight	Max Tongue Weight
Weight Carrying	4000 lb. (1816 kg)	400 lb. (181 kg)
Weight Distributing	4500 lb. (2043 kg)	450 lb. (204 kg)



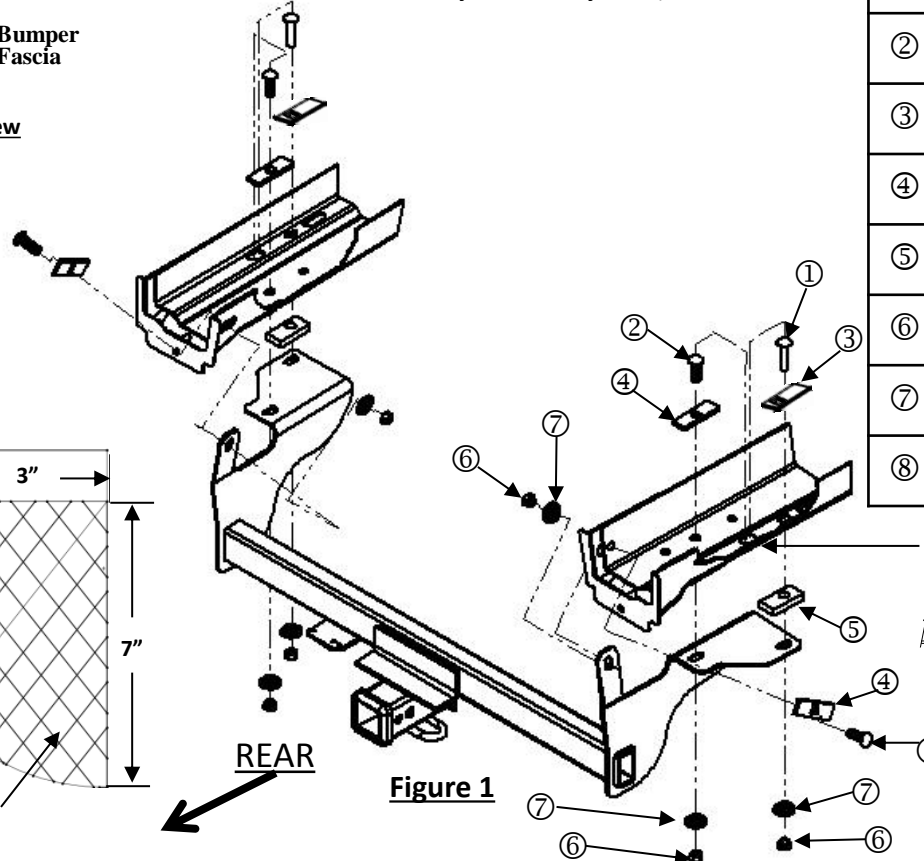
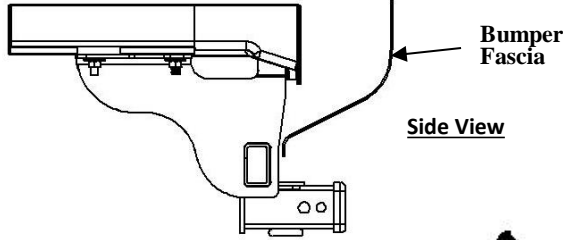
Hitch Illustration

**Always wear SAFETY GLASSES when installing hitch**

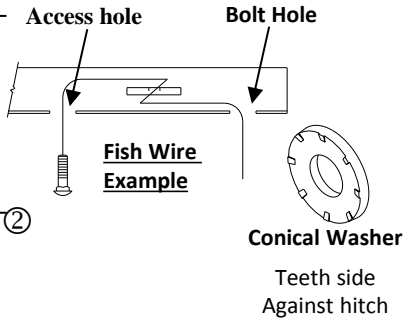
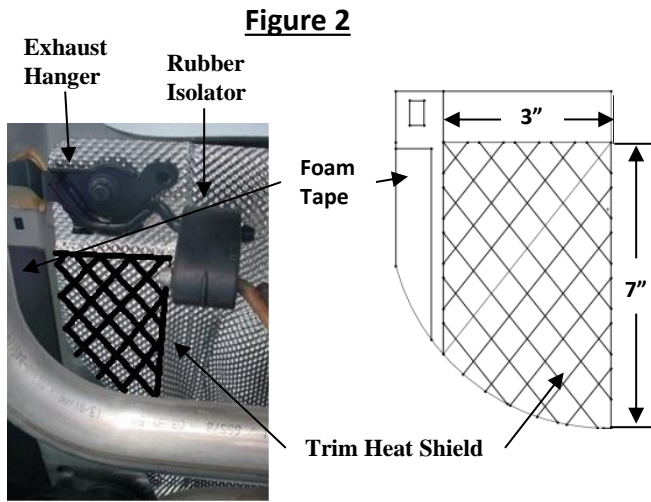
# Installation Instructions

## PART NUMBERS: 76116, 84116, CQT76116

**Fastener Kit: 76116F**



①	Qty. (2)	Carriage Bolt 7/16"-14 x 2" Gr5	
②	Qty. (4)	Carriage Bolt 7/16"-14 x 1 1/2" Gr5	
③	Qty. (2)	Block 1/8" x 7/8" x 2"	
④	Qty. (4)	Block 1/4" x 1" x 3"	
⑤	Qty. (2)	Block 1/2" x 1 1/4" x 2 1/2"	
⑥	Qty. (6)	Nut 7/16"-14 Gr2	
⑦	Qty. (6)	Conical Tooth Washer 7/16"	
⑧	Qty. (6)	Fish Wire 7/16"	



- Lower Muffler-** Lower muffler by removing the (2) rearmost (1 driver and 1 passenger) rubber isolator. **Note:** If the vehicle has bolt on exhaust tips, remove with a T-30 torxbit socket. Push the exhaust tip forward then remove to the rear. **Note:** Spray a lubricant on rubber hangers to make them slide off metal pins more easily. **Note:** Be careful that exhaust is supported before removing rubber isolators. **Note:** Removing the exhaust hanger will help with the heat shield trim, be sure to have reinstalled the exhaust hanger before raising the hitch into place.
- Trim Heat Shield-** Using tin snips cut the heat shield as shown in figure 2, both sides.
- Install Hardware -** Using the fish wire install items 1 through 4 as shown in figure 1. **Note:** The long carriage bolt goes in the forward attachment hole. **Note:** Leaving the bolt inside the frame for the rear most (inside of the frame rail) attachment will help when raising the hitch into place. **Note:** If foam tape is covering the attachment holes remove tape. **Note:** Keep the fish wire attached to the hardware.
- Install Hitch -** Gently raise hitch into position, feed the fish wire through item 5 and the attachment holes of the hitch, being careful not to push the hardware back into the frame. Loosely install items 5 through 7 to hold the hitch in place. **Note:** for additional clearance using pliers, the heat shield brackets may be bent up and toward the rear of the vehicle.
- Reinstall Muffler-** Reinstall the muffler removed in step 1. **Note:** If exhaust tips were removed they may be reinstalled.
- Tighten all 7/16-14 GR5 hardware with a torque wrench to 50 Lb.-Ft. (68 n-m).**

**Proper torque is needed to keep the hitch secure to the vehicle when towing.**

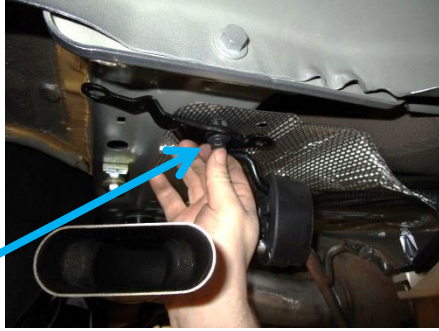
Note: check hitch frequently, making sure all fasteners and ball are properly tightened. If hitch is removed, plug all holes in trunk pan or other body panels to prevent entry of water and exhaust fumes. A hitch or ball which has been damaged should be removed and replaced. Observe safety precautions when working beneath a vehicle and wear eye protection. Do not cut access or attachment holes with a torch.

This product complies with safety specifications and requirements for connecting devices and towing systems of the state of New York, V.E.S.C. Regulation V-5 and SAE J684.

1. **Lower Muffler-** Lower muffler by removing the (2) rearmost rubber isolators. **Note:** Spray a lubricant on rubber hangers to make them slide off metal pins more easily. **NOTE:** Be careful that exhaust is supported before removing rubber isolators. **Note:** Removing the exhaust hanger will help with the heat shield trim, be sure to have reinstalled before raising the hitch into place.



Remove rubber isolator from these point

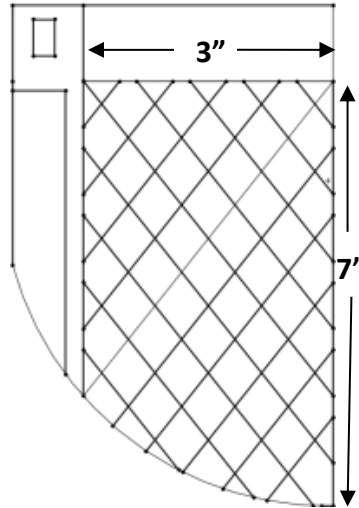


Exhaust hanger bolt can be removed with a 13mm socket

1. **Note:** If the vehicle has bolt on exhaust tips, remove with a T-30 torxbit socket. 2 bolts per side. Push the exhaust tip forward then remove to the rear.



2. **Trim Heat Shield-** Using tin snips cut the heat shield as shown in figure 2, (both sides).



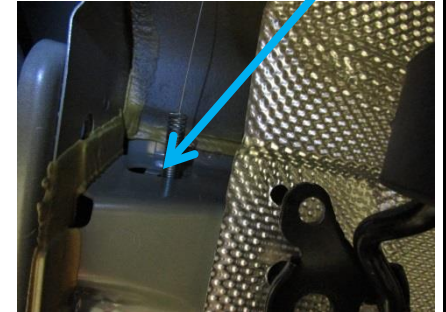
3. **Install Hardware -** Using the fish wire install items 1 through 4. As shown in figure 1 **Note:** The long carriage bolt goes in the forward attachment hole. **Note:** Leaving the bolt inside the frame for the rear most (inside of the frame rail) attachment will help when raising the hitch into place. **Note:** If foam tape is covering the attachment holes remove tape. **Note:** Keep the fish wire attached to the hardware.



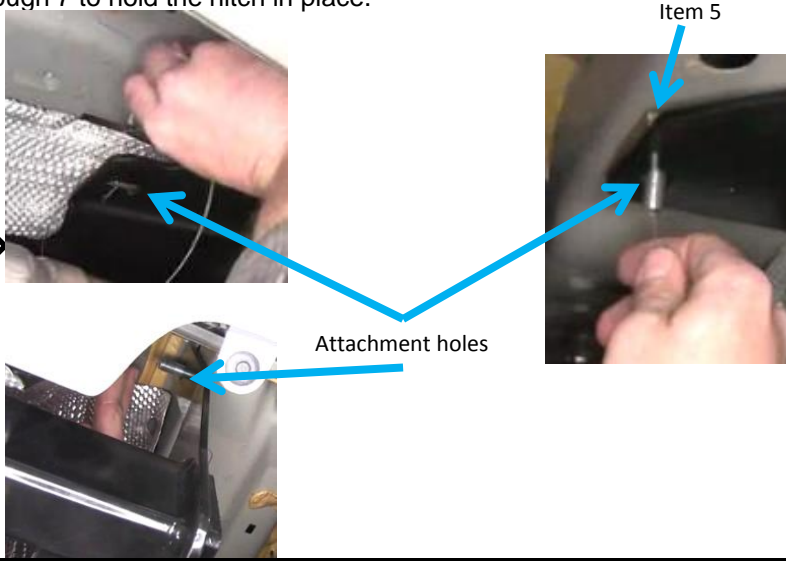
Access hole

Bolt hole side of the frame

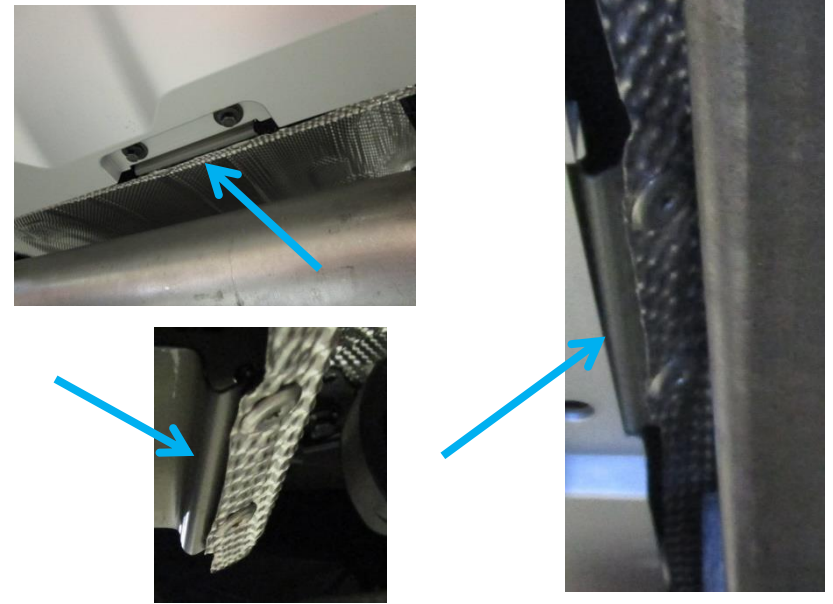
Bolt holes bottom of the frame



4. **Install Hitch** - Gently raise hitch into position, feed the fish wire through item 5 and the attachment holes of the hitch, being careful not to push the hardware back into the frame. Loosely install items 5 through 7 to hold the hitch in place.



4. **Note:** for additional clearance using pliers, the heat shield brackets may be bent up and toward the rear of the vehicle.



5. **Reinstall Muffler**- Reinstall the muffler removed in step 1. **Note:** If exhaust tips were removed they may be reinstalled.



6. **Tighten all 7/16-14 GR5 hardware with a torque wrench to 50 Lb.-Ft. (68 n-m).**



Proper torque is needed to keep the hitch secure to the vehicle when towing.

