



Installation Instructions

PART NUMBERS: 76023, 84023

CQT76023

WARNING

To prevent **SERIOUS INJURY, DEATH or PROPERTY DAMAGE:**

- **ALWAYS read, understand and follow warnings and instructions for your hitch BEFORE installation. Keep for future reference.**
- **DO NOT cut, weld or modify this receiver.**
- **CHECK all fasteners are tight and your hitch is securely mounted to your vehicle periodically.**
- **ALWAYS read, understand and follow all warnings and instructions for your vehicle and for other accessories you will use with your hitch BEFORE use.**
- **LOAD the trailer heavier in front.**
- **DO NOT exceed lower of towing vehicle manufacturer’s rating or:**

Hitch Type	Max Gross Trailer Weight	Max Tongue Weight
Weight Carrying	4500 lb. (2043 kg)	675 lb. (306 kg)
Weight Distributing	4500 lb. (2043 kg)	675 lb. (306 kg)

- **ALWAYS wear your seatbelt.**
- **SLOW DOWN when towing, NEVER exceed any posted speed limit.**
- **If EXCESS SWAY occurs, take your foot off the gas pedal and hold the steering wheel as steady as possible. DO NOT apply your brakes and DO NOT speed up.**

LIMITED LIFETIME WARRANTY

1. **Limited Lifetime Warranty (“Warranty”).** Cequent Performance Products, Inc. (“We”, “Us” or “Our”) warrants to the original consumer purchaser only (“You” or “Your”) that the product will be free from material defects in both material and workmanship, ordinary wear and tear excepted. The Warranty is valid only if (a) the products are returned to Us for inspection and testing; (b) Our inspection discloses to Our satisfaction that any alleged nonconformance are material and have not been caused by misuse, neglect, wear and tear, improper installation, unsuitable storage, improper repair, alteration, or accident; and (c) the products were installed, maintained and used in accordance with Our instructions. THE WARRANTY IS MADE IN LIEU OF ALL OTHER WARRANTIES, EXPRESS OR IMPLIED (OTHER THAN THE WARRANTY OF TITLE AS PROVIDED BY THE UNIFORM COMMERCIAL CODE IN EFFECT IN MICHIGAN), INCLUDING WITHOUT LIMITATION, ANY WARRANTIES OF MERCHANTABILITY OR FITNESS FOR A PARTICULAR PURPOSE, SAID WARRANTIES BEING EXPRESSLY DISCLAIMED.
2. **Obligations of Purchaser.** Any returned product that is replaced by Us becomes our property. You may be responsible for return shipping costs. Please retain your purchase receipt to verify date of purchase and that You are the original consumer purchaser. The product and the purchase receipt must be provided to Us in order to process Your Warranty claim.
3. **Exclusive Remedy.** Product replacement is Your sole and exclusive remedy under this Warranty. We shall not be liable for service or labor charges incurred in removing or replacing a product. IN NO EVENT WILL WE BE RESPONSIBLE FOR ANY INDIRECT, SPECIAL, CONSEQUENTIAL OR PUNITIVE DAMAGES.
4. **Assumption of Risk.** You acknowledge and agree that any use of the product for any purpose other than the specified use(s) stated in the product instructions is at Your own risk.
5. **Governing Law.** This Warranty gives You specific legal rights, and You also may have other rights which vary from state to state. This Warranty is governed by the laws of the State of Michigan, without regard to rules pertaining to conflicts of law. The state courts located in Oakland County, Michigan shall have exclusive jurisdiction for any disputes relating to this Warranty.

Cequent™ Performance Products, Inc. Installation Instructions



PART NUMBERS: 76023, 84023, CQT76023

Applications:

Years	Make	Models
2017-Current*	GMC	Acadia

*Visit our website for the most up to date information regarding application years and trim levels.

Installation Time: **90 min**

The time listed above is the average time for professional installers. If you do not feel comfortable performing this installation on your own or are in need of assistance, please contact a professional installer.



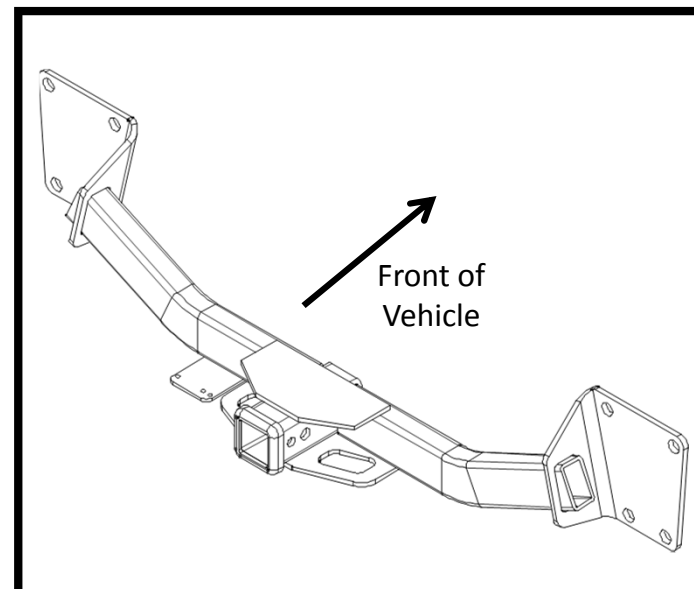
Representative Vehicle Photo

Equipment Required:

Safety Glasses	Ratchet	7 mm 15 mm Sockets	6" Socket Extension	Torque Wrench
Star Driver T15	Phillips Screwdriver	Plastic Trim Tools	Marker	Die Grinder

**DO NOT EXCEED LOWER OF TOWING VEHICLE
MANUFACTURER'S RATING OR:**

Hitch Type	Max Gross Trailer Weight	Max Tongue Weight
Weight Carrying	4500 lb. (2043 kg)	675 lb. (306 kg)
Weight Distributing	4500 lb. (2043 kg)	675 lb. (306 kg)

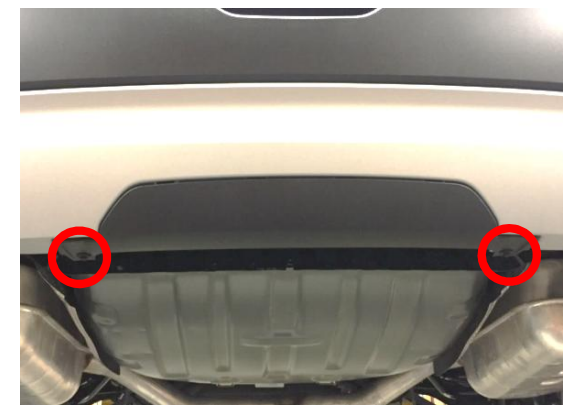
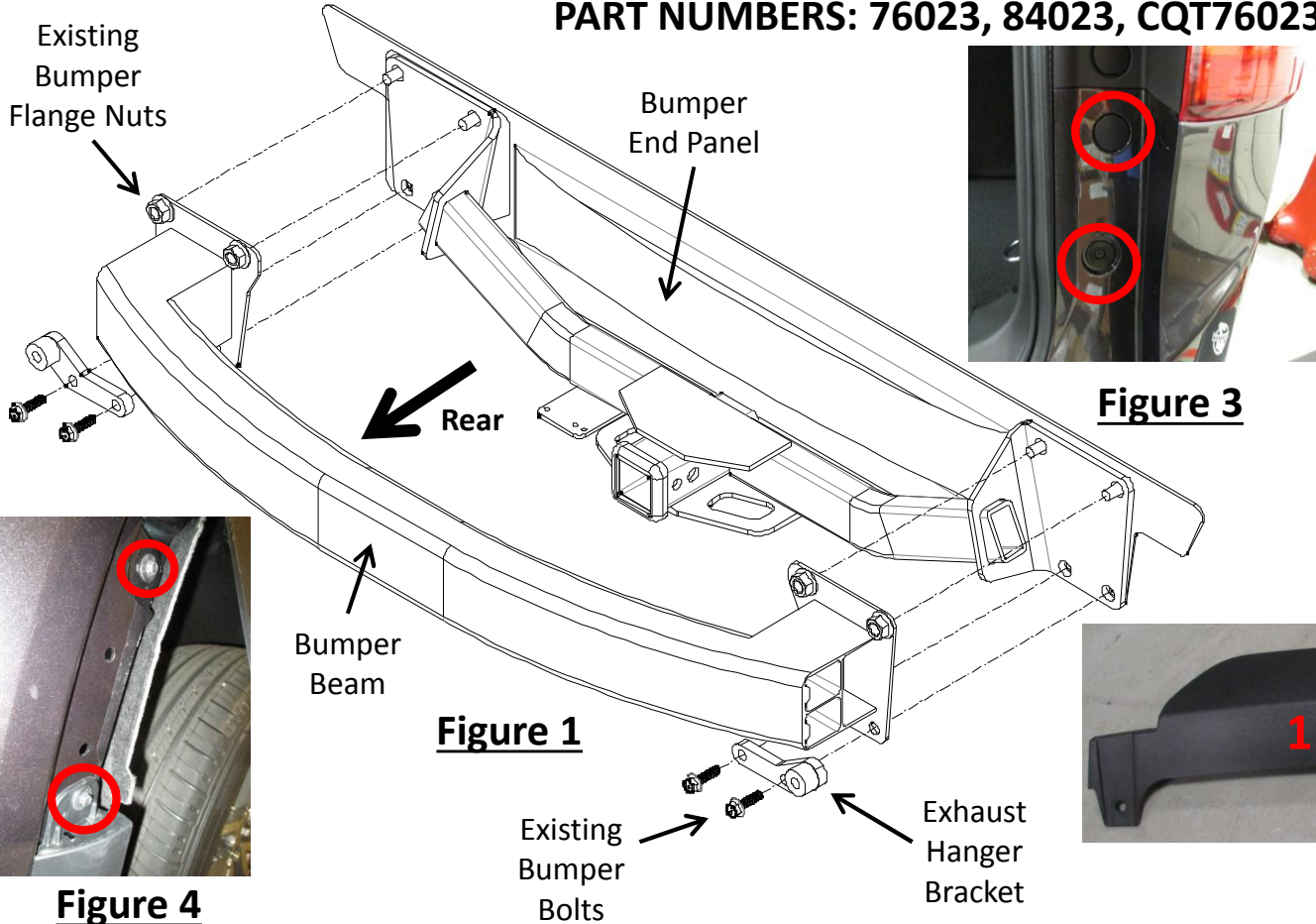


Hitch Illustration

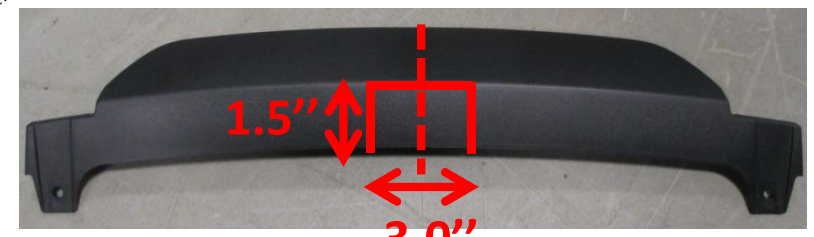
Always wear SAFETY GLASSES when installing hitch

Installation Instructions

PART NUMBERS: 76023, 84023, CQT76023



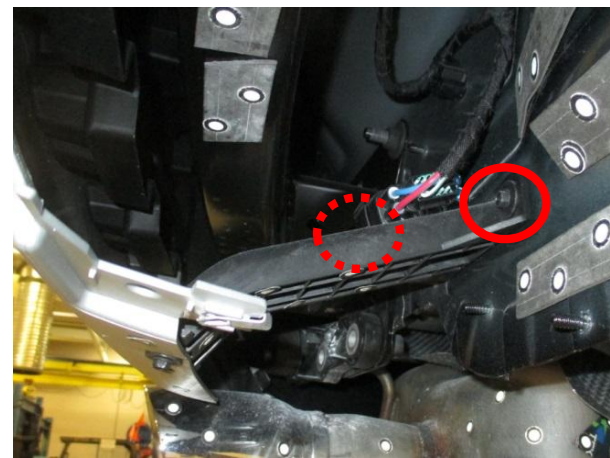
**Fasteners
Typical
Both Sides**



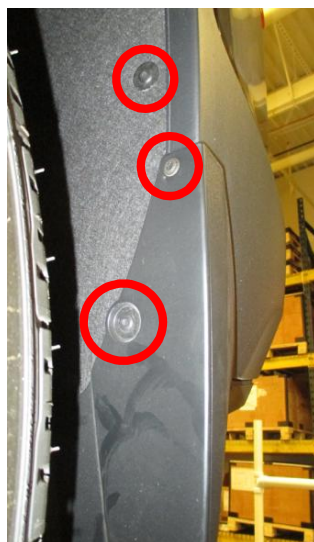
- Fascia door and bottom fascia support brackets removal** - use 7 mm socket to remove (2) bolts from bottom fascia door, see **Figure 2**. Use 7 mm socket to remove (3) bolts from bottom fascia support bracket each side and unclip the plug if present. Return bottom fascia support brackets to owner.
- Fascia removal** - open the trunk and use 7mm socket & T15 driver to remove (2) bolts as shown in **Figure 3**. Use phillips screwdriver and T15 driver to remove (3) bolts from plastic mud flap each side. Use T15 driver to remove (1) bolt from bottom fascia, and (1) bolt from wheel well liner each side. Gently pull off the upper wheel well body trim piece and remove (2) bolts behind it with 7 mm socket each side, see **Figure 4**. Gently remove the fascia and attachment straps behind wheel well liner. Unplug the wiring on driver side if present. Carefully set the fascia and straps aside for reinstallation.
- Bumper beam and exhaust hanger removal** – use 15mm socket to remove (2) flange nuts and (2) M10 bolts from bumper beam each side. Gently remove the bumper beam and exhaust hanger. Use a stand to support exhaust and prevent it from damaging.
- Hitch installation** – raise the hitch and hang it on the studs on the bumper end panel. Raise the bumper beam and exhaust hanger bracket to sandwich the hitch, see **Figure 1**. Reuse the bumper fasteners and loosely fasten them.
- Tighten all fasteners with torque wrench to 53 Lb.-Ft. (72 N*M).** **⚠ Proper torque is needed to keep the hitch secure to the vehicle when towing.**
- Reinstall all fasteners, straps, mud flaps, and fascia removed in Step 1,2.
- Fascia door can be trimmed 1.5" tall by 3.0" wide and reinstalled as shown in **Figure 5**. Get customer approval before trimming the fascia door

Note: check hitch frequently, making sure all fasteners and ball are properly tightened. If hitch is removed, plug all holes in trunk pan or other body panels to prevent entry of water and exhaust fumes. A hitch or ball which has been damaged should be removed and replaced. Observe safety precautions when working beneath a vehicle and wear eye protection. Do not cut access or attachment holes with a torch. This product complies with safety specifications and requirements for connecting devices and towing systems of the state of New York, V.E.S.C. Regulation V-5 and SAE J684.

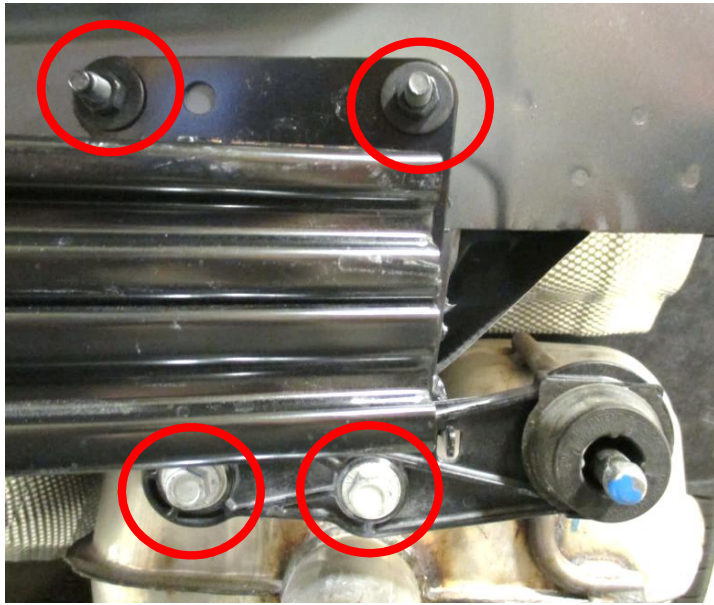
1. Fascia door and fascia bottom support brackets removal - use 7 mm socket to remove (2) bolts from bottom fascia door, see **Figure 2**. Use 7 mm socket to remove (3) bolts from bottom fascia support bracket each side and unclip the plug if present. Return bottom fascia support brackets to owner.



2. Fascia removal - open the trunk and use 7mm socket & T15 driver to remove (2) bolts as shown in **Figure 3**. Use phillips screwdriver and T15 driver to remove (3) bolts from plastic mud flap each side. Use T15 driver to remove (1) bolt from bottom fascia, and (1) bolt from wheel well liner each side. Gently pull off the upper wheel well body trim piece and remove (2) bolts behind it with 7 mm socket each side, see **Figure 4**. Gently remove the fascia and attachment straps behind wheel well liner. Unplug the wiring on driver side if present. Carefully set the fascia and straps aside for reinstallation.



3. Bumper beam and exhaust hanger removal – use 15mm socket to remove (2) flange nuts and (2) M10 bolts from bumper beam each side. Gently remove the bumper beam and exhaust hanger. Use a stand to support exhaust and prevent it from damaging.



4. Hitch installation – raise the hitch and hang it on the studs on the bumper end panel. Raise the bumper beam and exhaust hanger bracket to sandwich the hitch, see **Figure 1**. Reuse the bumper fasteners and loosely fasten them.



5. Tighten all fasteners with torque wrench to 53 lb.-ft. (72 N*M).

⚠ Proper torque is needed to keep the hitch secure to the vehicle when towing.

6. Reinstall all fasteners, straps, mud flaps, and fascia removed in Step 1,2.

7. Fascia door can be trimmed 1.5" tall by 3.0" wide and reinstalled as shown in **Figure 5**. Get customer approval before trimming the fascia door

