

Installation Instructions

PART NUMBERS: 24967, 77967, CQT24967

! WARNING

To prevent **SERIOUS INJURY, DEATH or PROPERTY DAMAGE:**

- **ALWAYS read, understand and follow warnings and instructions for your hitch BEFORE installation. Keep for future reference.**
- **DO NOT cut, weld or modify this receiver.**
- **CHECK all fasteners are tight and your hitch is securely mounted to your vehicle periodically.**
- **ALWAYS read, understand and follow all warnings and instructions for your vehicle and for other accessories you will use with your hitch BEFORE use.**
- **LOAD the trailer heavier in front.**
- **DO NOT exceed lower of towing vehicle manufacturer’s rating or:**

Hitch Type	Max Gross Trailer Weight	Max Tongue Weight
Weight Carrying	2000 lb. (908 kg)	200 lb. (90.8 kg)
Weight Distributing	X	X

- **ALWAYS wear your seatbelt.**
- **SLOW DOWN when towing, NEVER exceed any posted speed limit.**
- **If EXCESS SWAY occurs, take your foot off the gas pedal and hold the steering wheel as steady as possible. DO NOT apply your brakes and DO NOT speed up.**

LIMITED LIFETIME WARRANTY

1. **Limited Lifetime Warranty (“Warranty”).** Horizon Global (“We”, “Us” or “Our”) warrants to the original consumer purchaser only (“You” or “Your”) that the product will be free from material defects in both material and workmanship, ordinary wear and tear excepted. The Warranty is valid only if (a) the products are returned to Us for inspection and testing; (b) Our inspection discloses to Our satisfaction that any alleged nonconformance are material and have not been caused by misuse, neglect, wear and tear, improper installation, unsuitable storage, improper repair, alteration, or accident; and (c) the products were installed, maintained and used in accordance with Our instructions. **THE WARRANTY IS MADE IN LIEU OF ALL OTHER WARRANTIES, EXPRESS OR IMPLIED (OTHER THAN THE WARRANTY OF TITLE AS PROVIDED BY THE UNIFORM COMMERCIAL CODE IN EFFECT IN MICHIGAN), INCLUDING WITHOUT LIMITATION, ANY WARRANTIES OF MERCHANTABILITY OR FITNESS FOR A PARTICULAR PURPOSE, SAID WARRANTIES BEING EXPRESSLY DISCLAIMED.**
2. **Obligations of Purchaser.** Any returned product that is replaced by Us becomes our property. You may be responsible for return shipping costs. Please retain your purchase receipt to verify date of purchase and that You are the original consumer purchaser. The product and the purchase receipt must be provided to Us in order to process Your Warranty claim.
3. **Exclusive Remedy.** Product replacement is Your sole and exclusive remedy under this Warranty. We shall not be liable for service or labor charges incurred in removing or replacing a product. **IN NO EVENT WILL WE BE RESPONSIBLE FOR ANY INDIRECT, SPECIAL, CONSEQUENTIAL OR PUNITIVE DAMAGES.**
4. **Assumption of Risk.** You acknowledge and agree that any use of the product for any purpose other than the specified use(s) stated in the product instructions is at Your own risk.
5. **Governing Law.** This Warranty gives You specific legal rights, and You also may have other rights which vary from state to state. This Warranty is governed by the laws of the State of Michigan, without regard to rules pertaining to conflicts of law. The state courts located in Oakland County, Michigan shall have exclusive jurisdiction for any disputes relating to this Warranty.

Installation Instructions

PART NUMBERS: 24967, 77967, CQT24967

Applications:

Years	Make	Models
2010 – 2015	Toyota	Prius
2012 – 2015	Toyota	Prius Plug-In

*Visit our website for the most up to date information regarding application years and trim levels.

Installation Time: **40 min**

The time listed above is the average time for professional installers. If you do not feel comfortable performing this installation on your own or are in need of assistance, please contact a professional installer.



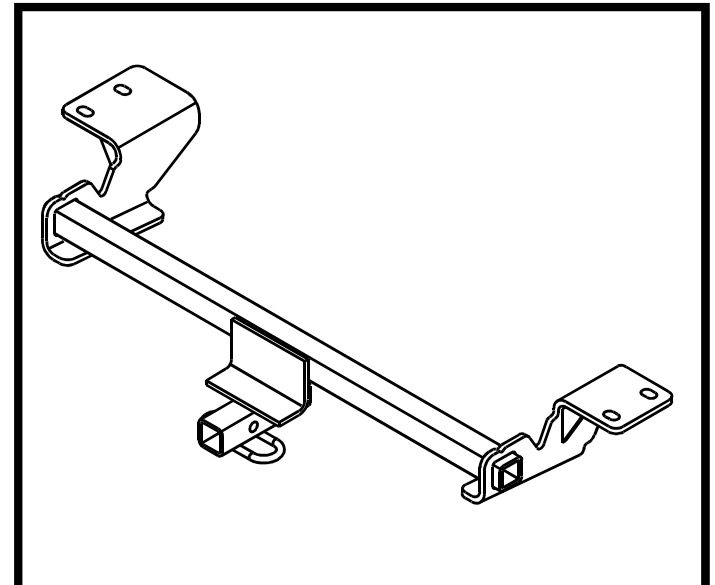
Representative Vehicle Photo

Equipment Required:

Safety Glasses	Ratchet	10 mm 19 mm Sockets	6" Socket Extension	Torque Wrench	Soapy Water	Flat Head Screw Driver
Exhaust Removal Pliers	Ratchet Strap	OR Bungee Cord	Tape Measure	Marker	OR Utility Knife	Tin Snips

DO NOT EXCEED LOWER OF TOWING VEHICLE MANUFACTURER'S RATING OR:

Hitch Type	Max Gross Trailer Weight	Max Tongue Weight
Weight Carrying	2000 lb. (908 kg)	200 lb. (90.8 kg)
Weight Distributing	X	X



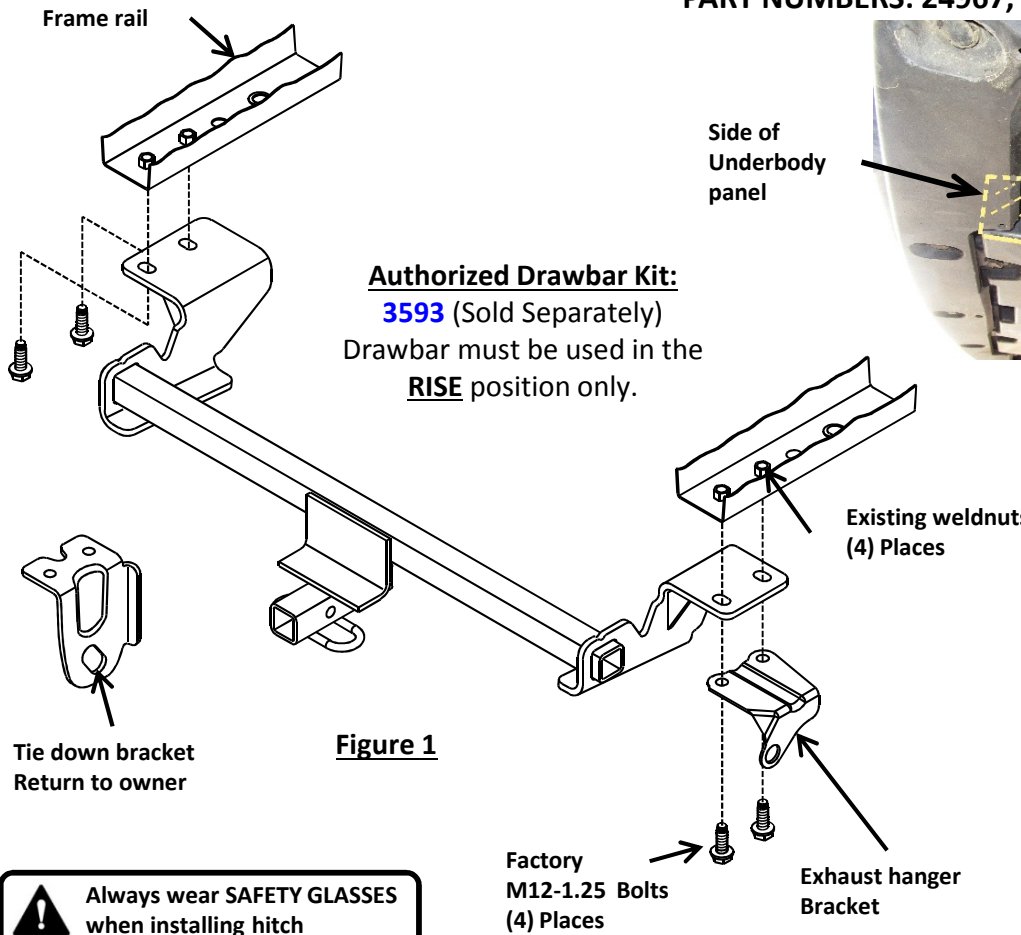
Hitch Illustration

Installation Instructions

PART NUMBERS: 24967, 77967, CQT24967

Fastener Kit: 24967F

①	Qty. (2)	Cable Tie 
---	----------	---



Authorized Drawbar Kit:
3593 (Sold Separately)
 Drawbar must be used in the **RISE** position only.

Figure 1

Side of Underbody panel

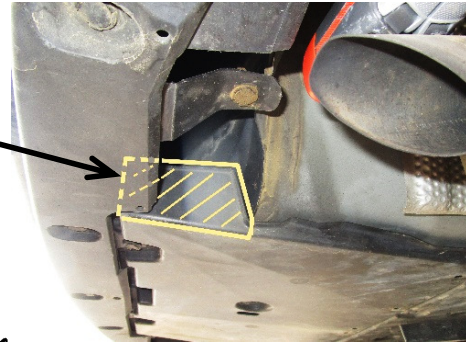


Figure 2

Cable Tie Fascia Tabs

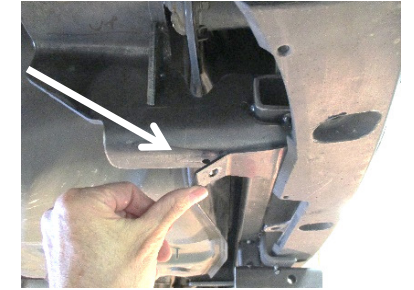


Figure 4

Area to Trim

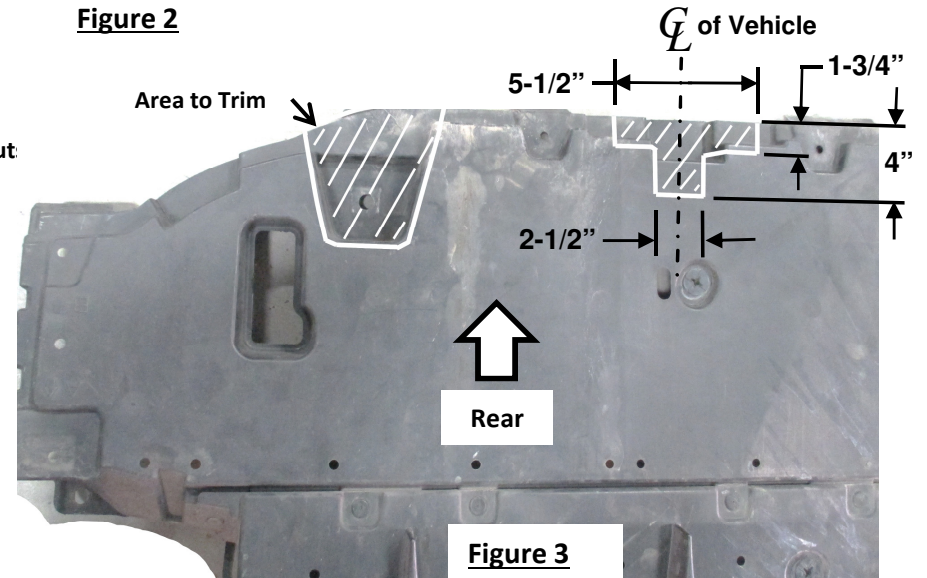


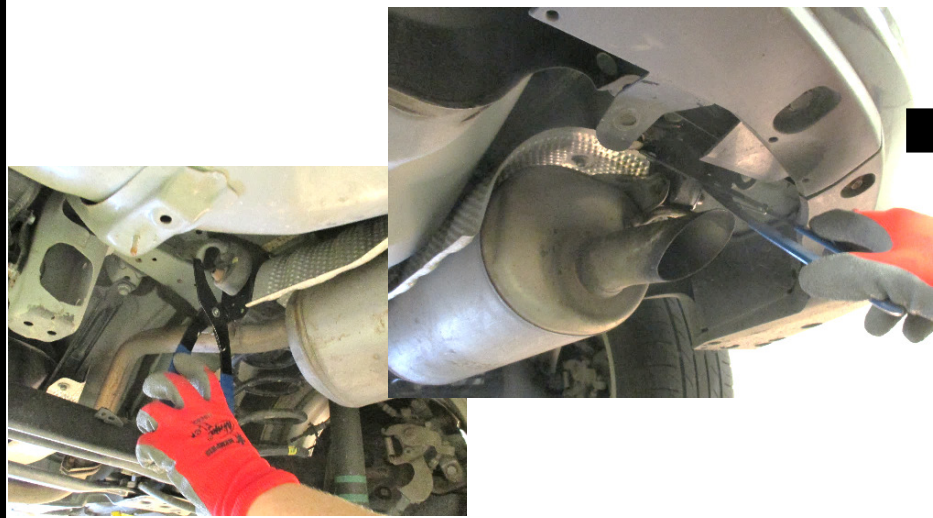
Figure 3

Always wear SAFETY GLASSES when installing hitch

- Lower muffler** – Using an exhaust hanger removal tool, lower muffler by removing (1) rearmost rubber hanger, and (1) forward rubber hanger. A spray a lubricant or soapy water on rubber hangers makes them slide off metal pins more easily. **NOTE: Be sure exhaust is supported before removing rubber hangers.**
- Remove exhaust hanger bracket** – Using a 19mm socket, remove (2) bolts from exhaust hanger bracket on passenger's side. Save exhaust bracket and bolts to be reused for hitch installation.
- Remove underbody panel** – using a flat head screw driver and a 10mm socket, remove (6) plastic push-pin rivets, (1) hex nut, and unscrew (4) threaded panel fasteners from bottom of panel.
- Remove tie down bracket** - Using a 19mm socket, remove (2) bolts from tie down bracket on driver's side. Bolts to be used for hitch installation. Return tie down bracket to vehicle owner.
- Trim underbody panel** – using a tape measure, marker and utility knife, measure, mark, and trim the underbody panel as shown in **Figures 2 and 3**.
- Install hitch** – raise hitch into position, raising the driver's side of hitch into position first, position bracket above carbon canister hoses, then raise the passenger's side into position. **See Figure 1.**
- Reinstall fasteners** - Loosely reinstall the (4) factory M12 bolts (and exhaust hanger bracket on passenger's side) into existing weldnuts in frame. **NOTE: The hitch is sandwiched between the exhaust hanger bracket and frame. See Figure 1.**
- Tighten all M12 factory bolts with torque wrench to 76 Lb.-Ft. (103 N*M)** **▲ Proper torque is needed to keep the hitch secure to the vehicle when towing.**
- Raise muffler** back into position and reattach all rubber hangers removed in step 1.
- Reinstall the underbody panel** using (4 of 6) push-pin rivets, (4) threaded fasteners, and (1) hex nut.
- Secure Fascia tabs** -Using (2) cable ties provided, secure (2) rear fascia tabs to bottom of hitch bracket. Trim excess ends of cable ties. **See Figure 4.**

Note: check hitch frequently, making sure all fasteners and ball are properly tightened. If hitch is removed, plug all holes in trunk pan or other body panels to prevent entry of water and exhaust fumes. A hitch or ball which has been damaged should be removed and replaced. Observe safety precautions when working beneath a vehicle and wear eye protection. Do not cut access or attachment holes with a torch. This product complies with safety specifications and requirements for connecting devices and towing systems of the state of New York, V.E.S.C. Regulation V-5 and SAE J684.

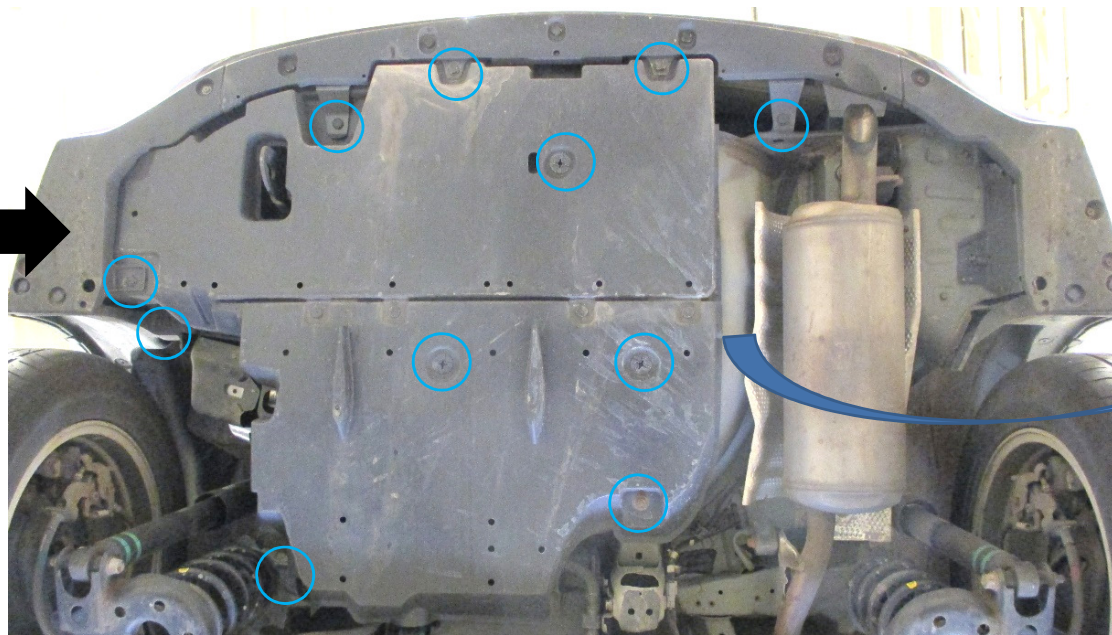
1. Lower muffler – Using an exhaust hanger removal tool, lower muffler by removing (1) rearmost rubber hanger, and (1) forward rubber hanger. A spray a lubricant or soapy water on rubber hangers makes them slide off metal pins more easily. **NOTE: Be sure exhaust is supported before removing rubber hangers.**



2. Remove exhaust hanger bracket – Using a 19mm socket, remove (2) bolts from exhaust hanger bracket on passenger's side. Save exhaust bracket and bolts to be reused for hitch installation.



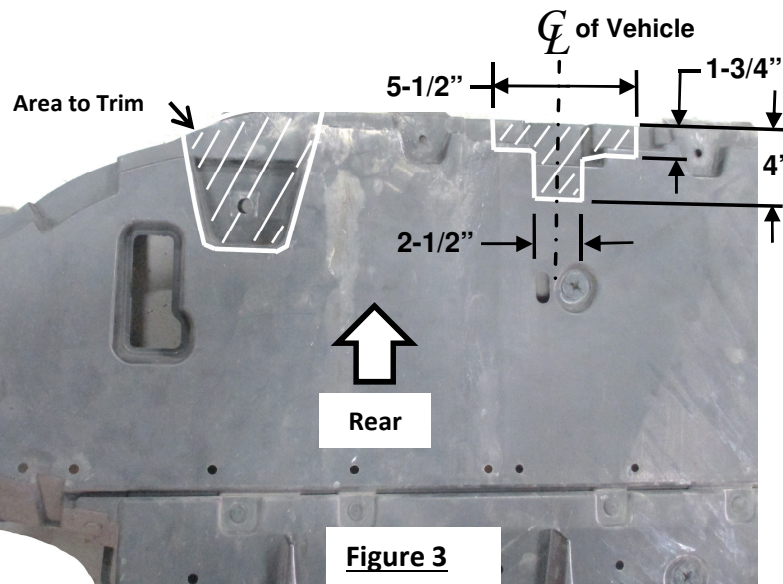
3. Remove underbody panel – using a flat head screw driver and a 10mm socket, remove (6) plastic push-pin rivets, (1) hex nut, and unscrew (4) threaded panel fasteners from bottom of panel.



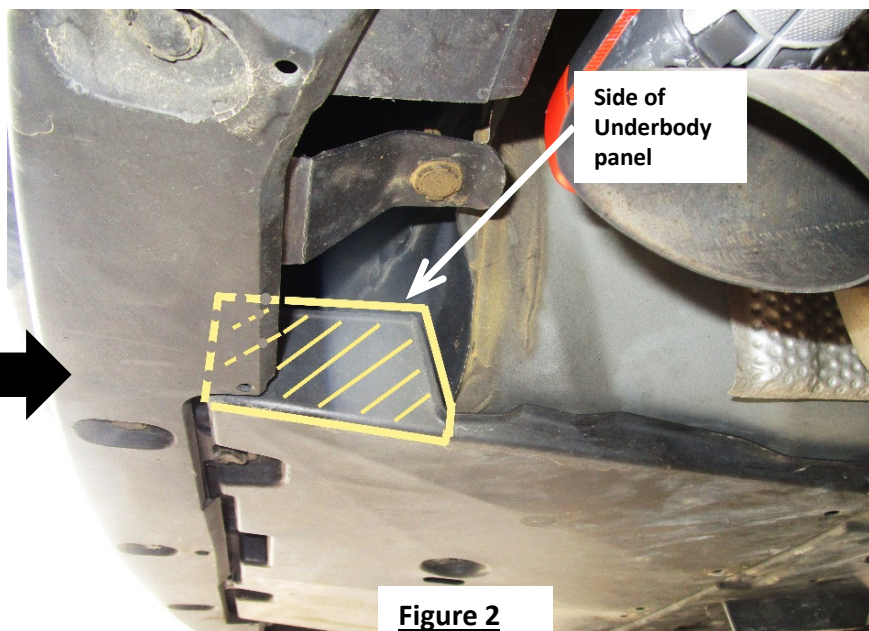
4. Remove tie down bracket - Using a 19mm socket, remove (2) bolts from tie down bracket on driver's side. Bolts to be used for hitch installation. Return tie down bracket to vehicle owner.



5a. Trim underbody panel – using a tape measure, marker and utility knife, measure, mark, and trim the underbody panel as shown in Figures 2 and 3.



5b. Trim underbody panel – using a tape measure, marker and utility knife, measure, mark, and trim the underbody panel as shown in Figure 2 and 3.



6. Install hitch – raise hitch into position, raising the driver's side of hitch into position first, position bracket above carbon canister hoses, then raise the passenger's side into position. See Figure 1.



7. Reinstall fasteners - Loosely reinstall the (4) factory M12 bolts (and exhaust hanger bracket on passenger's side) into existing weldnuts in frame. **NOTE:** The hitch is sandwiched between the exhaust hanger bracket and frame. **See Figure 1.**



8. Tighten all M12 factory bolts with torque wrench to 76 Lb.-Ft. (103 N*M)

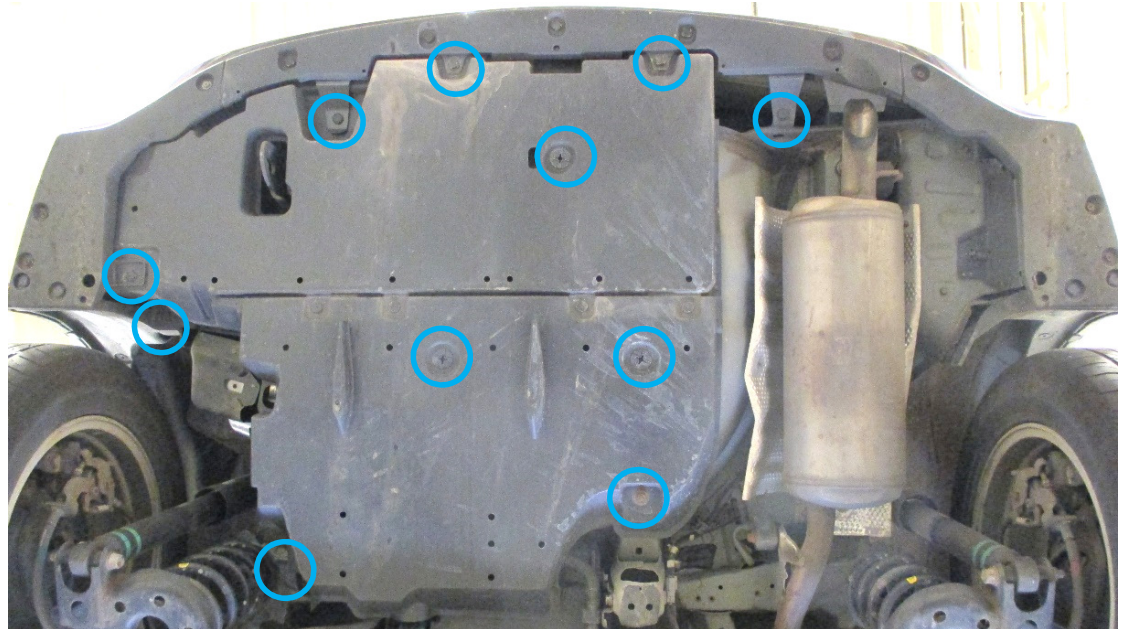
! Proper torque is needed to keep the hitch secure to the vehicle when towing.



9. Raise muffler back into position and reattach all rubber hangers removed in step 1.



10. Reinstall the underbody panel using (4 of 6) push-pin rivets, (4) threaded fasteners, and (1) hex nut.



11. Using the (2) cable ties provided, secure (2) rear fascia tabs to bottom of hitch bracket. Trim excess ends of cable ties. See Figure 4.

