



Installation Instructions

PART NUMBERS: 24954, 77336, CQT24954

⚠ WARNING

To prevent **SERIOUS INJURY, DEATH or PROPERTY DAMAGE:**

- **ALWAYS read, understand and follow warnings and instructions for your hitch BEFORE installation. Keep for future reference.**
 - **DO NOT cut, weld or modify this receiver.**
 - **CHECK all fasteners are tight and your hitch is securely mounted to your vehicle periodically.**
 - **ALWAYS read, understand and follow all warnings and instructions for your vehicle and for other accessories you will use with your hitch BEFORE use.**
 - **LOAD the trailer heavier in front.**
 - **DO NOT exceed lower of towing vehicle manufacturer’s rating or:**
- | Hitch Type | Max Gross Trailer Weight | Max Tongue Weight |
|---------------------|--------------------------|-------------------|
| Weight Carrying | 2000 lb. (908 kg) | 200 lb. (90 kg) |
| Weight Distributing | X | X |
- **ALWAYS wear your seatbelt.**
 - **SLOW DOWN when towing, NEVER exceed any posted speed limit.**
 - **If EXCESS SWAY occurs, take your foot off the gas pedal and hold the steering wheel as steady as possible. DO NOT apply your brakes and DO NOT speed up.**

LIMITED LIFETIME WARRANTY

1. **Limited Lifetime Warranty (“Warranty”).** Cequent Performance Products, Inc. (“We”, “Us” or “Our”) warrants to the original consumer purchaser only (“You” or “Your”) that the product will be free from material defects in both material and workmanship, ordinary wear and tear excepted. The Warranty is valid only if (a) the products are returned to Us for inspection and testing; (b) Our inspection discloses to Our satisfaction that any alleged nonconformance are material and have not been caused by misuse, neglect, wear and tear, improper installation, unsuitable storage, improper repair, alteration, or accident; and (c) the products were installed, maintained and used in accordance with Our instructions. **THE WARRANTY IS MADE IN LIEU OF ALL OTHER WARRANTIES, EXPRESS OR IMPLIED (OTHER THAN THE WARRANTY OF TITLE AS PROVIDED BY THE UNIFORM COMMERCIAL CODE IN EFFECT IN MICHIGAN), INCLUDING WITHOUT LIMITATION, ANY WARRANTIES OF MERCHANTABILITY OR FITNESS FOR A PARTICULAR PURPOSE, SAID WARRANTIES BEING EXPRESSLY DISCLAIMED.**
2. **Obligations of Purchaser.** Any returned product that is replaced by Us becomes our property. You may be responsible for return shipping costs. Please retain your purchase receipt to verify date of purchase and that You are the original consumer purchaser. The product and the purchase receipt must be provided to Us in order to process Your Warranty claim.
3. **Exclusive Remedy.** Product replacement is Your sole and exclusive remedy under this Warranty. We shall not be liable for service or labor charges incurred in removing or replacing a product. **IN NO EVENT WILL WE BE RESPONSIBLE FOR ANY INDIRECT, SPECIAL, CONSEQUENTIAL OR PUNITIVE DAMAGES.**
4. **Assumption of Risk.** You acknowledge and agree that any use of the product for any purpose other than the specified use(s) stated in the product instructions is at Your own risk.
5. **Governing Law.** This Warranty gives You specific legal rights, and You also may have other rights which vary from state to state. This Warranty is governed by the laws of the State of Michigan, without regard to rules pertaining to conflicts of law. The state courts located in Oakland County, Michigan shall have exclusive jurisdiction for any disputes relating to this Warranty.



Installation Instructions

PART NUMBERS: 24954, 77336, CQT24954

Applications:

Years	Make	Models
2016-Current*	Honda	Civic Sedan
2016-Current*	Honda	Civic Coupe
2017-Current*	Honda	Civic Hatchback

*Visit our website for the most up to date information regarding application years and trim levels.

Installation Time: **65 min.**

The time listed above is the average time for professional installers. If you do not feel comfortable performing this installation on your own or are in need of assistance, please contact a professional installer.

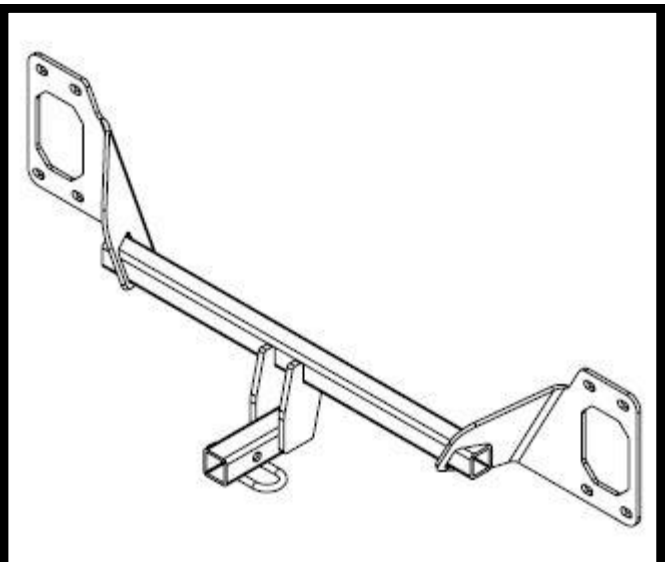


Representative Vehicle Photo

Equipment Required:

DO NOT EXCEED LOWER OF TOWING VEHICLE MANUFACTURER'S RATING OR:

Hitch Type	Max Gross Trailer Weight	Max Tongue Weight
Weight Carrying	2000 lb. (908 kg)	200 lb. (90 kg)
Weight Distributing	X	X



Hitch Illustration





Always wear SAFETY GLASSES
when installing hitch

Installation Instructions

PART NUMBERS: 24954, 77336, CQT24954

FASTENER KIT: 2 4 9 5 4 F

①	Qty. (8)	Hex bolt M8 X 1.25 X 30 CL8.8	
②	Qty. (8)	Conical washer 3/8"	

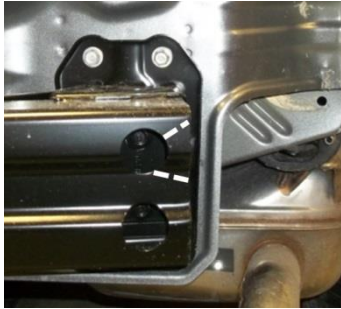


Figure 2

Trim bumper as
needed for fascia
clearance. Both sides

(Sold separately)

Drawbar Kit: 3593

Drawbar must be used in
the **RISE** position only.

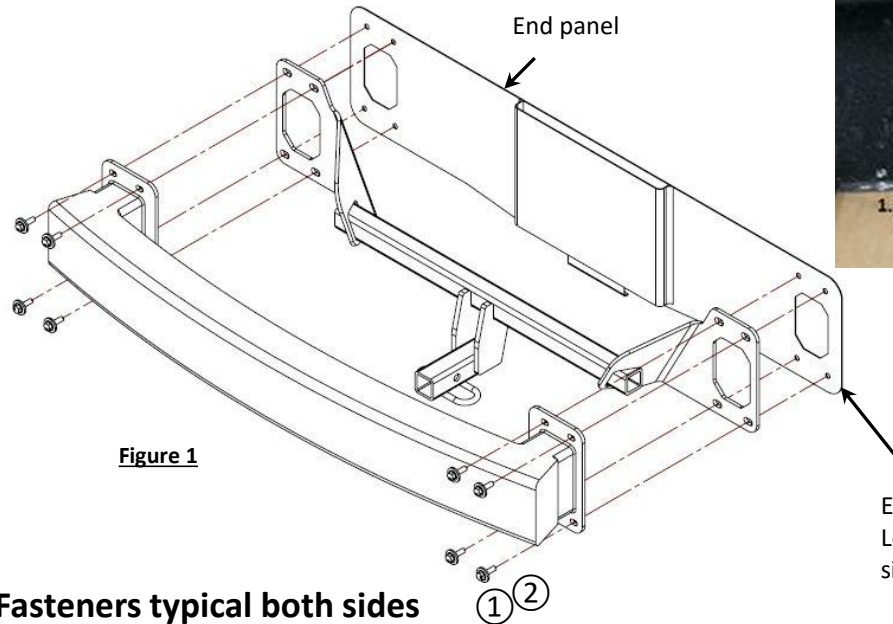


Figure 1

Note: Fasteners typical both sides

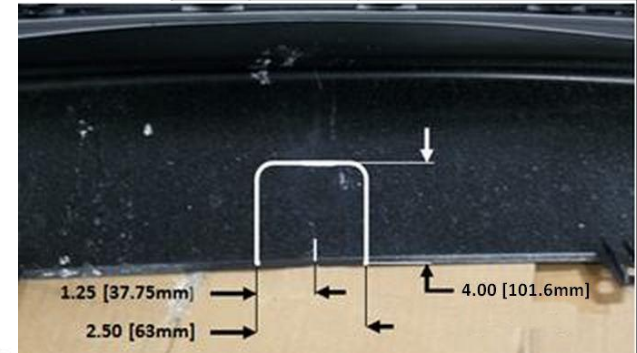



Figure 3

Fascia trimming
2.50 X 4.00 cutout in fascia required.
Use drill to create radius.

Existing weld nuts
Located on opposite
side of end panel



**Conical washer
teeth side
against hitch**

1. Mark centerline of fascia with marker or tape.
2. **Remove plastic rivets and screws:** Remove plastic rivets from supports on bottom of bumper fascia. Rivets are released by first pulling out center post of rivet approx 1/4". Rivet can then be pushed out by hand. Remove the Philip screws from wheel well opening. (approx. 3 each side).
3. **Open trunk/hatch:** Open trunk to remove the hex screws from under the rear hatch securing the bumper fascia. Repeat for each side.
4. **Bumper fascia removal;** Loosen the tail lights bolts for additional clearance, during fascia removal. Gently pull up from the rear wheel well trim panel each side, unclipping the tabs inside. Work up to taillights and continue to gently remove along the bottom of the tail lights. Using a small screwdriver lift cleats between the fascia and tail lights if needed. Continue to remove along inside bottom to the trunk, if needed, use a small flat screw driver to release the cleats at the top of the fascia while carefully pulling the fascia away from the vehicle. If present disconnect any wiring harness at the fascia, and put the fascia cover aside.
5. **Bumper removal:** Remove the (8) bolts holding the bumper in place and return the fasteners to the owner.
6. **Bumper trimming:** using a die grinder remove the material shown in Figure 2. Both sides as needed.
7. **Hitch installation:** Raise the hitch and bumper into position as shown, and attach using the fasteners provided.
8. **Tighten all M8 CL8.8 fasteners with torque wrench to 20 Lb.-Ft. (27 N*M).**
 **Proper torque is needed to keep the hitch secure to the vehicle when towing.**
9. **Trim fascia:** using the center of the fascia marked in step 1. 2.50 x 4.125 off center mark. Use drill to create radius. See Figure 3.
10. **Reinstall fascia:** starting from the center of the vehicle lineup and gently reinstall the rear fascia and all fasteners in reverse order steps 2-4. (Note: reattach any wiring harness if removed)

Note: check hitch frequently, making sure all fasteners and ball are properly tightened. If hitch is removed, plug all holes in trunk pan or other body panels to prevent entry of water and exhaust fumes. A hitch or ball which has been damaged should be removed and replaced. Observe safety precautions when working beneath a vehicle and wear eye protection. Do not cut access or attachment holes with a torch.

This product complies with safety specifications and requirements for connecting devices and towing systems of the state of New York, V.E.S.C. Regulation V-5 and SAE J684.

1. Mark centerline of fascia with marker or tape.



2. **Remove plastic rivets and screws:** Remove plastic rivets from supports on bottom of bumper fascia. Rivets are released by first pulling out center post of rivet approx 1/4". Rivet can then be pushed out by hand. Remove the Philip screw (approx. 3 each side).



3. **Open trunk:** Open trunk to remove the hex screw (2) from under the rear hatch securing the bumper fascia. Repeat for each side.



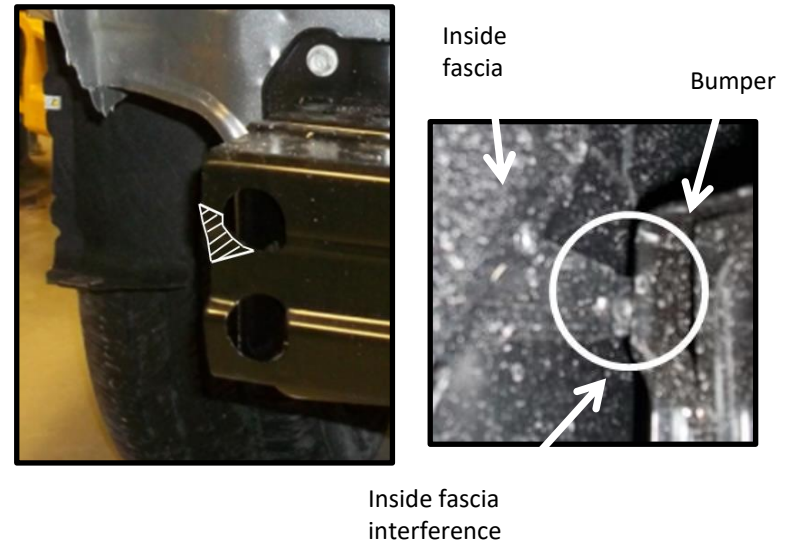
4. **Bumper fascia removal;** Loosen the tail lights bolts for additional clearance for fascia removal. Gently pull up from the rear wheel well trim panel each side, unclipping the tabs inside. Work up to taillights and continue to gently remove along the bottom of the tail lights. Using a small screwdriver lift cleats between the fascia and tail lights if needed. Continue to remove along inside bottom to the trunk, if needed, use a small flat screw driver to release the cleats at the top of the fascia while carefully pulling the fascia away from the vehicle. If present disconnect any wiring harness at the fascia, and put the fascia cover aside.



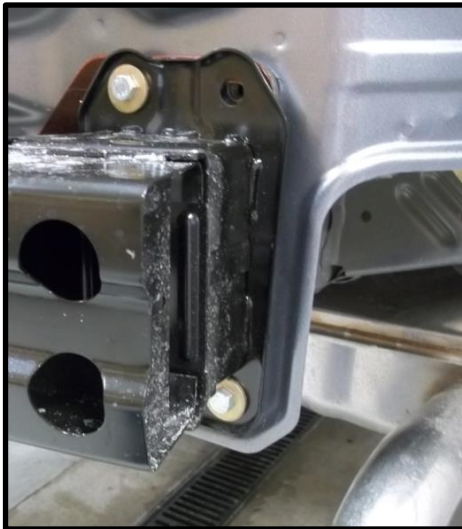
5. Bumper removal: Remove the (8) bolts holding the bumper in place and return the fasteners to the owner.



6. Bumper trimming: using a die grinder remove the material shown in Figure 2. Both sides

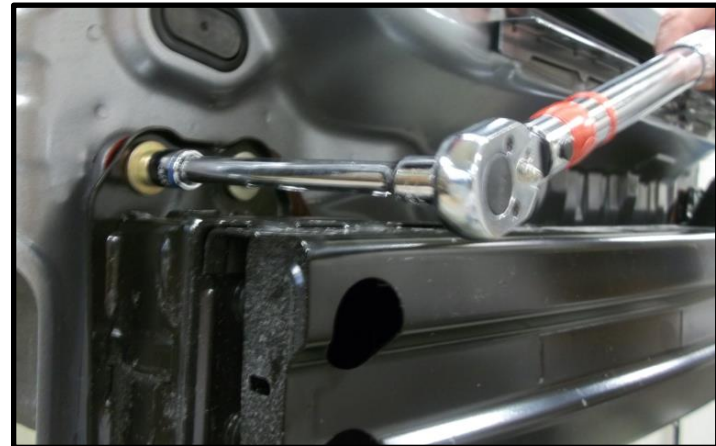


7. Hitch installation: Raise the hitch and bumper into position as shown, and attach using the fasteners provided.



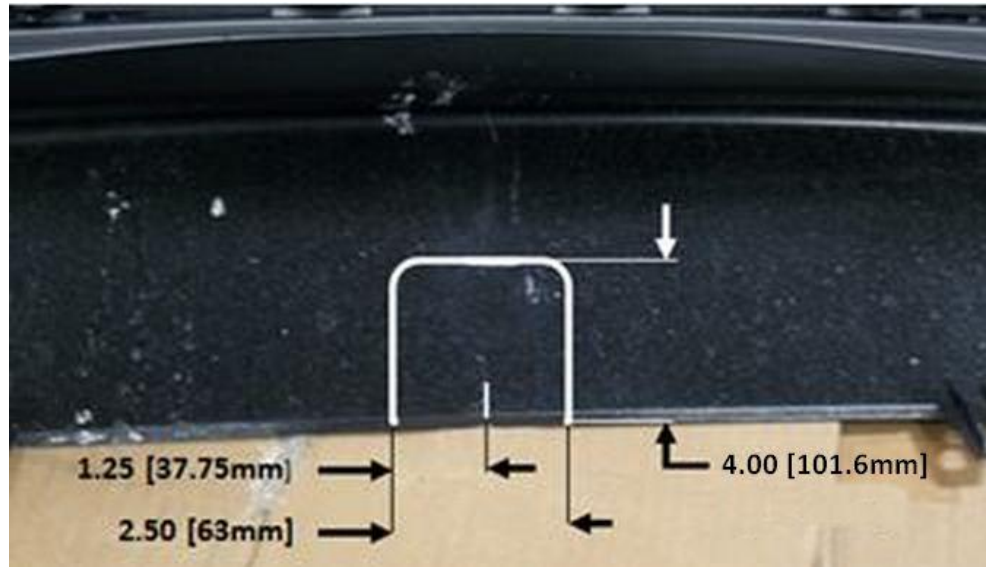
8. Tighten all M8 CL8.8 fasteners with torque wrench to 20 Lb.-Ft. (27 N*M).

⚠ Proper torque is needed to keep the hitch secure to the vehicle when towing.



9. Trim fascia: using the center of the fascia marked in step 1. 2.50 x 4.00 off center mark. Use drill to create radius. See Figure below.

Fascia trimming
2.50 X 4.00 cutout in fascia
required. Use drill to
create radius.



10. Reinstall fascia: starting from the center of the vehicle lineup and gently reinstall the rear fascia and all fasteners in reverse order steps 2-4. (Note: reattach any wiring harness if removed)

