



# Installation Instructions

PART NUMBERS: 24942, 77329,  
CQT24942

## ! WARNING

To prevent **SERIOUS INJURY, DEATH** or **PROPERTY DAMAGE**:

- **ALWAYS** read, understand and follow warnings and instructions for your hitch **BEFORE** installation. Keep for future reference.
- **DO NOT** cut, weld or modify this receiver.
- **CHECK** all fasteners are tight and your hitch is securely mounted to your vehicle periodically.
- **ALWAYS** read, understand and follow all warnings and instructions for your vehicle and for other accessories you will use with your hitch **BEFORE** use.
- **LOAD** the trailer heavier in front.
- **DO NOT** exceed lower of towing vehicle manufacturer's rating or:

Hitch Type	Max Gross Trailer Weight	Max Tongue Weight
Weight Carrying	2000 lb. (908 kg)	200 lb. (90 kg)
Weight Distributing	X	X

- **ALWAYS** wear your seatbelt.
- **SLOW DOWN** when towing, **NEVER** exceed any posted speed limit.
- If **EXCESS SWAY** occurs, take your foot off the gas pedal and hold the steering wheel as steady as possible. **DO NOT** apply your brakes and **DO NOT** speed up.

## LIMITED LIFETIME WARRANTY

1. **Limited Lifetime Warranty (“Warranty”).** Cequent Performance Products, Inc. (“We”, “Us” or “Our”) warrants to the original consumer purchaser only (“You” or “Your”) that the product will be free from material defects in both material and workmanship, ordinary wear and tear excepted. The Warranty is valid only if (a) the products are returned to Us for inspection and testing; (b) Our inspection discloses to Our satisfaction that any alleged nonconformance are material and have not been caused by misuse, neglect, wear and tear, improper installation, unsuitable storage, improper repair, alteration, or accident; and (c) the products were installed, maintained and used in accordance with Our instructions. **THE WARRANTY IS MADE IN LIEU OF ALL OTHER WARRANTIES, EXPRESS OR IMPLIED (OTHER THAN THE WARRANTY OF TITLE AS PROVIDED BY THE UNIFORM COMMERCIAL CODE IN EFFECT IN MICHIGAN), INCLUDING WITHOUT LIMITATION, ANY WARRANTIES OF MERCHANTABILITY OR FITNESS FOR A PARTICULAR PURPOSE, SAID WARRANTIES BEING EXPRESSLY DISCLAIMED.**
2. **Obligations of Purchaser.** Any returned product that is replaced by Us becomes our property. You may be responsible for return shipping costs. Please retain your purchase receipt to verify date of purchase and that You are the original consumer purchaser. The product and the purchase receipt must be provided to Us in order to process Your Warranty claim.
3. **Exclusive Remedy.** Product replacement is Your sole and exclusive remedy under this Warranty. We shall not be liable for service or labor charges incurred in removing or replacing a product. **IN NO EVENT WILL WE BE RESPONSIBLE FOR ANY INDIRECT, SPECIAL, CONSEQUENTIAL OR PUNITIVE DAMAGES.**
4. **Assumption of Risk.** You acknowledge and agree that any use of the product for any purpose other than the specified use(s) stated in the product instructions is at Your own risk.
5. **Governing Law.** This Warranty gives You specific legal rights, and You also may have other rights which vary from state to state. This Warranty is governed by the laws of the State of Michigan, without regard to rules pertaining to conflicts of law. The state courts located in Oakland County, Michigan shall have exclusive jurisdiction for any disputes relating to this Warranty.

Rev 9/2014



# Installation Instructions

PART NUMBERS: 24942, 77329, CQT24942

## Applications:

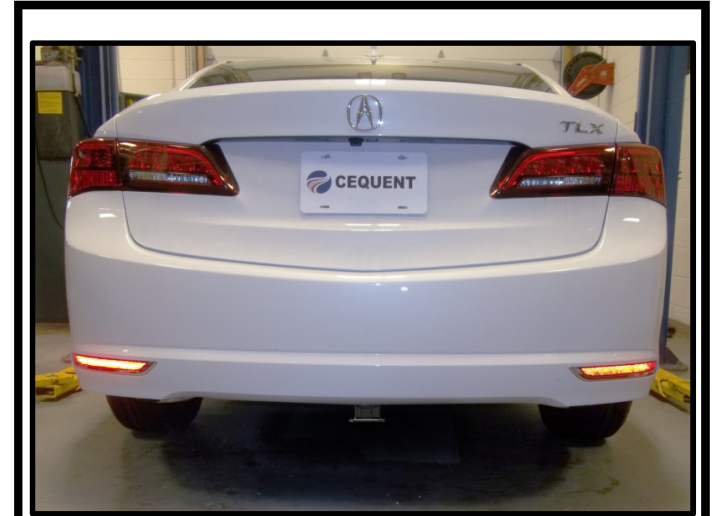
Years	Make	Models
-------	------	--------

2015-Current*	Acura	TLX
---------------	-------	-----

\*Visit our website for the most up to date information regarding application years and trim levels.

## Installation Time: 60 Min.

The time listed above is the average time for professional installers. If you do not feel comfortable performing this installation on your own or are in need of assistance, please contact a professional installer.



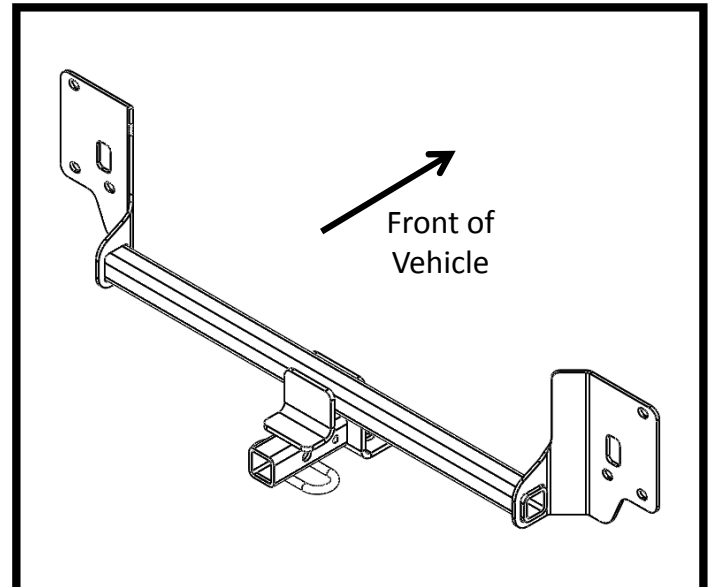
Representative Vehicle Photo

## Equipment Required:



## DO NOT EXCEED LOWER OF TOWING VEHICLE MANUFACTURER'S RATING OR:

Hitch Type	Max Gross Trailer Weight	Max Tongue Weight
Weight Carrying	2000 lb. (908 kg)	200 lb. (90 kg)
Weight Distributing	X	X



Hitch Illustration

**Always wear SAFETY GLASSES when installing hitch**

# Installation Instructions

## PART NUMBERS: 24942, 77329, CQT24942




(Sold Separately)

### Drawbar Kit:

3593

Drawbar must be used in the **RISE** position only.

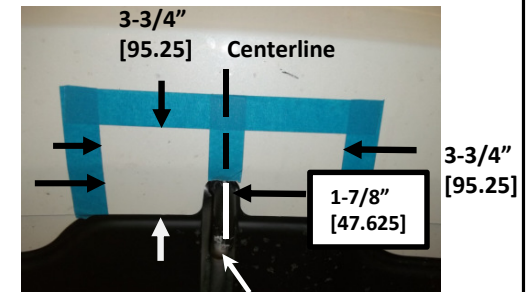
### Fastener Kit : 24942F

①	Qty. (1)	U-BOLT 3/8-16 GR5	
②	Qty. (2)	Conical washer 3/8"	
③	Qty. (2)	Hex nut 3/8-16	

Small Flat Head Screw Driver

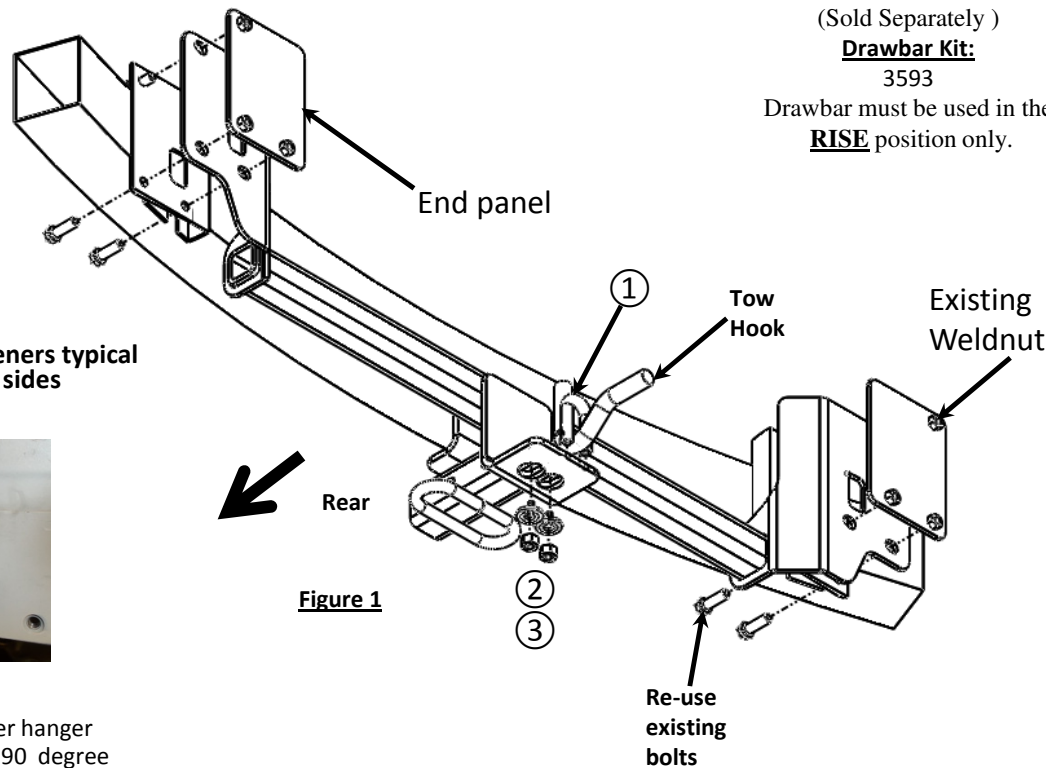
T27 Torxbit Socket

or



**Figure 3**

Fascia trimming



**Figure 1**



Conical washer  
Teeth side  
against hitch

Note: Fasteners typical both sides



**Figure 2**

Using pliers bend bumper hanger support to approximately 90 degree for clearance.

- Remove plastic rivet** – Remove the (2) plastic rivets that fasten the fascia tabs to the vehicle and trunk pan. Note: Remove the center of the rivet with a flat screwdriver. Keep for re-installation.
- Open trunk remove tail lights and gasket** – remove the plastic cover disc covering the screw on the tail light and fascia attachment to trunk with small screwdriver (3) each side. Remove the fasteners with 10mm socket. Remove lower trunk gasket. To remove tail light gently push rearward on tail lights at the back of the light while gently pulling outward from the forward end. Disconnect the wiring. Set aside.
- Remove lower rear fascia** – remove (2) philip screws in wheel well. Both sides. Remove (1) philip screw each side, located inside fascia at the lower attaching points between rear fascia and rear side panel of vehicle. Both sides. Gently separate the lower fascia trim from the rear side panel pulling the trim upward (if necessary apply minimum pressure to tabs located on the inside of the rear fascia. At the tail lights apply gentle pressure to support bracket tabs. Continue to gently pull on fascia while lifting upward from the bottom of the fascia. Carefully set the rear fascia aside.
- Remove bumper** - remove bumper using 12mm socket (6) bolts. Carefully set the bumper aside. Using pliers bend bumper hanger support to approximately 90 degree for clearance. See Figure 2
- Hitch installation** – Hang the U-bolt on the tow hook. Raise the hitch and hang it on the bumper support on the end panel. Raise the bumper to sandwich the hitch, align the holes and reinstall the original bolts removed in step 4. Tighten to hold hitch in place. Install remaining fastener for the tow hook.
- Tighten all M8 fasteners with torque wrench to 20 Lb.-Ft. (27 N\*M) and all 3/8 GR 5 fasteners with torque wrench to 30 Lb.-Ft. (41 N\*M)**

**Proper torque is needed to keep the hitch secure to the vehicle when towing.**

- Trim fascia**- locate the center of bottom panel (tow hook) and trim 3-3/4" x 3-3/4" wide area, see Figure 3. Recommend radius in corners.
- Re-install fascia** - Reinstall all fasteners, fascia and taillights removed in Step 1 - 3.

Note: check hitch frequently, making sure all fasteners and ball are properly tightened. If hitch is removed, plug all holes in trunk pan or other body panels to prevent entry of water and exhaust fumes. A hitch or ball which has been damaged should be removed and replaced. Observe safety precautions when working beneath a vehicle and wear eye protection. Do not cut access or attachment holes with a torch.

This product complies with safety specifications and requirements for connecting devices and towing systems of the state of New York, V.E.S.C. Regulation V-5 and SAE J684.

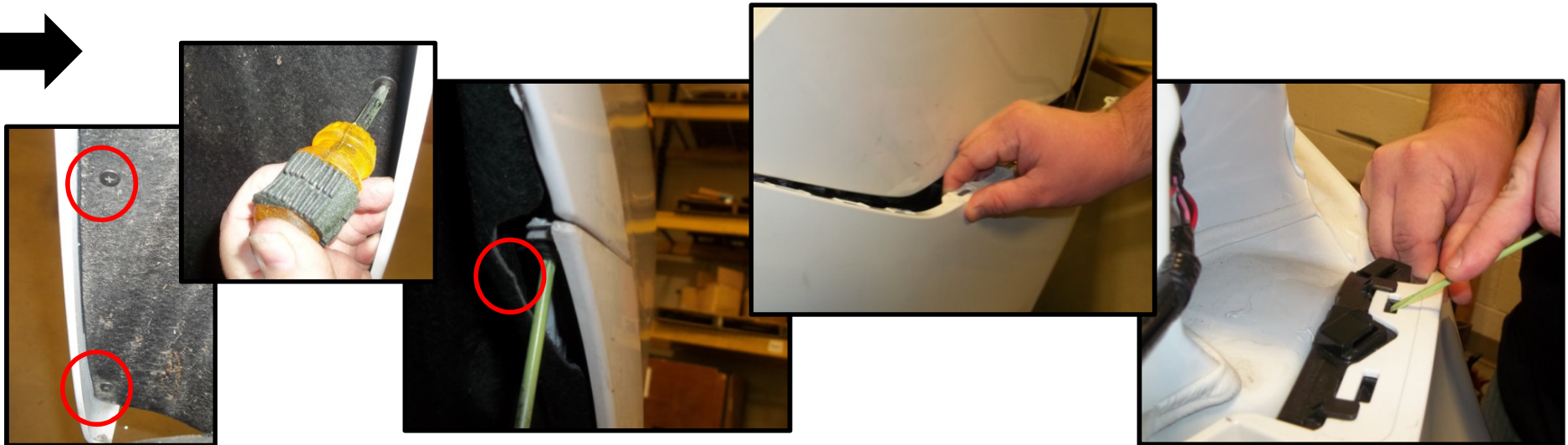
1. **Remove plastic rivet** – Remove the (2) plastic rivets that fasten the fascia tabs to the vehicle and trunk pan. Note: Remove the center of the rivet with a flat screwdriver. Keep for re-installation.



2. **Open trunk remove tail lights and gasket** – remove the plastic cover disc coving the screw on the tail light and fascia attachment to trunk with small screwdriver (3) each side. Remove the fasteners with 10mm socket. Remove lower trunk gasket. To remove tail light gently push rearward on tail lights at the back of the light while gently pulling outward from the forward end. Disconnect the wiring. Set aside.



3. **Remove lower rear fascia** – remove (2) philip screws in wheel well. Both sides. Remove (1) philip screw each side, located inside fascia at the lower attaching points between rear fascia and rear side panel of vehicle. Both sides. Gently separate the lower fascia trim from the rear side panel pulling the trim upward (if necessary apply minimum pressure to tabs located on the inside of the rear fascia. At the tail lights apply gentle pressure to support bracket tabs. Continue to gently pull on fascia while lifting upward from the bottom of the fascia. Carefully set the rear fascia aside.

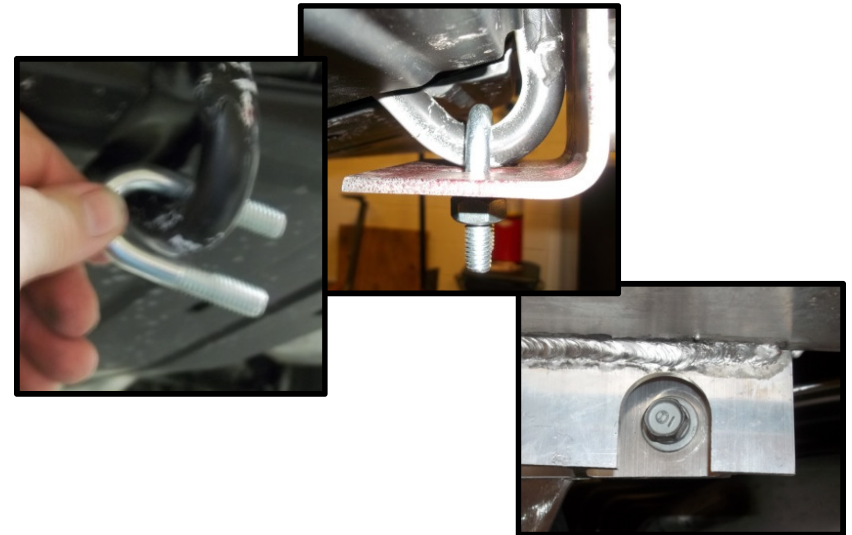




4. **Remove bumper** - remove bumper using 12mm socket (6) bolts. Carefully set the bumper aside. Using pliers bend bumper hanger support to approximately 90 degree for clearance.



5. **Hitch installation** – Hang the U-bolt on the tow hook. Raise the hitch and hang it on the bumper support on the end panel. Raise the bumper to sandwich the hitch, align the holes and reinstall the original bolts removed in step 4. Tighten to hold hitch in place. Install remaining fastener for the tow hook.

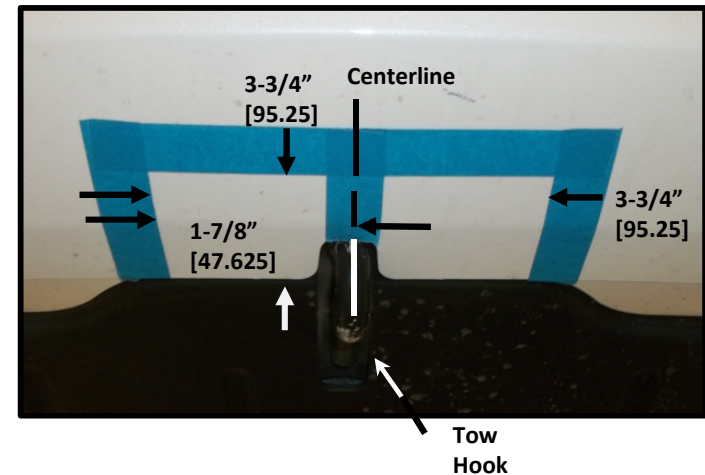


6. **Tighten all M8 CL8 fasteners with torque wrench to 20 Lb.-Ft. (27 N\*M) and all 3/8 GR 5 fasteners with torque wrench to 30 Lb.-Ft. (41 N\*M)**

⚠ Proper torque is needed to keep the hitch secure to the vehicle when towing.



7. **Trim fascia**- locate the center of bottom panel (tow hook) and trim 3-3/4" x 3-3/4" wide area, see Figure 3. Recommend radius in corners.



8. **Re-install fascia** - Reinstall all fasteners , fascia and tail light S removed in Step 1 - 3.