

Installation Instructions

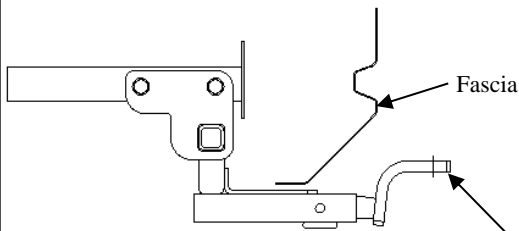
Part Numbers:

Kia Soul

24915

60347

77302



(Sold separately)

Drawbar Kit:
3593

Drawbar must be used in the **RISE** position only.

**Do Not Exceed Lower of Towing Vehicle
Manufacturer's Rating or**

2000 LB (908 Kg.) Max Gross Trailer Weight

200 LB (90.8 Kg.) Max Tongue Weight

Hitch Shown In Proper Position

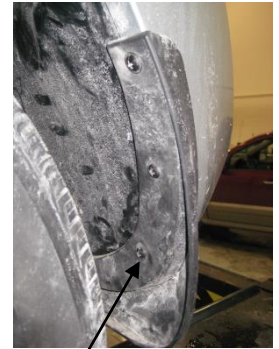
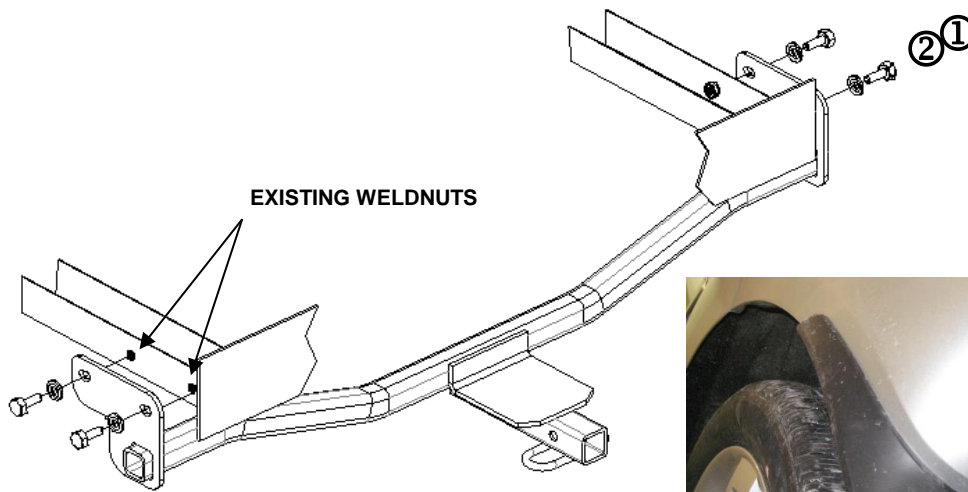
Equipment Required: Torque wrench

Fastener Kit: 24915F

Wrenches: 17mm Socket and Ratchet Wrench,
Phillips screw driver

Drill Bits: None

Wiring Access Location: SUV3,4



REMOVE FASTENERS

INNER WHEEL WELL / SPLASH GUARD

①	Qty. (4)	Hex Bolt, M10 x 1.25 x 30mm CL8.8	②	Qty. (4)	Conical Toothed Washer 3/8"
---	----------	-----------------------------------	---	----------	-----------------------------

1. Lower exhaust by removing the rubber exhaust hanger.
2. Remove the inner wheel well and splash guards from vehicle, both sides.
3. Remove tow hook from passenger's side frame rail and return to vehicle owner.
4. Raise hitch into position and loosely install the M10 bolts and conical toothed washers as shown.
5. Pull hitch rearward and tighten all fasteners using a torque wrench as specified below.
6. Reinstall muffler hanger.
7. Reinstall the inner wheel well and splash guards.

Tighten all M10 CL8.8 fasteners with torque wrench to 42 Lb.-Ft. (57 N*M)

Note: check hitch frequently, making sure all fasteners and ball are properly tightened. If hitch is removed, plug all holes in trunk pan or other body panels to prevent entry of water and exhaust fumes. A hitch or ball which has been damaged should be removed and replaced. Observe safety precautions when working beneath a vehicle and wear eye protection. Do not cut access or attachment holes with a torch.

This product complies with safety specifications and requirements for connecting devices and towing systems of the state of New York, V.E.S.C. Regulation V-5 and SAE J684.