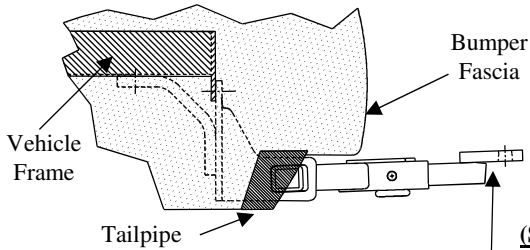


Installation Instructions

Honda Accord Crosstour
All models including
EX- 2WD, EXL-2WD & EXL -AWD

Part Numbers:

24852
60268
77224



Hitch Shown In Proper Position

Equipment Required:

Fastener Kit: 24852F

Wrenches: 10mm, 13mm, 17mm

Other tools: Spray lubricant, metal shears

(Sold separately)
Drawbar Kit:
3590

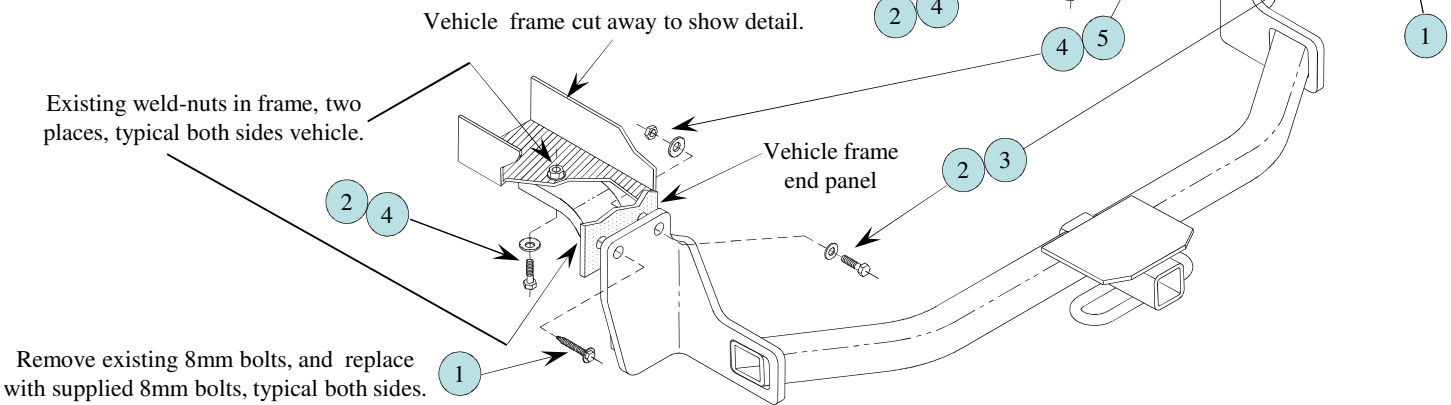
Wiring Access Location: SUV3

Do Not Exceed Lower of Towing Vehicle Manufacturer's Rating or

Hitch type	Max Gross Trailer WT (LB)	Max Tongue WT (LB)
Weight Carrying Ball Mount	2000 (908 Kg)	200 (91 Kg)

Vehicle frame and frame end panel not shown passenger side of vehicle.

Drop exhaust down both sides of vehicle so that muffler heat shields can be removed and trimmed. See next page for trimming details. Hitch will be installed after heat shield trimming is done and heat shields are bolted back on vehicle.



1	Qty. (2)	M8-1.25 x 55mm Gr. 9.8 Bolt /Washer	4	Qty. (4)	Conical Toothed Washer, 7/16"
2	Qty. (4)	M10-1.25 x 40mm Gr. 8.8 Hex Bolt	5	Qty. (2)	Hex Nut, M10-1.25
3	Qty. (2)	Flat Washer, 3/8"			Another fine Cequent Performance Products hitch

- Drop mufflers down both sides of vehicle by removing rubber isolator hangers off of metal pegs from behind and in front of mufflers. Also drop both rubber isolator hangers supporting exhaust located further forward near rear axle. It helps to spray a lubricant on rubber isolators to allow them to slide off of metal pegs more easily.
- Remove existing 8mm bolts from frame end panels as shown above both sides of vehicle. Return these bolts to owner as they will be replaced.
- It may also help to remove plastic push rivets holding plastic bumper cover both sides on bottom of bumper. Save these as they will be reinstalled. See picture next page showing detail.
- Remove both muffler heat shields attached to bottom of vehicle frame on each side of vehicle. They are attached with (3) bolts per shield. Save bolts to reinstall shield after trimming. Heat shields must be trimmed and reinstalled before installing hitch. See pictures on next page for detail on how to trim muffler heat shields.
- After heat shields have been trimmed and reinstalled you can now raise hitch in to place. Install supplied 8mm-1.25 bolt/washers through hitch and into existing weldnuts both sides of vehicle where bolts were removed in Step 2.
- Install supplied 10mm-1.25 bolts with flat washers through hitch and through existing holes in frame end panels on both sides of hitch. Attach supplied conical toothed washers and 10mm hex nuts on these bolts.
- Install supplied 10mm-1.25 bolts and conical toothed washers through hitch side arms on both sides of vehicle and into existing weldnuts in vehicle frame.
- Now torque all fasteners from above steps to correct torque specs shown below.
- Reinstall muffler isolator hangers removed in Step 1. Remember to reinstall both rubber exhaust hangers further forward near axle.
- You are done.

Tighten 8mm-1.25 Gr. 9.8 bolts with torque wrench to 25 Lb.-Ft. (34 N*M) Tighten 10mm-1.25 Gr. 8.8 bolts with torque wrench to 42 Lb.-Ft. (57 N*M)

Note: check hitch frequently, making sure all fasteners and ball are properly tightened. If hitch is removed, plug all holes in trunk pan or other body panels to prevent entry of water and exhaust fumes. A hitch or ball which has been damaged should be removed and replaced. Observe safety precautions when working beneath a vehicle and wear eye protection. Do not cut access or attachment holes with a torch.

This product complies with safety specifications and requirements for connecting devices and towing systems of the state of New York, V.E.S.C. Regulation V-5 and SAE J684.

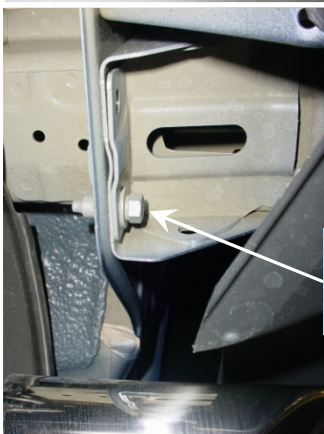
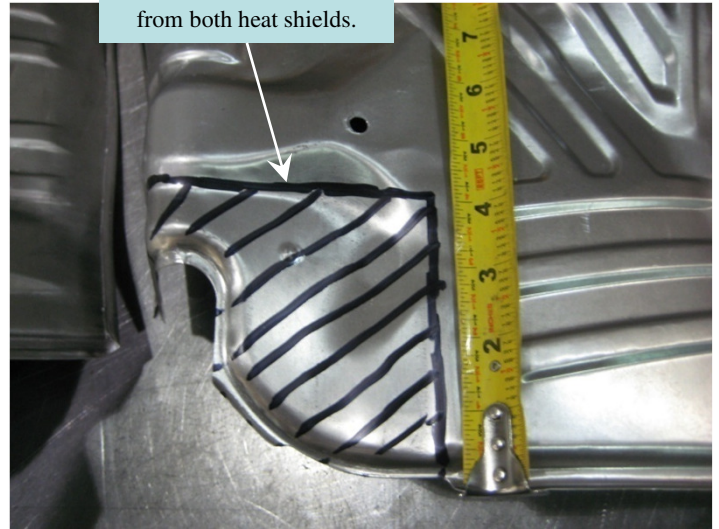
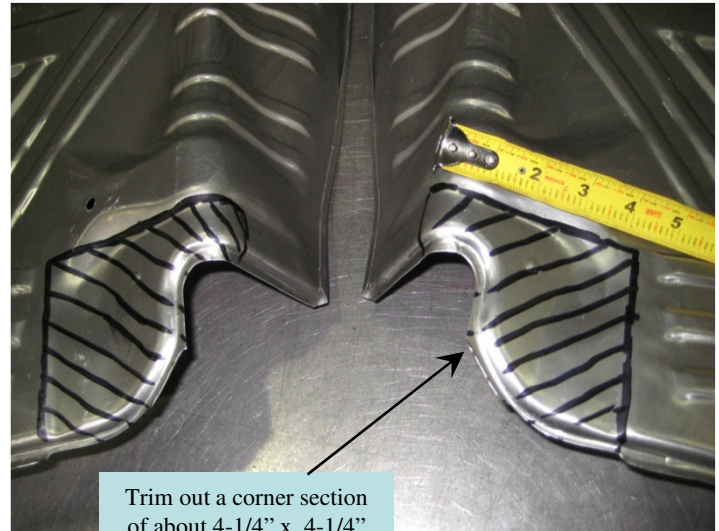
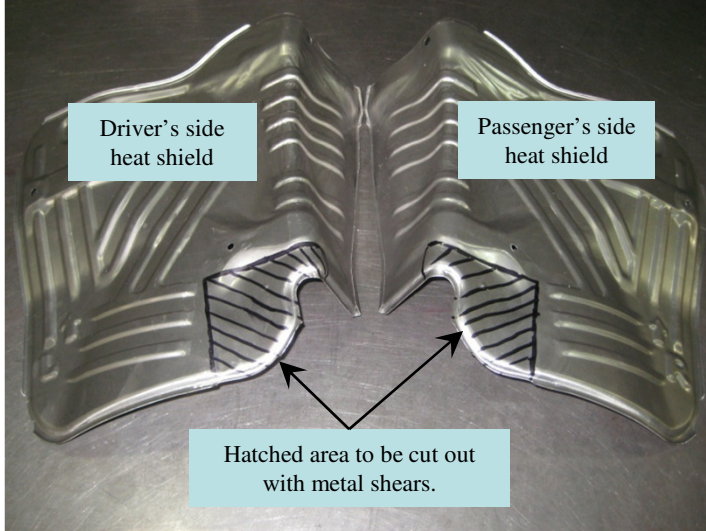
Installation Instructions

Honda Accord Crosstour
All models including
EX- 2WD, EXL-2WD & EXL -AWD

Part Numbers:

24852
60268
77224

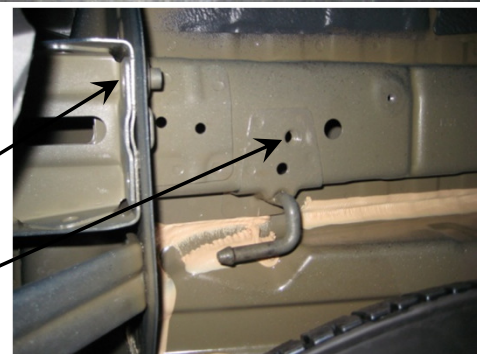
Detail showing how to trim muffler heat shields.



Side view underneath vehicle showing plastic push rivet removed from bumper support bracket. This allows you to pull bumper cover back for better hand and wrench access.

View underneath vehicle showing existing 8mm bolt to remove before installing hitch. Typical both sides of vehicle. Return to vehicle owner.

View underneath vehicle showing existing 10mm weldnut in frame.



Tighten 8mm-1.25 Gr. 9.8 bolts with torque wrench to 25 Lb.-Ft. (34 N*M) Tighten 10mm-1.25 Gr. 8.8 bolts with torque wrench to 42 Lb.-Ft. (57 N*M)

Note: check hitch frequently, making sure all fasteners and ball are properly tightened. If hitch is removed, plug all holes in trunk pan or other body panels to prevent entry of water and exhaust fumes. A hitch or ball which has been damaged should be removed and replaced. Observe safety precautions when working beneath a vehicle and wear eye protection. Do not cut access or attachment holes with a torch.

This product complies with safety specifications and requirements for connecting devices and towing systems of the state of New York, V.E.S.C. Regulation V-5 and SAE J684.