

# INSTALLATION INSTRUCTIONS

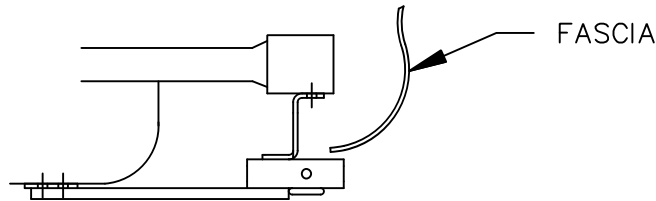
N77028 VEHICLE

INFINITI I30  
INFINITI I35  
NISSAN MAXIMA

## EQUIPMENT REQUIRED:

- WIRING ACCESS LOCATION: PC3, PC4  
 DRILL BITS: 1/2  
 HITCH REQUIRES 1/2" PIN AND CLIP  
 WRENCHES: (TIGHTEN ALL FASTENERS WITH TORQUE WRENCH) 7/8

2000 LB MAX GROSS TRAILER WT  
 200 LB MAX TONGUE WEIGHT  
 DO NOT EXCEED TOWING VEHICLE RATINGS



HITCH SHOWN IN PROPER POSITION

- 95-96 NISSAN MAXIMA  
 2000 AND LATER NISSAN MAXIMA  
 95-01 INFINITI I 30  
 02 & LATER INFINITI I 35

- 1/2-13 X 1.75 GR5  
 CARRIAGE BOLT  
 1/4 X 1 X 3 BLOCK  
 FLAT WASHER  
 LOCK WASHER  
 NUT

- 2000 AND LATER  
 INFINITI I-30 & I-35  
 ATTACHMENT  
 HOLES

TRUNK PAN

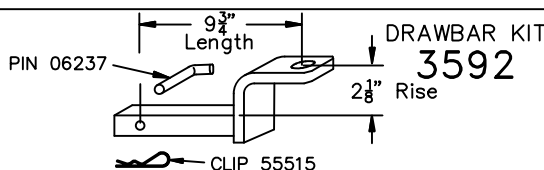
REMOVE SPARE TIRE BEFORE  
 DRILLING HOLES IN TRUNK PAN.

- 95-96 NISSAN MAXIMA  
 2000 AND LATER NISSAN MAXIMA  
 95-01 INFINITI I 30  
 02 & LATER INFINITI I 35

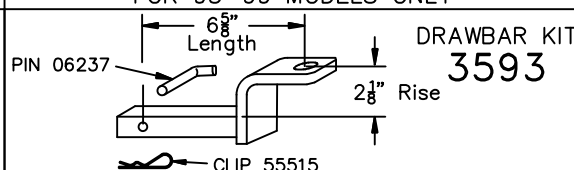
- 1/2-13 X 1.75 GR5  
 CARRIAGE BOLT  
 1/4 X 1 X 3 BLOCK  
 FLAT WASHER  
 LOCK WASHER  
 NUT

- FOR VEHICLES WITH ALUMINUM BUMPERS, PLACE TWO (2) GALVANIC ISOLATORS ON EACH BUMPER MOUNTING TAB AND CUT OUT GALVANIC ISOLATOR SHIELDS IN AREA OF HOLES (BUMPER MOUNTING TABS MUST BE COMPLETELY COVERED WITH THE GALVANIC ISOLATOR SHIELDS WHERE IT MAKES CONTACT WITH THE ALUMINUM BUMPER).
- RAISE HITCH INTO POSITION CENTERED ON VEHICLE.
- WITH HITCH IN POSITION, MARK LOCATION OF HOLES ON VEHICLE BUMPER AND TRUNK PAN.
- REMOVE SPARE TIRE BEFORE DRILLING HOLES IN TRUNK PAN.
- DRILL 1/2" HOLES IN VEHICLE BUMPER AND TRUNK PAN AT LOCATIONS MARKED IN STEP 3.
- FOR VEHICLES WITH ALUMINUM BUMPERS, APPLY GALVANIC ISOLATOR SHIELDS ON 1/4 X 1 X 3 BLOCKS THAT CONTACT THE BUMPER.
- RAISE HITCH BACK INTO POSITION AND INSTALL FASTENERS AS SHOWN ABOVE AND REPLACE SPARE TIRE AND SEAL ALL HOLES IN TRUNK PAN TO PREVENT WATER AND EXHAUST FUMES FROM ENTERING VEHICLE. TIGHTEN ALL 1/2 GR5 FASTENERS TO 75 LB.-FT.

### STANDARD DRAWBAR (Sold Separately)



### OPTIONAL DRAWBAR (SOLD SEPARATELY) FOR 95-99 MODELS ONLY



USE ONLY THE DRAWBAR SHOWN FOR CORRECT BUMPER CLEARANCE AND HEIGHT.  
 DRAWBAR MUST BE USED IN THE RISE POSITION ONLY.

THIS PRODUCT COMPLIES WITH SAFETY SPECIFICATIONS AND REQUIREMENTS FOR CONNECTING DEVICES AND TOWING SYSTEMS OF THE STATE OF NEW YORK AND V.E.S.C. REGULATION V-5.

APPROX WEIGHT (LB.)	FASTENER KIT
14.5	K24686

NOTE: Check hitch frequently, making sure all fasteners and ball are properly tightened. If hitch is removed, plug all holes in trunk pan or other body panels to prevent entry of water and exhaust fumes. A hitch or ball which has been damaged should be removed and replaced. Observe safety precautions when working beneath a vehicle and wear eye protection. Follow car maker's specs for maximum trailer weight and tongue weight. Do not cut access or attachment holes with a torch.

Cequent Performance Products

# INSTALLATION INSTRUCTIONS

VEHICLE

INFINITI I30  
INFINITI I35  
NISSAN MAXIMA

EQUIPMENT REQUIRED:

WIRING ACCESS LOCATION:

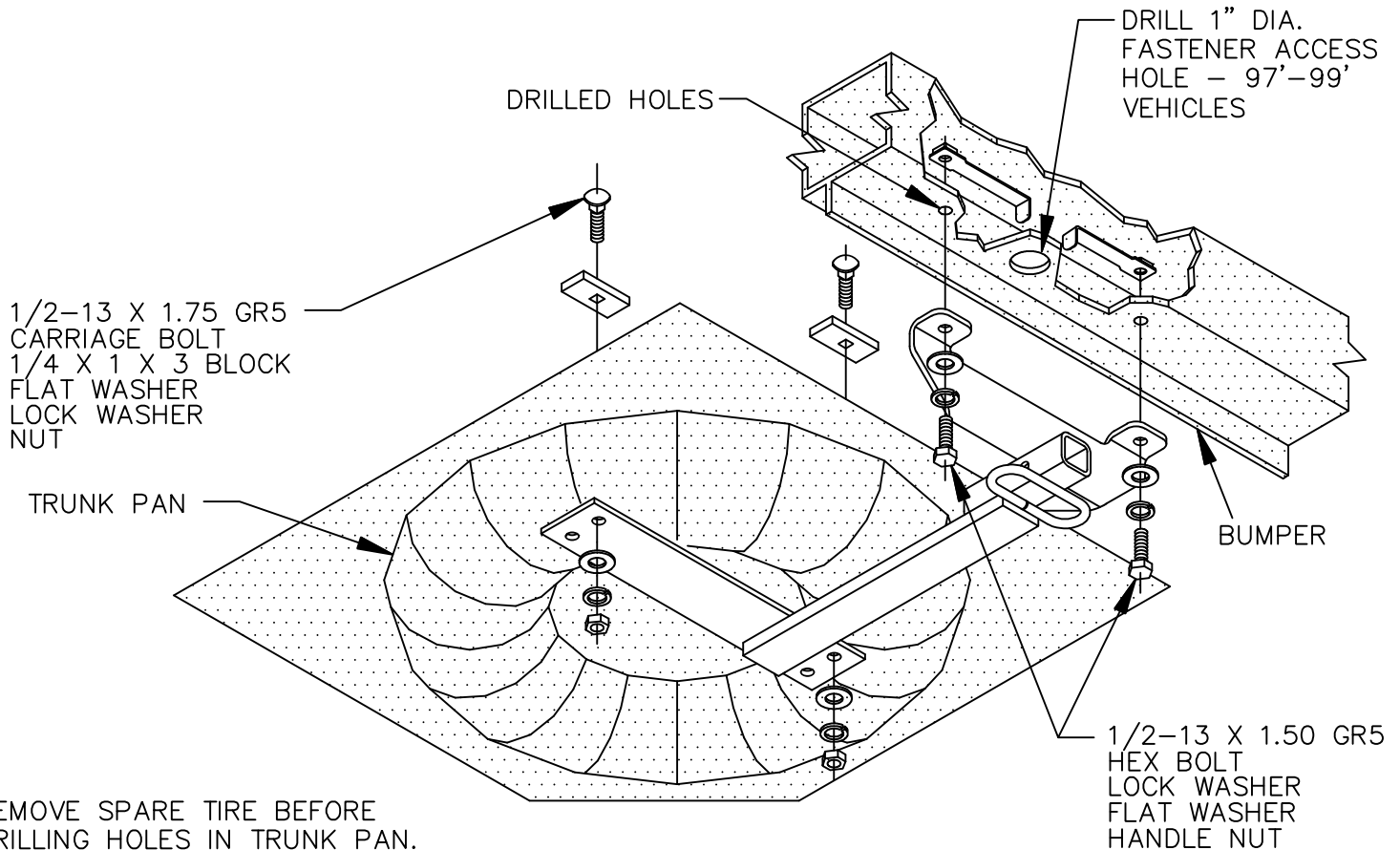
DRILL BITS: 1/2", 1" HOLE SAW

HITCH REQUIRES 1/2" PIN AND CLIP

WRENCHES: (TIGHTEN ALL FASTENERS WITH TORQUE WRENCH) 3/4, 7/8

2000 LB MAX GROSS TRAILER WT  
200 LB MAX TONGUE WEIGHT  
DO NOT EXCEED TOWING VEHICLE RATINGS

## 97'-99' NISSAN MAXIMA



## 97'-99' NISSAN MAXIMA

1. RAISE HITCH INTO POSITION CENTERED ON VEHICLE.
2. WITH HITCH IN POSITION, MARK LOCATION OF HOLES ON VEHICLE BUMPER AND TRUNK PAN.
3. REMOVE SPARE TIRE BEFORE DRILLING HOLES IN TRUNK PAN.
4. DRILL 1/2" HOLES IN VEHICLE BUMPER AND TRUNK PAN AT LOCATIONS MARKED IN STEP 3.
5. USING A HOLE SAW DRILL A 1" ACCESS HOLE THRU THE BOTTOM OF THE BUMPER CENTERED BETWEEN THE HITCH ATTACHMENT HOLES.
6. RAISE HITCH BACK INTO POSITION AND INSTALL FASTENERS AS SHOWN ABOVE AND REPLACE SPARE TIRE AND SEAL ALL HOLES IN TRUNK PAN TO PREVENT WATER AND EXHAUST FUMES FROM ENTERING VEHICLE.

TIGHTEN 1/2 CARRIAGE BOLTS TO 75 LB.-FT.  
TIGHTEN 1/2 HANDLE NUTS TO 50 LB.-FT.

THIS PRODUCT COMPLIES WITH SAFETY SPECIFICATIONS AND REQUIREMENTS FOR CONNECTING DEVICES AND TOWING SYSTEMS OF THE STATE OF NEW YORK AND V.E.S.C. REGULATION V-5.

APPROX WEIGHT (LB.)

NOTE: Check hitch frequently, making sure all fasteners and ball are properly tightened. If hitch is removed, plug all holes in trunk pan or other body panels to prevent entry of water and exhaust fumes. A hitch or ball which has been damaged should be removed and replaced. Observe safety precautions when working beneath a vehicle and wear eye protection. Follow car maker's specs for maximum trailer weight and tongue weight. Do not cut access or attachment holes with a torch.

Cequent Performance Products