

# Installation Instructions

Part Numbers:

**Volkswagen Touareg**

**75950**

**Porsche Cayenne**

**44758**

**Audi Q7**

**87676**

Fascia Trim may be required,  
Obtain owners permission before cutting

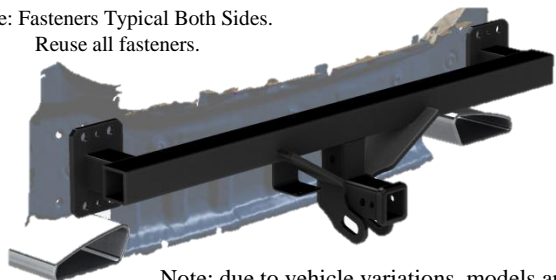
## Equipment Required:

**Fastener Kit:** 75950F

**Wrenches:** Sockets: M11, M18,  
T15, T20, T30, 6" Extension, Torque  
Wrench, Trim Panel Tool, Dremel (or  
similar cutting tool)

**Drill Bits:** None

Note: Fasteners Typical Both Sides.  
Reuse all fasteners.



Note: due to vehicle variations, models and years, instruction may vary slightly.

## Do Not Exceed Lower of Towing Vehicle Manufacturer's Rating or

Hitch type	Max Gross Trailer WT (LB)	Max Tongue WT (LB)
Weight Distributing	<b>DO NOT USE WITH</b>	<b>SPRING BARS</b>
Weight Carrying Ball Mount	<b>7500 (3405 Kg.)</b>	<b>750 (340 Kg.)</b>

Accessory Rating **D**

**Wiring Access Location:** SUV1, SUV2

1. Open Lift Gate
2. Remove five Torx screws from Mud flap; four in wheel well (VW) two in wheel well Porsche (T25) (Figure 1), one on bottom of mud flap (T15) (Figure 2), (Note: Nut attached to bottom screw.) Both sides.
3. Remove four Torx Screws from bottom of bumper fascia (T25). Bumper fascia to vehicle. (Figure 3)
4. Remove one fastener from wheel well trim located at the bottom rear of trim. (Figure 4) Both sides.
5. Remove wheel well trim by carefully pulling away from vehicle. (Figure 5) Both sides.  
Note: Trim only needs to be removed halfway.
6. Remove the Torx Screws from under the trim; one on the side of wheel well (Figure 5) and one underneath (Figure 6). Both sides.
7. Remove vehicle tail lights.

### VW Touareg:

- Remove circular pop-out from driver side, inside the trunk. (Figure 7A)
- Remove rectangular pop-out from passenger side, inside the trunk. (Figure 7B)
- Loosen Plastic nut behind pop-outs using 11mm socket and a 6" extension.
- Remove tail lights by slowly pulling straight out, rearward of the vehicle and disconnect the electrical plug.
- Disconnect Electrical connection to back of light by pulling up on red tab to unlock clip and pulling straight out. (Figure 9)
- Remove two Torx screws from under the light (T30). Both sides. (Figure 9)
- Remove push pin. Push down on center of pin, then pry the head out. (Figure 10) Both sides.

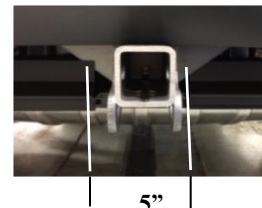
### Porsche Cayenne:

- Remove the black panel cover as shown in the photo. (Figures 8A)
- Remove the screws (3 per side) and carefully slide light rearward and disconnect the electrical plug.
- Remove the tailgate bumper pads. Both sides. (Figure 8B)

### Audi Q7:

- Remove (4) torx head screws on each side of the wheel well and 5 screws on the bottom.
  - Remove (4) 10mm nuts located inside of the spare tire well. Recommend using a 10mm deep socket and extension to remove the nuts.
  - Be careful not to drop nuts into body of vehicle.
  - Remove the panel in the center of the bumper; unsnapping the middle part in wheel opening.
  - Pull cover back and disconnect 2 electrical plugs.
8. Remove bumper fascia by carefully pulling away from vehicle. Start at the wheel wells, pulling straight out away from vehicle.  
1.NOTE: Must disconnect electrical connection before completely removing bumper fascia. (Figure 11)  
2.NOTE: Two people needed to help avoid damage to the bumper fascia.
  9. Remove Styrofoam insert if present. Varies by vehicle and model.
  10. Remove eight M12 bolts from bumper using M18 socket. (Figure 12)  
NOTE: Bumper should be supported as the bolts are removed.
  11. Install hitch reusing M12 bolts, removed in Step 14
  12. Tighten all fasteners to the required torque specification for M12 bolts.
  13. Trim Styrofoam insert to fit and reinstall or discard. Varies by vehicle and model.

Figure 13



### VW Touareg:

- Trim bottom bumper fascia. Mark a center line between fasteners on bottom of bumper fascia (Figure 3). Measure 2.5 inches from the center line on both sides and cut. (Figure 13)
- 14. Follow instructions in reverse order, torquing all screws and bolts to specifications below. **Remembering to re-attach all electrical plugs.**

Tighten all M12 fasteners with torque wrench to 83Lb.-Ft. (113 N\*M)  
Tighten all T30 Torx Screws with torque wrench to 3 Lb.-Ft. (4 N\*M)  
Tighten all T20 Torx Screws with torque wrench to 1.1 Lb.-Ft. (1.5 N\*M)

Note: check hitch frequently, making sure all fasteners and ball are properly tightened. If hitch is removed, plug all holes in trunk pan or other body panels to prevent entry of water and exhaust fumes. A hitch or ball which has been damaged should be removed and replaced. Observe safety precautions when working beneath a vehicle and wear eye protection. Do not cut access or attachment holes with a torch.

This product complies with safety specifications and requirements for connecting devices and towing systems of the state of New York, V.E.S.C. Regulation V-5 and SAE J684.

Torx screws  
(Wheel Well)



**FIGURE 1**

Torx screw with nut

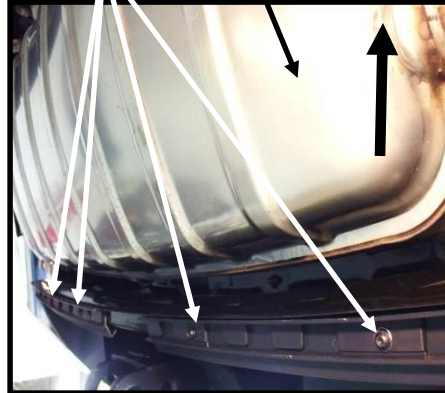


**FIGURE 2**

Torx screw  
(Bottom of vehicle)

Exhaust

(Vehicle Forward)



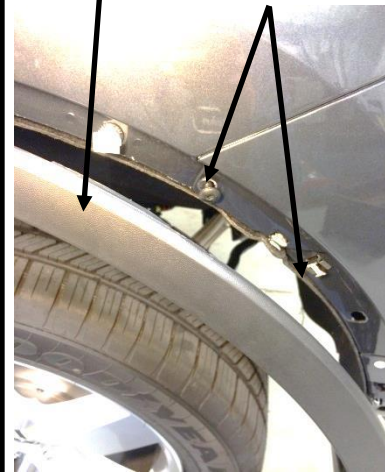
**FIGURE 3**

Fastener  
(Wheel Well Trim)



**FIGURE 4**

Wheel Well Trim  
Torx Screw (Side)



**FIGURE 5**

Wheel Well  
Torx Screw (Under)  
Wheel Well Trim



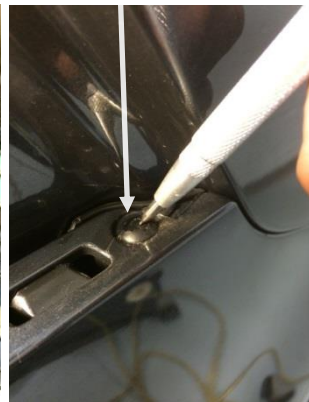
**FIGURE 6**

Electrical connection,  
Torx Screws (T30)



**FIGURE 9**

Push Pin



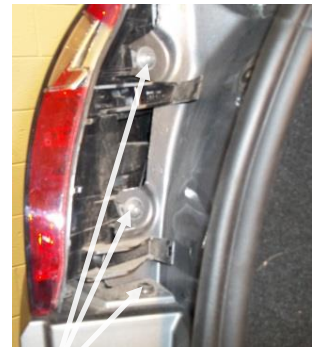
**FIGURE 10**

Plastic Nut (Driver Side)  
Pop-Out (Driver Side)



Pop-Out (Passenger Side)  
Plastic Nut

**FIGURE 7A & 7B**



Screws

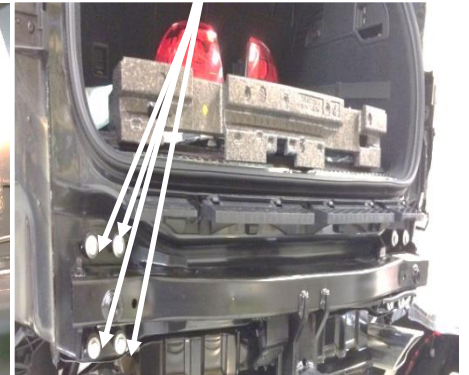
**FIGURE 8A**

Electrical Connection

M12 Bolts



**FIGURE 11**



**FIGURE 12**

Tailgate bumper pads



**FIGURE 8B**