

Installation Instructions

Part Numbers:

Audi Q5, Porsche Macan

75940

Fascia Trim may be required,

44755

Obtain owners permission before cutting

87666

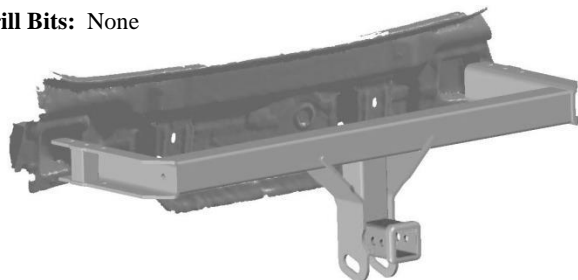
41580 UH

Equipment Required:

Fastener Kit: 75940F

Wrenches: M16 Socket; M10 Socket
T20, T30, 6" Extension, Torque Wrench,
Trim Panel Tool, Dremel (or similar
cutting tool)

Drill Bits: None



Do Not Exceed Lower of Towing Vehicle Manufacturer's Rating or

Hitch type	Max Gross Trailer WT (LB)	Max Tongue WT (LB)
Weight Distributing	DO NOT USE WITH	SPRING BARS
Weight Carrying Ball Mount	5000 (2270 Kg.)	750 (340 Kg.)

Wiring Access Location: SUV1, SUV2

NOTE: Fasteners Typical Both Sides.

Reuse all fasteners.

1. Open Lift Gate
2. Remove rear cargo flooring
3. Remove scuff plate. Unclip using Trim Panel Tool, and lifting vertically.
4. Disconnect electrical plug under scuff plate.
5. Remove two 10mm nuts from the two recessed bumper fascia studs under the scuff plate.
6. Remove the four fastening rings, two on each side, by removing two Torx Screws in each using the T-30 socket.
7. Remove the side rails on each side.
8. Remove the driver side interior side panel.
9. Remove the air compressor.
10. Remove Styrofoam air compressor platform using a Philips head screwdriver inserted into one of the holes on the clip and spinning the clips counter-clockwise to remove.
11. Remove 10mm nut from bumper fascia stud inside the compartment.
12. Remove Passenger side interior side panel.
13. Remove bottom fuse box with 10mm socket.
14. Remove 10mm Nut from bumper fascia stud inside the compartment.
15. Remove 4 Torx Screws under wheel well on both sides.
16. Remove 2 Torx Screws from underneath vehicle attaching fascia to trunk pan.
17. Remove bumper fascia by carefully pulling it out starting at the wheel wells, unclipping it.
NOTE: The four nuts from each bumper fascia stud must be removed by this point or the fascia will get damaged.
18. Unplug all plugs (lights and sensors) from back of bumper fascia.
19. Remove the entire wire harness from behind the bumper fascia, taking note on how it is woven and clipped into the fascia.
NOTE: Place Fascia in a safe spot where it will not be scratched or damaged.
NOTE: Place wire harness inside the trunk of the vehicle or other safe place so it does not get cut or damaged.
20. Remove the two rear retainer brackets from inside the trunk, using the 16mm Socket and 6" extension.
21. Remove aluminum bumper and discard or return to owner.
22. Insert hitch brackets into sleeves previously occupied by the aluminum bumper. Line up slots in the hitch brackets with rear retainer bracket holes in trunk.
23. Reinstall both rear retainer brackets using the 10mm bolts. . Torque to 44Lb-Ft (60N*m)
24. Carefully make accurate cut in fascia. See Fascia Trimming Instructions below.
25. Follow instructions in reverse order, torquing all screws and bolts to specifications below.

Tighten all M10 CL10.9 fasteners with torque wrench to 44Lb.-Ft. (60 N*M)

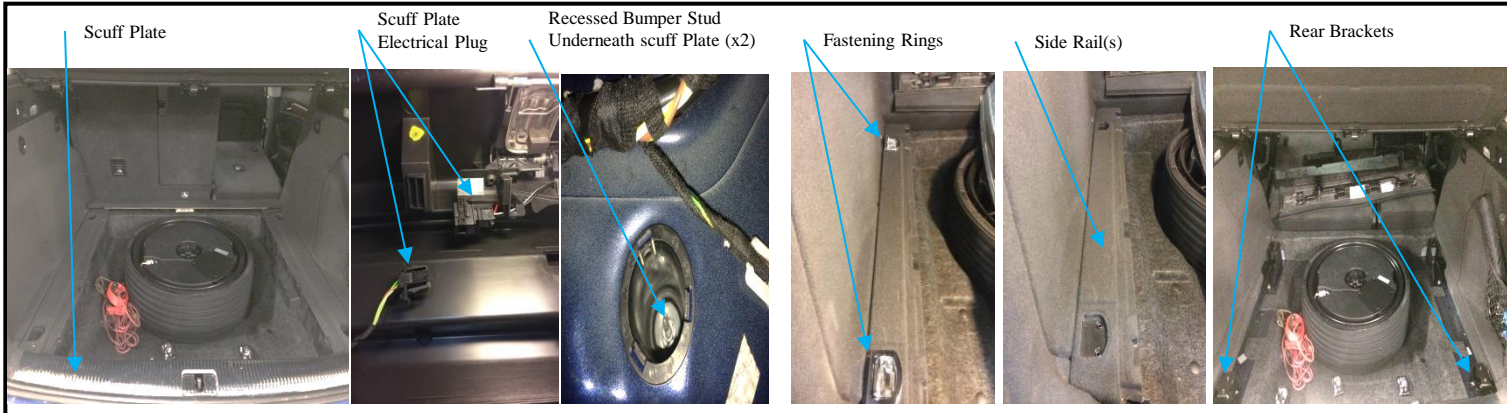
Tighten all M6 CL8.8 fasteners with torque wrench to 7 Lb.-Ft. (9.5 N*M)

Tighten all T30 Torx Screws with torque wrench to 3 Lb.-Ft. (4 N*M)

Tighten all T20 Torx Screws with torque wrench to 1.1 Lb.-Ft. (1.5 N*M)

Note: check hitch frequently, making sure all fasteners and ball are properly tightened. If hitch is removed, plug all holes in trunk pan or other body panels to prevent entry of water and exhaust fumes. A hitch or ball which has been damaged should be removed and replaced. Observe safety precautions when working beneath a vehicle and wear eye protection. Do not cut access or attachment holes with a torch.

This product complies with safety specifications and requirements for connecting devices and towing systems of the state of New York, V.E.S.C. Regulation V-5 and SAE J684.



Remove Scuff Plate using Trim Panel Tool. (Step 3)
 Disconnect electrical plug under Scuff Plate. (Step 4)
 Remove 10mm Nut (x2) from underneath Scuff Plate (Step 5).

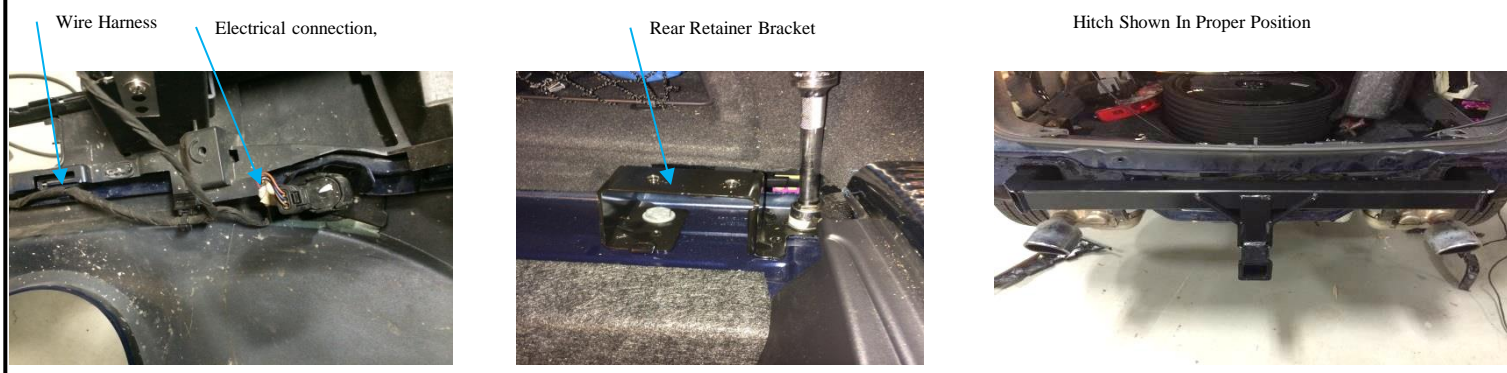
Remove Fastening Rings (x2 per side) using T30 socket (Step 6).
 Remove Side Rails (Step 7).



Remove Driver Side Interior Panel. (Step 8)
 Remove AC Compressor. (Step 9)
 Remove Styrofoam AC Compressor Platform. (Step 10)
 Remove 10mm Nut from Bumper Stud. (Step 11)

Remove Passenger Side Interior Panel. (Step 12)
 Remove Lower Fuse box (10mm Socket). (Step 13)
 Remove 10mm Nut from Bumper Stud, (Typical to Driver Side Bumper Nut). (Step 14)

Remove Torx Screw from Driver side and Passenger Side Wheel Well (x4). (T20 Socket) (Step 15)
 Remove Torx Screw from under vehicle- Bumper to Trunk Pan (x2). (Step 16)



Once Bumper Fascia has been removed:
 Unplug all connections from back of Fascia. (Step 18)
 Remove entire Wire Harness from back of Fascia. (Step 19)
 NOTE: Place Fascia in safe place to avoid scratches or other damage.

Remove 10mm bolts (x2) from Driver Side and Passenger Side Rear Retainer Brackets. (using 16mm Socket and 6" Extension). (Step 20)
 Remove Brackets. (Step 20)
 Remove Bumper, return to owner. (Step 21)

Slide Hitch Brackets into the sleeves of the vehicle that Previously held the bumper. (Step 22)
 Align Hitch Bracket with Rear Retainer Bracket holes. Replace Retainer Bracket. (Step 23)
 Replace 10mm Bolts. (Step 23)
 Torque 10mm Bolts to 44ft-lb (60N-m)

Tighten all M10 CL10.9 fasteners with torque wrench to 44Lb.-Ft. (60 N*M)
 Tighten all M6 CL8.8 fasteners with torque wrench to 7 Lb.-Ft. (9.5 N*M)
 Tighten all T30 Torx Screws with torque wrench to 3 Lb.-Ft. (4 N*M)
 Tighten all T20 Torx Screws with torque wrench to 1.1 Lb.-Ft. (1.5 N*M)

Note: check hitch frequently, making sure all fasteners and ball are properly tightened. If hitch is removed, plug all holes in trunk pan or other body panels to prevent entry of water and exhaust fumes. A hitch or ball which has been damaged should be removed and replaced. Observe safety precautions when working beneath a vehicle and wear eye protection. Do not cut access or attachment holes with a torch.

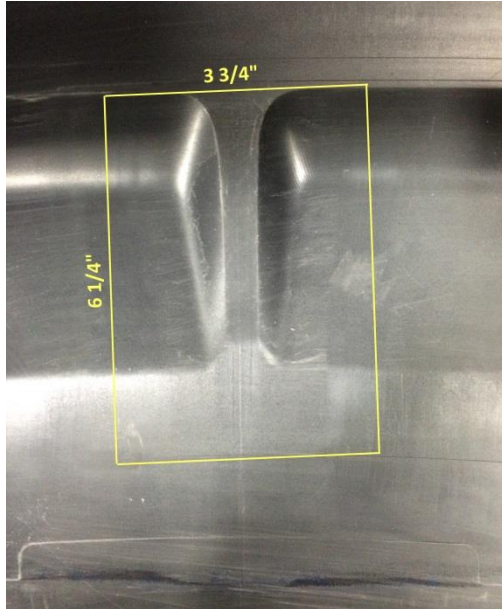
This product complies with safety specifications and requirements for connecting devices and towing systems of the state of New York, V.E.S.C. Regulation V-5 and SAE J684.

Fascia Trimming Instructions

For Audi Q5

NOTE: for models without Fascia popout.

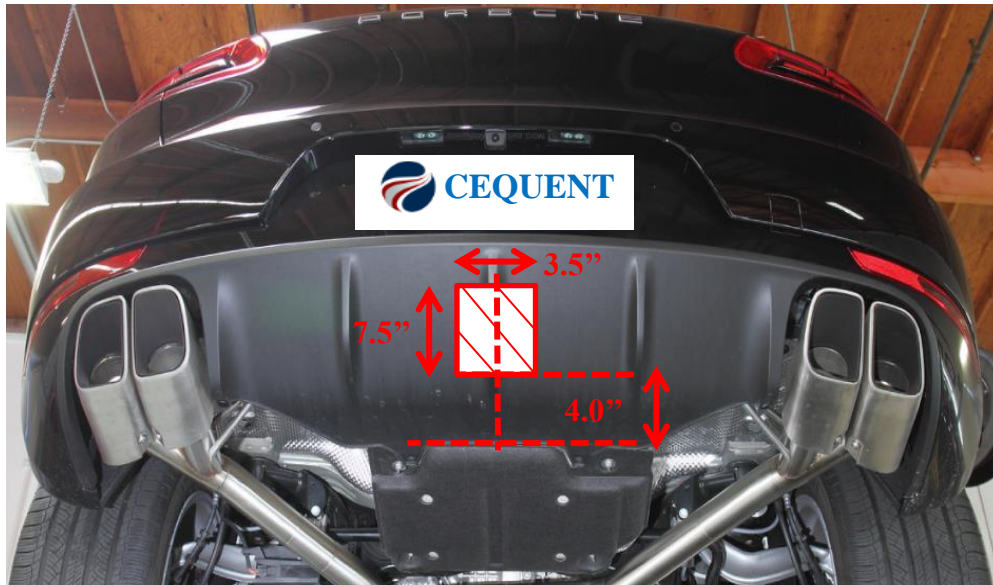
1. Locate the central rib inside the bumper fascia.
2. From the top of the rib, measure down 6 1/4", then scribe a line 3 3/4"; approximately 1 7/8" to the left and right. The scribed line should be centered with the rib, as shown.
3. Using the newly scribed line as the bottom portion of a rectangle, scribe the remaining sides of a rectangle; 6 1/4" tall by 3 3/4" wide.
4. Cut out scribed section.



Cut out scribed Section.

Top to bottom of section should be no greater than 6 1/4". Width section should be no greater than 3 3/4".

For Porsche Macan



For Macan S, and Macan Turbo, trim the fascia as shown.

For Macan GTS, trim as necessary

Note: check hitch frequently, making sure all fasteners and ball are properly tightened. If hitch is removed, plug all holes in trunk pan or other body panels to prevent entry of water and exhaust fumes. A hitch or ball which has been damaged should be removed and replaced. Observe safety precautions when working beneath a vehicle and wear eye protection. Do not cut access or attachment holes with a torch.

This product complies with safety specifications and requirements for connecting devices and towing systems of the state of New York, V.E.S.C. Regulation V-5 and SAE J684.