

# Installation Instructions

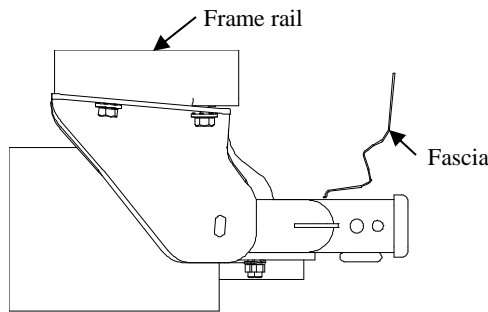
Part Numbers:

## Honda CR-V

75742

87621

44675



**Do Not Exceed Lower of Towing Vehicle  
Manufacturer's Rating or**

Hitch type	Max Gross Trailer WT (LB)	Max Tongue WT (LB)
Weight Distributing	<b>Not For Use With Spring Bars</b>	
Weight Carrying Ball Mount	<b>4500 (2043 Kg)</b>	<b>675 (306 Kg)</b>

### Hitch Shown In Proper Position

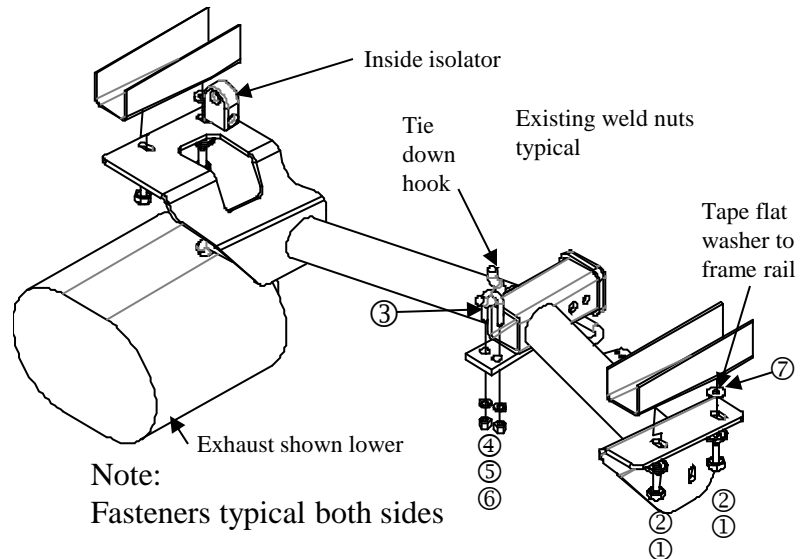
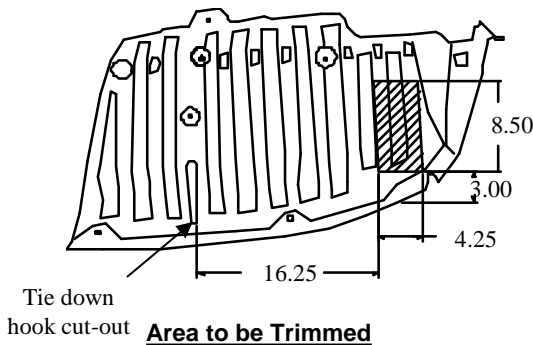
**Equipment Required:** Tape, Utility Knife, Tape Measure & Marking Pencil, Lubricant or Soapy water

**Fastener Kit:** 75742F

**Wrenches:** 10mm, 17mm, 11/16,  
Small Phillips head Screwdriver,

**Wiring Access Location:** SUV3

### Appearance panel



**Note:**  
Fasteners typical both sides

①	Qty. (4)	Hex Bolt M10X1.25X30 CL8.8	⑤	Qty. (2)	Lock Washer
②	Qty. (4)	Conical Washers	⑥	Qty. (2)	3/8 Hex Nut
③	Qty. (1)	3/8-16 U-Bolt	⑦	Qty. (2)	Flat washer 1/2"
④	Qty. (2)	Flat Washer 3/8"			

- Remove the appearance panel on driver's side, remove 5-plastic rivets, 3-hex nuts, 2 Phillips head screws located in wheel well behind the driver's side rear tire. This panel needs to be trimmed and reinstalled on vehicle.
- Run the (item 1) into existing weld nuts to clear the threads.
- Reinstall appearance panel if trimmed.
- Lower exhaust by removing rubber isolators from muffler hangers. Remove the outside isolator first then the inside isolator. Spraying a lubricant or soapy water on the metal hanger rod and the rubber isolator helps removal.
- Tape (item 7) flat washer to rearward weld nut location on both frame rails.
- Raise hitch into position.
- Install M10 fasteners as shown.
- Install the 3/8 U-Bolt through the vehicle tie down hook and through the tie down hook attachment of the receiver. Install flat washer, lock washers and 3/8 hex nuts as shown above.
- Tighten all fasteners to the required torque specification.
- Raise exhaust back into position and re-install rubber isolators.

Tighten all 3/8-16 GR5 fasteners with torque wrench to 30 Lb.-Ft. (41 N\*M)

Tighten all M10 CL8.8 fasteners with torque wrench to 38 Lb.-Ft. (52 N\*M)

Note: check hitch frequently, making sure all fasteners and ball are properly tightened. If hitch is removed, plug all holes in trunk pan or other body panels to prevent entry of water and exhaust fumes. A hitch or ball which has been damaged should be removed and replaced. Observe safety precautions when working beneath a vehicle and wear eye protection. Do not cut access or attachment holes with a torch.

This product complies with safety specifications and requirements for connecting devices and towing systems of the state of New York, V.E.S.C. Regulation V-5 and SAE J684.