

Part Numbers:

75713

87608

44662

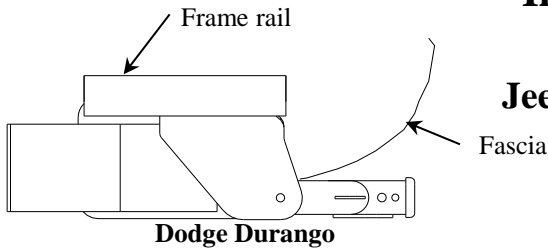
Installation Instructions

Dodge Durango

Jeep Grand Cherokee (Diesel)

**Do Not Exceed Lower of Towing Vehicle
Manufacturer's Rating or**

Hitch type	Max Gross Trailer WT (LB)	Max Tongue WT (LB)
Weight Distributing	7500 (3405 Kg)	900(408 Kg)
Weight Carrying Ball Mount	6000 (2724 Kg)	900(408 Kg)



Hitch Shown In Proper Position

Equipment Required:

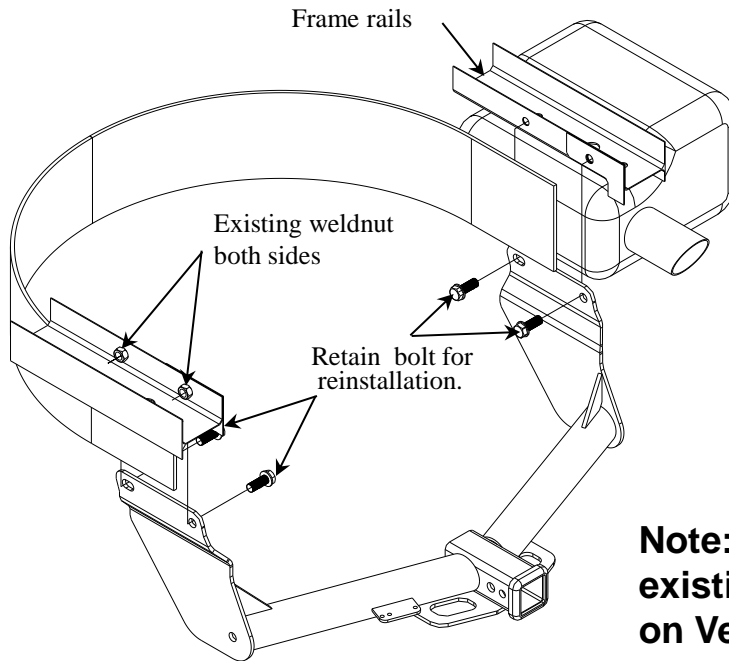
Fastener Kit: 75713F

Wrenches: 21mm

13mm

Wiring Access Location: SUV1, 2

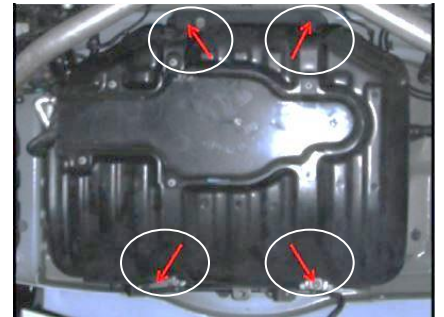
Note: Fasteners typical both sides



DEF Tank electrical connector



DEF Tank bolt locations



Note: Uses all existing Bolts on Vehicle

Diesel models only:

The Diesel Exhaust Fluid (DEF) tank will need to be lowered to access the bolts on the passenger side to install hitch. **Support the tank before removing the fasteners; the tank may weigh 100 lbs.**

A. (Diesel models) Lower the DEF tank by unclipping the electrical connection on the passenger side and sliding the clips off of the rear stud posts holding the tank.

B. (Diesel models) Using a 13mm socket, remove the (2) rear stud posts and the (2) forward hex bolts from the tank. (see photo above) **DO NOT REMOVE FILLER PIPE FROM THE TANK.** The tank is now free to rotate slightly downward on the passenger side for access to the bolts/weldnuts.

1. (All other models) Lower the spare tire. (If present)
2. Remove (4) existing M14 bolts (Do Not clean the threads). Retain bolt for reinstallation.
3. Raise hitch into position as shown and install fasteners as shown. If excess caulking on the frame rail interferes with hitch installation lower hitch and scrape excess caulking for installation.
4. Tighten all fasteners to called-out torque specification.
5. Raise spare tire back into position.

C. (Diesel models) Reinstall DEF tank if lowered on diesel models and reconnect electrical components. Torque the studs to 21 lb-ft and the DEF tank hex bolts to 24 lb-ft.

Tighten all M14 fasteners with torque wrench to 115 Lb.-Ft. (156 N*M)

Note: check hitch frequently, making sure all fasteners and ball are properly tightened. If hitch is removed, plug all holes in trunk pan or other body panels to prevent entry of water and exhaust fumes. A hitch or ball which has been damaged should be removed and replaced. Observe safety precautions when working beneath a vehicle and wear eye protection. Do not cut access or attachment holes with a torch.

This product complies with safety specifications and requirements for connecting devices and towing systems of the state of New York, V.E.S.C. Regulation V-5 and SAE J684.

Find more Reese Towpower products on our website.

Accept no compromises, choose only quality trailer hitches and towing.