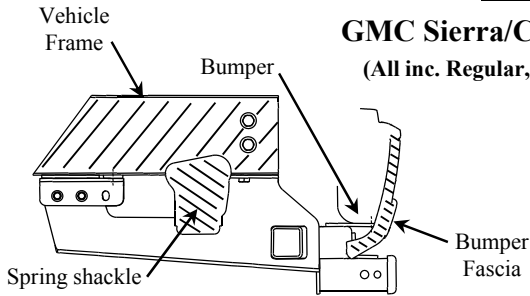


Installation Instructions

Part Numbers:

GMC Sierra/Chevrolet Silverado 2500 & 3500 HD Pickups.
 (All inc. Regular, Crew, Extended & Dually - 2 & 4WD Long & Short-bed)
GMC Denali HD Crew-Cab Pickup.

75707
87602
44653
75501



Hitch Shown In Proper Position

(Shown on short bed with bolt-on bracket)

Equipment Required:

Fastener Kit: 75707F

Wrenches: 13mm, 21mm, 22mm, 3/4", 7/8"

Drill Bits: None

Other items: Plastic cutting tool,
 (short bed as needed. (heat shield))

Do Not Exceed Lower of Towing Vehicle Manufacturer's Rating or

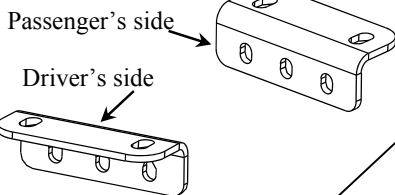
Hitch type	Max Gross Trailer WT (LB)	Max Tongue WT (LB)
Weight Distributing	12,000 (5448 Kg)	1200 (545 Kg)
Weight Carrying Ball Mount	8000 (3632 Kg)	800 (363 Kg)

Wiring Access Location: PU3

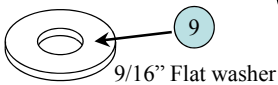
This side shows short-bed configuration

Figure 1.

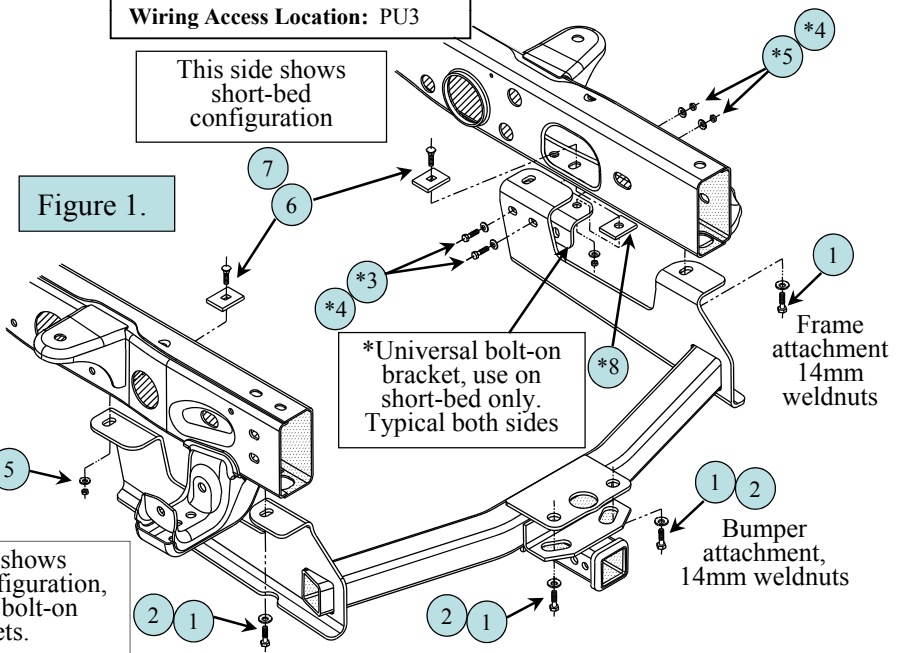
(2) Bolt-on brackets supplied. Use on short-bed trucks only. Same bracket just rotate for other side.



See next page for detail on short-bed trucks.



This side shows long-bed configuration, do not use bolt-on brackets.



1	Qty. (4)	Hex Bolt, M14 x 2.0 x 45mm CL10.9	5	Qty. (6)	Hex Nut, 1/2"-13
2	Qty. (4)	Conical Toothed Washer, 5/8" (black color)	6	Qty. (2)	Carriage Bolt, 1/2"-13 x 2" Gr.5
3	Qty. (4)	Hex Bolt, 1/2"-13 x 1-1/2" Gr.5 (shortbed only)	7	Qty. (2)	Block, 1-1/2" x 2" with square hole
4	Qty.(10)	Conical Toothed Washer, 1/2" (gold color)	8	Qty. (2)	Block, 1-1/2" x 2" with round hole (shortbed only)

- Lower spare tire from underneath of truck for ease of installation. Also remove existing 14mm bolts from end of each truck frame rail. Return bolts to vehicle owner. If truck has existing hitch remove bumper bolts also.
- On short bed;trucks, remove rearmost 8mm bolt holding plastic heat shield to bottom of frame on passenger's side. See picture 1. next page.
- For short bed trucks, attach bolt-on brackets supplied with hitch to hitch brackets as shown above. Torque to specs below.
- For long-bed trucks, discard bolt-on brackets or give to vehicle owner explaining that they are not needed for 8' bed applications.
- Raise hitch into position locating slots in hitch over existing weldnuts in truck bumper and end of truck frame rails.
- For short-bed trucks sandwich tab of plastic heat shield between hitch and frame underneath on passenger side of truck. In some cases it may be necessary to trim plastic gusset on heat shield to allow shield to stay in place. See picture next page.
- Install supplied 14mm bolts and conical toothed washers into existing weldnuts as shown above. On forward attachments install supplied carriage bolts and blocks through access hole on inside or outside of frame and down through slots in bottom of truck frame and hitch.
- Attach nuts to forward bolts both sides and torque nuts and metric bolts installed in previous step to specifications below.
- Raise spare tire back into place.

Tighten 1/2"-13 Gr.5 bolts with torque wrench to 75 Lb.-Ft. (102 N*M) Tighten M14 x 2.0 CL10.9 bolts to 115 Lb.-Ft. (156 N*M).

Note: check hitch frequently, making sure all fasteners and ball are properly tightened. If hitch is removed, plug all holes in trunk pan or other body panels to prevent entry of water and exhaust fumes. A hitch or ball which has been damaged should be removed and replaced. Observe safety precautions when working beneath a vehicle and wear eye protection. Do not cut access or attachment holes with a torch.

This product complies with safety specifications and requirements for connecting devices and towing systems of the state of New York, V.E.S.C. Regulation V-5 and SAE J684.

Installation Instructions

GMC Sierra/Chevrolet Silverado 2500 & 3500 HD Pickups.

(All inc. Regular, Crew, Extended & Dually - 2 & 4WD Long & Short bed)

GMC Denali HD Crew-Cab Pickup.

Part Numbers:

75707

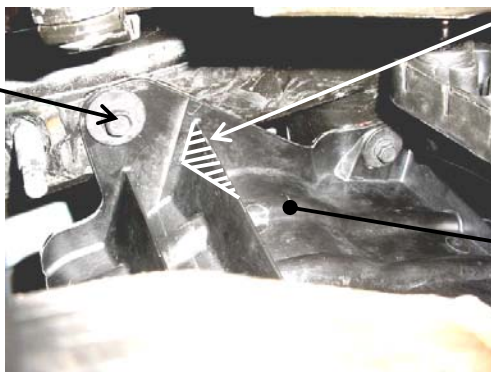
87602

44653

75501

**Looking up underneath passenger side frame rail,
showing plastic spare tire shield**

Remove this bolt short-bed. Leave shield in place between frame and hitch bracket.



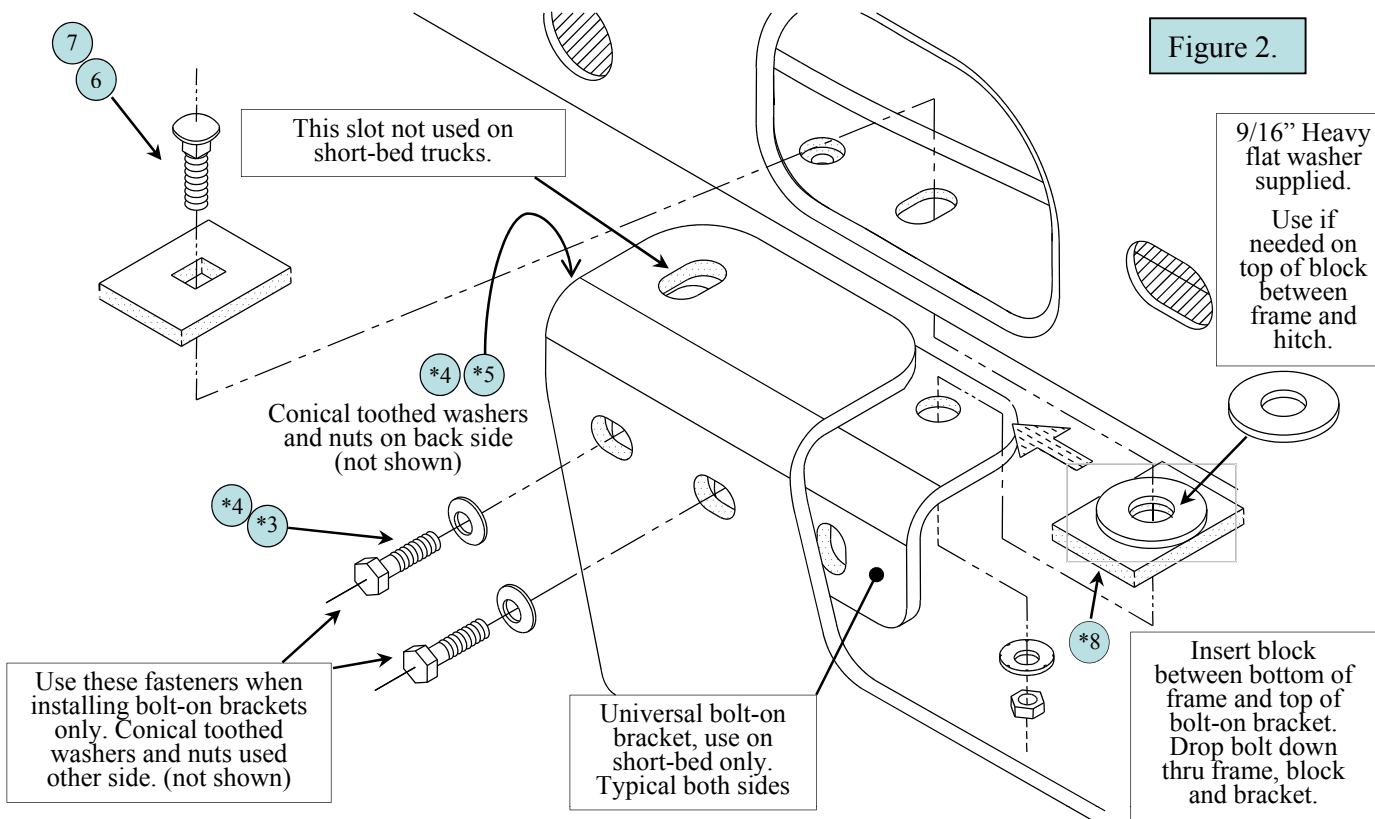
Trim plastic if needed in area shown on short bed trucks

Picture 1.

Plastic spare tire shield

**Magnified view from previous page showing detail
of bolt-on brackets for short-bed trucks ONLY.**

Figure 2.



Tighten 1/2"-13 Gr.5 bolts with torque wrench to 75 Lb.-Ft. (102 N*M) Tighten M14 x 2.0 CL10.9 bolts to 115 Lb.-Ft. (156 N*M).

Note: check hitch frequently, making sure all fasteners and ball are properly tightened. If hitch is removed, plug all holes in trunk pan or other body panels to prevent entry of water and exhaust fumes. A hitch or ball which has been damaged should be removed and replaced. Observe safety precautions when working beneath a vehicle and wear eye protection. Do not cut access or attachment holes with a torch.

This product complies with safety specifications and requirements for connecting devices and towing systems of the state of New York, V.E.S.C. Regulation V-5 and SAE J684.