

INSTALLATION INSTRUCTIONS

EQUIPMENT REQUIRED:

WIRING ACCESS LOCATION: SUV1, SUV2

DRILL BITS: 1/2" on some models

HITCH REQUIRES 5/8" PIN AND CLIP IF STABILIZING PIN IS NOT INSTALLED.

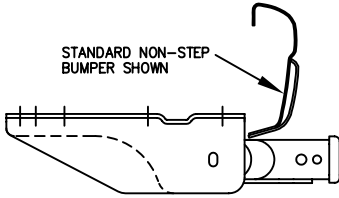
WRENCHES: (TIGHTEN ALL FASTENERS WITH TORQUE WRENCH) 3/4, 7/8

VEHICLE	HITCH NO.
FORD VAN (FULL SIZE)	75703
ALL MODELS INCL. VANS	44652
WITH FACTORY STEP BUMPER	87599

DO NOT EXCEED LOWER OF
TOWING VEHICLE MFR'S RATINGS OR

HITCH TYPE ▼	MAX GROSS TRLR WT(LB)	MAX TONGUE WT(LB)
WEIGHT DISTRIBUTING	10,000	1000
WEIGHT CARRYING BALL MOUNT	6000	600

**NOTE! – FOR 1991 OR OLDER VANS
1991 AND OLDER E-350 & 124" WHEELBASE
VANS REQUIRE ADAPTOR FASTENER KIT
#2626 ORDERED SEPERATELY**



STANDARD NON-STEP
BUMPER SHOWN

HITCH SHOWN IN
PROPER POSITION

1/2-13 X 1-3/4 GR5
CARRIAGE BOLT
1/4 X 1-1/2 X 2
BLOCK (1540)
1/4 X 1-1/2 X 2
BLOCK (1097-002)
CONICAL TOOTHED
WASHER
NUT

HOLE TO BE DRILLED IN VEHICLE
FRAME IF NECESSARY.
TYPICAL EACH SIDE.
BE CAREFUL NOT TO DRILL
INTO THE CARBON CANISTER

EXISTING HOLES IN
VEHICLE FRAME

1/2-13 X 1-3/4 GR5
1/4 X 1 X 2
BLOCK (4419)
1/4 X 1-1/2 X 2
BLOCK (1097-002)
CONICAL TOOTHED
WASHER
NUT

CARBON
CANISTER
IF EQUIPPED

CROSSMEMBER

1/2-13 X 1-3/4 GR5
FLAT WASHER
SPECIAL WASHER (3079)
CONICAL TOOTHED
WASHER
NUT

^SEE NOTE OTHER SIDE
REGARDING SPECIAL
WASHER (3079)

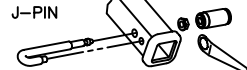
^ON SOME NEWER MODEL
VANS USE SPECIAL
WASHER (3079) ON THIS SLOT.
DO NOT USE BLOCK.

* DEPENDING ON VEHICLE
CONFIGURATION, FORWARD
SLOT MAY LINE UP WITH
EXISTING HOLE IN VEHICLE
FRAME—USE SAME FASTENER
COMBINATION

FIGURE 1

1992 AND NEWER E-150 & E-250 MODELS

OPTIONAL LOCKING STABILIZING PIN



(Order Separately)

1992 AND NEWER MODELS – SEE FIGURES 1 & 2

MODIFICATION OF VEHICLE EXHAUST MAY BE NECESSARY ON VEHICLES WITH TWIN TIP EXHAUST.

NOTE: WIRING HARNESS IS LOCATED INSIDE VEHICLE FRAME. REPOSITION PRIOR TO DRILLING.

1. IF PRESENT, LOWER CARBON CANISTER FROM DRIVER'S SIDE FRAME RAIL.
2. LOWER SPARE TIRE.

NOTE: RELOCATION OF UNDER VEHICLE SPARE TIRE IS NOT REQUIRED. TIRE MAY HAVE TO BE REPOSITIONED SLIGHTLY FORWARD TO AVOID CONTACT WITH HITCH RECEIVER TUBE.

3. REMOVE ALL BUT A THIN LAYER OF UNDERCOATING FROM ATTACHING SURFACES.
4. DISCONNECT FACTORY INSTALLED OPTIONAL DRIVER'S SIDE TRAILER WIRING CONNECTOR FROM BUMPER.
5. POSITION HITCH ON VEHICLE AS SHOWN, LINING UP WITH EXISTING HOLES IN FRAME.
6. LOOSELY INSTALL BOLTS, BLOCKS (DEPENDING ON MODEL: SEE FIGURES 1 & 2), FLAT WASHERS, CONICAL TOOTHED WASHERS AND NUTS.

7. USING HITCH AS A TEMPLATE, DRILL 1/2" HOLE(S) AS NECESSARY IN EACH FRAME RAIL. AND INSTALL 1/2" BOLTS, BLOCKS (DEPENDING ON MODEL), CONICAL TOOTHED WASHERS AND NUTS.

NOTE: SOME VEHICLES HAVE EXISTING HOLES IN FRAME THAT LINE UP WITH A FORWARD HITCH SLOT. READ DIRECTIONS CAREFULLY NOTING DIFFERENT FASTENER COMBINATIONS DEPENDING ON YEAR AND MODEL.

8. REINSTALL FACTORY TRAILER WIRING CONNECTOR TO CLEAR HITCH.
9. RAISE SPARE TIRE, POSITIONING TIRE FORWARD ON VEHICLE TO CLEAR HITCH. CHECK FOR CLEARANCE BETWEEN TIRE AND ANY OTHER VEHICLE PARTS AND BRAKE LINES.
10. REATTACH CARBON CANISTER IF LOWERED. CARBON CANISTER MUST NOT CONTACT BOLT HEAD ON HITCH. IF NECESSARY LOOSEN CANISTER FASTENERS AND REPOSITION TO ENSURE CLEARANCE WITH BOLT HEAD.

TIGHTEN 1/2 FASTENERS TO 75 LB.-FT.

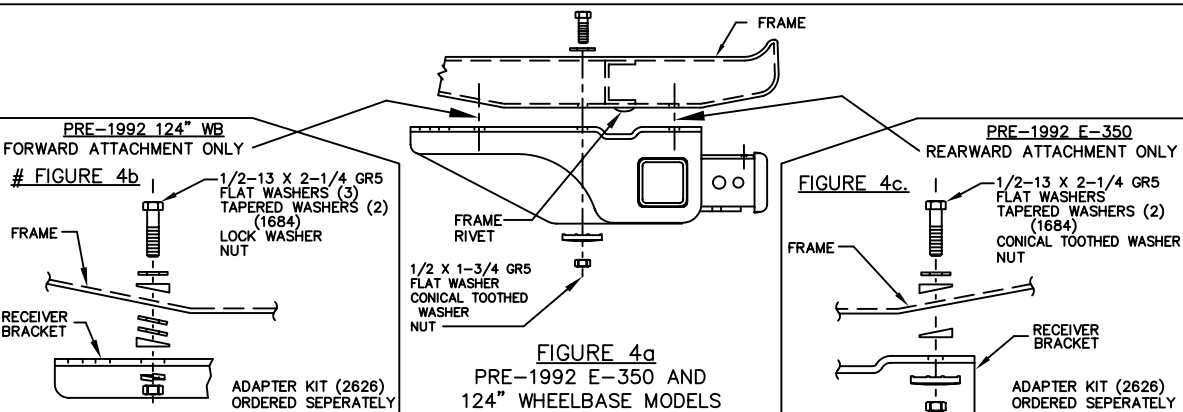
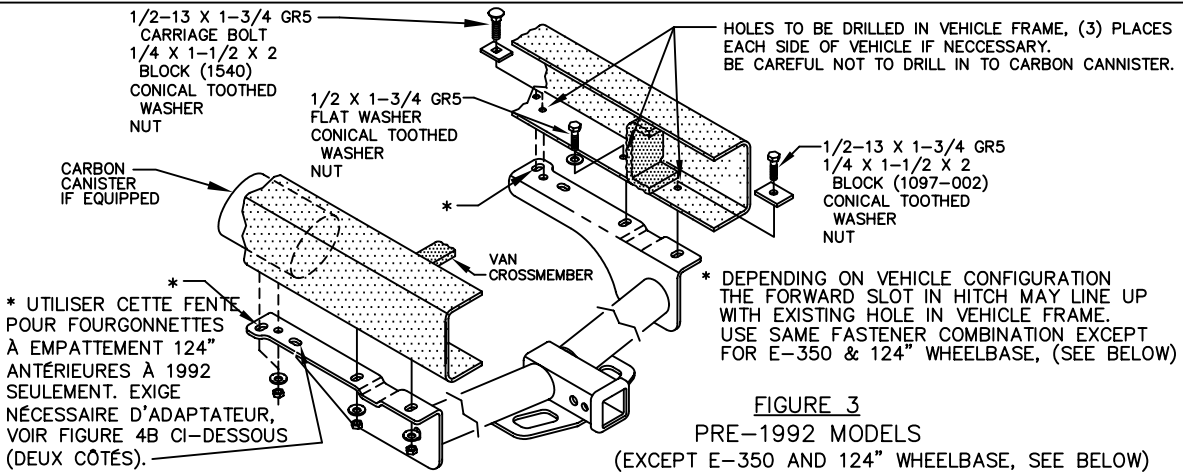
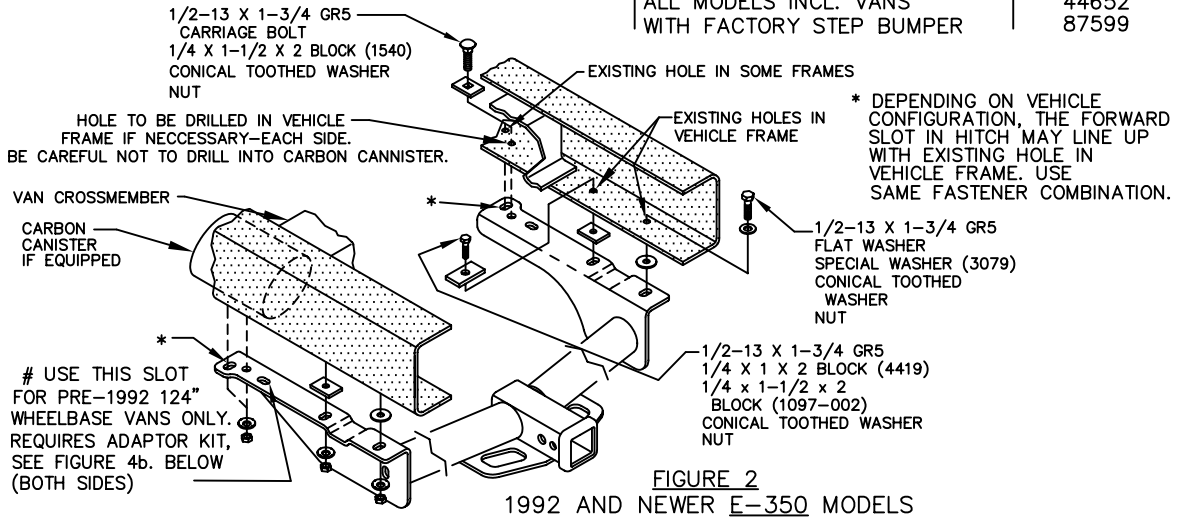
THIS PRODUCT COMPLIES WITH SAFETY SPECIFICATIONS AND REQUIREMENTS FOR CONNECTING DEVICES AND TOWING SYSTEMS OF THE STATE OF NEW YORK AND V.E.S.C. REGULATION V-5.

APPROX WEIGHT (LB.)	FASTENER KIT
33	75703F

NOTE: Check hitch frequently, making sure all fasteners and ball are properly tightened. If hitch is removed, plug all holes in trunk pan or other body panels to prevent entry of water and exhaust fumes. A hitch or ball which has been damaged should be removed and replaced. Observe safety precautions when working beneath a vehicle and wear eye protection. Follow car maker's specs for maximum trailer weight and tongue weight. Do not cut access or attachment holes with a torch.

INSTALLATION INSTRUCTIONS

VEHICLE	HITCH NO.
FORD VAN (FULL SIZE)	75703
ALL MODELS INCL. VANS WITH FACTORY STEP BUMPER	44652 87599



NOTE: ON SOME MODELS, TAIL PIPE AND/OR TAIL PIPE BRACKET MAY HAVE TO BE RELOCATED AND/OR MODIFIED.

PRE 1992 MODELS:

124" WHEELBASE AND E-350 MODELS REQUIRE ADAPTER KIT PART NO. 2626.

- IF PRESENT, LOWER CARBON CANNISTER FROM DRIVER'S SIDE FRAME RAIL.
- REMOVE ALL BUT A THIN LAYER OF UNDERCOATING FROM ATTACHING SURFACES.
- CENTER RECEIVER ON VEHICLE SO CROSSMEMBER FRAME RIVET WILL FIT INTO STEP IN SIDE BRACKET.
- USING HITCH AS A TEMPLATE, DRILL THREE (3) HOLES PER SIDE THROUGH FRAME WITH 1/2" DRILL BIT.
- INSTALL FASTENERS AS SHOWN.
- REATTACH CARBON CANNISTER IF PRESENT - CARBON CANNISTER MUST NOT CONTACT BOLT HEAD, IF IT DOES, LOOSEN CANNISTER FASTENERS AND REPOSITION THE CANNISTER TO ENSURE CLEARANCE WITH BOLT HEAD.

TIGHTEN 1/2 GR5 FASTENERS TO 75 LB.-FT.

THIS PRODUCT COMPLIES WITH SAFETY SPECIFICATIONS AND REQUIREMENTS FOR CONNECTING DEVICES AND TOWING SYSTEMS OF THE STATE OF NEW YORK AND V.E.S.C. REGULATION V-5.

APPROX WEIGHT (LB.)	FASTENER KIT
33	75703F

