

# INSTALLATION INSTRUCTIONS

**EQUIPMENT REQUIRED:**

**WIRING ACCESS LOCATION:** SUV1, SUV2

**DRILL BITS:**

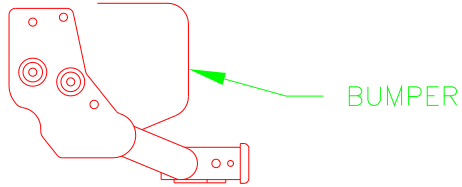
**HITCH REQUIRES 5/8" PIN AND CLIP IF STABILIZING PIN IS NOT INSTALLED.**

**WRENCHES:** (TIGHTEN ALL FASTENERS WITH TORQUE WRENCH) 17mm

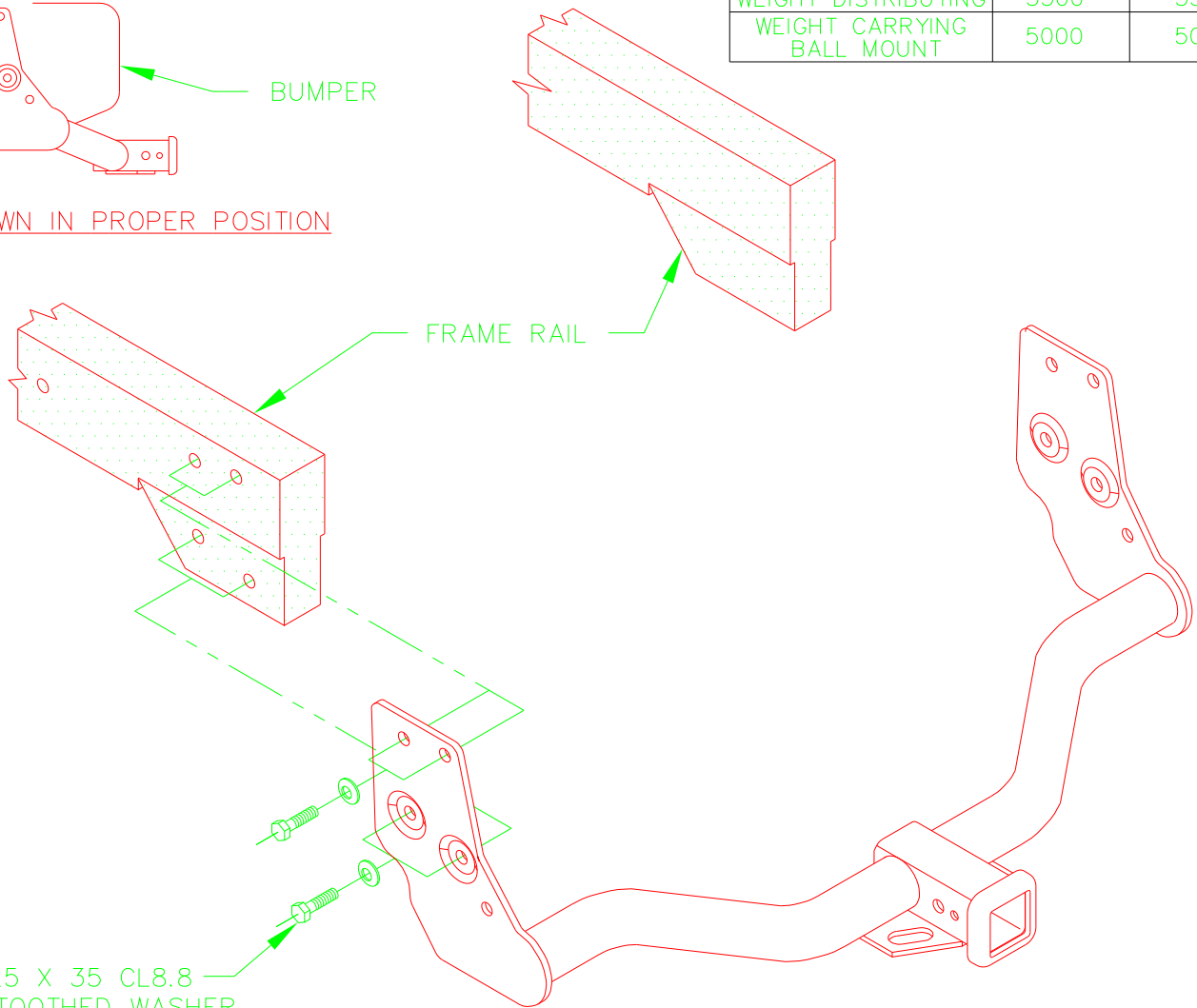
VEHICLE	HITCH NO.
NISSAN PATHFINDER INFINITI QX4	75077 33050 UHI 78141 70609

DO NOT EXCEED LOWER OF  
TOWING VEHICLE MFR'S RATINGS OR

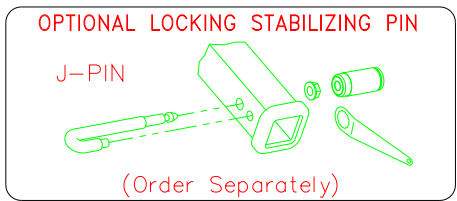
HITCH TYPE ▼	MAX GROSS TRLR WT(LB)	MAX TONGUE WT(LB)
WEIGHT DISTRIBUTING	5500	550
WEIGHT CARRYING BALL MOUNT	5000	500



HITCH SHOWN IN PROPER POSITION



M12 X 1.25 X 35 CL8.8  
CONICAL TOOTHED WASHER  
(8 PLACES)



1. REMOVE TOW HOOKS FROM EACH FRAME RAIL.
2. RAISE HITCH INTO POSITION AND INSERT FASTENERS AS SHOWN ABOVE.
3. RETURN FASTENERS AND TOW HOOKS TO VEHICLE OWNER.

TIGHTEN ALL M12 CL8.8 FASTENERS TO 68 LB-FT.

THIS PRODUCT COMPLIES WITH SAFETY SPECIFICATIONS AND REQUIREMENTS FOR CONNECTING DEVICES AND TOWING SYSTEMS OF THE STATE OF NEW YORK AND V.E.S.C. REGULATION V-5.

APPROX WEIGHT (LB.)	FASTENER KIT
31	01130-957

NOTE: Check hitch frequently, making sure all fasteners and ball are properly tightened. If hitch is removed, plug all holes in trunk pan or other body panels to prevent entry of water and exhaust fumes. A hitch or ball which has been damaged should be removed and replaced. Observe safety precautions when working beneath a vehicle and wear eye protection. Follow car maker's specs for maximum trailer weight and tongue weight. Do not cut access or attachment holes with a torch.

