

# Installation Instructions

**BUICK LaCROSSE, BUICK ALLURE (CANADA ONLY),  
BUICK CENTURY, OLDSMOBILE INTRIGUE**

Part Numbers:

**36374  
06384  
90981**

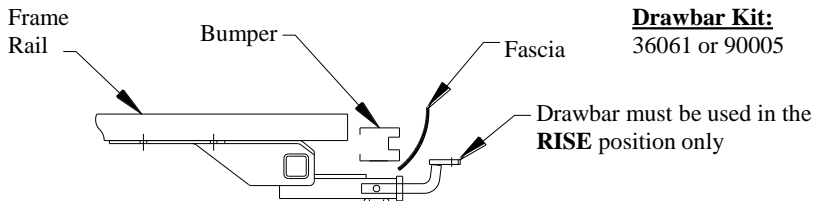
(Sold separately)

**Drawbar Kit:**  
36061 or 90005

**Do Not Exceed Lower of Towing Vehicle  
Manufacturer's Rating or**

**3500 LB Max Gross Trailer Weight  
300 LB Max Tongue Weight**

**Wiring Access Location: PC3, PC4**



## Hitch Shown In Proper Position

### Equipment Required:

**Fastener Kit:** 36374F or 90981F

**Wrenches:** 3/4", 7/8"

**Drill Bits:** 1/2"

Tape 1/2" flat washers to Hitch as necessary to Eliminate gap with frame

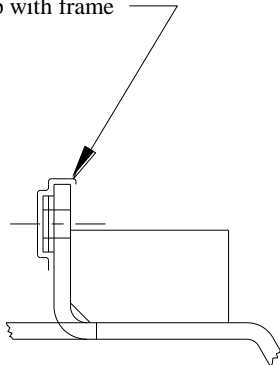


Figure 2

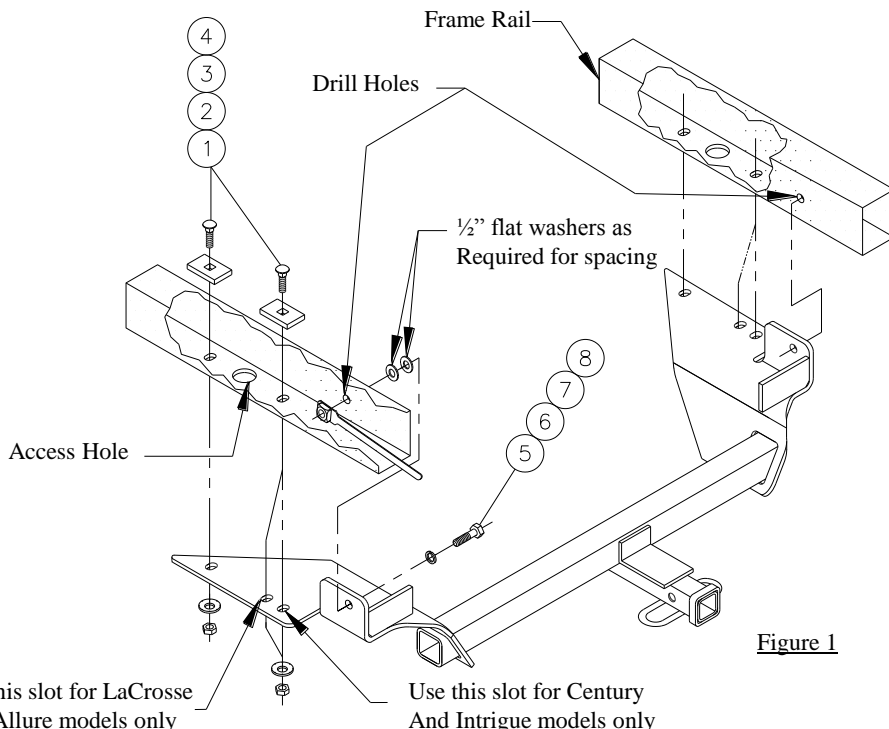


Figure 1

①	Qty. (4)	Carriage Bolt 1/2 x 1 1/4	⑤	Qty. (2)	Hex bolt 1/2 x 1 1/4
②	Qty. (4)	Block 1/4 x 1 1/2 x 2"	⑥	Qty. (2)	Lock washer 1/2"
③	Qty. (4)	Conical Toothed washer 1/2"	⑦	Qty. (4)	Flat washer 1/2"
④	Qty. (4)	Hex nut 1/2"	⑧	Qty. (2)	Handle nut assembly

- Detach (5) rubber exhaust hangers and lower rearward portion of exhaust system.
- Insert carriage bolts and blocks in frame rails thru access hole shown.
- Raise hitch into position and check side-to-side clearance with frame. Tape 1/2" washers to hitch as necessary to eliminate gap (see figure 2).
- Raise hitch into position and attach with carriage bolts as shown in figure 1.
- Using hitch as a template, drill 2 holes in sides of frame rails.
- Insert hex bolt and lock washer thru side frame rail and secure with handle nut inserted thru end of frame rail.
- Reinstall exhaust system. **Tighten all 1/2-13 GR5 fasteners with torque wrench to 75 Lb.-Ft.**

Note: check hitch frequently, making sure all fasteners and ball are properly tightened. If hitch is removed, plug all holes in trunk pan or other body panels to prevent entry of water and exhaust fumes. A hitch or ball which has been damaged should be removed and replaced. Observe safety precautions when working beneath a vehicle and wear eye protection. Do not cut access or attachment holes with a torch.

This product complies with safety specifications and requirements for connecting devices and towing systems of the state of New York, V.E.S.C. Regulation V-5 and SAE J684.