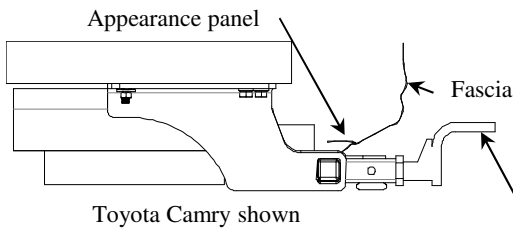


# Installation Instructions

Part Numbers:



**Toyota Camry** page 1

**Toyota Avalon** page 2

**(Sold separately)**

**Drawbar Kit:**

36071

Drawbar must be used in the **RISE** position only.

**36540**

**90031**

**06160**

**Do Not Exceed Lower of Towing Vehicle  
Manufacturer's Rating or**

**3500 LB (1589 Kg) Max Gross Trailer Weight**

**300 LB (136 Kg) Max Tongue Weight**

## Hitch Shown In Proper Position

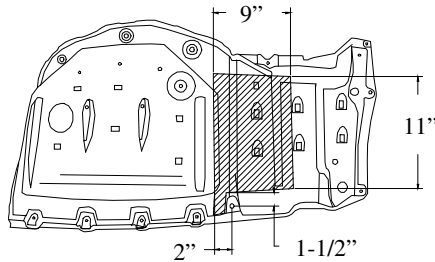
**Equipment Required:** Utility Knife,  
Lubricant or soapy water

**Fastener Kit:** 36540F

**Wrenches:** 10mm, 12mm, 14mm, 17mm, 11/16"

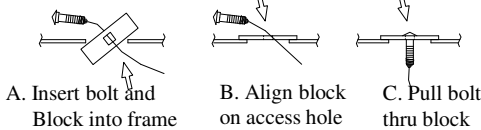
**Drill Bits:** 1/2", 1"

## Toyota Camry install

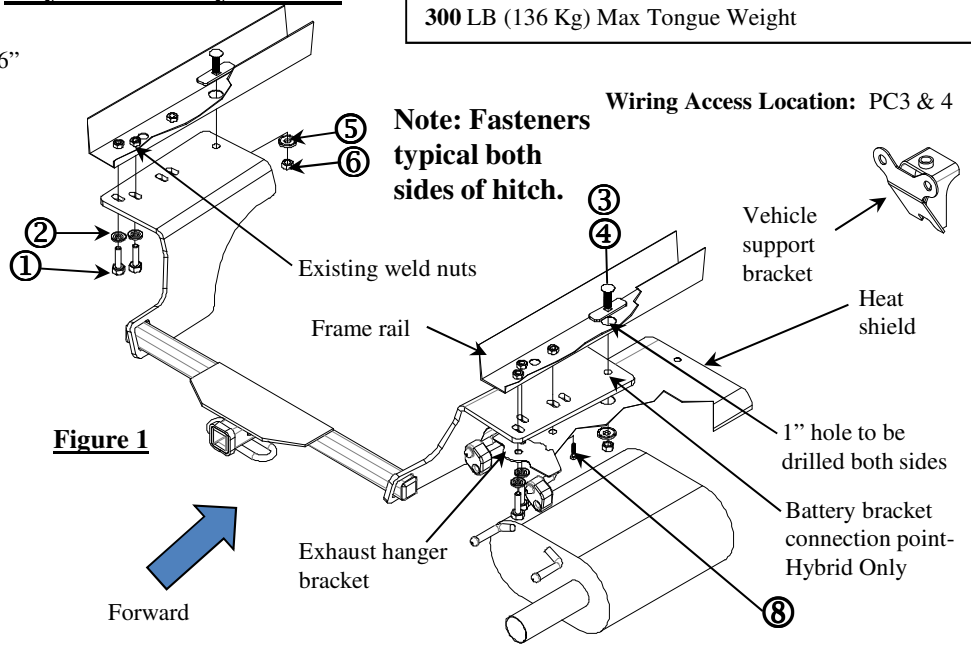


**Figure 3**

Appearance panel trim



**Figure 2**



**Figure 1**

**Note: Fasteners  
typical both  
sides of hitch.**

①	Qty. (4)	Hex Bolt M10 X 1.25 X 40 CL8.8	⑤	Qty. (2)	Conical Washer 7/16"
②	Qty. (5)	Conical Washer 3/8"	⑥	Qty. (2)	Hex Nut 7/16-14
③	Qty. (2)	Carriage Bolt 7/16-14 X 1.5 GR5	⑦	Qty. (1)	Hex Bolt, M8-1.25 x 50 CL10.9
④	Qty. (2)	.915 X 3.000 X 10GA Spacer	⑧	Qty. (2)	Hex Bolt M6 X 1.0 X 40

**Note:** There are different appearance panels, due to different models. Some vehicles will require no trimming of appearance panel.

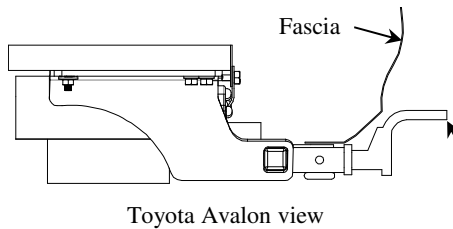
**Note:** on newer models remove vehicle support bracket if present and return to owner.

- Remove appearance panel if the panel covers the drivers side frame rails. Trim or remove panel as shown, obtain Vehicle Owner's approval before trimming. Note: if panel is not reinstalled there will be a 3/4"-1" gap between hitch and fascia. See Figure 3.
- Lower exhaust by removing two bolts at exhaust hanger bracket, and remove rubber isolator on the forward side of the exhaust. Spraying a lubricant or soapy water on the metal hanger rod and the rubber isolator helps removal. Remove the rubber isolator from the muffler leaving them attached to the exhaust hanger bracket. On vehicles with dual exhaust repeat process on both sides.
- Remove heat shield.
- Raise hitch into position over exhaust pipes and install M10 hex bolts. Exhaust hanger bracket not necessary at this step. **(If installing on the Hybrid model, there is a battery bracket on the passenger side of the vehicle and instead of drilling a hole in the frame simply remove the rearmost bolt from the bracket attached to the frame and attach hitch using the supplied M8 x 40mm hex bolt. Drilling is still required on the driver's side of the vehicle.)**
- Using the hitch as a template mark and center punch the (2) holes on both sides. Drill 1/2" pilot hole both sides.
- Lower hitch and drill 1" hole in frame rail. Mark and drill heat shield for the 7/16 Carriage bolt using the frame rail as template.
- Reinstall appearance panel.
- Insert carriage bolt and spacer as shown leaving pull wire attached. See Figure 2.
- Raise hitch into position threading the pullwire through the bracket. Install M10 bolts as shown on driver's side. Remove pullwire and install conical washers and nuts on passenger side. Install the exhaust hanger bracket on the passenger side, then remove pullwire and install conical washers and nuts on driver's side. See Figure 1.
- Tighten all fasteners to the required torque specification.
- Reinstall the heat shield/s using M6 bolt as needed.
- Raise exhaust back into position.

Tighten all 7/16 GR5 fasteners with torque wrench to 50 Lb.-Ft. (68 N\*M)  
Tighten all M8 CL10.9 fasteners with torque wrench to 27 Lb.-Ft. (37 N\*M)  
Tighten all M10 CL8.8 fasteners with torque wrench to 38 Lb.-Ft. (52 N\*M)

**Note:** check hitch frequently, making sure all fasteners and ball are properly tightened. If hitch is removed, plug all holes in trunk pan or other body panels to prevent entry of water and exhaust fumes. A hitch or ball which has been damaged should be removed and replaced. Observe safety precautions when working beneath a vehicle and wear eye protection. Do not cut access or attachment holes with a torch.

This product complies with safety specifications and requirements for connecting devices and towing systems of the state of New York, V.E.S.C. Regulation V-5 and SAE J684.



# Installation Instructions

Part Numbers:

**Toyota Camry** page 1

**36540**

**Toyota Avalon** page 2

**90031**

**06160**

**(Sold separately)**

**Drawbar Kit:**

36071

**Do Not Exceed Lower of Towing Vehicle  
Manufacturer's Rating or**

**3500 LB (1589 Kg) Max Gross Trailer Weight**

**300 LB (136 Kg) Max Tongue Weight**

## Hitch Shown In Proper Position

**Equipment Required:** Strap or bungee cords to support exhaust

**Fastener Kit:** 36514F

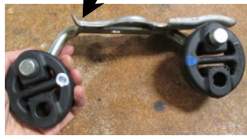
**Wrenches:** 10mm, 12mm, 14mm, 17mm, 6" socket extension, 11/16"

**Drill Bits:** 1/4", 1", 1/2"

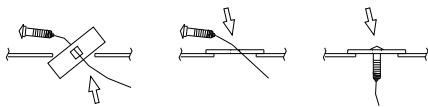
Drawbar must be used in the **RISE** position only.

## Toyota Avalon install

**Bend tab on exhaust hanger to allow bracket to lay flat on hitch bracket**

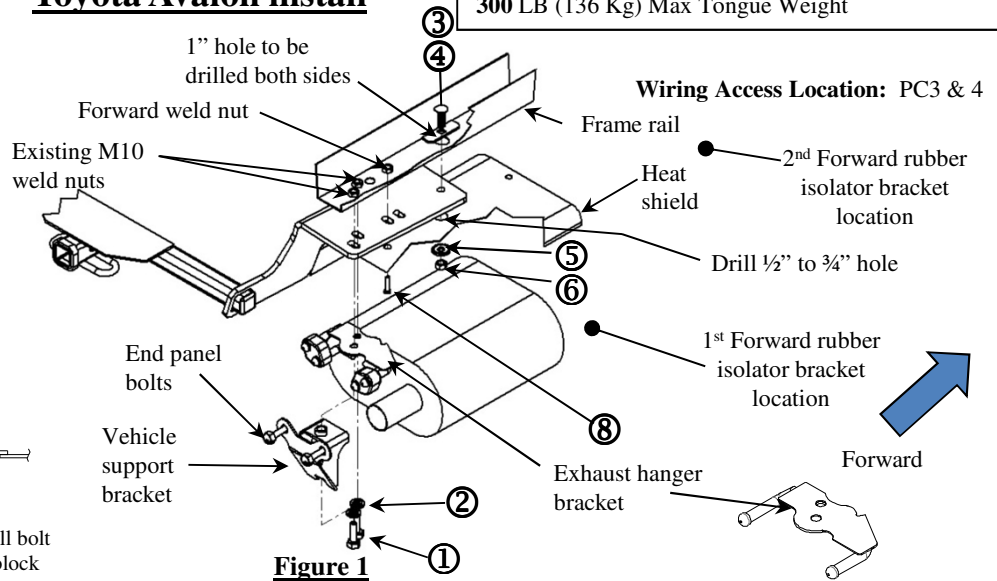


**Figure 3**



A. Insert bolt and Block into frame      B. Align block on access hole      C. Pull bolt thru block

**Figure 2**



**Figure 1**

**Note: Fasteners typical both sides of hitch.**

①	Qty. (4)	Hex Bolt M10 X 1.25 X 40 CL8.8	⑤	Qty. (2)	Conical Washer 7/16"
②	Qty. (5)	Conical Washer 3/8"	⑥	Qty. (2)	Hex Nut 7/16-14
③	Qty. (2)	Carriage Bolt 7/16-14 X 1.5 GR5	⑦	Qty. (1)	Hex Bolt, M8-1.25 x 50 CL10.9
④	Qty. (2)	.915 X 3.000 X 10GA Spacer	⑧	Qty. (2)	Hex Bolt M6 X 1.0 X 40

**Note:** on newer models remove vehicle support bracket if present and return to owner.

- Remove appearance panel and return panel to owner.
- Lower exhaust by removing two bolts at the end panel and two bolts on the frame rail exhaust hanger bracket each side. **Return to owner.**
- Support the exhaust to prevent damage using straps, bungee cords or other means. Remove 1<sup>st</sup> rubber isolator bracket on the forward passenger side of the exhaust and the next 2<sup>nd</sup> forward rubber isolator bracket.
- Remove heat shields.
- Raise (slide) hitch into position over exhaust pipes and temporarily install M10 hex bolts for support. Exhaust hanger bracket not necessary at this step. **(If installing on the Hybrid model, there is a battery bracket on the passenger side of the vehicle and instead of drilling a hole in the frame simply remove the rearmost bolt from the bracket attached to the frame and attach hitch using the supplied M8 x 40mm hex bolt. Drilling is still required on the driver's side of the vehicle. Refer to figure on Camry page.)**
- Using the hitch as a template mark and center punch the (1) holes on both sides. Drill 1/4" pilot hole both sides.
- Lower hitch and drill 1" hole in frame rail. Mark and drill heat shield for the 7/16 carriage bolt using the frame rail as template. Set aside for later install.
- Insert carriage bolt and spacer into the frame as shown leaving pull wire attached. See Figure 2.
- Raise hitch into position threading the pullwire through the bracket. Install at least one M10 bolts as shown both sides.
- Remove pullwire and install conical washers and nuts on both side. Center hitch and **Torque 7/16" fasteners to required specification.** Install heat shield.
- Install the 1<sup>st</sup> & 2<sup>nd</sup> forward rubber isolator brackets.
- Remove M10 bolts and install the exhaust hanger brackets thru the forward weld nut both sides (item 1). **Bend tab on exhaust hanger to allow bracket to lay flat on hitch bracket**  
Tighten all 7/16 GR5 fasteners with torque wrench to 50 Lb.-Ft. (68 N\*M)  
Tighten all M8 CL10.9 fasteners with torque wrench to 27 Lb.-Ft. (37 N\*M)  
Tighten all M10 CL8.8 fasteners with torque wrench to 38 Lb.-Ft. (52 N\*M)
- Install vehicle support bracket re-using the existing end panel bolts and (item 1) remaining M10 bolts.

Note: check hitch frequently, making sure all fasteners and ball are properly tightened. If hitch is removed, plug all holes in trunk pan or other body panels to prevent entry of water and exhaust fumes. A hitch or ball which has been damaged should be removed and replaced. Observe safety precautions when working beneath a vehicle and wear eye protection. Do not cut access or attachment holes with a torch.

This product complies with safety specifications and requirements for connecting devices and towing systems of the state of New York, V.E.S.C. Regulation V-5 and SAE J684.