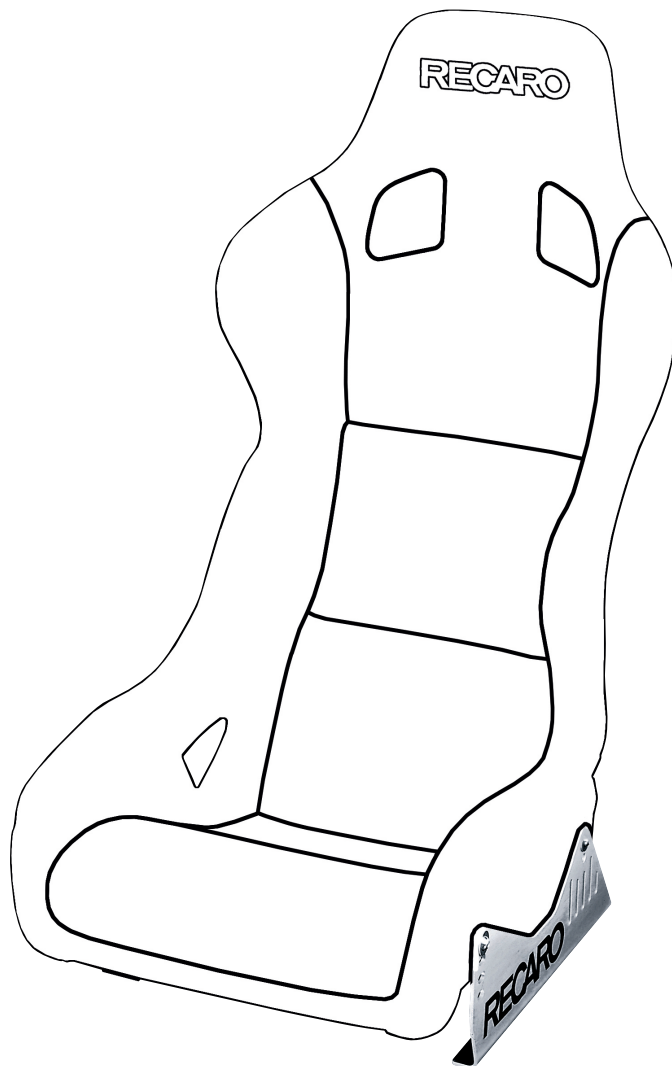
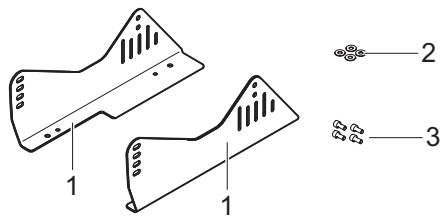


RECARO ADAPTER ALUMINIUM 7207000A RECARO POLE POSITION 2003/2003 CARBON RECARO FURIOUS/POLE POSITION N.G. RECARO PROFI SPG XL RECARO PRO RACER SPA XL HANS

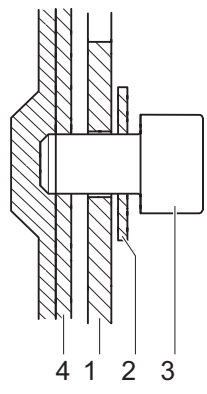
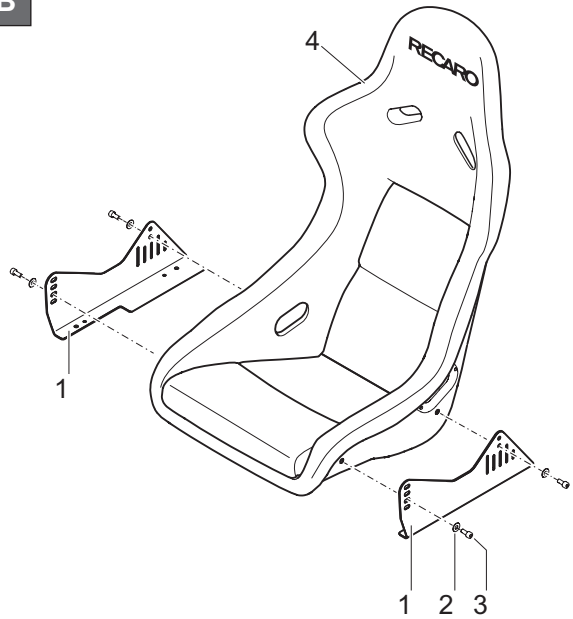
Installation Instructions



A



B




1. General information


1.1. Introduction


By choosing the RECARO racing shell, you've opted for a high-quality seat that provides both safety and comfort.

1.2. Symbols and key words


The following symbols and key words are used in these instructions:

 DANGER
A direct danger that will result in serious injury or death.

 WARNING
A possibly dangerous situation that can result in serious injury or death.

 CAUTION
A possibly dangerous situation that can result in minor injury or material damage.

NOTICE
It is essential to obey notices! If they are not obeyed, there a danger of:
<ul style="list-style-type: none">• Damage to the product or product surroundings• Limitation of the product's functionality• Limitation or loss of the product's safety

 Additional notice for better understanding
--

2. General safety instructions

2.1. Exclusion of liability

If you do not use your RECARO racing shell as described in these instructions or if you modify the RECARO racing shell or the fittings, RECARO shall accept no liability insofar as is permitted by law.

Any modification to or misuse of the RECARO racing shell shall also invalidate the warranty.

2.2. Correct installation

An incorrectly installed racing shell can pose a significant risk to health, life and safety in the event of a collision or accident.

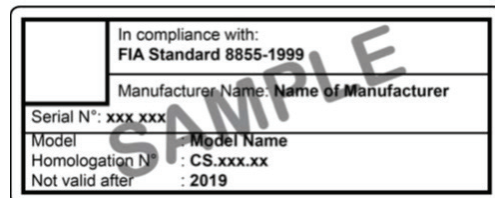
- Follow these installation instructions, especially the safety instructions.
- Keep these installation instructions for the entire duration of the racing shell's service life.
- Keep these installation instructions accessible to specialist staff at all times.

2.3. Correct use

- The RECARO adapters 7207000A have been independently tested for motor sports and may be used in motor sports together with the racing shells RECARO Furious/Pole Position N.G., RECARO Profi SPG XL and RECARO Pro Racer SPA XL HANS.
- There is no general permit for the RECARO Furious/Pole Position N.G., RECARO Profi SPG XL and RECARO Pro Racer SPA XL HANS racing shells (general permit required for driving on public roads in Germany). These racing shells are not approved for use on public roads under the German road traffic licensing regulations (StVZO), the basis for regulating road traffic law in Germany. The mentioned racing shells are designed exclusively for use in motor sports.
- There is a general permit for the racing shells RECARO Pole Position 2003 and RECARO Pole Position 2003 Carbon. These racing shells are approved for use on public roads in accordance with the German road traffic ordinance StVZO.

RECARO racing shells	StVZO approval
RECARO Pole Position 2003	✓
RECARO Pole Position 2003 Carbon	✓
RECARO Furious N.G.	–
RECARO Pole Position N.G.	–
RECARO Profi SPG XL	–
RECARO Pro Racer SPA XL HANS	–

- The racing shells must not be used after the date shown on the approval sticker (Not valid after: xxxx). After this date, the racing shells may not be used under any circumstances in a vehicle any further.



- RECARO racing shells that have been subjected to the stresses of an accident (racing accident or collision) must no longer be used.

2.4. Staff qualification

Only authorised, trained specialists may install and remove racing shells. This also applies to the prior removal of standard seats that are fitted with a side airbag in the seat and/or pyrotechnic belt tensioners.

2.5. Installation instructions

Securing of the racing shell and adapter in the vehicle and the related structural modifications to the vehicle must be done in accordance with the specifications of the respective national motor sport association (in Germany: **DMSB** – German Motor Sports Association) or the **FIA** (Fédération Internationale de l'automobile) as per the respective applicable version of the regulations that apply (DMSB – Motor Sports Manual: see General provisions and explanations to the safety instructions (FIA and DMSB groups) 3.3 / FIA - International Sporting Code: see Appendix J - Art. 253, Art. 16).

2.6. Structural alterations

Structural alterations and the use of unapproved components can jeopardise safety and functional capability.

- When installing the RECARO racing shell, use only original components from RECARO.
- Do not modify either the adapter or the racing shell, or its homologation will be rendered void.
- Do not fit any additional parts (such as beverage holders, fire extinguishers etc.) to the racing shell.

2.7. Residual risks

The supplied micro-encapsulated screws can break or come loose if they are re-used several times. In some circumstances, this can cause the racing shell to become detached from its anchoring in the event of an accident, and thus present a danger to life and safety.

- Use only the supplied micro-encapsulated screws when installing the racing shell.
- Use the supplied micro-encapsulated screws only once.
- Tighten all screws with the specified torque.

3. Installation

NOTICE

The interplay between racing shell and adapter is crucial to how the entire seat system behaves.

- Mount the adapter 720700A only together with one of the following RECARO racing shells:
 - RECARO Pole Position 2003
 - RECARO Pole Position 2003 Carbon
 - RECARO Furious N.G.
 - RECARO Pole Position N.G.
 - RECARO Profi SPG XL
 - RECARO Pro Racer SPA XL HANS

3.1. Positioning the racing shell in the vehicle

- Select the most comfortable seat position for yourself that is safest for driving the vehicle:
You must be able to completely hold the top edge of the steering wheel without lifting yourself out of the seat with your back.
Your knee must still be slightly angled when the clutch or brake pedal is fully pressed.
- Make sure that the restraint systems and the roll cage are correctly installed (see the manufacturer's installation instructions).

3.2. Scope of delivery (Figure A)

- Check the scope of delivery for completeness before installation.

Aluminium adapter 720700A

- (1) Adapter, 2 ea.
- (2) Washer, 4 ea.
- (3) Screw M8x20, 10.9, 4 ea.

3.3. Installation sequence

 Refer to Page 3 for the associated drawings.

Aligning the adapters

NOTICE

On each of the insides of the two adapters there is a black arrow on a white background

- Mount the adapter in the vehicle so that the arrows point in the driving direction.



The arrow must point in the driving direction.

Mounting adapters in the vehicle (Figure B)

NOTICE

The adapters must be secured in the vehicle and the associated structural modifications to the vehicle must be done in accordance with the stipulations of the respective national motor sports association or the FIA and as per the applicable version of the regulations that apply.

- Mount the adapters in the vehicle with four M8 screws, strength class 10.9.
Tightening torque: 35 Nm.

Fixing the racing shell

1. Position the racing shell (4) between the adapters (1).
2. Set the seat height by selecting the rear holes (a, b).
3. Fix the racing shell at the rear on the adapters (1) with washers (2) and M8x20 screws (3). When doing this, only tighten the screws hand-tight.

Aligning the racing shell

1. Set the seat incline by selecting the front holes (c, d, e, f).
2. Fix the racing shell (4) at the front on the adapters (1) with washers (2) and M8x20 screws (3).

Final installation

- Tighten all 4 mounting screws (5) with a tightening torque of 22 Nm +2/-3 Nm.



DANGER

Danger of serious injury if the racing shell becomes detached from its anchoring.

- Use only the supplied micro-encapsulated screws when installing the racing shell.
- Use the supplied micro-encapsulated screws only once.
- Tighten all screws with the specified torque.